

FRIENDS OF WARRANDYTE STATE PARK NEWSLETTER

MARCH 1992

Editorial

We seem at present to be 'having the summer we had to have' and missed last month. And of course the recession with it we did have and is still with us despite all the wise economic predictions last year.

I think that we can take some heart in the fact that FOWSP is definitely not in recession, and looks like having another successful year. There has been a steady influx of new members in recent months. It is good to see their enthusiasm to take an active role in the various activities of the group. It is interesting to note how quickly they obtain a great deal of knowledge and expertise in the problems of conservation, and how they can apply them to their everyday life. Accordingly they can bring a greater understanding to members of their family. Another advantage is to be critical of some of the strange statements heard on radio and T.V. about environmental issues. Only recently an overseas delegate to a seminar in Melbourne maintained that no modern pesticides were harmful to growing crops, birds, or animals. We should always beware of 'talking heads' and check such statements for ourselves.

Recently conservation has taken a back seat to politics- a common occurrence. If we are concerned about conservation we should take the chance to discuss environmental matters with the people we vote for. This will be a useful task if we have studied the problems beforehand.

"Life is a race between education and catastrophe. It is hoped that education will win before catastrophe occurs."

H.G. Wells

"There is just one hope of repulsing the tyrannical ambition of civilisation to conquer every niche of the whole world. That hope is the organisation of spirited people who will fight for freedom of the wilderness."

Robert Marshall

"When most people are asked what they wished most for in their lives it was a good future for their children - but they have a mental block when it comes to seeing that what we are doing now to the world is the very thing that endangers those wishes."

Paul Erhlich

"Wildlife" - Warrandyte Festival

Dianella longifolia

We need many helpers at the Warrandyte Festival.....NO EXPERIENCE is necessary (however if you are a "regular" that would be marvellous!) We are after people who would like to try face painting and "wildflower finger decoration". Helpers for the Damper on Sticks and to pot up an indigenous seedling, manning the tent, information stall, taking Wildlife reports are all so necessary for success. Gail also needs helpers for the float and more CHILDREN IN WILDLIFE COSTUMES for going ON the float..Costumes do not need to be elaborate and Gail and Shirley can help with simple ideas and some bits and pieces for costumes. So.....

ENQUIRIES.....MARG B. 844 1060 GAIL R. 722 1926 SHIRLEY M. 844 1895.

or any Committee members...see back page.

Butterfly Droppings

WARRANDYTE FOLLIES.....This year titled....."WEST END STORY!".....Will the mind boggle?

Remember to bring a bottle and a plate to share. Do remember to B. Y. O. glass as well! Butterfly URGENTLY requires you to plan your TABLE (a 10 and a 12 are still available)

NOW.....Phone Shirley Mandemaker on 844 1895 for your BOOKING for THURSDAY MARCH 26th. If you book now you may pay at the door.....\$12.00 per person. Tables are filling fast AND pressure is mounting for "outsider" bookings

DO NOT DELAY!

Butterfly 844 1895 (remember)

NOT HOUSE GOSSIP

Newsletter circulation has gone up over the Summer period....we had to print 20 extra copies! We have about 20 more families who have joined. Those people who are behind in renewing membership may find the membership computer much more likely to give the tardy the CHOP. This may seem like nagging but our \$10 membership has to go a LONG WAY.

The S.E.C. are now chopping their way through Wonga Park. They are promising to review what is actually happening...GOOD NEWS...BUT, any problems Wonga Park folk can phone Flora Anderson 7221776. Flora, Joy, Neal and Don "know it all".

The Nursery is really brimming at the present. Pat has been doing a stock taking prior to the Autumn planting. We have about 7000 plants of a 100 different species ready to go in very soon. We also have two large "Nappy" buckets full of seed for direct seeding on Fourth Hill. We are still collecting seed from various areas..an unusual and very plentiful season.

Joy Hildebrand, Betty Mifsud and Elizabeth Sevier all attended a workshop at Westerfolds "Getting the most from your Tree-planting"- Melbourne Water organised it with the "SUREGROW" Company. Our reps will impart their knowledge to the group by way of Newsletter and mini work session. Many thanks to Pat Fricker.

Another group of members will attend the V.N.P.A. Friends Network One Day Seminar this month as well. Lots to learn...lots of old Friends to catch up with.

Well our book is now at the stage of needing a different type of Friend....people who could help with its publication. Any people with ideas please contact Pat and Mike Coupar 844 1650 or discuss it with a Committee member. ENTREPRENEURS PLEASE!

Getting back to the S.E.C. Bare Earth Brigade. Myles and Huon Seymour deserve a gold star each for wisdom and persistence. As the pathetic stumps of a stand of once beautiful Red-Box were receiving a nice coat of something deadly (not mentioned in the Code of Practice!) the boys set to with hoses and buckets of water. (We will report on any recovery.) The workmen were frustrated and left. Red Box are a quite slow growing tree, rarely drop branches and are not able to "takeover" in 3 years. Nonnie and Doug must be very pleased with the reaction of the boys (who were in charge of the homestead that fateful afternoon).

Plans for Arbour Week are in the pipeline at present. We need lots of volunteers to help with the local schools who will be once again working to transform the Orchard at Pound Bend.

If you are available for the weekdays May 11-17th. Phone Margaret Burke 844 1060.

We would like to report the result of the latest Bat monitoring....on Fourth Hill on one night this month 42 bats of 4 different species. Same evening, as well as the usual Ringtails and a "Brushy" a SUGAR GLIDER was spotted. We are hoping these tiny fauna may return. Please remember to report any sightings of Wildlife in the Park or on your properties. Phone Park Office 844 2659 or any Committee members.

Well OUR WISH IS THE DEPARTMENT'S COMMAND. Last Newsletter we expressed a hope for the appointment of a PARK CARE officer. Within days we had Fay Valcanis arrive. Fay has already become well known to the Committee and the Thursday Group. She will be inspiring all kinds of effort and will be behind lots more little "sub-groups". Watch for her regular column in the newsletter and for the odd P. S. here and there.

Virginia has had an increasing response to the LAND FOR WILDLIFE programme. If you would like an application for this status for your land see the Park Office, Marg Burke or the F.O.W.S.P. Stall at the Warrandyte Market.

Butterfly
Dropping

An exciting visit to KINGLAKE NATIONAL PARK on April 12th (Sunday) is not to be missed. The Community Bus will leave Pound Bend Depot at 8.30am with Coach Captain Ron Golding in charge. Picnic lunch needs to be packed, back-packs and good walking shoes will be the order of the day. take private vehicles. If you will have spare seats please advise Shirley as the bus is half booked already. Phone Shirley on 844 1895.

After the success of the trip to French Island last year we were glad of the invitation to visit Kinglake National Park. It should be a great day....for the past two years (each icy-cold July) Gay Harris, Glen Henke and Shirley Mandemaker have been Fowspanian representatives taking part in the exciting Lyrebird Surveys conducted by the Kinglake Friends, Friends of the Lyrebird and the Kinglake Rangers (BRRRRR!) We will meet them all, check out and perhaps even lend a hand in a track project they have on currently. AND you may all be inspired to sign on for this July(?)

MUSIC IN THE FOYER.....Get out your calendar right now and set aside Sunday May 3rd. from 6-8pm. for a musical soiree in the foyer of the new Community Centre. We are sponsors for your Friends and ours the Hildebrands and Fiddle player Greg O'Leary to put together a musical treat- Folk, Country and Blues for the delectation of all the family. More in April's Newsletter! Bring along a picnic tea, friends, family and a supper to share. \$5.00 entrance (\$12 family ticket) Tea and Coffee provided. Proceeds will go towards publication of "Discovering Warrandyte".

Dandenong's got one, The Pines just received one, now Warrandyte's been allocated one, and we're hoping it will spread. PareCare is a program which aims to provide local residents and the wider community with information on the problems which arise in the park, these being primarily weed infestation and the problems associated with domestic pets. The park is currently attempting to address these problems on the parks side of the fence so to speak. Hopefully if we can generate enthusiasm and support from the adjacent residents to do the same in their backyards we will be moving closer to maintaining two of the significant threats the park faces.

ParkCare is an education and participation program which hopes to encourage the local community to take action on park issues on a local scale. By no means does it wish to encroach on the valuable work being done by the friends group but will hopefully be able to provide support where needed. Look out for the ParkCare display at the Warrandyte festival, and drop in for a chat. For the time being if you would like more information on what's happening or would like to become involved you can contact me at the park depot. Bye for now,

Fay

Fay Valcanis
ParkCare Officer,
Warrandyte State Park.
844 2659



FRIENDS OF THE WANDERING BROGIL

Inspired by Mark Gardner and his work on Stoney Creek the "FRIENDS OF THE WANDERING BROGIL" wish to announce their birth.

Brogil Creek (probably not its real name) is a tiny tributary that runs into Stoney Creek at the Research Rd. bridge. The area surrounding it is small but provides an important bird and small mammal refuge. (It would be even better if the Black ducks would lead their little children UNDER the road instead of ACROSS it!)

Our hope is to plant lots of prickly protection for all the wild life, particularly for the Blue Wrens losing their homes as we spray the blackberries.

IVY AND WEED PULLING WILL BEGIN SATURDAY MORNINGS at 9.00am.

Contact Joy Hildebrand 844 2638 or Debbie Howse 844 2158

for the details.

ALL HELP WILL BE GREATLY APPRECIATED. PLANTING DAY TO BE
ANNOUNCED SOON.

Gad's Gang

GAD'S GANG....Sunday April 12th 9.30 for those who do not go to Kinglake. May 10th will be the date for those travellers who wish to make up for their "GADDING"! Mark will be giving demonstrations of his special "underlay" technique. This has been a very successful group who could always use a little extra talent.....Enquiries Mark Gardner 8443799.

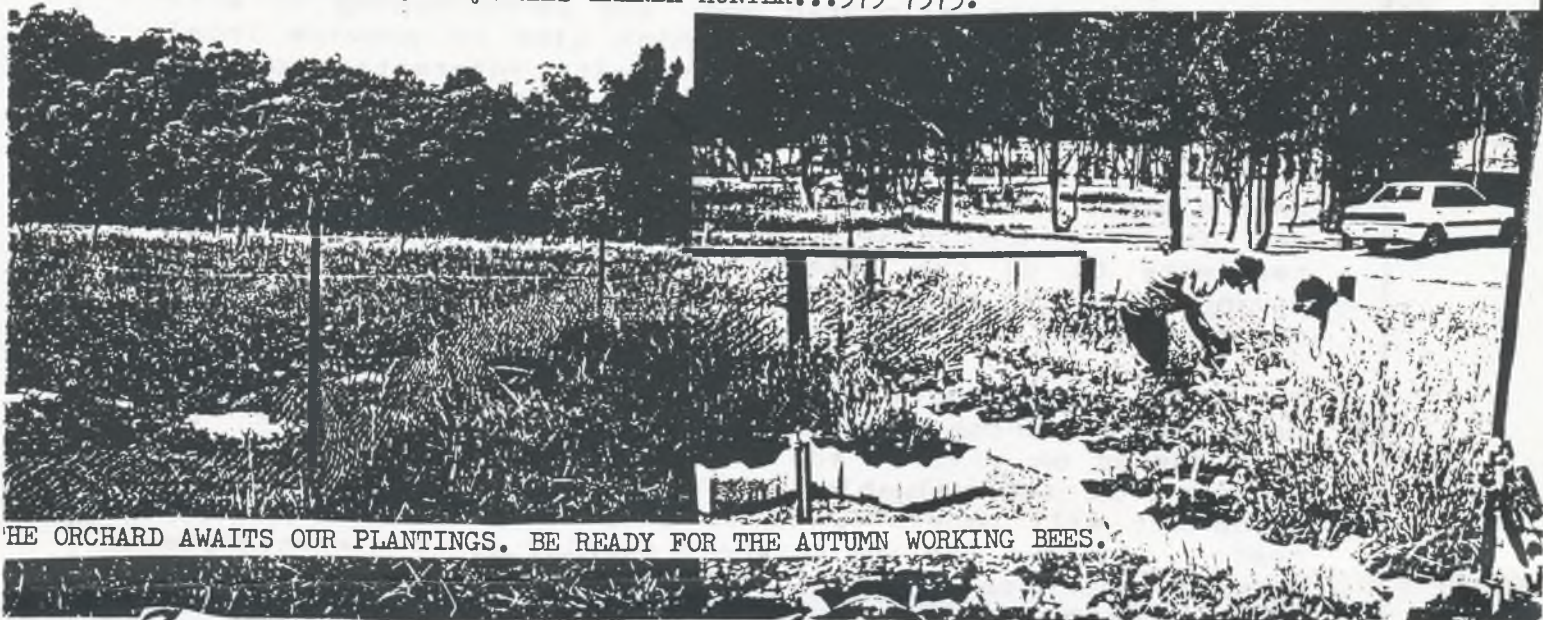


GARDEN HELPERS ?

We recently received a letter from the Friends of the State Park congratulating W.M.I. & A.A. on the refurbishing of the Hall and offering some plants and help with the garden. The recent landscaping by the Doncaster and Templestowe Council now enables us to accept this kind offer. However, as the council didn't see fit to complete its obligation to make good the havoc caused by the widening of the road and the demolishing of the bank between the Hall and the Studio, before we do anything it will be necessary to improve this area of the garden. I have spoken to Bev Hanson who has agreed to advise on how best to do this. The Tuesday Potters who did such an excellent job helping with the extensive planting across the road, have agreed to help again. So now we need a cool, fine Tuesday afternoon.

Marjorie Beecham

STOP PRESS.....BRENDA HUNTER has arranged for an OVERNIGHT stay with Friends of French Island at the FRENCH ISLAND GAOL. \$30 Adults \$5 Children. APRIL 4-5th Meet at Stoney Pt. Hydrofoil at 8.45am. Take food/sleeping-bags. Meals Sat. lunch, tea(BBQ) Sun. breaky & lunch. Farm and Pool available for slackards. ENQUIRIES BRENDA HUNTER...379 7375.



Fascinating Facts from Flora

Komes, Klemas, & Bearded Women

1. Clematis aristata Old Man's Beard

You will hear John Patrick pronouncing Clematis as CLEM-a-tiss and pittosporum as PITTOS-porum, but don't be intimidated by our migrants from the UK. The Australian way is almost invariably clem-AY-tiss.

The name derives from the Greek, klematis - a branch or twig, diminutive of klema, a vine-branch, referring to their climbing like a vine.

Male and female flowers are borne on separate plants. I sometimes wonder if the common name should not be Old Woman's Beard.

aristata refers to plumed tail 2.5 - 4cm long, of the seed.

aristate = bearing a small bristle.

Clematis microphylla Small-leafed Clematis

No need to explain this.

2. Correa reflexa Common Correa

Jose Francisco Correa de Serra (1750-1823) was a Portuguese scholar, statesman, botanist. He founded the Portuguese Academy of Sciences at Lisbon then fled to France to escape the Inquisition. His interest in botany led him to correspond with Sir Joseph Banks.

He described and named certain genera in Rutaceae to which Family Correa belongs.

The Correa reflexa of Warrandyte State Park usually bears green flowers. The red-flowered form is the emblem of the Field Naturalists' Club of Victoria. Correas have the common habit of hybridizing resulting in many forms that can be confusing.

reflexa, by the way, means sharply turned back. You will have noticed that the tips of the tubular flowers are indeed sharply reflexed.

Correa glabra Rock Correa

glabrous - without hairs, smooth. Leaves of the Rock Correa are dark green, often with a wavy edge and the plant is almost always found on rocky sites.

3. Comesperma volubile Love Creeper

kome (Greek) = hair (remember Brachyscome, short hair?)
sperma = seed.

This generic name alludes to the tufts of hair on the seed.

volubile means twining and that is just what the Love Creeper does in its own almost leafless way.

Veronica
calycina



SHIRE OF ELTHAM
PUBLIC FORUM



- * THE WELFARE OF YOUR CAT?
- * CATS KILLING AND INJURING WILDLIFE?
- * CATS WANDERING ON YOUR PROPERTY?
- * BEING A RESPONSIBLE CAT OWNER?
- * THE COMPANION ANIMALS BILL?
- * CAT REGISTRATION, DESEXING AND CONFINEMENT?

"CATS
- THEIR WELFARE AND CONTROL"

IF YOUR ANSWER IS YES TO ANY OF THE ABOVE, THEN YOU SHOULD ATTEND THIS PUBLIC FORUM. WHERE THE FOLLOWING SPEAKERS WILL PROVIDE THEIR EXPERT VIEWS AND ANSWER YOUR QUESTIONS.

Dr Peter Penson	Director, Bureau of Animal Welfare
Dr Carole Webb	Executive Director, Cat Protection Society
Richard Hunter	Executive Officer, Royal Society for the Prevention of Cruelty to Animals
John Seebeck	Scientific Officer, Department of Conservation and Environment
Dr Kathy McQuillan	National Manager, PETCARE
Dr Daryl Hoffman	Australian Veterinary Association (local veterinarian)
Garrique Pergl	Environmental Projects Officer, Shire of Sherbrooke

ELTHAM COMMUNITY CENTRE

(Corner of Main Road and Pitt Street, Eltham)

THURSDAY, 19 MARCH, 1992,

AT 7.30 PM.



The survival of a species is inextricably linked to the conservation of its habitat. LAND FOR WILDLIFE aims to encourage the retention and restoration of wildlife habitats on private land.

LAND FOR WILDLIFE began in 1961 and is administered by the Department of Conservation and Environment with the assistance of the Bird Observers Club of Australia. LAND FOR WILDLIFE is a voluntary nature conservation program which aims to support the maintenance and enhancement of native flora and fauna on privately owned or community owned land. The retention or re-establishment of natural vegetation on private land offers a valuable means of conserving flora and fauna, especially species whose natural habitats are now critically limited. This use of private land need not interfere with its use for other selected purposes.

For a property to be suitable for inclusion in the LAND FOR WILDLIFE scheme it should be managed in a way which clearly pursues the maintenance and enhancement of the native flora and fauna and/or should be managed in a way which attempts to integrate nature conservation with other land management objectives.

LAND FOR WILDLIFE SCHEME

After the landholder has applied for registration of the property, an assessor will inspect the property. During this assessment the property will be inspected to determine the ability or the potential of the property to support wildlife. The assessor will also review the intentions of the landholder and offer advice on any problems the landholder may have through change of land management.

Once a property is registered under the LAND FOR WILDLIFE scheme, the landholder will receive a certificate of registration and the LAND FOR WILDLIFE sign, as recognition of their efforts.

cont. over



- The landholder will receive a number of benefits including -
- * advice on native vegetation
 - * advice on fauna
 - * advice on availability of incentives and grants
 - * contact with other landholders
 - * information on LAND FOR WILDLIFE around the state
 - * opportunity to contribute to nature conservation in Victoria
 - * recognition of commitment, in the form of the sign to display.

The legal rights of the landholder are not altered in any way by membership to LAND FOR WILDLIFE.

For further information regarding the LAND FOR WILDLIFE scheme please feel free to contact me at the park office on 844 2659.

Virginia McCallum

Land for Wildlife Extension Officer Next month - A look at some local properties.

A New Way with An Old Enemy

Mechanical Suppression of *Allium Triquetrum*
using Carpet Underlay - by Mark Gardner

CONCLUSIONS

PART TWO

It is important to choose a site or sites which are of a size that can be worked easily without putting too much demand on valuable volunteer labour. It is also important that the site will be recolonised by indigenous plants rather than weeds.

The sites I chose were 4 M X 6 M approx. bordered by remnant vegetation & dotted with clumps of poa spp. (Tussock grass) *Acaia anserinifolia* (Bidgee-widgee) and *Prunella vulgaris* (Self-heal). Native Raspberry. ect

Underlay comes in many different types; hemp, horse hair, combination and one with a nylon mesh through it. The nylon will not break down so looks ugly and is a potential threat to wildlife. The underlay also comes in a variety of thicknesses, the thicker the underlay the better. Underlay cuts very easily with household scissors.

Insect and worm activity has been found very noticeable on soil surface just below the underlay.

Note: On a quite different site now three years old I could find no traces of bulbs in a recent inspection of the site. This site was treated by slashing and covered with underlay only, for three consecutive seasons. This site is a steep west slope with run off from a neighbours property. The run off has recently been redirected which I hope will benefit me in my efforts to remove the rest of the onion weed and revegetate with indigenous species.

A new site adjacent to this with it's first cover revealed a dramatic reduction in bulb size; the bulbs in the treated area varied between 5 - 10 mm with loose outer skins, while bulbs in untreated area varied between 10 - 15 mm with tight outer skins. It was very obvious from observation of these bulbs that the bulbs in the treated area were quickly being depleted of their reserves whilst the untreated were growing and multiplying healthily.

It is important to stop seed falling into plots if they are bounded by onion weed. This is fairly easily achieved by pulling away seed heads before they have fallen.

Copies of this complete article available from F.O.W.S.P.

Thermeda triandra

Reflections BETTER

THE ART OF FROGCATCHING by Pat Coupar

The reported decline in frog populations world-wide over the last few years, has led to a growing interest in these amphibians and a concern for their welfare. In Victoria the Department of Conservation and Environment, under the wetlands conservation programme, has initiated a project called 'FROGWATCH'. It is hoped that interested groups and individuals, with the aid of an excellent field guide and tape, will provide valuable information on the distribution and numbers of our Victorian frogs.

The project has certainly stimulated our interest in these animals. Now everytime we visit a wetland or riverine habitat the whole family is on the lookout for frogs.

In January this year, exasperated by ten days of consecutive rain in Melbourne, we decided to head north across the Divide, where summer temperatures are reliably hot. We chose, as our destination, the Barmah Forest which lies along the Murray River between Yarrawonga and Echuca. This forest is part of a great flood plain and numerous backwaters and billabongs exist in the area - ideal frog territory - or so we thought.

The Barmah is the largest area of River Red Gum forest in Australia and therefore the world, some of these eucalypts are over 300 years old. Although just over a quarter of the Barmah is reserved as State Park, the grazing of cattle is permitted throughout the area. Evidence of their presence was everywhere; fly-infested droppings (sometimes very close to the water) and impacted ground caused by hard hooves.

Nevertheless, there was an abundance of native wildlife. The Barmah and adjacent forests and lakes are an important breeding ground for many birds, and the area forms part of a major flightpath for migratory waterfowl. Cormorants, ibis and egrets were common, along with herons, spoon-bills and several species of duck. Brilliantly coloured Rainbow Bee-eaters delighted us with their antics.

At dusk the soft 'thump' 'thump' heralded the arrival of Forester kangaroos as they ventured down to the waters' edge to drink. Not such a gentle sound was the guttural grunting of koalas. I always find it hard to associate this vulgar pig-like noise with such appealing animals. Koalas are surprisingly common in the area, thriving on the leaves of the River Red Gums.

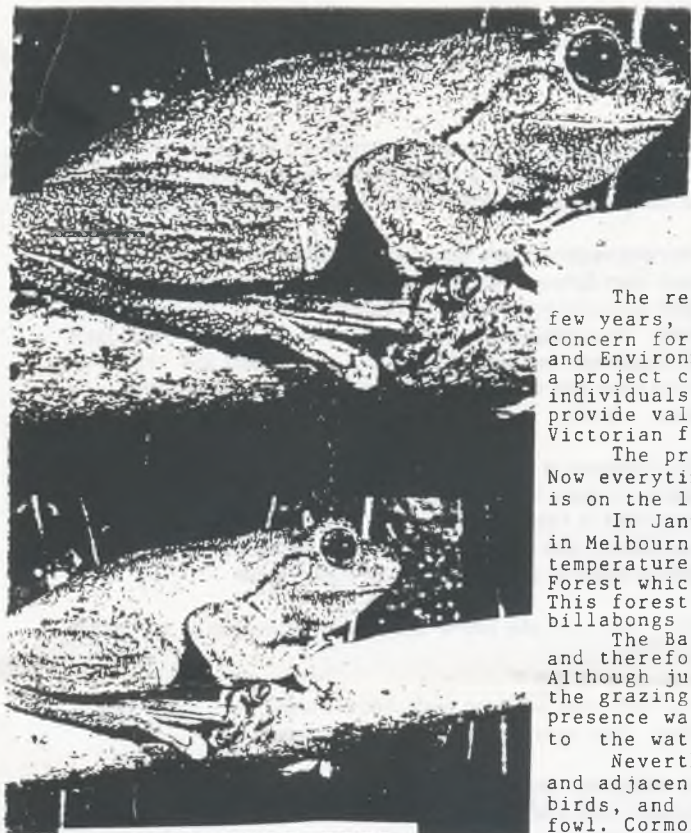
Each day we searched for frogs, and although the habitat seemed perfect we found none. We decided it was just the wrong time of year; the burrowing frogs had disappeared underground and the tree frogs had ascended the vegetation.

Our final morning, like all others, dawned bright and clear. The sun burned down on us from a sky of ultra-violet blue. The car was packed in readiness for the journey home and there was only the boat left to load. We were lifting the small craft from the water when suddenly Mike let out a loud expletive and went to grab his leg. Concern turned to delight when he realised that what had grasped him was a frog! It was a very beautiful Peron's Tree Frog which had obviously mistaken Mike's leg for a tree. Although this species is thought to occur in Warrandyte, it has not yet been officially recorded. Hastily all camera equipment was unpacked and the obliging frog duly photographed. It was then released to find a more appropriate vertical surface to climb and we returned home with the satisfaction of having photographed at least one more species of Victorian frog.

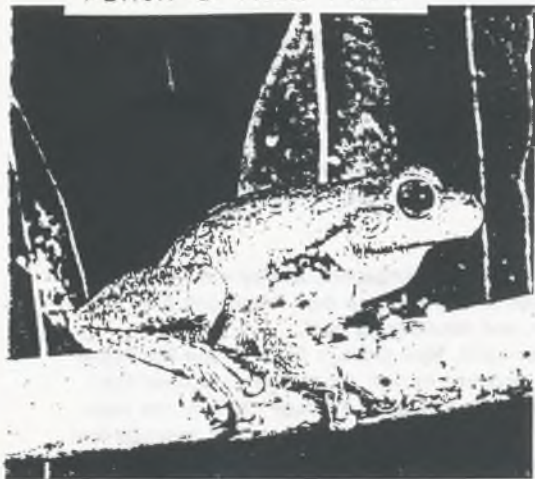
FROGNOTE

Several weeks ago the Rangers at Warrandyte State Park were notified about a large amphibian, thought to be a Cane Toad, found in a Doncaster backyard. It was massive, but definitely not a Cane Toad. Ranger Steve Anderson identified it as an over-sized Banjo Frog, this was later confirmed by the Arthur Rylah Institute. It certainly had us fooled - we thought it was a Giant Burrowing Frog!

GOOD ON YA' STEVE !



PERON'S TREE FROG



DONCASTER BANJO FROG





Mystery Reporter



'WE DONT ALWAYS HAVE SUCCESS EITHER'

- unsolicited statement overheard in the 'pricking out area' 11.25 am Thursday 20th February. This enigmatic phrase was uttered by none other than that difficult to track down FOWSPian committee member, Olive Isabel WALTERS.

Born 23rd March 1930 in ROMA, Western Queensland, Olive spent her childhood in country areas. Her father worked hard as a fettler in the Queensland Railways and her mother looked after "little railway station cum post office" at places such as Bungeewageri, Hodgson and then at Molendina (Gold Coast).

Starting with correspondence study at 'Bungeewageri' Olive's education continued at various one-teacher primary schools and then Southport High School where she gained a Junior Teaching Scholarship. Then 'matric' at Brisbane High and onto the then State Teachers College. Olive taught 'in the bush' for about four years, then married. She completed her teaching bond time and in 1955 Jean, the first of four daughters, arrived. The 'quadrifera' was then made up in 1957, 1959 and 1966 when Susan, Lesley and Maree turned up. So far Olive and Andy (her husband) have four grandchildren. (from little 'olives' great family trees grow - M.R.).

At this point in the interview Olive finally confessed to being coerced onto the committee "some sort of propagation-assistant" - the nomenclature changes from year to year. After this damning admission Olive also stated that when she (and Andy) lived in Tasmania (Andy had to work there in the 'Paper Industry'), she developed an interest in gardening and found that by planting native trees native birds visited; and the birds led Olive into a lifelong habit of growing plants for native birds.

On her arrival in the Melbourne area near Warrandyte she further developed her interest in indigenous planting.

Question: "How did you come to be involved in W.S.P.?"

Answer: "Um, when we came to Melbourne we didn't really know anyone, so I joined various 'friends' groups plus the Rosanne Golf Club. (The birds brought me to that Course)

Olive enjoys the learning experience with indigenous vegetation and "the feeling of belonging to the Friends and the Park. It can now be revealed by the Mystery Reporter that Olive is taking the non-indigenous plants out of her own garden and is replacing them with indigenii.

Apart from being an active participant and hard worker in FOWSP, Olive enjoys golf, ballet (did a little Scottish dancing when a child) sewing - dressmaking - cross-stitching. She used to make curtains, dislikes house-work, is sick of cooking (sic?), shopping and cleaning because - "they limit the time for more interesting activities".

As far as known haunts, Olive returns to Coochiemudlo Island, Southern Queensland, collecting plants indigenous to that area. She enjoyed swimming when young, can now float, but actually gets to the Island by ferry.

O.I.W. (her code name?) has had a few 'small trips' overseas, Bali, Singapore, Disneyland ("with the two younger kids"), Mexico, two weeks in Vancouver "when Andy had a job over there" and she achieved a childhood dream "crossing the Rockies by car, and returning by bus".

'The Grand Tour' was completed in 1990, flew around the world, New Orleans for Jazz, the Big Apple, the U.K, drove a hired car on the right side of the road, Scotland to visit her mother's relations, bus tour in Europe, Paris, "Euro-railed" (not to be confused with the Kangaroo Express - MR) to the taste of Eperney, Italy, Greece (ferry) and Corfu, eventually Hong-Kong and home. (Your M.R. suspects that the trip was really to establish iniquitous contacts related to food, visual gluttony and titillating travel networks!)

Your M.R. can now divulge Olive's 'nitty-gritty'. She likes the music of the 30's, 40's, 50's - jazz - swing. Her music has to have beat or rhythm and lyrics (secret messages?). Used to read novels, watches shows like Quantum, lots of 'nature' films, golf, comedy rather than soap opera and hates having to set through commercials.

She likes top food, haute cuisine, but cooked by somebody else. - likes steak, roast lamb, anything sweet but has limits on cream and butter food.

Enjoys wines, both red and white - at the right time. Twinings tea for breakfast, coffee for dinner. "My yuppie daughters have influenced my food tastes".

Vital Statistics Olive wears glasses due to presbyopia, no hearing aids in spite of being 'presbyaudic', has both her own feet, height - medium, weight average. Eye colour - "Greeny of course" (should all greenies have green eyes?)

Drives a Barina "as part of a scaling down of energy consumption (and money)".

Now it was obvious that Olive was foreshortening the interview as she had already been very difficult to drag away from the 'pricking out' of Dillwynia, Olearia, Hibbertia etc. so I thrust in a final incisive question. (If you are easily shocked do not read further - you have been warned).

Question: Criminal record?

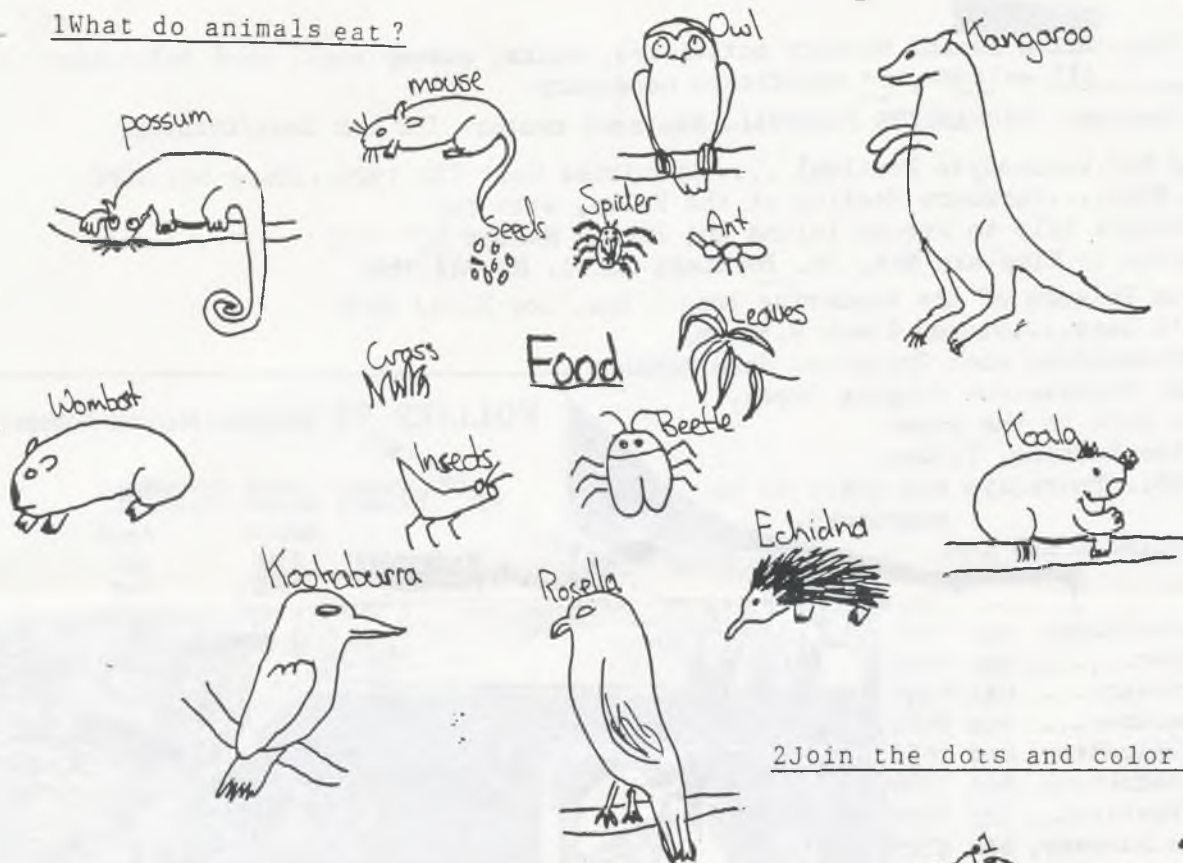
Answer: "Once I was pulled up for crossing double-lines in uptown Burnie, Tasmania.

"Not a Royalist, but not a Republican either, not a political animal. I like to grizzle about them all; and I hate being on committees, but I'm on two at the moment (Golf Club and FOWSP).

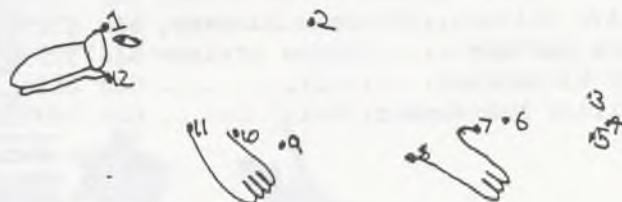
For the record Olive's maiden name was I.O. Callaghan (Irish), her mother's name was Scott (Scottish). Olive has had hundreds of nicknames, but called "Polly" at primary school. "My brothers called me 'Simp', short for ??? - and here-in ends another piercing interview by your M.R. Watch out for the rest of 'the Committee'.

'Fossicking Ross & Percy Pass'

1What do animals eat?



2Join the dots and color me!



I am a -----

Find our names!

Platypus snake eagle echidna native hen



Answers: 1. Possum-Insects, Mouse-Seeds, Owl-Insects, Kangaroo-Grass, Wombat-Grass, Koala-Leaves, Echidna-ants, Rosella-Seeds, Kookaburra-Spiders, Snake-Grass, 2. Platypus, 3. Platypus, Snake, Eagle, Echidna, Native Hen

Ross and Percy would love to hear from any of the Fowspianmites with a story or a picture puzzle, joke or game to share with us all. Write to them care of P.O. Box 220 Warrandyte 3113

Please fill in the membership details and send with a cheque to P.O. Box 220 Warrandyte Membership entitles you to a Free Indigenous plant at each Market and to also be able to join in all of our activities

DETAILS OF MEMBERS....

Names of all family members.....

 Address.....
P.C.....
 Telephone.....

Please include child-
 ages and special interests
 Family Subscription \$10

Dates for the Calendar

EVERY THURSDAY.....10am. Bring lunch. Nursery activities, walks, survey work, seed collection
All welcome, no experience necessary.

March 28-29th. Sat-Sun. WARRANDYTE FESTIVAL. Rostered members for our Tent/Display.

Volunteers preparing for Warrandyte FestivalEnquiries Gail 722 1926...Marg 844 1060

April 1...Wed.....7.30pm....Parkcare Meeting at the Folly, with Fay

4-5.....Overnight trip to French Island Enq Brenda Hunter 379 7375

12th Sun. Bus trip to Kinglake Nat. Pk. Bookings Shirl. M. 844 1895

Every Sat 9.00am Friends of the Wandering Brogil Enq. Joy H.844 2638

April 12/May 10 Gad's Gang....Stoney Creek 9.30 am.

Bradley Brigade- recommencing soon Enquiries Joan McMahon

April 26th Sun. Track Maintenance Jumping Creek.

May 3rd.....Friends Folk in the Foyer

5th.....Committee Meeting, 7.30pm.

AUTUMN TREE PLANTINGS...Thursdays and dates to be announced.

NEWSLETTER COPY DEADLINE APRIL 4th.

Committee

Margaret Burke.....Co-ordinator 844 1060

Ian Burke.....Editor..... 844 1060

Fay Harris.....Secretary.... 844 1448

Alec Manson.....Treasurer.... 844 2557

Pat Coupar..Propagn.Publication. 844 1650

Judy Thomson....Asst. Secretary. 844 1590

Gail Roche.....Crafts Festival.. 722 1926

Olive Walters...Propagn.Nursery. 846 4729

Mark Gardner.....Groups Advisor 844 3799

Joy Hildebrand..... 844 2638

Shirley Mandemaker.Social Sec... 844 1895

FOLLIES '92 (Magical Musical Follies)

WEST END STORY"

	March	April
Wednesday	25th	1st
Thursday	26th	2nd

P.O. Box 220, Warrandyte

GRAHAM MADELEY BACK AT WORK PAPERMAKING - THE FOLLY NEAR COMPLETION IN THE BACKGROUND.



REGISTERED BY AUSTRALIA POST
PUBLICATION No VBH 90 6982

If undeliverable return to
Friends of Warrandyte State Park
P.O. Box 220
WARRANDYTE 3113

SURFACE
MAIL

POSTAGE
PAID
AUSTRALIA

Pelargonium australe