



# FRIENDS OF WARRANDYTE STATE PARK

NEWSLETTER *Linc.*  
AUGUST 1992

EDITORIAL

With all the hype of the Olympic Games and the forthcoming elections we just have to have, the environmental problems we certainly do have are receiving scant attention from the media. Lately we have been presented with a rash of special features from T.V., radio, and newspapers that liberally plied with strange buzz words and catch phrases. We have been asked to consider 'a level playing field' through numerous 'windows of opportunity' whilst keeping in mind 'economic rationalism' and preparing to 'Fight Back' the threat of 'One Nation'. Is this really 'sustainable or even understandable?

Newspapers now present a baffling array of graphs, figures, and percentages of doubtful meaning, assuming that most people are trained to interpret them and gain useful information. Television 'Stars' have taken on a Guru mentality in spite of their lack of knowledge and practical experience. One wonders to what constellation they really belong. After all if Brian does not tell you, then Hinch or Vizard probably will!

People have maintained a fairly constant faith in science and technology over many decades. Yet we have had our fair share of scientific gurus with their rationalist models who have failed in their predictions. Failures are quickly forgotten. We tend to remember only successes. One not so scientific businessman recently let fly with this one: 'Environment groups live in a dreamworld.- the country can only look after the environment when it becomes wealthy.' I think perhaps the truth could be better expressed as, 'The wealthy live in a dream world.' The country can look after them, when it has cared for the environment.' Perhaps we should return from the stars and come down to Earth (literally). It is comforting to know that we do not need any funny phrases or catch words to understand the environment. Although modern living has deprived us of much knowledge from our elders, we are fortunate in having a Friends Network, (now this is a good buzz term) which provides us with a great opportunity to join an extended family. Here are many people with a great variety of skills they are willing to share with others. There is no hype, just a learning experience even if you may occasionally get your hands dirty.

00000000000000000000

"When you begin to thirst for knowledge  
you drink it in. You need not go out  
for it, nor away. The ocean of it surrounds  
us as the atmosphere".

"The more one knows, the  
more one simplifies."

"We live in an age when unnecessary things are our only necessities."

00000000000000000000

Elbert Hubbard

(The above quotes from 'A Thousand and One Epigrams' - Elbert Hubbard 1898.)

I.L.B.

## Family Day at Yarra Brae

FLORA ANDERSON.....YARRA BRAE.....FLORA ANDERSON.....YARRA BRAE.

Flora Anderson will lead a walk in the Yarra Brae section of the Park. This will be an opportunity for those people who have never been to this rather remote part of Warrandyte State Park to visit AND Flora will show them many of the mysteries of this region. We will pull some Broom as a prelude to the walk and afterwards we will drive a short distance to Flora's for a cuppa and chat. (Do bring a plate to share.)

SO...Meet at the dead end, Dudley Rd-MELWAY Ref. 24 H 7- at 1.00pm Sunday Aug. 30th. '92

Bring Gloves, two pronged weeders, walking shoes, arvo tea.

FLORA ANDERSON.....YARRA BRAE.....FLORA ANDERSON.....YARRA BRAE.....

*Clematis microphylla*



# Hot House Gossip

Congratulations to Lynne Stronell who has been appointed Manager of Melbourne Region in D.C.& E. She has been acting in this role for some time now. We look forward to a long and close association with her....Now Lynne, nag, nag, nag, nag, nag, nag, Management Plan, Fowsp want this and....

Great news from Greening Australia....we have been granted \$1500 to purchase the materials to construct a rabbit-proof fence around the Dam revegetation plot. All those precious plantings-which includes rare propagation material- will flourish, without individual rabbit guards, after it has been erected. Rabbits, as I probably have no need to remind you, are an absolutely horrendous problem at Pound Bend.

Our very efficient Membership Secretary has his computer programmed to deal quite severely with slack Fowspian response to subscription "pink slips" (we will try to keep them that colour- but no promises!) Membership keeps growing SO BE WARNED.

We missed out on advertising material for the C.A.B.'s Gilbert and Sullivan Evening sadly hope you all found out in one way or another. The Music in the Foyer is such a lovely way of getting the community together we really like to support the concept.

Bruce Bence, who was Val Polley's "Campaign Organiser" during the recent Council Elections would like to thank all F.O.W.S.P. members who helped with letter-box drops, handing out "how to vote" cards etc. Val was returned as Warrandyte Ward Councillor

July Newsletter has elicited quite a response, especially to the "cat" articles, several requests for permission to reuse the copy by Fay and Hildebrand has been agreed to.

Frogland, the "treatment planting" for our Nursery Run-off will also be inside the fence. The ducks continue to be fascinated by it and we await hearing resident frogs. Nestboxes will be located there and the staff have helped with positioning of a hollow tree felled during the bushfire.

The Burkes have acquired a telephone answering machine. They do not have it on during business hours if at home so take note that that is the best time to phone.

S.E.C. Friends committee have prepared our next project for areas to be rehabilitated with S.E.C. sponsorship. It will include a large number of Community Groups as well as F.O.W.S.P. and Parkcare. The area is across the foot of Professors Hill, both sides of the Stoney Creek Bridge, along the banks of Stoney Ck. and Brogil Brook and the roadside verge going up Research Rd. This will be a very exciting longer-term project which you will all no doubt notice on every trip to Eltham, Research or home! The Glynn's Rd project is almost completed with a few plants to go in as they become available and some direct seeding underway.

The book has continued to progress through all those mysterious, unidentified processes towards publication. Pat, Mike, Ken, Joan, Keith, Zoe, and Robyn mumble darkly about these and assure us that it is "going to schedule". Pat mentioned that after publication we need some folk with MARKETING SKILLS....If you can help please let us know.

Our Mark "Gad" Gardner has again been in print....this time in I.F.F.A. His techniques for use of Carpet and Underlay are really exciting and of course F.O.W.S.P. use these as widely as we can get the carpet or hair underlay. Any supplies are gratefully received and where possible the Park Staff will collect. Mark has begun his third year of trials at Stoney Creek and if you are interested in learning more come to the Nursery any Thursday or join Gad himself at Stoney Creek 9.30am Second Sundays each month. (Cathy Willis is also using it at the Koornung- first Wednesdays 10am!)

We are preparing to have Parkcare/F.O.W.S.P. "Lectures" on Plant Recognition...Indigenous and Weed species. These will take place at the Community Centre and we hope will be an ongoing thing.

Due to the popularity of the Bush Dance, albeit impromptu, last month we have booked the Community Centre for NOVEMBER 20th..Friday so children will be able to join in... The Hildebrands are getting together a professional band and we will invite some guest artists to perform during breaks. This will definitely be for all the family and we invite other groups in the community and other neighbouring environment groups to join in. Watch for details of charges, arrangements etc.

BUSH DANCE....COMMUNITY CENTRE.....THE HILDEBRANDS BUSH BAND.....COMMUNITY CENTRE...BUSH DANCE

Clematis microphylla



# Debby's Diary



There are many islands in the central Pacific and little is known about them in Australia. One very small island in particular most people know by name, but very few have had the chance to visit. Nauru has become more widely known for the environmental issue over land that has been mined for high grade phosphate rock. Nauru has not been an unfamiliar island to my family for nearly two years now, because for this time my sister has been living and teaching there. Nauru is not a tourist island and you need to get permission to visit. Late last year I was lucky enough to spend two weeks on the island.

Nauru is located in the central Pacific ocean 42 Km from the equator, 4000 Km from Melbourne and covers a land area of only 21 Km<sup>2</sup>. The island has been mined since 1907 leaving only the outskirts habitable. The effects of the mining don't hit you till you reach the highest point of the island and in every direction you look is a ghostly pinnacle landscape that covers four fifths of the island. The mining has not only reduced living space for the Naurans but has caused destruction to nearly all the jungle and its vegetation, restricted habitat for bird life and decreased rainfall. So why should Australians even bother about this problem? It has nothing to do with them. I can only see that we are the biggest reason why the island has suffered such environmental devastation. Australian farmers have been massive users of phosphates used as fertilizer. What can be done? Australia's proposal and solution was to move the population to another island off the coast of Queensland. If that's the case what happens to their social and cultural ties they have with their land? Their only real way to stay on the island and overcome the environmental problem is to rehabilitate. My experience talking to both older and younger generations was that they had no idea of the time and effort that would be involved in reclaiming such degradation.

They do need guidance from countries like Australia who have had experience with environmental problems. But how can they trust others when it was known before the mining started what damage would result?

Whatever decision they come to it will have to be soon, because the phosphate will run out sometime in the nineties. This means the Nauran government must develop alternative industries needing more land space. Since it became independent (1968) this small republic has a gigantic task in front of it if the people and their environment are to be saved.

## DEBBY'S NEST BOX PROGRAM

NAME BADGES.....

I AM TAKING THE  
LAST ORDERS FOR  
THEM THIS MONTH.  
THIS SERVICE  
WILL RESUME IN  
NOVEMBER.

Our Slide night with Patrick Fricker of Yarra Valley Met. Park will come and go as this goes to press. We have at this stage made 19 boxes and these are about to go up with staff help. The Lions Club funds were a great help and we hope to show them great value. If you have any suitable building materials please let me know on 846 2214. After the boxes go into place (most around the Orchard Area) we will have to monitor them on a regular basis, removing any non-indigenous species like Indian Mynahs or Starlings. This will be followed by careful census of local occupants.

## Frogland underway



Frogland after the work done during our Network day. All plantings require rabbit-guards until the fence is erected.





Networking Afternoon....."Multi-activity/multi-age/multi-cultural/multiple-group Day.

Well just how to thank all the people involved in the meeting of July 26th on that last Sunday Family Day? THANKYOU ALL.....So many people from so many groups, mostly neighbours, and we achieved so very much together in a happy atmosphere of friendship co-operation and mutual admiration. Each group also represented a large number of like-minded members and together I'm sure we can "change the world". Networking, looking for goals in common, helping one another to achieve these, caring for, nurturing, repairing the environment we share....enjoying these pursuits, employing all our talents together.

At a practical level F.O.W.S.P. was able to move mountains of mulch, underlay and plant the last few mature plants we had in the Nursery. Propagators managed to prick out vast numbers of wee seedlings and put a "forest" of cuttings on the hot bed. Flora and Elizabeth were guides and demonstrators of the direct seeding areas, and Debby had a small army of nest-box constructors. Huge numbers of broom seedlings, thriving after a bush-fire led "recovery" were pulled. Yabbies and Koala were surveyed. Ian Roche was welcomed back from leave and we all shared a B.B.Q and the Concert "Butterfly" has described. Special guests were Patrick Fricker (from Yarra Valley M.P.) and Jane Calder who re-routed their Walk-Talk-Gawk with friends from the V.N.P.A.

We plan to have a Network meeting at Pound Bend as a regular feature of every years programme. A WONDERFUL DAY FOR ALL OF THOSE WHO ATTENDED...LOVING THANKS TO ALL WHO HELPED



## Special Meeting - Watson's Creek by bus

SUNDAY, AUGUST 23rd, 1pm.

CAM BEARDSSELL.....BUS TRIP.....WATSONS CREEK.....BUS TRIP.....CAM BEARDSSELL.

A very special treat for Fowspians will be a Special Unscheduled Bus Trip to visit Watsons Creek. CAM BEARDSSELL will be our guide and give us a memorable grasp of the special significance of this precious waterway. Many of you will have experienced Watsons Creek at its confluence with the Yarra during our annual Canoe River Clean-up. It is a long time since we have had Cam lead a walk but some members who were there on the walk on Fourth Hill have reminded us and suggested another. Cam has been doing a special study of the Watsons Creek for Eltham Council and his knowledge of the sites could not be more up to date. Dianne Silveri will organise a cup of tea for us at One Tree Hill (bring something tasty to share!) Ron Golding will drive the dear old community bus (\$2 for costs) or follow in cars(full we hope) This will be a wonderful opportunity, Cam is always very busy so don't miss it.

MEET AT THE DEPOT..1.00pm SUNDAY AUGUST 23rd Prepare to catch a glimpse of many of the denizens of Watsons Wilderness!!!

BUS TRIP.....CAM BEARDSSELL.....WATSONS CREEK.....CAM BEARDSSELL.....BUS TOUR.

ENQUIRIES BURKES 844 1060



## A NOTE FROM PARKCARE

In September 1991, the Belgrave Regional Pest Plant Strategy Working Group produced an educational kit on common garden plants that are Environmental Weeds in the Upper Yarra Valley and Dandenong Ranges. This kit consists of a weed identification poster, a weed checklist, a guide on native plants and a series of weed control sheets. Together they provide a valuable guide to identifying and removing common garden weeds. Many of these weeds also occur quite happily in Warrandyte, as do a few others.

A working group for this region (consisting of representatives from Warrandyte State Park, Melbourne Water, Eltham Shire and Doncaster-Templestowe council) are currently investigating the possibilities and costs of reproducing a weed poster more specific to this region.

Support information on weeds and native plants are also being produced and will be available from the park depot. Currently in the brochure stand are copies of control sheets for 30 weeds which will guide you to removing your weeds from your property. These are freely available from the depot office.

## What's happening in the park?

ParkCare is running an Information Day at Whipstick Gully in Fourth Hill on August 23rd. This is a great opportunity for all to drop in and find out about ParkCare and Fourth Hill.

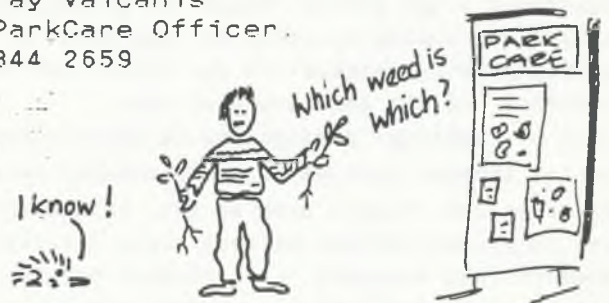
There will be information available on weeds and various ParkCare topics. Ranger Dave will guide those willing on some bush regeneration skills and provide an opportunity for "some hands" on action.

The displays will be up from 1 to 3pm, with environmental game at 1:30pm and bush regeneration at 2pm.

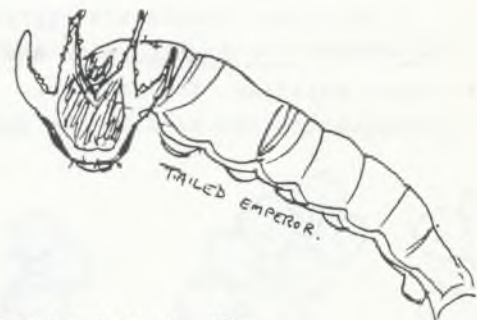
Drop in for a look, a chat or a cup of billy tea in bush surroundings. Everyone welcome.

For further enquiries contact me (Fay) at the park.

Fay Valcanis  
ParkCare Officer.  
844 2659



## Butterfly Droppings



### KINGLAKE

THERE WAS A GRATIFYING INCREASE IN NUMBERS AT THE ANNUAL LYREBIRD SURVEY IN JULY, ONE MEMBER EVEN SPOTTING A LYREBIRD.

### POUND BIRD NURSERY.

MANY VARIED ACTIVITIES HELD THE INTEREST OF THE GROUPS (BICA, MULLUM MULLUM, CSIRO ETC) ATTENDING OUR FAMILY DAY ON 26TH JULY. A BARBEQUE TEA WAS FOLLOWED BY A SHORT CONCERT STARRING A CHORUS LINE OF THREE DEAR LITTLE GIRLS (BILL, DON AND ELISE), ACCOMPANIED BY HILDEBRAND AND THE FRIENDS SINGING "WITH A LITTLE HELP FROM OUR FRIENDS." JOY THEN LED A REALLY 'GOOD FUN' FOLK DANCE WITH ALL AGES JOINING THE HILARITY. CONTRIBUTIONS WERE ALSO MADE BY A YOUNG QUARTET OF SINGERS AND A GUITARIST. THEN THERE WAS THE POSSESSOR OF A PET PUSSY WHICH HAD PERSISTENTLY PURSUED AND PARTAKEN OF POSSUMS AND OTHER WILD ANIMALS. HE COLLARED AND LED THIS FEROCIOUS ANIMAL AROUND TO DEMONSTRATE ONE WAY TO DEAL WITH THE PROBLEM. THE PUSSY REALLY ENJOYED THE ATTENTIONS OF ONE SWEET CHILD, JESSICA, WHO WAS FASCINATED.







# Reflections on Reflections

For centuries gardens have been a source of endless pleasure to a great many people. I was born in England and I grew up there. The English in particular are very proud of their gardens. Daffodils, dahlias, delphiniums and the sweet perfume of roses are etched in my memories of summers long gone.

Our first home in Australia was a small, white-painted weatherboard in Ringwood. It had a large back garden consisting mostly of grass and a few fruit trees. We wanted, not English roses, but an Australian native garden.

With advice from friends and the local nurseryman we bought grevilleas, hakeas, bottlebrush and banksias - unfamiliar names for unfamiliar plants. We needed something quick growing and wattles were suggested. One was especially recommended - the Cootamundra, with its distinctive bluish-grey, feathery foliage it was an attractive tree. When, in mid-winter, it bloomed it was spectacular. I was astounded at the mass of fluffy yellow flowers that overwhelmed the tree. However, the Cootamundra carries this beautiful burden only for a few brief weeks of the year.

By the time we moved to Warrandyte I had learned much about Australian Native plants. I learned the difference between 'native' and 'indigenous'. The exquisite Cootamundra was indeed native, occurring naturally in a small area of New South Wales near Wagga Wagga, but it was not indigenous to Warrandyte, that is, it did not originate in this area. In fact, the Cootamundra Wattle, stunning though it is, is an environmental weed. In my ignorance I had always thought of a weed only as something small, flat or grass-like coming up among my vegetables or in the cracks of paths. Something growing where it is not wanted and does not belong - that is the essence of the environmental weed.

On my ramblings through the Warrandyte State Park I began to understand the immense problem of environmental weeds. Plants originating from other countries. Plants such as ivy, smilax and onion weed, irresponsibly dumped in garden rubbish or even worse directly in the bush. Blackberries, Cotoneaster and Boneseed produce berries that are eaten by birds and other animals which then spread the seed far and wide in their droppings. Then there are the non-indigenous Australian natives like Pittosporum and Cootamundra, both of which appear in relatively undisturbed bushland.

All these plants are aggressive invaders. They compete with the local vegetation for light, water and soil nutrients, in time displacing them almost entirely. The structure of the vegetation is altered and degraded, consequently the habitat for our native fauna is reduced.



There are many very beautiful Australian native plants and indeed exotics that are non-invasive. It is not my intention nor is it my wish to deny anyone the right to plant them in their gardens. However, there are a number of plants for sale in local nurseries that should definitely be avoided. They include Cootamundra and Sallow Wattles, Cotoneaster, Spanish Heath, Cape Broom, Bluebell Creeper and Ivy. There are several reasons for considering the use of indigenous plants instead. For instance, they grow well in local soils, do not require fertilisers and are adapted to survive with little or no water.

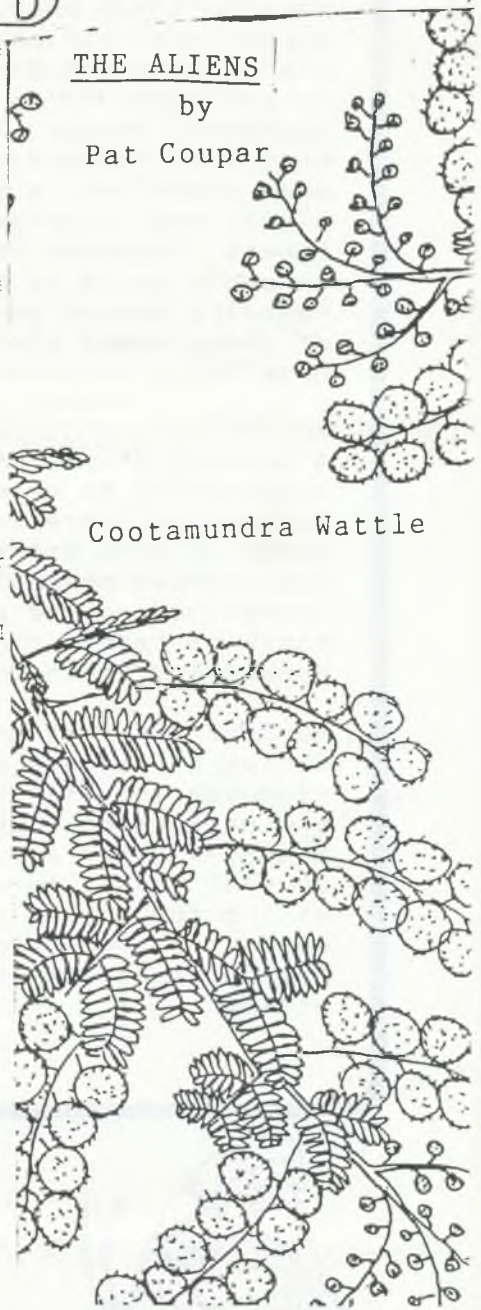
The fragments of original vegetation that still remain in the Melbourne region are few and very precious. Places like the Warrandyte State Park are a vital refuge for that flora and fauna that is undoubtedly under threat from increased urbanisation. We who chose to live in Warrandyte have, I think, a moral responsibility to prevent the spread of environmental weeds. It is up to us to ensure that the plants we grow in gardens will not escape to invade the bushland and that garden rubbish is disposed of thoughtfully. Because once these dwindling, fragile islands of remnant bush are lost they are gone forever.

## THE ALIENS

by

Pat Coupar

Cootamundra Wattle





## Mystery Reporter

### SECRET(ARY) EXPOSED

Alert readers of the back page of the July 1992 FOWSP Newsletter will have seen an apparently innocuous list of names headed 'COMMITTEE MEMBERS'. The third line reads 'GAY HARRIS - SECRETARY' followed by a contact 'phone number.

'Committee Member' - can any other two words in any language strike such fear and terror into law-abiding citizens? "I'm actually a closet exhibitionist", said GAYNOR JUDITH HARRIS - nee OMLAND (Norwegian). "My father was a Norwegian Merchant Seaman who met my mother in Sydney during The War (1942)."

Gaynor was born in Crown Street Women's Hospital - which has now been demolished. She has four younger brothers (and they still are). Gaynor's role as Secretary involves her in writing letters for FOWSP.

Her hobbies - an inveterate reader, her favourite authors are Fay Weldon, Margaret Attwood, Anne Tyler etc. She "used to read anything in print", but now has to be more selective as it takes time to find her glasses. She particularly likes reading the Mystery Reporter's articles!

Other hobbies - Gaynor likes participating in water sports (probably related to Sydney Harbour) - canoeing, water skiing, wind surfing, swims regularly at the pool at the 'Uni' (where she works) and the Ringwood Aquatic Centre. She doesn't like snow skiing.

Did a Physical Educating Teaching Course at Melbourne University (claims she was the 'grandmother' of the class), tried most sports - football, soccer, rock-climbing, Kayaking and did circuit training. Since 1978 Gaynor has been at Melbourne Uni "one way or the other" either studying and/or working having just completed an Arts Degree "double majoring" in Psychology and Fine Arts.

From 1980 to 1984 Gaynor did 300 'relief' days teaching primary level in areas around Doncaster and Winlaton. (The mystery deepens if you are aware that the TRIAD system was in use at WINLATON during the period). Also worked in a Women's Refuge over a period of seven years on a casual basis. After this she started work at the 'Uni' as an administrative assistant to complete her degree.

As a result of her experiences Gaynor has concluded that real solutions to many problems lie in treating the causes such as poverty, lack of education and inequality of opportunity but the way our society is structured the cycle of institutionalisation only 'band-aids' the symptoms and consequences. She agrees with former-Mayor Kock of N.Y. who said, "if the social welfare dollar went straight to the poor, there would be no poverty!"

From Darlinghurst Primary School to Dover Heights Girls High was the early period of her education. Gaynor left after intermediate (she was the youngest in the class and had to get a certificate from the D.L.I. to work at A.C.I. at 14 years of age. A.C.I. sent her to the Metropolitan Business College where Gaynor obtained a Business Diploma. She met her husband '2B' who worked in A.G.M. quality control laboratories, married in 1963, had two girls and a boy in Sydney then moved to Melbourne in 1971 following husband's job prospects with B.A.S.F. In 1975 went to Germany for three months, returned and started Mature Age H.S.C. at Box Hill Boys' High School - night time

study. Currently her grown children have "flown the coop", one in Nepal, another in Boston and the other to "house-sit".

Over a cup of Iris' soup the M.R. discovered that Gaynor is interested in all forms of ART, THEATRE, ARCHITECTURE AND LITERATURE (she was seen by the MR some months ago at the M.T.C. watching a David Williamson play!)

Gay (her alias) watches Channel 2 and S.B.S., loves the Simpsons, plays tennis and loves walking. She also enjoys chocolate ice-cream and cream and nuts for breakfast.

Favourite foods - fried tomatoes and onion on toast, likes seafood - but not oysters.  
Favourite drink - Earl Grey Tea - can't drink much alcohol as it depletes her Vitamin B, but does like champagne.  
Favourite Heroes/Heroines - all the 'unsung' ones.  
Dislikes - violence, privilege and prejudice

Drives a SUZUKI Alto (white), lives on a steep slope, has a mixed garden leaning towards indigenous, likes sitting in the sun reading, likes people but also solitude, and can 'keyboard'.

Question What brought you into FOWSP?

Answer "I used to be in WEL, wanted more 'hands on' and community involvement - I was 'flinched' from the WEL tent by MARGARET B---- and I find FOWSP exciting. I've watched the group grow to the success it is today."

Question ..... (unspecified) .....

Answer "When I failed in neuro' anatomy".

Vital Statistics Blue eyes, 5' 3", 60 Kg, blonde hair

Favourite Music Likes most, but in particular Phillip GLASS, an American composer of electronic music.

Criminal tendencies? - always jay walking, used to practice fare evasion, one speeding fine and a couple of parking fines. Spent three years at Winlaton, has had a tonsillectomy, is a femo-socialist-capitalist!

Is also the initiator of the title Butterfly Droppings when she was the Social Butterfly. (Butterfly Droppings is/are currently being dropped by our Social Secretary - Shirley M-----, also a committee member). Gay also recalls five fabulous weeks in New York.

And so another exploratory interview ends. The next sacrifice to the truth may well be Judy? Gail? Joy? Shirley? or Cathy? OR as yet un-named members of Construction and Maintenance or other people in the 'beehive' housed at the Pound Bend Depot. Agent 87 (alias the M.R.) casts a deep net.

A.C.I.

A.G.M.

B.A.

B.A.S.F.

D.L.I.

FOWSP

Australian Consolidated Industries

Australian Glass Manufacturers

Bachelor of Arts

Badische Anilin and Soda Fabrik

Department of Labour and Industry

Top secret organisation specialising in 'plants' and underground/undercover work.

H.S.C. - MTC - SBS - WEL

Classified info. - refer to the Crimes Act or to Gaynor



## FASCINATING FACTS FROM FLORA

### The Black & white story of Paperbarks and the enigmatic Burgan

#### Kunzea ericoides Burgan

After Dr Gustav Kunze (1793-1851) professor of medicine & botany, Leipzig, who wrote mainly on ferns, sedges, economic plants and fungi.

He was one of the botanists who worked on Preiss's collection of Australian plants (1844-48)

Kunzea ericoides is a reminder that classification systems are man-made and that nobody has told the plants about them. Many plants do not fit exactly into genus. Like that pesky child that neither side of the family will own to!

Kunzea ericoides has had more than one name change - Kunzea peduncularis, Leptospermum phyllicoides and now K.ericoides.

In Kunzeas the stamens are longer than the petals.

In Leptospermums stamens are shorter than the petals.

The specific name ericoides refers to the leaves (like an Erica)

#### Leptospermum continentale Prickly Tea-tree

Used to be known as L.juniperinum which describes the rigid, prickly leaves perfectly.

leptos - tiny  
spermum - seeds

As for continentale - I know not. We all know what a continent is.

#### Leptospermum lanigerum Woolly Tea-tree

lanugo - down-like hair. Refers to the soft hairs of the calyx and reverse side of leaves.

#### Melaleuca ericifolia Swamp Paperbark

melas - black referring to the contrasting colours of the papery bark.  
leukos - white

ericifolia - leaves as in the Ericaceae family

*Kunzea ericoides*

#### Hydrocotyle spp Pennyworts

Greek hydro - water

kotyle - a small cup, from the form of the leaves in one of the species which are slightly depressed in the centre.

6 species have been recorded in Warrandyte.

#### Leucopogon virgatus var virgatus

leukos - white (we've just learned that have we not?)

pogon - beard alluding to the white-bearded corolla lobes. If you have problems with 'corolla lobes' just look inside the flower.

A lovely sight through a hand lens.

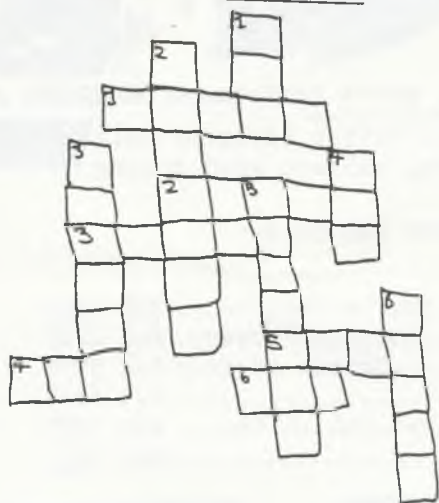
virgata - twiggy



# Fossicking Ross & Percy Pass.

PUZZLE PAGE

## Animal crossword.

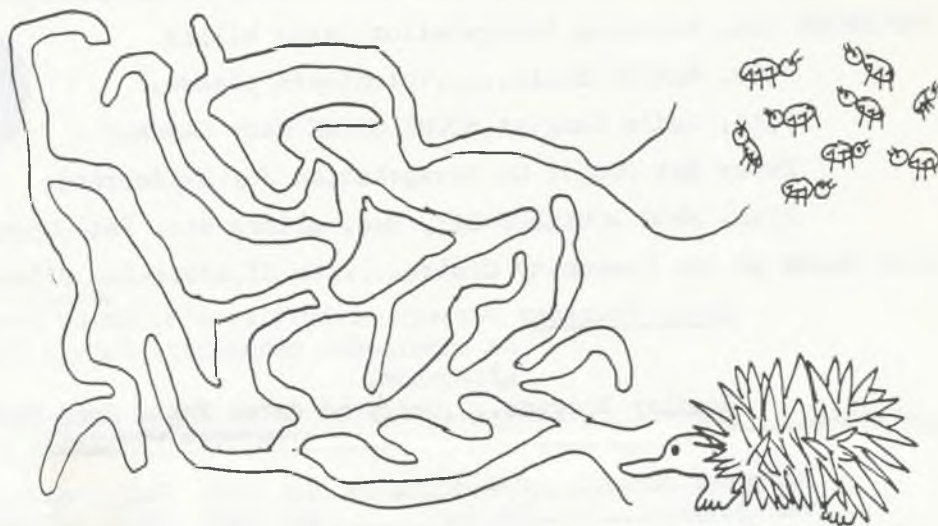


### ACROSS

1. A grey, fluffy animal which lives in gum trees.....
2. A legless reptile.....
3. A small house rodent.....
4. A small flying animal which name is the same as a piece of cricket equipment....
5. A bird which goes quack.....
6. Edwards dinner.....

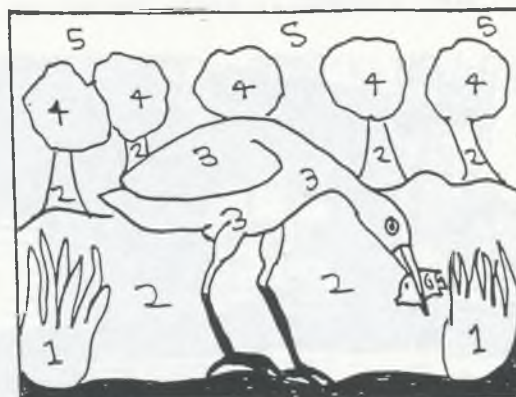
### DOWN

1. A night bird which has large eyes.....
2. A tree dwelling animal which could have a ring or brush tail.....
3. A large animal which lives in a burrow.....
4. A snake like animal which lives in water.....
5. Edward.....
6. A small lizard.....

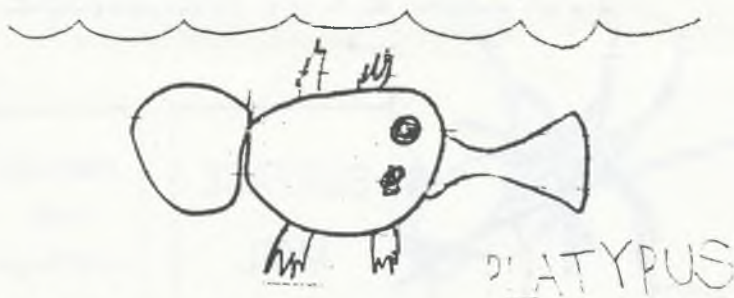
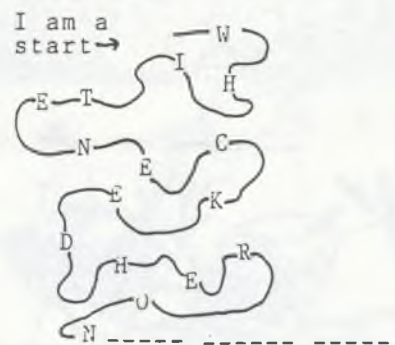


Help Edward the Ekidna find his dinner.

## Color the numbers.



- |               |              |
|---------------|--------------|
| 1=Light green | 4=Dark green |
| 2=Brown       | 5=Blue       |
| 3=Grey        | 6=Orange     |



by Thomas H. King.

Crossword answers: ACROSS 1. Koala 2. Snake 3. Mouse 4. Bat 5. Duck 6. Ant.  
DOWN 1. Owl 2. Possum 3. Wombat 4. Eel 5. Ekidna 6. Skink.

MEMBERSHIP...RENEWAL(OR NEW MEMBERS WISHING TO JOIN)

SEND WITH CHEQUE TO P.O.Box 220,  
WARRANDYTE  
Vic. 3113.

Details of Members

Names(all of family,ages of children).....

.....Any special interests?

Address.....Family Subscription/

Telephone No.....Single \$10.00

Any suggestions.....Donation.....

..... FRIENDS OF WARRANDYTE STATE PARK INC.



DATES FOR THE CALENDAR.....Some Special Events so PLEASE NOTE!

AUGUST 23rd Bus Trip, Watsons Creek CAM BEARDSSELL

30th Family Day YARRA BRAE Walk led by FLORA ANDERSON.

SEPTEMBER 2nd. Koornung Revegetation Cathy Willis

5th. MARKET STALL.....Volunteers please.

13th. Gad's Gang at STONY CREEK Mark Gardner

Every Sat Brogil Cr Revegetation Joy Hildebrand.

27th. FROG WORKSHOP DAY, Bus, slides etc. Pat Coupar.

BUSH DANCE at the Community Centre...with Hildebrands, O'Leary, guest performers NOVEMBER 20th

Every Thursday Nursery Activities etc. Bring bread & butter (Soup is on!)

No experience necessary. Survey Plants, collect seed during afternoon.

Bradley Brigade.....Sorry no dates Phone Joan MacMahon 844 3213

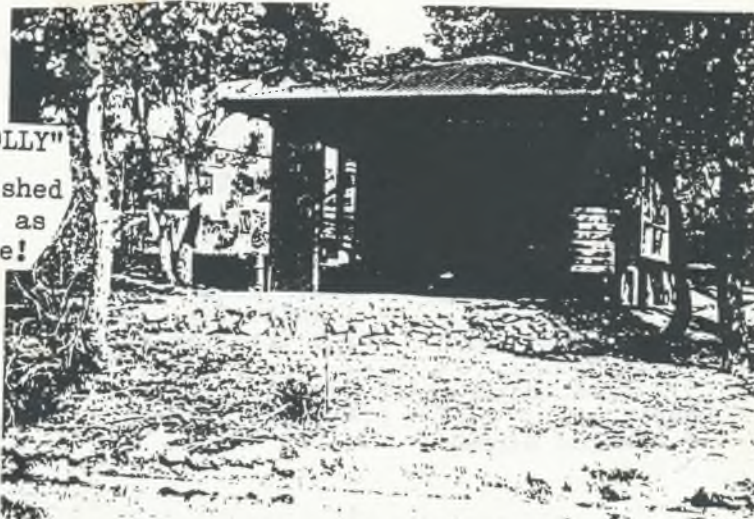
COMMITTEE MEMBERS.

Margaret Burke.....Co-ordinator	844 1060	Gail Roche.....Crafts Festival..	722 1926
Ian Burke.....Editor.....	844 1060	Olive Walters....Propagn.Nursery.	846 4729
Gay Harris.....Secretary....	844 1448	Mark Gardner.....Groups Advisor	844 3799
Alec Manson.....Treasurer....	844 2557	Joy Hildebrand.....	844 2638
Pat Coupar..Propagn.Publication.	844 1650	Shirley Mandemaker.Social Sec...	844 1895
Judy Thomson....Asst. Secretary.	844 1590	Cathy Willis.....	844 1841



"THE FOLLY"

Now finished  
as well as  
in use!



P.O. Box 220, Warrandyte

SURFACE  
MAIL

POSTAGE  
PAID  
AUSTRALIA



REGISTERED BY AUSTRALIA POST  
PUBLICATION No.VEH 90 6982  
If undeliverable return to  
Friends of Warrandyte State Park I ..  
P.O. Box 220,  
WARRANDYTE 3113.

*Clematis microphylla*