



FRIENDS OF WARRANDYTE STATE PARK NEWSLETTER

MAY 1993

EDITORIAL

Just this week some Australian bank economists released the latest prediction about Gross National Product showing a rise of 3.5 % instead of 4.5 % that was suggested at the beginning of the year. They went on to say, "...this gloomy news would mean the economy would remain depressed until late 1994."

Now G.N.P. is really just an economic indicator of consumption based on exchange of goods and services that "create wealth." It is a trite invention of economists that completely discounts the environment and human activities affecting all societies around the world. Man is just one of 30 million species on the planet that has devised a system that measures value on its own terms exclusively. The destruction of entire ecosystems is a reality as economic thinking does not factor Nature in its equations. The kinds of growth and wealth are the very ones being pursued at the expense of survival.

If you think all that is a bit complicated and feel that our world political leaders would help to clarify matters, then consider some of the statements offered over the past three years.

From George Bush (who called himself "the environmental President") : "The environment is an issue that has to be addressed at the highest level of government. Wherever it is possible we must guard against costly economic solutions that interfere with the free market and economic growth!...."

In 1989 P.M. Margaret Thatcher made a moving speech to the United Nations in New York warning that...." it is life itself that we must battle to preserve. The evidence is there and the damage is being done." Then she added...." We must have continued economic growth to generate wealth to pay for the protection of the environment."

Around the same time P.M. Brian Mulroney in Canada when addressing an international conference,...."Among the serious problems facing society, none is more acute than the deterioration of our environment. We believe there are no limits to economic growth, other than those imposed by our imagination, but we realise there are real limits to natural systems and resources...."

Such statements could easily earn any of them a place with Alice in Wonderland. We have ever increasing numbers of people on a planet that is producing decreasing supplies of food. Our plight was more aptly described by Thomas Malthus...."Famine, diseases, war, or moral restraint will be the necessary checks such growth....Premature death in some form or other will visit the human race." This was from an essay by the Rev. Thomas Malthus written in the year 1798.

"The goal of development for rich and poor must be to create conserver societies. That basically means the rich must live more simply so the poor may simply live."

E. Trainer. Educator

" We live in an age when unnecessary things are our only necessities."

Elbert Hubbard.

Echinopogon orata

B.B.Q. CONCERT
FRIDAY MAY 28

IVY ACTION JUNE 27.

HOT HOUSE GOSSIP

Allocasaurina littoralis

Have you been to the depot lately? Well changes to the Nursery will probably amaze visitors. The big new winter greenhouse is near completion, the new hardening off area has been FULL, nearly emptied, is being refilled and mountains of mulch moved onto weed-mat to carpet the whole nursery areas. Putting the big greenhouse into the production process will mean lots of winter growth and spring plantings. The men who did the building have designed and erected a most inovative hothouse which will withstand earthquakes, bomb blasts and rabbit invasion. Don Cameron has been the brains(and brawn)behind the task and he will no doubt enjoy the two months break he and Barbara well deserve. Any men looking for a nice energetic task over the winter.....see Ian or Alec.

Newsletter shows that Kym Docwra is much missed whilst she does a course about Rural Machinery and their uses.....Lots of typing errors, too much squeezed onto the Calendar, Marg running around frantically trying to do all Kym's tasks as well.....we need a regular "reserve" computer operator....see Marg (844 1060)

Another position going is that of Co-Librarian. Margaret Humphreys is Librarian BUT she does have little time and much work SO.....who would like to help her on a WEEKLY REGULAR basis. The Fowspian would have to also do the chasing after late returns! The library has become quite a good collection of books and this would be an interesting and rewarding job. Talking about books....of course all Fowspians need a copy(or two) of "Discover Warrandyte, but don't forget that Pat and Mike Coupar's "Flying Colours" is still available at a special discount price (\$17) to members. Both books are obtainable at the market stall or by order to P.O.Box 220. We are also listening seriously to the people asking us to produce poster size copies of the marvellous photos in Discover Warrandyte.

Had a call from Glen Martin of John Spencer Real Estate who have sold many copies of our book to people looking to move to this magical part of the world. Glen wanted to know when our coffee table version was due out!

Lots of lovely feed-back from other admirers of our publication.....of course we know it is a wonderful book, filling a long vacant niche....but it is nice to receive letters or calls underlining the fact. Of course there are a couple of the teensiest mistakes. Naturally we just need you, our loving members, to write them down(with page and para. number) pass them to Pat and the reprint WILL be perfect.

We have a new group of members who have become a vital new crew for the Thursday activities "Big Al" Tyley brings his special trainees each week and they have settled to work wonderfully. "Big Al's Garden Guys" they have named themselves and we can see that VERY soon we will wonder just how did we ever do without fellows like Greg, Ian, Rocky, John and their mates.

Marg faced the music alone last week with a long interview with Leigh Hay on Plenty Valley Community Radio. She wanted to know all about the group AND "Discover Warrandyte". Any help with marketing will be most gratefully received as Gay and Linda explain elsewhere but Marg would like here to thank those already involved in the marketing group. Very exciting but of course a whole new ballgame for F.O.W.S.P.

New outlets for sales in the town are "Needles and Pins" at West End. As you see already John Spencers is a retail outlet (also giving copies to new residents) and we misnamed the Lace shop....Just the Place is its name! Athol and Jill Warman at the West ends Newsagency seem to be forever ordering new stock....so we award them the first special "Booksellers Wildflower Garden" as a thankyou. We point out that a very small margin exists for local retailers....they all do it more for the community service so do give them your custom.

Another group of people VERY worth of patronage are the large number of young members who give their time and skills to us as they work themselves through the courses all seem to do. Many of these wonderfully reliable young folk have had many knock-backs in the jobs-market and must feel those blows to self esteem...not to mention to income. So if you have an "odd-job" come along of a Thursday and see the skills they have to offer.

The schools were very evident in the Park during Arbour MONTH-we can't fit it in to a week! Thanks to all the members who came along to lend a hand.

Well the "slide night" in the Folly - with Neil Archbold on Friday May 24th proved rather different than the kind of thing we expected. Ian and Gail arrived late....so no access to the office....therefore NO projector! Neil reflected that he hardly needed it anyway as we all owned up to knowing what a dinosaur looked like. SO we were treated to "one of my rambling dissertations about all sorts of nonsense."

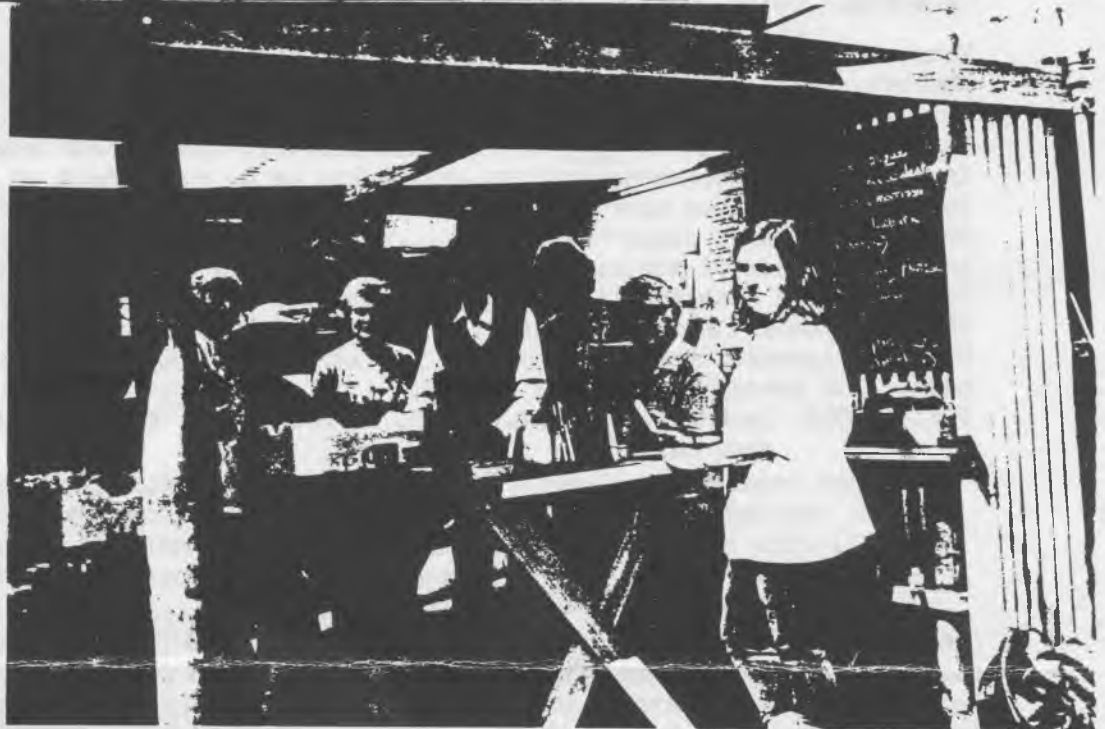
The evening was freezing despite the Pot-belly. The rain drops fairly rocked the roof but the 25 Fowspians assembled nary moved a muscle as Neil took us on a journey....by time machine and space craft (at the speed of light of course!) to look at the Past, Present and to speculate on the Future.....immediate and far removed.

We who were there will no doubt all look forward to Neil's next visit and only hope for slightly kinder treatment by the elements.



Pat Coupar, Glen Terry, Bill, Helga, and Bethany recently visited the nursery. Bill and Helga inspected the building works at the nursery (see the big letter greenhouse "underway") and Pat gave a guided tour of our Brogil.

Pat, Helga, Glen, Bill, Helga, and Bethany recently visited the nursery. Bill and Helga inspected the building works at the nursery recently. This area will be extended and made much more comfortable for workers this year. Drainage went in last winter...you don't need to wear gumboots to prick out seedlings any more....so what more could you want!!



Friends of the Wandering Brogil

.....Arbour Week Planting.

We are still feeling quite overwhelmed by the help and support we received in our latest advance up Brogil Creek. Glen Terry - Eltham Parks and Environment Officer - supplied us with 250 trees, shrubs and grasses, stakes and mulch along with his help on the day and in preparation. Glen has always been keen - backing our project. Lark Gardner - with us from the beginning - "visited" some of our less desirable vegetation and now we will watch them quietly fade away!

P.C. & S.R. gave us a box of lush *Podocarpus ovata* plus a box of *Carex aopressa* for our experimental bare root planting. Pat Coupar painstakingly and lovingly made new homes for them in the Brogil bank mud. Ray Valcanis - Parkoore - arranged our letter drop, organised morning tea and promises her continued help.

Seven of the thirteen households on Brogil Road were represented and all worked very hard and an air of excitement was present as we looked at what has been achieved. The team all seemed inspired to transform the little brook. Friends of the Bradleys Bush helped as did the Koorong - the MacMahon family and Marg and Ian Burke. Marg was quick to spread her admiration at the progress we have made in such short time.

Thankyou everyone for your help, your support, your compliments and well wishes.

Friends of the Wandering Brogil.....Joy Hildebrand.



..... from the marketplace

In these days of high unemployment think how impressive 'book distributor' would look on your resumé. Linda (2541 or 616 1610[bus.]) or Gay (1441 or 685 9361[bus.]) would love to hear from any member willing to help with getting Discover Warrandyte into the stores. **The book sells itself** - its a matter of leaving a copy at any store in surrounding areas, following up on their order and leaving your number for their re-orders! If you can help with school orders please contact Robyn Carter (3963) who is also co-ordinating the local area.

As well, Linda is looking for a member willing to be our Library Liaison person, who can rotate our display at local libraries a week or so at a time for the rest of the year. Shirley Mandemaker's giant book will be the focal point for the display along with mobiles etc. Any offers of help with ideas for such would be welcomed. Please get involved, it's a rewarding experience.

Food for Thought ?

Many courses, seminars, training programmes etc are around at the moment. We are able to improve skills in many areas. Bulletins are pinned up in the Folly or published in the Newsletter. Of concern however is the high cost to individuals (who already pay subs and give the most precious gift of TIME and LABOUR). Many of our members are on very limited incomes, the group subscriptions are as low as we can manage so it is difficult for either to afford these (we have subsidised all to date). Employees of managing agencies or contractors at very least claim tax relief....volunteers nothing. In fact volunteers seem to be the subsidisers of training sessions for employees of many Government/semi-Govt. organisations. We urge members- if attending- to point out the inequity, indeed the foolishness of this situation. If voluntary labour is to be well trained, informed and efficient SURELY Managing Agencies have much to gain providing training and education free....at least to members of recognised Friends groups.

PLEASE NOTE: Parkcare and Dept. C&N.R. DO NOT CHARGE their volunteer labour source- thank goodness! ~

Parkcare courses have been a wonderful way for Fowspians to build up skills over the last weeks. Ten members passed their "Herbicide Proficiency Certificate" this month. They are now all able to use herbicides in the Park as volunteers. This will greatly supplement the work the staff do and the areas which are impossible low on the priority list WILL be able to perhaps receive attention.

Other courses on offer will develop identification skills and cover Frogs, Fungi and Ferns, mosses and lichen. These are all free to members and the skills developed will aid in your work as volunteers as well as being absolutely fascinating.

REGULAR INVOLVMENT IN FOWSP ACTIVITIES IS AN EDUCATION AND TRAINING PROGRAM IN ITSELF! SEE YOU.



Propagating Indigenous Plants for the Parks and Bushlands of Ringwood

Project Aims:

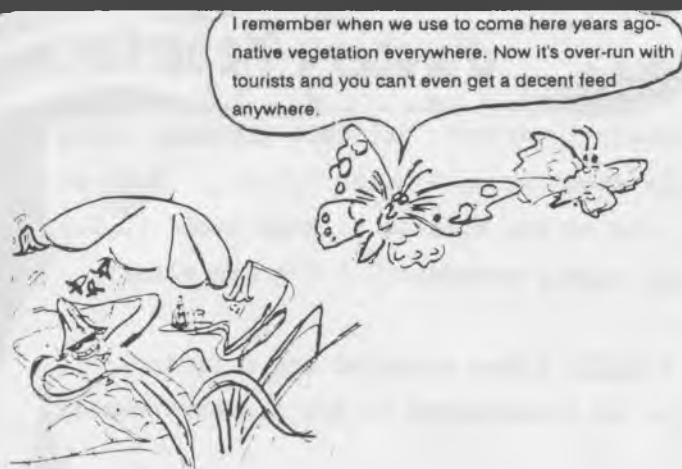
1. To preserve and maintain the indigenous vegetation and its biodiversity within the City of Ringwood.
2. To propagate indigenous plants from locally collected seed and plant material using Council and Community resources on an on-going basis.
3. To provide indigenous plants for planting into Ringwood reserves, school grounds, and for other Council and Community purposes.
4. To set up an indigenous seed bank for Ringwood.
5. To foster a greater knowledge, care and understanding of the indigenous plants of Ringwood.

Further information

Ken McInnes (870.2541)

Eva Buchanan (870.5201)

or Brad Curtis Ringwood Parks &
Gardens Department (871.0286)



A Report on the Angled Onion Festival - April 28th '93

The half day festival was co-ordinated by Doncaster Pest Plant Advisory Committee to alert land managers of the invasive potential of Angle Onion (*Allium triquetrum*).

Angled Onion finds its native home in the Mediterranean Region, and was actively cultivated in England for its flowers and recommended for wild gardens. In Victoria it quiet happily occurs through 8 vegetation communities ranging from rocky outcrops to heathy woodlands. It is a noxious weed which grows where winter rainfalls are good, soils are loose and high in nitrogen, organic matter and are acidic in nature.

So what does it dislike? Dry soils, low in organic content, heavy clays that form crusts and trampling. There are also a few natural predators which effect its growth. Onion Mildew Fungi- the fungi effects the leaf cells, turning the plant yellow before dying. It can also effect the seed head and main part of the plant. Pink Root Fungi- this effects the roots depleting the plants energy stores and in attempt to produce new roots, its energy is further depleted until the energy stores are completely exhausted. Neck Rot Fungi- this effects the plant in its dormant stage attacking the growing points in the bulbs.

There are also predators of the invertebrate variety. Onion thrips suck nutrients out of the plant and Onion Carrot Fly eats the growing points which is then susceptible to fungi rot. Before you rush out for bulk orders, these parasites are not commercially available - sorry folks.

Growing Life Cycle

1. Dormant bulbs- these remain in the soil from the previous year. They send the stem up (late May) and 3 weeks later send roots down.

2. Bulb exhaustion stage. After sending up its shoots the plant is not getting any nutrients from the soil but from the bulb only. At this point the plant is at its weakest with no reserves to come back to.

3. Flower spikes- white bell shaped flowers are produced late winter. After sending its flower spike up new bulbs have formed. Once these bulbs have formed they are ready for dormancy.

4. Flower heads get higher with seeds in them. The seed cap doesn't open and disperse the seed, instead the seed rub away down the stem resulting with "clumps" of Angled Onion around the base plant.

Each plant may have up to 15 flowers which contain 6-9 seeds per flower.

Seed dispersion is mainly via humans moving soil or water movement, not by birds. Seeds eaten by birds are destroyed before they are passed out.

Angled Onion has a waxy layer on its leaf and stem. This doesn't allow water to settle on the plant. The water forms beads which roll off the plant. This doesn't allow pathogens to stick to plant.

Case Studies

Mark Gardner (DCNR), Marianne Henderson (Eltham Shire) and Jenny Francis (ex Project Manager, Save the Bush) presented case studies of their work with Angled Onion.

Experience in carpet underlay proved an effective method where the Angled Onion was cut before flowering and then covered with the underlay and mulch. This method is cheap (in terms of materials) and favoured for sensitive bush areas. Some problems encountered by Mark were anglers lifting carpet for worms, exposing the site and the rubbish that came with carpet underlay itself.

The Shire of Eltham Has been conducting trials with Round Up and Brush Off applications. Both were applied at various rates, the most effective being Round Up at a rate of 1:100. This resulted in a 60% cover kill and although relatively successful it was noted that Round Up and Brush Off were detrimental to native grasses.

Trials conducted at Hughs Creek, Sassafras by Jenny Francis included a variety of methods and herbicides. The results were;

Method	% Cover of Angled Onion	Quantity used
Garlon	60	25ml:15lt + surfactant
Round Up*	70	1:30 + surfactant
Brush Off	70	10gm:100lt + surfactant
Hand Weeding	50	
Carpet	65	6 layers newspaper + carpet
Black plastic	65	complete cover of area

Results:

Garlon	some regrowth
Round Up	100% success
Brush Off	100% success
Hand Weeding	fairly successful
Carpet	20 months no bulbs
Black Plastic	20 months no bulbs

* Round Up at 1:100 was considered a bit low and 1.5:100 was suggested.

Tim Rowe (Doncaster /Templestowe Council, Parks and Garden) concluded the seminar by suggesting land managers should take a co-ordinated approach in controlling Angled Onion. Information should be shared so that we are all aware of the successful and failing techniques being used in the field.

Fay Valcanis
ParkCare Officer

Mystery Reporter

Boiled again.....!

Prospective interviewees are fleeing the Mystery Reporter's delicate probing, using sophisticated excuses such as "away at Healesville doing rural studies" (K.D.), "only at the Park on Mondays (J.H. M.D.) OR "got to rush, one of the kids is at home sick" (C.W.) Others are constantly on the move (B.P.), even the highly regarded C & M's are elusive due to Arbor Week keeping everyone busy.

Because of this the M.R. has decided to go PUBLIC! (When accosted one Saturday, barbecuing at Jumping Creek, the M.R. did agree to be interviewed by two rangers- namely Stephen Anderson and David Van Bockel.)

BUT....before this mind shattering event I will release, each month, two exciting clues to my identity.

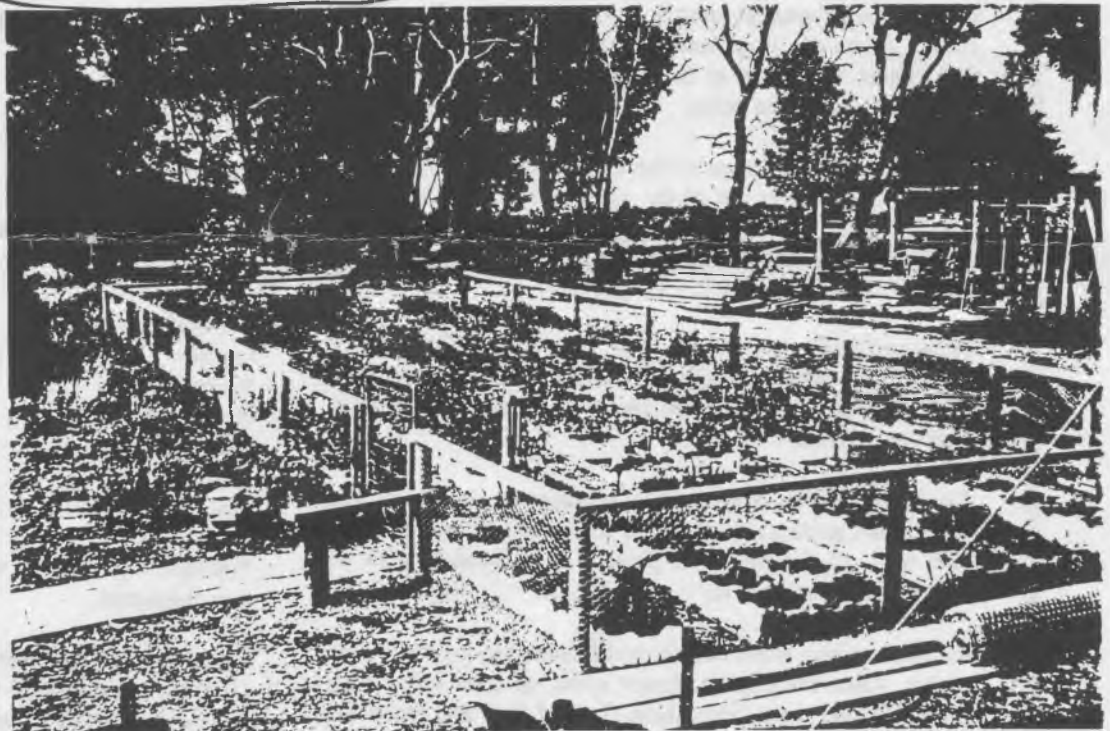
Clue One - Born at the Royal Womens Hospital, Melbourne.

Clue Two - I gained my school Leaving Certificate at a co-educational High School.

- SNIPPETS 1. Whilst investigating F.O.W.S.P. another organisation has been detected developing and establishing itself in an adjacent area. What is C.C.R.I.S.P? Who is Brad Curtis?
2. The M.R. flees Victoria next month.
3. By the time you read this the M.R. will have been "tortured", spending a day with a Four Wheel Drive Club. ALL WILL BE TOLD!
4. What does ISEN 0 646 11868 4 conceal(?) or reveal(?) about the true activities of F.O.W.S.P.

The new hardening-off area FULL, ready for the Arbor Week planting sessions. As this goes to print it is almost empty!

To all those who helped with the schools programme...Thankyou. Now we begin the process for the Spring plantings. Nursery activities never really slow down!



OSBORNE Rd

Osborne Road residents are all being asked to participate in setting up a Wildlife Habitat Corridor along the roadside verges. Ariel bundle cable wires have been installed so S.E.C. disturbance will now be minimal - we hope. A residents group organised and helped remove woody weeds....nearly wearing John Boyle (Chief Chainsaw). Glen Terry (Eltham Parks/Environment) arranged mulching these and when this reaches you the street will be transformed! Come and

Reflections by Pat Coupar



by
Pat Coupar



ANOTHER OUT OF WARRANDYTE EXPERIENCE

The weekend of February 20th and 21st was our only free weekend for months and as such we had planned a camping trip to the bush. Unfortunately it happened to coincide with the worst two days of weather for the whole summer. Temperatures had been in the high 30's all week. But in the early hours of Saturday, just before dawn, the weather broke with a dramatic thunderstorm and torrential rain. Despite the appalling forecast we were not deterred. The only concession made to the weather was to change our destination from the high mountains of the Southern Alps to the Barmah forest along the Murray River.

In relentless rain we headed north along the Hume Highway, windscreen wipers working overtime in the wake of giant multi-wheeled trucks. It was no surprise when we arrived at the mighty River Red Gum forest to find the campsite entirely deserted. Over lunch we watched the rain continue to fall. It was barely possible to see across the mist-mantled river to the other side.

A drive seemed the best option. Although the deluge had made some of the forest tracks dangerously slippery. After a while the rain began to ease to a drizzle finally stopping altogether.

On return to camp, despite the damp wood, we managed to get a fire going and sat around the friendly flames relishing the warmth. It was still unseasonably cold with a strong southerly wind bringing an Antarctic chill to the Barmah.

Our son Ross is not one for sitting around doing nothing. It wasn't long before he had stripped to his bathers and was swimming out across the river heading for New South Wales. He invited us to join him assuring us the water was "beautiful - like a warm bath". After some persuasion we agreed to accompany him. And in contrast with the ambient air temperature the water did indeed feel warm - rather like swimming in a heated pool. Getting out though was less pleasant!

Due to heavy rains, the river had flooded considerably during spring and early summer. As the water receded large billabongs were left behind. These swamps soon became home to a multitude of wetland plants. Delicate ferny milfoils fringed large floating mats of swamp lilies; deep pink azollas clustered together at one end where the water was shallowest. In boggy depressions beneath the River Reds the ground was carpeted with spreading bundles of Lesser Joyweed, their creamy-white flowers like tiny fluffy balls gathered around the stem. Huge clumps of bright green sedges flourished in the wet conditions, some with tall umbrella-like flower spikes.

The billabongs were teeming with life - rich pickings for the numerous birds that visited these wetlands. White-necked herons wandered stealthily watched from above by a pair of yellow spoonbills perched on a dead branch. Ibis, ducks and coots were frequent visitors also.

Our two days spent in the Barmah were a much-needed tonic for flagging spirits. The rain did not return and although it was never warm, the sun shone on a few occasions. Back in Warrandyte we discovered, the rain had continued all weekend.

FOOTNOTE

Since the construction of the Upper Yarra Dam, the river at Warrandyte no longer floods. Consequently we have few swamps or billabongs left. However it is good to know that many of the wetland plants we saw at the Barmah can still be found in parts of the Warrandyte State Park.

Fossicking Ross & Percy Pass

BIRDS

C	B	E	W	O	R	R	A	P	S
K	L	Y	R	E	B	I	R	O	P
N	O	R	E	H	A	O	R	T	O
F	C	O	C	K	A	T	O	O	O
Q	H	S	K	D	U	C	K	R	N
R	I	E	B	A	O	W	L	R	B
O	C	L	Y	I	B	I	S	A	I
B	K	L	P	E	M	U	X	P	L
I	E	A	G	L	E	D	R	L	L
N	N	E	R	W	O	R	G	A	Z

Kookubura

Cockatoo

Ibis

Rosella

Parrot

Emu

Spoonbill

Duck

Heron

Chicken

Eagle

Sparrow

Wren

Robin

Lyrebird

ANIMAL TRACKS

BEEBLE



EASTERN GREY KANGAROO



RAVEN



LARGE DOG OR DINGO



SNAKE



Running



COMMON WOMBAT
The wombat's hind foot resembles a small human footprint



COMMON BRUSHTAIL POSSUM



SHORT-BEAKED ECHIDNA



Hindfoot

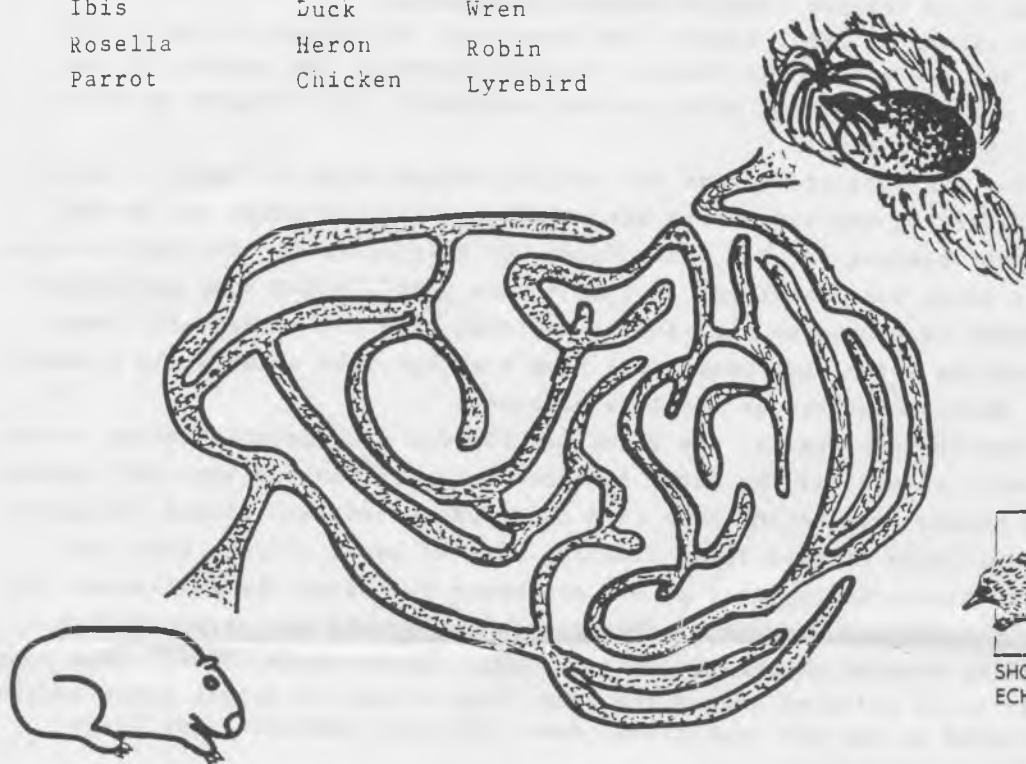
Frontfoot



KOALA



CAT



Please note that membership subscription has been increased to fifteen dollars(\$15) per annum. This is the first increase since 1987 and the Committee hopes it is well understood that postage rates are changing constantly..eventually our rate will become the general postage rate. Costs of publishing the newsletter have only been met because of the generous help of a member and his company. Any member having difficulty please contact Margaret Burke....844 1060

Sending out Subscription accounts is a very tedious chore for the volunteers who mail the Newsletter. We are working on some changes in procedures but early payment is greatly appreciated.

If you have a red asterisk on the mailing label it will mean your subscription is due. We would love to have as many subs in as early in the year as possible and arrangements for a pro-rata payment to take membership up until the end of 1994 could be worked out with Margaret Burke 844 1060.