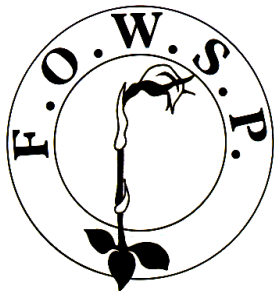


# Friends of Warrandyte State Park



## Newsletter

Website: [www.fowsp.org.au](http://www.fowsp.org.au)

Friends of Warrandyte State Park (FOWSP) Inc. PO Box 220 Warrandyte 3113

### Editors Corner

SPRING HAS BURST upon us with an explosion of colourful native blooms. Unfortunately this is also accompanied by an explosion of weeds and many are best spotted and attacked while in blossom. Photos on this page and pp 2 & 3 show how some FOWSPians helped a small group of Friends at Queenstown Cemetery in September.

Read about Joan Broadberry's exciting Kronosaurus encounter in Queensland on p. 4.

See what Kelly has to tell us about keeping "peas" at the nursery on p. 6

On page 8 & 9 you will see that I SPY has become I PHOTOGRAPH.

Importantly note information about our **30th Birthday Celebration** 18th November on page 8.



Jack, Thomas and Matthew with mum Tracey, wait while Kel prepares refreshments at Queenstown Cemetery. (above) FOWSPians help Friends of Queenstown Cemetery. Story p. 2 and see also I SPY

Jarrold advises on weed recognition at a Queenstown Cemetery grave site. (left and story p.2-3)  
Photos by Linda Rogan



Electronic bulletin recipients will find *Spring Collage* of photos on the final page. Thanks again to all who contribute to FOWSP and to this newsletter. Keep the good news coming in and be sure to get out to enjoy our beautiful bushland this spring. Linda

**Deadline for November edition newsletter is Friday 26th October, 2012**  
contributions can be emailed to Linda Rogan [lindarogan@netspace.net.au](mailto:lindarogan@netspace.net.au)  
or posted to PO Box 220, Warrandyte 3113



## Helping Friends at Queenstown Cemetery by Linda Rogan



The puzzling name of Queens- town is explained below:

*The name of present day Smiths Gully and St. Andrews was originally Queenstown, dating from the time of the Gold Rush to the Caledonian Diggings in 1854. The Rocky Hill above the Tent City, 'Market Square' of the miners and their claims for alluvial gold, by necessity be- came the site for the burial of young and old and miners from these early times and was even- tually gazetted in 1861 as Queenstown Cemetery Reserve.*

Jarrod Geddes, pictured left with Elizabeth Wykes, has re- cently become involved provid- ing expertise in weed manage- ment and preservation of valuable native flora of the extended cemetery reserve.

IT IS AMAZING what can be learned during FOWSP activities. On Thursday morning, 20th September, the workers from FOWSP included the youthful enthusiasts Jack, Thomas and Matthew and mother Tracey. (Photos p. 1) Under Kel's direction, all combined efforts with a small group of friends devoted to the Queenstown Cemetery.

Elizabeth Wykes, (photo above) from Friends and Relations of the Queenstown Cemetery, shared some of her knowledge of this historic cemetery. The first registered burial was from the Gold Rush years 1861. "Among the earliest (burials) are Chinese miners, many of whom are buried in unmarked and unrecorded graves." More information can be found on [http://www.wikinorthia.net.au/index.php/Queenstown Cemetery Trust](http://www.wikinorthia.net.au/index.php/Queenstown_Cemetery_Trust) and the St Andrews Newsletter July 2012 online.

Below left, he describes the technique of line weeding for thorough coverage where troublesome weeds such a freesias are hidden amongst native species. He believes that this area has too many valuable indigenous plants to risk spraying with herbicides. That leaves the option of digging the freesias out; attempting to secure the bulbs as well. He feels where the bulbs are missed with the first digging it is not worth further excavation. The plant will be weakened by the removal of flower and leaves. In any case weeding will need to be fol- lowed up in subsequent years as it is not possible to remove all bulbs and further seeds may be blown in.

*(Continued on page 3)*





(Continued from page 2)

A large patch of mainly weedy grasses were then removed from under a Cherry Ballart *Exocarpus cupressiformis*. Many of us noted that ground under Cherry Ballarts seems to favour weed growth..

After our mornings work, most of us walked to the top corner of the large block and observed the wonderful floral diversity. Waxlips, Leopard Orchids, Bird Orchids, Nodding Greenhoods and Tall Greenhoods (bottom right page 2) were found amongst the tufts of native grasses. Perhaps the most outstanding plant for me was the *Pomederris vacciniifolia*.



A serene last resting place surrounded by Round-leaved Pomederris (left) Close up of blooms (above) and leaves (below left)

Photos Linda Rogan

**Good News on *Pomederris vacciniifolia***

IT WOULD HAVE BEEN WORTH the trip to Queenstown Cemetery for the story of *Pomederris vacciniifolia* alone.

According to Elizabeth Wykes, a single plant of this Round-leaf Pomederris was noted in the early sur-

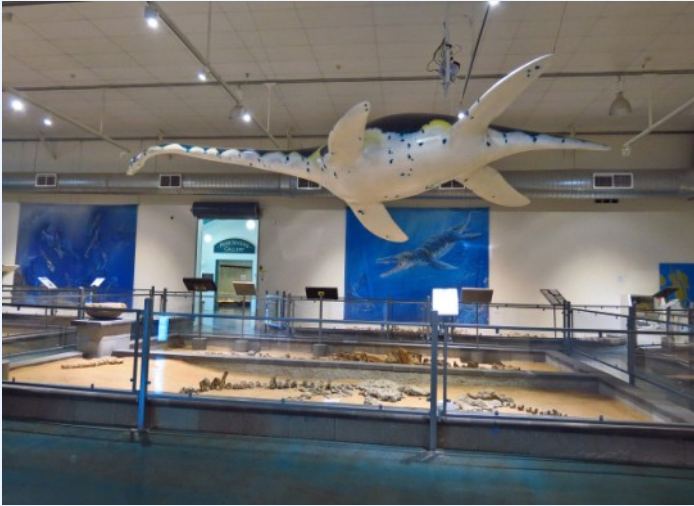
veys of native flora in the Cemetery. The value of it was not fully realised until Cam Beardsall confirmed that it is *Pomederris vacciniifolia*. This plant is endemic to Victoria and found only in the Yarra, Plenty and Yea River catchments. The wide spaces between known populations contribute to the species vulnerability. The presence of this single plant was very significant. Elizabeth felt she recognised the shrub from similar ones on her nearby property. Imagine the excitement when they were confirmed to be the same species.



Seedlings of *Pomederris vacciniifolia* have been propagated, including by FOWSP nursery and this has proven to be a successful garden plant. Best of all seedlings have appeared naturally around the mature plant at the cemetery as can be seen in the photo (above left). A close look at the emerging flowers (above right) reveals more of their delicate beauty. The small round leaves are shown (photo left)

There are many reasons to preserve the history and flora of the Queenstown Cemetery.

## Heard of Lark Quarry? - What about Kronosaurus Korner? Joan Broadberry



I HAVE BEEN to the little town of Richmond in western Queensland twice. On my first visit I absolutely failed it, and then almost blew my second chance as well. Luckily a shred of curiosity kicked in and Brian and I got to see one of the most amazing museums in Australia. A big call for a town of less than 600 people? Well you be the judge.

Richmond is situated about half way along what is known in the tourist world as the *Overlanders Way*. A great sweep of highway that stretches across the entire width of Queensland. The town lies 500k to the west of Townsville and 400k east of Mt. Isa between Julia Creek and Hughenden.

Significantly it is only 211 metres above sea level. About 120 million years ago sea levels were much higher and a large section of outback Queensland was covered by a vast inland sea stretching to the Gulf of Carpentaria. Richmond would have been at least 50 metres below the surface of that Cretaceous Sea. Therefore the fossils that are found prolifically in the area are the remains of marine animals such as turtles, ammonites, fish and marine dinosaurs. I hope you are paying attention, this is getting exciting. I just said dinosaurs.

My first visit to Richmond. was in 2008 while I was on an organised bird trip chasing various species of Grasswren. The town was just a pit-stop for our busload of crazed twitchers. Its signature structure, impossible to miss outside the visitors centre and cafe, was a rather kitsch model of a huge beast with enormous crocodile-like teeth and the odd name of Kronosaurus. Somehow I saw it as the usual Disneyish attempt to attract passing tourists. The ubiquitous giant 'whatever'..... I bought an ice-cream and sat in the shade until the bus was ready to leave. Fail! Nought out of ten.

My second visit was a few weeks ago. This time I was aware that Kronosaurus Korner contained a museum and I did enquire as to the entry price. It would be \$36 for the two of us and we hesitated. I took a quick peek inside the door at what looked like well organised exhibits and almost like flipping a coin we said, "Ok", paid up and went in.

About two hours later we emerged astounded at the quality and richness of the collection. Inside were beautifully displayed skeletons and models of the most stunning prehistoric marine creatures. Almost all have been found locally, some only in the last couple of years. This museum contains some of the best preserved fossils in Australia and dare I say it, the world. An audio guide was included in the admission, but was hardly necessary as the fossil bones were so skilfully laid out, often with wonderfully constructed, life-sized models representing the living creature. The walls were covered with paintings depicting their habitats and (likely) lifestyles, with plenty of informative written panels as well. Most of us who frequent museums have probably seen a good number of reconstructed land dinosaur skeletons, but these marine giants are unique.

It is hard to choose one highlight, but perhaps it was the Richmond Pliosaur (below right). This is short necked animal had four hydrofoil-shaped paddles which would have made it a fast and highly manoeuvrable swimmer. Its long, narrow snout was designed to catch fish, similar to a fresh water crocodile or dolphin. The rare skeleton is one of the best preserved in the world, found almost 100% complete and is one of the pearls of the museum.

As we headed back to the car I looked with new eyes at the model of the giant marine reptile outside. It was an accurate representation of *Kronosaurus queenslandicus* I snapped a photo.

On the 2008 twitchers trip mentioned above, almost everyone had heard of Lark Quarry the site of the famous fossilised footprints from an ancient dinosaur stampede. When we approached Winton, the bus voted to give up birding for half a day and detour to see the prints. They did not disappoint. But I assure you that the, perhaps poorly named, Kronosaurus Korner museum in Richmond can definitely hold its own with Lark Quarry.





**FOWSP COMMITTEE 2012**

**Jason Patton** 0402 121838  
jason@parau.com

**Webmaster  
& Membership**

**Lynda Gilbert** 9844 0106

**Treasurer**

**Linda Rogan** 9435 5806  
lindarogan@netspace.net.au

**Newsletter co-ordinator**

**Kelly Wooster** 9844 2819

**Social media contact;  
facebook**

**Artur Muchow** 0415 383328

**Secretary**

**Cathy Willis** 0418 142297

**Gray Ardern** 0418 190261

**Jan Falconer** 9844 1226

**Sybille Ims** 9844 1335 or 0405 500  
278 imsbs@netspace.net.au

**Market trailer**

**OTHER FOWSP CONTACTS**

**Nursery Manager** **Josh Revell**  
**Nursery Phone** 0408 317 327  
nursery@fowsp.org.au

**Park Office** 9844 2659

**Newsletter assist** **Joan Broadberry**  
9846 1218

**Wildlife Rescue** **Adriana Simmonds**  
9722 2908

**Koala Rescue** **Julie Pryor**  
9722 1117

**Librarian** **Judy Green**  
9844 2096

**Website:** www.fowsp.org.au

## Thursday Activity Group (TAG)

JOIN US on the first Thursday of the month from 9 am, (TAG workers only), to 12. 30 pm. Either meet at the depot, (sharp at 9:00 am for 9:15 start ), or on site by arrangement. LEARN some vegetation management skills and help improve some special sites in the Park. Just tag along with the Thursday Activity Group (TAG).

*Activities are cancelled on Total Fire ban Days*

**4th October** *Russell Rd area: general revegetation work* **Rating: Moderate**

**18th October** *One Tree Hill area: old fence removal* **Rating: Difficult some heavy lifting**

**1st November** *Koala count Pound Bend area* **Rating: Easy**

Contact the nursery on 0408 317 327 for more information regarding the Thursday Activity Groups.

## FOWSP/Manningham Thursday nature walks

**Leader: Cathy Willis**

Please wear appropriate clothing for the weather including a hat and sturdy footwear. Bring a water bottle and snack. Meet 9.30 am **at the venue**. Walks held on the 4<sup>th</sup> Thursday of each month

These walks are paced to allow us to appreciate the natural history along the way.

**Thursday 25 October**, 9.30 am Jumping Creek to Warrandyte Bridge Take a walk through the heart of the Warrandyte Gorge. **Distance:**2.5km **Time:** 2 hours

**Rating :**Difficult (some steep and narrow tracks) Note 4 km car shuttle will be required.

These walks are popular so book well ahead. **Bookings are essential:** 9840 9124  
or [eepadmin@manningham.vic.gov.au](mailto:eepadmin@manningham.vic.gov.au).

Newsletter team this month were: Linda Rogan, Joan Broadberry  
Line drawings are from Mel Coupar, originally drawn for articles by Pat Coupar.



## Why not give peas a chance?

Kel's Nursery Notes

NINETEEN SPECIES of the pea or Fabaceae family have been recorded in the Warrandyte State Park. We have some spectacular pea flowers coming out of the igloo soon. *See below.* The nursery is able to propagate other pea species on request although this may take time. Why not plant some spring flowers in your own backyard now.?



**Place your orders now for Golden-tip - *Goodia lotifolia*** – (photo above) an open shrub to 3m with soft grey foliage and attractive yellow pea flowers from Sep to Dec. Preferring full sun and well drained soil. Do not confuse this plant with the invasive environmental weed Cape Broom (*Genista monspessulana*). This may be a reason why this species had an 'Endangered' district status in 1999. It can be pruned back hard to gain a bushier plant if need be.

ALSO IN the nursery soon is the **Austral Indigo - *Indigofera australis*** –(photo right) an open erect shrub to 2m with grey fern-like foliage, this time with beautiful pink/purple pea flowers from Sep to Dec. Liking full sun to semi sunny positions with well drained/dry soils it will definitely brighten up that corner of the garden. Can also be pruned hard after flowering for a more shapely figure. This plant was declared rare in the district in 1999.



## News from the Committee

### Redesign of the Nursery.

The new office building is currently being built at Holmsglen TAFE. The new greenhouse tables are in and a watering system is being installed. Once this is done the demolition of the original green house will go ahead to make way for the delivery of the new building.

### Night Stalk

A night stalk will take place at Pound Bend on Oct 5 following a barbeque. More information p.6.

### Nursery news

Sales have been very good recently, but there has been less propagation. There have been fewer members present on Thursday mornings and not so many people have been attending TAGs over the winter weeks.

### 30<sup>th</sup> Anniversary

Plans are well underway for FOWSP's 30<sup>th</sup> birthday celebrations. More information p.8.

## Nursery Report

**Plant sales** have been good but propagation will be slowing down for seasonal reasons

**New igloo** in place will allow a lot of propagation over summer

**ANZ planting rescheduled** to 27th September - more help will be needed from FOWSP

**Manningham employee** is available to assist with TAGs/ WAGs if needed

## Rangers Report Note:

**Whipstick Gully poppet head** structure is expected to be removed by early October for safety reasons.

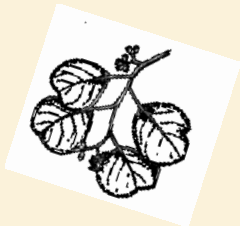
### Next Committee Meeting

**Date:** October 9th, 2012

**Venue:** Ranger Station, Pound Bend

**Time:** 19:30 pm sharp

## FOWSP MARKET TRAILER



Thanks to those who helped out on 1st September  
John and Diane Baird, kindly opening the trailer  
Jan Davies, Peta Cumming and Sybille Ims,  
Lyndy Gilbert and Ken Crooks kindly locking up again  
Trailer delivery and retrieval: Peter Curry

The Warrandyte market is held on the first Saturday morning of the month from 8.30 am to 12.30 pm at Stiggants Reserve. Volunteers are rostered in pairs to man/woman) the FOWSP information trailer for just one hour. If you are interested in being on the market roster please contact **Sybille Ims 9844 1335/0405 500 278**

**imsbs@netspace.net.au**

*First timers are always paired with someone more experienced.*

**Future market dates are:** Saturday October 6th, November 3rd.







## “I SPY”

By B.G



**HEAPS OF HELPERS**  
Visiting the nursery were Eva (22months) helping her mother Erin to select special plants. (photo right)



**BREEDING BOXES**  
Jack (6 y.o. and plays the cello) was helping mum, Tracey build breeding boxes for phascogales. Also there were his two older brothers (Matthew 9 y.o. who plays the violin and piano) and Thomas (11 y.o. who plays the trombone and piano) The whole family follows Collingwood! (photo of this family at Queenstown Cemetery p. 1)

### CERES CERTIFICATE

Kelli G was helping, “because I love plants”. Kelli has an arts degree, “majored in Philosophy at Monash”. She has just finished a permaculture design certificate at CERES.

### A DEGREE OF ACTIVITY

David B was quietly “helping as a volunteer and also collecting specimens” (which explained the tiny twig cutting he was carefully holding)

### THE KELLY CONNECTION



Leading Senior Constable Sean Henderson and Leading Senior Constable Ross Timms came to the Park depot “on a social visit and also wanting a few native trees to plant in the front gardens of the local station. Both are from Warrandyte (photo above)  
We must be an honest lot in FOWSP as none of our

members vanished into the bush to hide or looked furtive. But I SPY discovered that nursery worker and committee member Kelly Wooster, many years ago, used to graze her horse near the old police station which was “used by the mounted police” The horse was named “Whistler—out of Tomahawk the Whistler”

### MYSTERIOUS MEL

Who is this Mel Coupar who regularly does line drawings in our newsletter? And what is her connection to Ross? More in the future.

### RECALLING CANDLEBARK

Debbie Shaw who used to manage the Candlebark Community Indigenous Nursery in Croydon is now a Senior Biodiversity Office with the DSE at Traralgon.

### WORKING WEEDING

*DATE:* Early morning on the 6th of September 2012

*THE SKY:* Cloudy and threatening

*THE PLACE:* Hochkins Ridge Flora Reserve 36K6

*THE PEOPLE:* Janaya O’Dempsey, ranger, Jackson, Danielle and Sarah all doing work experience for their 2nd year (final) of the Diploma of Conservation and Land Management at Swinburne TAFE, plus Ranger Bernie Van Lith. The three students have attended every Thursday since June.

*ACTIVITIES:* Included “weeding” and elimination of plants such as Sweet Pittosporum, Sallow, Cootamundra, and Cedar Wattles, cotoneaster, blackberries, honeysuckle and various other plants “out of place”. Offending trees were cut 5 cm from the ground and “dabbed” with weed killer on the flat top of the stem left.

Also seen was a blue tongue lizard and a fox scat was collected for further examination.

Janaya also discussed the topic of safety precautions when wind damage may cause dangerous situations. See Ben’s photos p. 8.

### BERNIE’S BADGES

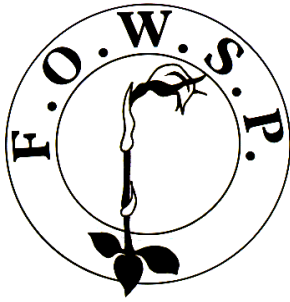
Ranger Bernie Van Lith was wearing a bar, bright yellow and blue vertical stripe indicating many years of fire fighting service—also a “green service” badge given after 30 years of service. He actually has 33 years of service.

### FINE FRIEND

Betty Oke has passed away at the age of 93.

She had been a member of FOWSP and used to organise the friends market roster. Betty had always been an activist for the benefit of any community in which she was involved.

To the end, she kept her sense of humour and her concerns for the welfare of people and the planet. A life well spent.



Print  
Post  
346802/0005

Postage  
Paid  
Australia

**REGISTRATION BY AUSTRALIA POST  
PP 346802 / 0005**

If undeliverable please return to  
Friends of Warrandyte State Park Inc.  
P.O. Box 220 **Warrandyte, 3113**



**Common Beard Heath *Leucopogon virgatus* var. *virgatus***

Intrigued by the tiny and exquisite flowers on this common heath plant each spring, I have difficulty remembering its scientific name. I now know that Leuco = white; pogon = beard; virgatus = made of twigs and hope this information will "twig" my memory. Blooms may be seen from July through December and it is widespread in grassy open forest in WSP

*Linda*

**October 2012 Vol 30 no. 8**

**PLEASE CHECK YOUR ADDRESS LABEL TO SEE IF YOUR SUBSCRIPTION IS DUE**

**FOWSP Membership Renewal Form**

Name .....

Address .....

.....

Telephone no. .... Email .....

Membership (family) \$30 (from 1 September 2011) Newsletter by email  (tick box)  
Concession \$10

Send to: FOWSP PO Box 220, Warrandyte 3113 or renew on the website [www.fowsp.org.au](http://www.fowsp.org.au) with the option of direct deposit payment.

*This newsletter is printed on recycled paper*



**Email photo bonus**



Your photos can appear on this page (subject to space available) if you email them as follows:  
[lindarogan@netspace.net.au](mailto:lindarogan@netspace.net.au)

### Key for Spring Collage 2012

*Tetratheca ciliate* Ironbark Road Reserve

Painted Lady butterfly Glynn's Reserve

Leaf Beetles at Glynn's Reserve

Recently hatched caterpillars of the Imperial Blue Butterfly on Silver Wattle and attended by ants.

Goodenia species

Not determined small brown beetles

Three Acacia leaf beetles  
Calomela species