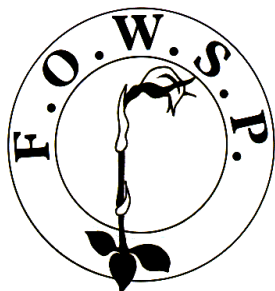


Friends of Warrandyte State Park



Newsletter

Website: www.fowsp.org.au

Friends of Warrandyte State Park (FOWSP) Inc. PO Box 220 Warrandyte 3113
ABN 94170156655/Incorporation No. A0024890C

Editors Corner

SPRING ALWAYS brings a flurry of activity around FOWSP. This year is no exception.

As always there are the birthdays where the lovely cakes always draw a smile or two (see Kay and cake on the right and Kelvin p.9).

A lot has been happening in Frogland see pages 2 and 3. Also puzzle over an echidna encounter on p. 3.

Read how TAGS are helping to bring about the return of some of our rare ancient gum trees in a faunal corridor on p. 4.

See what's up with the market trailer on p. 6 and let us know what you can do to help. While you are there, catch a smile from Sarah, returned from her travels.

Lyndy reports that schoolchildren are also helping to return some of the rare plants to the Kinglake area on p.8. Also see what insects the lovely spring weather has brought out and don't be surprised if many of them are bees, even more have been flies, especially the attractive hover flies that some take for bees. See email extras.

Lindy also suggests a pleasant day trip to a Yarra Glen garden on p. 9.

And we hope you can join us for our AGM and perhaps a tour of Frogland on 22nd November as below.

Linda



☆☆

☆☆ **Notice to all FOWSP members: The AGM will be held on Sunday 22nd November at 5:00pm.** ☆☆

☆☆ **The special resolution for vote that is listed on p. 3 of the October Newsletter.** ☆☆

☆☆ **This will be followed immediately by BYO drinks and nibbles and then a BBQ** ☆☆

☆☆ **BYO Drinks and meat** ☆☆

☆☆ **Salad and Christmas dessert will be provided** ☆☆

☆☆ **Tours of Frogland with its new pathway and Botanical Signs will be on offer. This is not to be** ☆☆

☆☆ **missed if you haven't seen Frogland in the past year. Frogland features on p.2-3 in this issue.** ☆☆

☆☆

Deadline for December 2015 edition newsletter is
Friday 27th November 2015
 contributions can be emailed to Linda Rogan editor@fowsp.org.au
 or posted to PO Box 220, Warrandyte 3113

Frogland's amazing transformation

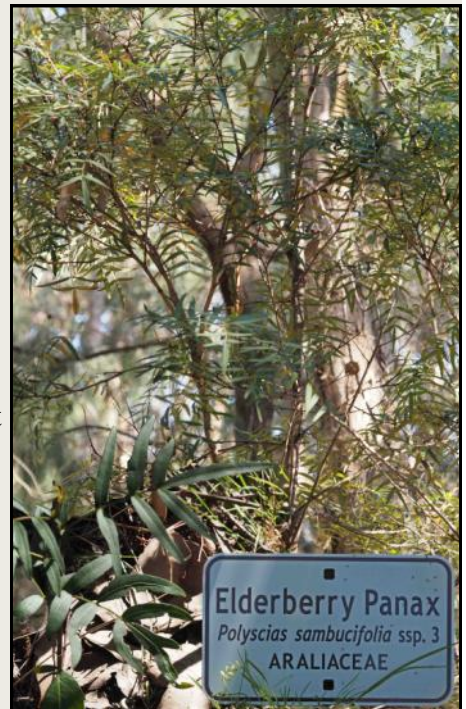
FROGLAND FIRST APPEARS in FOWSP newsletters in 1992. At this time Pat Coupar said, "it was the perfect site for a wetland - storm water drainage with the addition of run off from the nursery watering system, had created an excessively wet and boggy area near the W.S.P depot. The wetland which has since been christened 'Frogland' A small dam was bulldozed about 3 months ago (great work Craig). Its banks were moulded (well done Riddell brothers) and a narrow overflow trench dug, which channelled the excess water into depressions scraped out below the dam. On recommendation from one of the Rangers (thanks Doug), clean straw was added to the water. The straw gradually sunk over two weeks and started to rot providing aquatic organisms with a source of food, substrate and protection, thereby facilitating new food chains. Huge hollow logs were transported and placed in and around the dam, a much appreciated joint effort by Park staff (thanks David et al). Carpet underlay was spread on the banks of the dam and over most of the weeds (mainly introduced grasses), below the dam. Seeds of native grasses and sedges were scattered on top of the underlay. Would the frogs like this habitat we were creating for them? Was the quality of the water good enough? Had we provided the right conditions? The answer to all these questions was yes. My discovery of a pair of breeding frogs (yes actually doing it!) in the small dam, is something I am unlikely to live down."



Twenty-three years later, after replacing the deteriorated boardwalk with a much expanded wood chip mulch pathway, Frogland has come a long way. A new addition is the placement of clear botanical signs kindly funded by a Manningham

Grant for Community Education. Special thanks are due to Cathy who carefully listed the plant names and families for the signs.

I am particularly grateful to have the names so clearly marked where I have great difficulty remembering the names of many of the plants. Elderberry Panax (right) and Prickfoot (below) are prime examples.



(Continued from page 2)

The Hop Goodenia signage reminds me that on a Thursday morning, a lady who has recently moved into War-randyte, asked "Is this a native or an exotic?" The photo on her phone was of Hop Goodenia *Goodenia ovata*. It may be helpful to such people as well as FOWSPians to take a stroll through Frogland and become more familiar with some of our local and near local plants and their names.

But that is not all that is happening in Frogland. With grazing of plants becoming an increasing concern and grazing animals now including deer, Ranger Bernie, has come to the rescue. He is erecting poles to extend the height of the existing fence and our skilled FOWSP crew has been adding the chicken wire mesh to complete the job. One side is completed already.

It was a pleasure, after recent rains, to hear at least 2 different frog species calling in Frogland. *Linda*



Above: Supervisors, Right and below the rest of the fencing crew. Photos Linda



Photographer Jason says, " A FOWSP member went a little loco recently, when she got mauled by an echidna named Rex - oh, the humanity!".

I think Jason has been watching too many 1980s television ads. Here Rex is shyly hiding his/her face but I am informed it follow Peta like a puppy. Ed.

Tikalara TAG September 2015 Joy Hick



The three hundred year old Blakely's Red Gum photo Joy Hick

TIKALARA PARK, Templestowe, was the location for a Spring planting, between the Mullum Mullum Creek and the Main Yarra Trail.

A willing band of FOWSP members, plus Parks staff Cam and Bernie, were able to add to the previous week's planting by the Friends of Yarra Valley Parks. We believe that this is the first time that both volunteer groups have combined their energies, to plant in the same area. On this day, 180 tubes were planted.

The area planted out had most likely been cleared for an orchard during the 1860s, post the gold rush. A few fruit trees remain uphill from the Main Yarra Trail, close to Petty's Orchard. Fortunately, one Blakely's Red Gum (photo left) survived the clearing and seed from this 300 year old tree, was collected by Cam and grown on by the Friends group.

The Spring 2015 plantings are in addition to a FYVP planting some 16 years ago, closer to the Mullum Mullum Creek, and will strengthen the fauna corridor.

The planting included:

- Eucalyptus yarraensis* (Yarra Gum)
- Eucalyptus blakelyi* (Blakely's Red Gum)
- Leptospermum scoparium* (Black Tea-tree or Manuka)
- Bursaria spinosa* ssp. *spinosa* (Sweet Bursaria)

The Yarra Gum is considered a rare species for Victoria. Only one is left along this Yarra corridor and is located on Parks Vic land, near Petty's Orchard. The next Yarra Gum is located upstream at Wonga Park. The planting will help to fill in the gap between Templestowe and Wonga Park. Yarra Gum seed was collected from Coldstream, near the Melba Highway and Wonga Park, to grow the seedlings at the Parks Victoria Westerfolds nursery.



Recreating a fauna corridor in this weedy Tikalara area photo Carol Page

TAGS (Thursday activity groups)

TAGS meet at the nursery at 9.00 am for a 9.15 pm departure. . Please remember to wear appropriate footwear and clothing for the weather, and please bring your own filled water bottle. Contact number: 0408 317 327
Difficulty ratings:

Thurs.	12th Nov	9am-12 noon	Petty's wetland	Planting and weeding	FOWSP	easy
Thurs	26th Nov	9am-12 noon	Gold Memorial Rd car park	Woody weeding with ACCA	FOWSP	Difficult
Thurs	10th Dec	9am-12 noon	Pound Bend	weeding	FOWSP	easy

Easy: Even terrain, some light lifting, kneeling and bending involved. Few tripping hazards.

Moderate: Uneven terrain, light to heavy lifting, kneeling and bending involved. Tripping hazards present.

Difficult: Steep terrain, light to heavy lifting, working in over-grown areas and lots of bending. Many tripping hazards and slippery surfaces present.

Check the website for any changes at <http://fowsp.org.au/activities.php>

Please note TAGS and activities will be cancelled on Total Fire Ban days or when weather conditions are deemed hazardous.

FOWSP COMMITTEE 2014			OTHER FOWSP CONTACTS	
Artur Muchow	0415 383328	Secretary	<u>Nursery Manager</u>	Josh Revell
			<u>Nursery Phone</u>	0408 317 327
				nursery@fowsp.org.au
			<u>Park Office</u>	9844 2659
Linda Rogan	9435 5806	Newsletter editor	<u>Newsletter assist</u>	Joan Broadberry
editor@fowsp.org.au				9846 1218
Jason Patton	mobile 0402 121838	Webmaster and membership	<u>Wildlife Rescue</u>	Adriana Simmonds
	jason@parau.com			9722 2908
Cathy Willis	0427 660 651		<u>Koala Rescue</u>	Julie Pryor
				0417587798
Gray Ardern	0418 190261	Acting Treasurer	<u>Librarian</u>	Judy Green
				9844 2096
Caitriona Young	9844 2842	Minute Secretary	<u>Market Trailer</u>	Caitriona Young
			9844 2842/0411478410	
			<i>thefouryoungones@yahoo.co.uk</i>	
John Blake	0418 329 937		Facebook Coordinator	Annette Lion
			0414-249-729	
Kelvin Watkins	0488 039 774			
			Website: www.fowsp.org.au	

The views and opinions expressed in this publication are those of the authors, and do not necessarily reflect those of FOWSP

Newsletter Team this month: Linda Rogan,
Peter Rogan, Mel Coupar (Line drawings)

Next Committee Meeting

Date: Tuesday 10th November

Venue: Ranger Station, Pound Bend

Time: 19:30 pm sharp

Manningham City Council Environment Seminars

The Environmental Seminars are held on the first Wednesday of the month.

Many of the seminars will be complemented with field sessions to facilitate broader education on the topics. No bookings are required for the evening talks; however, RSVPs must be provided for the field sessions. Due to popularity of the field trips, bookings are limited to 3 field trips per person. Bookings open now. You must attend the corresponding seminar to keep your field trip booking.

Venue: Bull and Bush Room at the Grand Hotel, Warrandyte

Time: 7.30 pm

Enquiries: For more information or bookings please phone Lyn Meredith on 9840 9326.

No seminar in November.

Wednesday 2nd December A Half Century of Observation over 100 Acres Reserve presented by Murray Bouchier

Naturalist Murray Bouchier has been keeping birdlife records of the 100 Acres Reserve and Park Orchards for 55 years. In that time many changes have been observed and recorded. Murray will discuss the sighted changes in vegetation composition and share his observations of faunal and avifaunal species diversity as a result of these changes. Murray is a dedicated and experienced naturalist with membership to the Bird Observers Club of Australia, the Victorian Ornithological Research Group and member of the 100 Acres and French Island National Park friends groups.

Download the schedule through **March 2016** on <http://www.manningham.vic.gov.au/walks-and-seminars> or pick up a copy at the FOWSP nursery.



FOWSP THURSDAY PROGRAM

We meet for propagation and other nursery activities every Thursday morning at 9.30 am at the Warrandyte State Park depot, Pound Bend Road, Warrandyte (Melway 23 C10), unless otherwise stated below. Propagation takes place from 9.30 am to 12.30 midday.

No prior experience necessary -

There is always someone available to show you the ropes.

NURSERY OPENING HOURS

The nursery is open for plant sales every Thursday.

9.30 am to 12.30 pm and

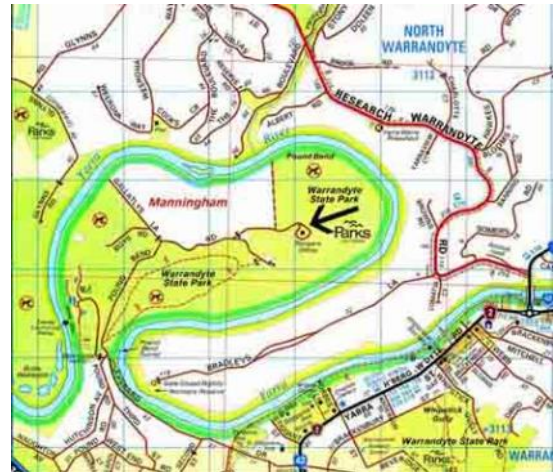
the first Saturday of every month, 9am to 1pm (to coincide with the Warrandyte Market) and the first Sunday of each month

2 pm to 4 pm.

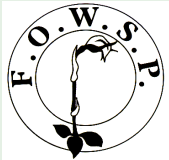
**Open Thursday the 24th of December
Then closed through Christmas and New Years
reopening on Thursday the 7th of January 2016**

Also closed to customers and volunteers on days of severe weather and on Total Fire Ban Days

Prices: Members \$2.00 Non-members \$2.50



Copyright 2008 Melway Publishing Pty Ltd
Reproduced from Melway Edition 36 with permission



FOWSP/Manningham Thursday nature walks

Leader: Cathy Willis



Each walk is paced to allow participants to enjoy and appreciate the natural beauty of the area. Please wear appropriate clothing for the weather including a hat and sturdy footwear. Bring a water bottle and snack. All distances and finishing times are approximate.

Bookings are essential as places are limited. Bookings open 2 months before the walk date. Meeting points will be provided at the time of booking, to book call 9840 9124 or email

eeadmin@manningham.vic.gov.au

9:30 am Thursday 26th November 2015 Pound Bend - Grasses Do grasses all look the same to you? Come on a short walk to learn how to distinguish between grasses, sedges and rushes, and how to recognise some of the more common local grasses. **Distance:** 2 km **Time:** 3 hrs **Rating:** Easy to Moderate

Watch for the 2016 walks schedule by the end of the year: on <http://www.manningham.vic.gov.au/nature-walks>

Ratings:

Easy – Flat or undulating well formed tracks/paths with low tripping hazards.

Moderate – May include some moderately steep or narrow sections or have higher tripping hazards.

Difficult – Includes steep and/or narrow sections, slippery sections, or high tripping hazards.

Thank you to Caitriona

Caitriona (right) has been helping Jan Falconer with the organising of the trailer over the past few years. Sadly her schedule next year will not allow her to continue ongoing.



Caitriona says:

“Organising the trailer is a creative endeavour. We set the trailer up to provide information about Warrandyte and also to sell plants. Plants are set aside for this purpose. Thinking about, and implementing, how to appeal to browsers and buyers is fun. We also work closely with staff from the nursery. I have learned a lot about the nursery stock and also how the nursery operates.

Working on the trailer means working with FOWSP members whom you would not usually meet. It is exciting to work on a venture such as this in cooperation with others. Meeting the public at the market can also be very stimulating. Also exciting to see first hand how a market operates and to get to know other market stall holders.”

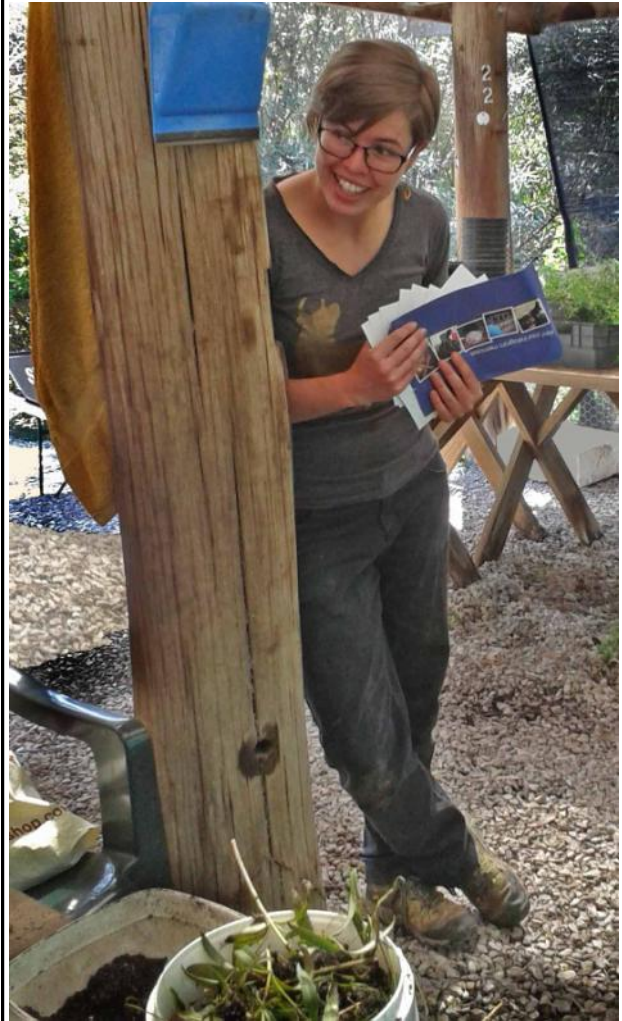
We are looking for a replacement to assist Jan who will also be away from time to time. If you can help out, with the organising please contact Jan Falconer as below

Jan Falconer 0419 872 096 email janece5@bigpond.com



More Smiles

Sarah is back with tales of her travels in Africa and elsewhere. We hope to see her on Thursdays when she's free.



FOWSP MARKET TRAILER

Thanks to those who helped out on Saturday **October market trailer roster.** The following people helped out with the market trailer on October 3rd.



Trailer transport: John Young
 Volunteers: Diane and John Baird, Jeff Cranston, Tony Oliver, Sybille Ims, Lyndy Gilbert, Ken Crook.

The Warrandyte market is held on the first Saturday morning of the month from 8.30 am to 12.30 pm at Stiggants Reserve. Volunteers are rostered in pairs to (man/woman) the FOWSP information trailer for just one hour.

If you are interested in being on the market roster for 2016 please contact **Jan Falconer 0419 872 096** email janece5@bigpond.com
First timers are always paired with someone more experienced.

Future market dates are: *Saturday December 5th, February 6th 2016*

Children are saving Critically Endangered Plants!

Kinglake Primary School children and the Upper Goulburn Landcare Network have together planted 50 critically endangered plants at the Kinglake Wilderness Trail Reserve. Seeds from the rare Round-leaf Pomaderris were collected in Kinglake and given to the Melbourne Herbarium to grow and then were planted out in Kinglake. Many understory plants were planted in the reserve to create a habitat for the Long-nosed Bandicoots that live there. Students and parents are continuing their work to maintain the reserve.

Reference: p15 Mountain Monthly Oct 2015

Thank you to Lyndy for providing this information. Photo right is from the Flora of Warrandyte and the signage below is one of the new signs at Frogland that will help us all learn which plant is the Round-leaf Pomaderris. Ed.



Spring brings welcome insects



TO JOY'S GARDEN:

"I have planted out a new butterfly garden and have several Australian Painted Lady butterflies (upper left). They mostly frequent the everlasting daisies, which, on researching Wikipedia, is a main food source."



TO SHARON MASON (middle left) working at Pound Bend deadheading Ixias: Sharon states she has seen these little black bees each year as she has been removing the flowerheads of the Ixias to avoid seed set. Linda was able to identify them as *Lasioglossum lanarium* (bottom left) which was confirmed on BowerBird.

TO THE DIANELLAS at the nursery: Three bee species I was able to photograph for identification on 15th October:

Lipotriches flavoviridis (back cover) about 6-7 mm long

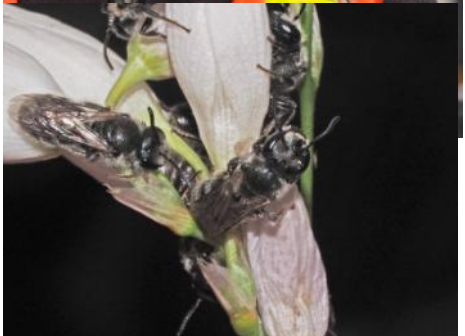
Lipotriches australica (2 photos below) also called the Green and gold nomia bee.

This bee is the largest at about 10mm long.

Lasioglossum hemichalceum (right) the smallest of the three at about 5mm.

I need a good photo that I can enlarge before I can see many of the characteristics needed for an identification.

Linda



Alowyn Gardens, 1210 Melba Highway, Yarra Glen

Lyndy Gilbert



Photos: Wisteria Arch from Mountain Monthly and Lavender pathway from ethical bride.com

IF YOU HAVE A SPARE HALF DAY, I highly recommend that you visit Alowyn Gardens in Yarra Glen. During our tour of the Gardens, we were lucky enough to meet one of the owners, Prue Van de Linde, who explained to us that the acreage was once a neglected horse stud, purchased in 1997. About \$1.5 million has been spent to date to carry out a vision for Alowyn and its progress has been recorded with pictures and explanations for interested visitors to read.

The formal area is built along 17th century design principles that lead you through a series of small individual courtyards and garden spaces. Through all of this runs a 100 metre, wisteria and rose covered, arbour. There are 5 clearly defined areas within the gardens: a perennial border designed for Spring and Autumn, a silver birch forest consisting of about 500 trees, an edible garden of generous proportions with avenues of fruit trees, a berry garden, beds of organic vegetables, flowers and herbs.

The Maple Courtyard provides Devonshire teas, coffee, locally baked cakes and seasonal organic produce. There is also a plant nursery which has a sales area.

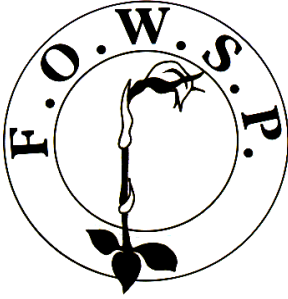
In 2008 the garden was named ABC Garden of the Year and the 2013 RACV Tourism award. As you meander through the 4 acres of visual and sensory delight, it's hard to believe it was once a barren horse paddock.

The Gardens are open 10-5 every day except public holidays and the month of July. Entry fees are \$8.50 concession, \$10 adults.

Reference: p12 Mountain Monthly Oct 2015



Kelvin (second from the left) prepares to blow out candles on another magnificent teatime cake to celebrate his birthday in October. Photo Jason



Print
Post
346802/0005

Postage
Paid
Australia

**REGISTRATION BY AUSTRALIA POST
PP 346802 / 0005**

If undeliverable please return to
Friends of Warrandyte State Park Inc.
P.O. Box 220 **Warrandyte, 3113**



Lipotriches flavoviridis

This bee is one of the species previously known as *Nomia* bees. It was seen buzz-pollinating this *Dianella* flower at the nursery in October. This process, also called sonication, is the way some of our native bees force the anthers to release their pollen. This must occur before pollination can be completed. Honey bees are not skilled at buzz-pollination. Garden plants that need buzz-pollination include tomatoes.

This bee's species name refers to its shiny yellow/green colour.

November 2015 Vol.33 no. 9

PLEASE CHECK YOUR ADDRESS LABEL TO SEE IF YOUR SUBSCRIPTION IS DUE

FOWSP Membership Renewal Form

Name

Address

.....

Telephone no. Email

Membership (family) \$30
Concession \$15

Newsletter by email (tick box)

Send to: FOWSP PO Box 220, Warrandyte 3113 or renew on the website www.fowsp.org.au with the option of direct deposit payment.

This newsletter is printed on recycled paper

Email photo bonus page

Who lives in Linda's native bee garden?



Clockwise from upper left: A Syrphidae hover-fly in the genus *Ceriana*, all of which mimic wasps; Yellow Admiral butterfly; a diurnal native cockroach; a colourful fly that may be one of the greenbottle group.



Velleia paradoxa with *Lasioglossum* bee on left and without on the right where the central floral structures trick my eye into thinking there is still a tiny bee there.

**Your photos can appear on this page (subject to space available) if you email them as follows:
lindarogan@netspace.net.au**