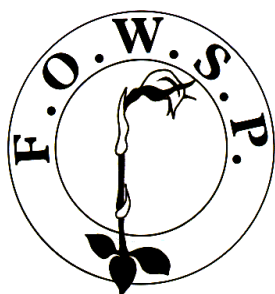


# Friends of Warrandyte State Park



## Newsletter

Website: [www.fowsp.org.au](http://www.fowsp.org.au)

Friends of Warrandyte State Park (FOWSP) Inc. PO Box 220 Warrandyte 3113  
ABN 94170156655/Incorporation No. A0024890C

### Editors Corner

MARCH HAS BEEN more like summer than Autumn with just enough rainfall to start the first of the autumn orchid leaves peeking out here and there. This season we are attempting to re-introduce greenhoods and *Drosera* into Frogland and the very first leaf has appeared there. It is hoped that the higher fence will keep the grazers out but a watchful eye will be needed.

The FOWSP market trailer was ready to show its fresh face at the Warrandyte Festival. We hope to hear more about the Festival soon. First report is that it was successful so thanks to all who put in so much effort.

Nearly every Thursday morning our intrepid TAG team heads out to work on improving some important area of the park, under the direction of Rangers Janaya, Cam and others. Lee and Graham have put together some words to tell us about some of the work being done and the history of the area known as Petty's Orchard on page 2.

Annette has begun what we hope will be a monthly report from the nursery featuring a Plant of the Month that is currently available for sale. Don't miss this on page 3.

Wonderful screens featuring FOWSP have been created for us by Ray Rankin. Many thanks Ray. For a glimpse of one see page 4. Even better watch for them to be shown soon at Clinton's IGA.

Some of our youngest FOWSPians have been helping out on p. 7 and past committee member paid a visit.

Join a Frog or rather Toadlet hunt on page 8. See our gorgeous newly painted trailer on page 9.

Enjoy this newsletter but take some time to think about what you can contribute to the May newsletter. I am waiting to hear from you.



What a wonderful conversion from shabby to absolutely beautiful. Thanks to Carolyn and her helpers Caitriona, John, Kelvin and others.  
See end result p. 9

*Linda*

**Deadline for April edition newsletter is  
Friday **March 24th 2017****

contributions can be emailed to [Linda Rogan editor@fowsp.org.au](mailto:Linda.Rogan@fowsp.org.au)  
or posted to PO Box 220, Warrandyte 3113

**Petty's Orchard site and FOWSP TAG teams by Lee and Graham Deacon**

THE WURUNDJERI tribes utilised the river flats and confluence of the Mullum Mullum creek and Birrarung (the Yarra) in all aspects of daily life both before and after European settlement. In the late 1830's, Major Charles Newman (1783-c.1865) was the first European settler in the area. He built his first home "Pontville" which still stands near the junction of the Yarra and Mullum Mullum Creek. His second home "Monckton" was built on adjoining land and was demolished in 1968. The current Petty's orchard was a trotting track for Mayor Newman's' Welsh ponies.

Tom Petty was born in England and came to Australia in 1853. Tom, an orchardist, invented the motor driven spray in 1890's, and with Daniel Harvey invented the "Petty Disc Plough" which was patented in 1914. His son Henry Petty (1876-1955) bought 2 blocks of land (about 14 acres each) in 1910. The orchard was owned and run by 3 generations of Petty's until purchased by Parks Victoria in 1981. And currently twenty-five hectares is privately leased to a commercial operator.

Petty's wetlands were first created in 1983/4 by the Staff of MMBW/Melbourne Parks & Waterways and the Friends of Yarra Valley Parks. Much work has been done over many years – earlier plantings used weed mat which is still present today. Thanks to FOWSP, Janaya & other rangers such as Cam, a lot of cleaning up and planting has been achieved in the last couple of years . Escapae ornamental fruit trees, Hawthorn bushes and blackberries and other woody weeds have been removed, and work still continues. *Acacia decurrens* (weed species) was planted during the early years of wetland establishment. A small stand is being utilised as feed for the elephants, giraffes & primates at Melbourne Zoo whilst others either with poor form or outside the select site area, are now being removed.



Bruce tackles the woody weeds. Photo Janaya



David tidies up the plant guards.  
Photo Janaya

Plantings from last year have survived rabbits, kangaroos and the weather, and probably about 70% are growing well. Regular repair of the stakes and guards continues as the kangaroo population is quite healthy. The local mob like to lean against some of the stakes & guards. Last week a kangaroo skeleton was discovered with many fox scats present. In week two of



Robin and Kelvin inspect the work area. Photo Janaya

**Plant of the Month from FOWSP nursery**

After a long, warm summer the nursery will be opening its gates again on market days - the first Saturday of the month with the new hours of 9-2! Please note we are no longer opening on Sundays.

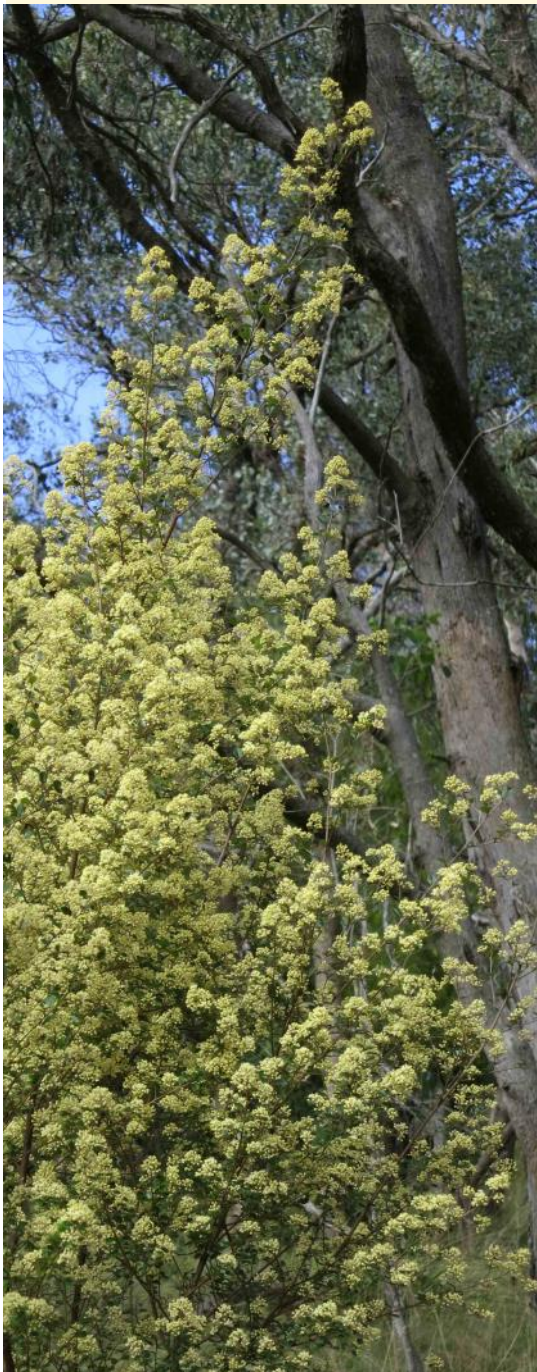
It's business as usual each and every Thursday 9.30-12.30.

We have been propagating many different species and currently have over 80 in stock. One being a special rare plant.....keep reading to find out which one.

I'd like to introduce *Pomaderris vacciniifolia* or Round-leaf Pomaderris.



The round leaf that gives *P. vacciniifolia* its common name.



As a large shrub growing to around 3-4m, it likes a regular water until established then it can tolerate longer times between drinks. Its natural habitat is along sheltered, dry cliffs. It's pretty fast growing and is a great screener if you need to block out any unsightly buildings or neighbouring projects.

It's a shy fella occurring only in Victoria and is rare and vulnerable in the wild with only small pockets of it naturally occurring.

A well known botanist who used to live near Glynn's Reserve, discovered a flowering *Pomaderris vacciniifolia*. He recognised it as 'not common around here' and kept an eye on it. He collected some seeds and passed them on to FOWSP nursery where they were germinated successfully. He then went on to incorporate this VROT (Victorian Rare or Threatened) plant into its current revegetation program with Parks Victoria. It has been successfully replanted along the Yarra river and other appropriate sites.

It makes for a beautiful, sheltered, screening plant with showy, cream, small flowers in spring time.

It's available right now in the nursery until stocks last.

*Annette*

Note while Flora of Melbourne spells this *vacciniifolia* the International Plant Name Index which is authoritative has *vacciniifolia (ii)* Editor.



Close-up of the blooms of *P. vacciniifolia*  
Photos by Linda

This gorgeous specimen was in full flower in September 2012,

## FOWSP features in slide show



The Committee is very positively impressed with the electronic advertisement that Wayne Rankin has produced for FOWSP. It is designed to raise awareness of FOWSP in the local community. One of the screenshots is shown above. Look out for this as you shop at the local IGA. Many thanks to Wayne and thanks also to Jeff Cranston who negotiated this project.

## Manningham City Council Environment Seminars



**The Environment Seminars are held on the first Wednesday of the month.**

Many of the seminars will be complemented with field sessions to facilitate broader education on the topics. No bookings are required for the evening talks; however, RSVPs must be provided for the field sessions. Due to the popularity of the field trips bookings are limited to three field trips per person. You must attend the corresponding seminar to keep your field trip booking. **Bookings now open.**

**Venue:** Bull and Bush Room at the Grand Hotel, Warrandyte **Time:** 7.30 pm

**Enquiries:** Lyn Meredith, 9840 9326

### Wednesday April 5th—Our Wildlife Neighbours by John Harris

John will discuss the results of fauna surveys undertaken in Currawong Bush Park and 100 Acres Reserve in 2016. More than 70 species of wildlife were recorded during the brief survey including many birds, frogs, reptiles and ten species of mammals, including microbats. John is the Director and Principal Zoologist of Wildlife Experiences.

If you attend this event, you may also book to attend the **Saturday 8th April 7:30pm to 9:pm field trip: Night time spotlight and microbat survey walk with John Harris.** John will lead a spotlight walk around 100 Acres Reserve, looking for some of our wildlife neighbours and in recognition of Australasian Bat Night, he will attempt to trap some microbats to educate the attendees about these fabulous local animals and allow for a closer look at them.

**Venue:** Will be given at time of booking

**Bookings** are essential. Please email [eepadmin@manningham.vic.gov.au](mailto:eepadmin@manningham.vic.gov.au) to book.

**Wednesday May 3-The River and the Bay - the Yarra beyond the Valley - Presented by Dr Neville Rosengren.** Neville will take us on a geological journey to describe the origins of the Yarra River and the formation of Port Philip Bay. He will discuss the Yarra delta, the form and origins of the bay and the river at lower and higher sea-levels.

If you attend the above event, you may also book to attend the field trip:

**How we modified a river with Neville Rosengren Thursday 04 May 2017, 10.00 am to 3.00 pm** This field tour will explore the lower Yarra modifications including Herring Island, the meander cut offs near the Botanic Gardens, and the removal of the Queen Street falls and Coode Canal.

**Please note, you must attend Dr Neville Rosengren's seminar on Wednesday 3 May to be eligible to book and attend this field trip.** **Venue:** Will be given at time of booking

FOWSP COMMITTEE 2016/17			OTHER FOWSP CONTACTS	
Artur Muchow	0415 383328	Secretary	<u>Nursery Manager</u>	Josh Revell
			<u>Nursery Phone</u>	0408 317 327
			<u>email nursery@fowsp.org.au</u>	
Lynda Gilbert	9844 0106	Treasurer	<u>Park Office</u>	03 8427 2132
Linda Rogan	9435 5806	Newsletter editor	<u>Newsletter assist and Librarian</u>	
	editor@fowsp.org.au		Gloria Moore	0402 285005
Annette Lion	0414-249-729	Facebook Coordinator	<u>Wildlife Rescue</u>	Adriana Simmonds 9722 2908
Caitriona Young	9844 2842	Minute Secretary		
Gray Ardern	0418 190261		<u>Market Trailer Jan Falconer</u>	9844 1226 or 0419 872 096
John Blake	0418329 937		<u>email trailer@fowsp.org.au</u>	
Joy Hick	0418573916		<u>Manningham Council Rep</u>	
			Cathy Willis	0427 660 651
Kelvin Watkins	0488 039 774		<u>Webmaster and membership</u>	Jason Patton 0402 121838 jason@parau.com
Carolyn Noel	0409 901 441		Website:	www.fowsp.org.au
Jeff Cranston	0418 396 647	Advisor to the committee	FOWSP general enquiry number	1300 764 422
	legality@bigpond.com			

The views and opinions expressed in this publication are those of the authors, and do not necessarily reflect those of FOWSP

Newsletter Team this month: Linda Rogan, Gloria Moore, Lisa Jenkins  
Mel Coupar (Line drawings)

**Next Committee Meeting**  
**Date:** Tuesday April 11 2017  
**Venue:** Education Centre, Pound Bend  
**Time:** 19:30 pm sharp

**TAGS** (Thursday activity groups)

TAGS meet at the nursery at 9.00 am for a 9.15 am departure. Please remember to wear appropriate footwear and clothing for the weather, and please bring your own filled water bottle.  
 Contact number: 0408 317 327

Thurs	6 April	9:00-12:00	Norman's Reserve	Woody weeding	Moderate	FOWSP
Thurs	20 April	9:00-12:00	Petty's Orchard	Woody weeding	Moderate	FOWSP
Thurs	4 May	9:00-12:00	Mullum Mullum, Beckett Rd	Maintain plantings	Moderate	FOWSP
Thurs	13 May	9:00-12:00	Gold Memorial car park	Planting with ACCA	Easy	FOWSP & ACCA

**Difficulty ratings:**  
**Easy:** Even terrain, some light lifting, kneeling and bending involved. Few tripping hazards.  
**Moderate:** Uneven terrain, light to heavy lifting, kneeling and bending involved. Tripping hazards present.  
**Difficult:** Steep terrain, light to heavy lifting, working in over-grown areas and lots of bending. Many tripping hazards and slippery surfaces present.

Check the website for any changes at <http://fowsp.org.au/activities.php>  
**Please note TAGS and activities will be cancelled on Total Fire Ban days or when weather conditions are deemed hazardous.**

## FOWSP THURSDAY PROGRAM

We meet for propagation and other nursery activities every Thursday morning at 9.30 am at the Warrandyte State Park depot, Pound Bend Road, Warrandyte (Melway 23 C10), unless otherwise stated below. Propagation takes place from 9.30 am to 12.30 midday.

No prior experience necessary -

There is always someone available to show you the ropes.

### NURSERY OPENING HOURS

The nursery is open for plant sales every Thursday.

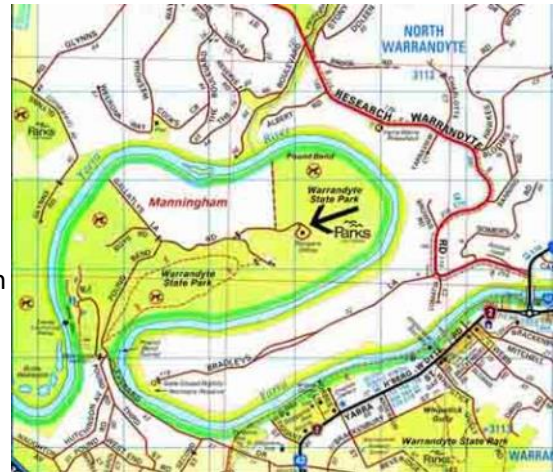
9.30 am to 12.30 pm

and

the first Saturday of every month, 9am to 2pm (to coincide with the Warrandyte Market) - April to November only.

**Closed Christmas and New Years days.**

**Also closed to customers and volunteers on days of severe weather and on Total Fire Ban Days**



Copyright 2008 Melway Publishing Pty Ltd  
Reproduced from Melway Edition 36 with permission

**Prices:** Members \$2.00 Non-members \$2.50



## FOWSP/Manningham Thursday nature walks

Leader: Cathy Willis



**This series of free nature walks will explore various sections of the Yarra River from the eastern end of Manningham in Wonga Park downstream to Templestowe.**

Each walk is paced to allow participants to enjoy and appreciate the natural beauty of the area. Please wear appropriate clothing for the weather including a hat and sturdy footwear. Bring a water bottle and snack.

**9:30 am Thursday 27 April 2017 Longridge and Nilja Nature Walk** For more than 150 years Longridge farm was grazed by cattle. Now, under Parks Victoria management it is recovering with plant regeneration and the return of wildlife. The ridge offers spectacular views to the north and of the beautiful rapids of the Yarra River.

**Distance:** 5 km **Time:** 3 hours **Rating:** Difficult

**9:30 am Thursday 25 May 2017 Tikilara Circuit** Tikilara Park is part of the Yarra Valley Parklands in Templestowe. It includes a healthy riparian corridor (zone between the land and the river) as well as the Pontville Homestead, which was home to the Newman family, the first settlers this far east of Melbourne. Cattle still graze around the historic homestead.

**Distance:** 5km **Time:** 3 hrs **Rating:** Moderate

All distances and finishing times are approximate.

### **Ratings:**

**Easy** – Flat or undulating well formed tracks/paths with low tripping hazards.

**Moderate** – May include some moderately steep or narrow sections or have higher tripping hazards.

**Difficult** – Includes steep and/or narrow sections, slippery sections, or high tripping hazards.

**Bookings can be made online and are essential as places are limited. Bookings open 2 months before the walk date.** [www.manningham.vic.gov.au/nature-walks](http://www.manningham.vic.gov.au/nature-walks)

The meeting place will be provided at the time of booking.

Please note that nature walks will be cancelled on a day of Total Fire Ban or extreme weather warning as Parks Victoria will close all local parks.

Young FOWSPians



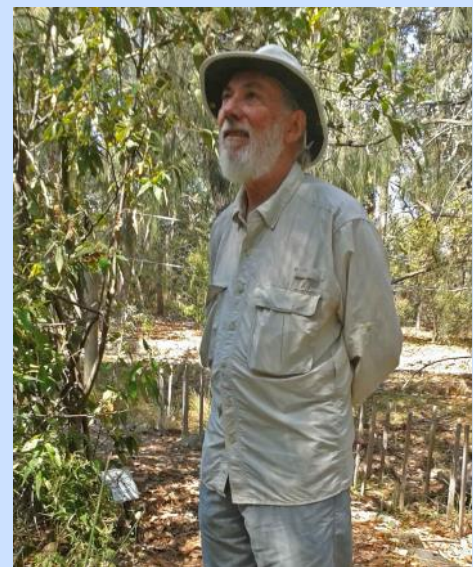
Some of our younger volunteers, Annette's girls Luna and Mikaia (above) appeared to enjoy organising plant labels before the Warrandyte Festival. Thanks girls! The nursery plants in the evening sunlight await the labels (below). Photos by Annette



Visit from Mallacoota Members

Its always a pleasure when one of our past committee members drops in to see how things are going. Martin Hiley now from Mallacoota stayed long enough for Linda to show off Frogland (below and right).

He and his wife Tricia also joined the staff for fish and chips that day.



FOWSP MARKET TRAILER

Thanks to those who helped out on Saturday 4th March 2017  
**Diane and John Baird, Jeff Cranston, Caitriona Young**  
**Christine Andell, Steve Anderson, Lyn Moore, Maree Krause**



Special thanks to **John Young** who transported the market trailer.

The Warrandyte market is held on the first Saturday morning of the month from 8.30 am to 12.30 pm at Stiggants Reserve. Volunteers are rostered in pairs to (man/woman) the FOWSP information trailer for just one hour.

If you are interested in being on the market roster in the future please contact **Jan Falconer 0419 872 096 email trailer@fowsp.org.au**  
First timers are always paired with someone more experienced.

**Next market dates are:** Saturdays, April 1st and May 6th

## Raising awareness of rare frogs

FOWSPians and Rangers gathered at the Folly to hear about a rare frog that may still be in the Warrandyte area. Nigel Philpot and James Frazer presented material about the Southern Toadlet as well as about a phone app that will make it a lot easier to log sound recordings with the Frog Census Project. For details see below



Rangers Cam and Bernie

Nigel Philpot Environmental  
Education Officer MCC

James Frazer  
Frog Census Coordinator  
Melbourne Water

## Wanted: Have you seen this Toadlet?

MELBOURNE WATER is seeking your help this Autumn to find a rare species of 'toadlet' in the Manningham and Nillumbik areas.

The **Southern Toadlet** (*Pseudophryne semimarmorata*) is recorded throughout the east and south of Melbourne however it appears to be declining throughout its range. Habitat loss, altered hydrology, disease (Chytrid fungus), drought and climate change are all likely drivers of decline. The species is currently listed as vulnerable on the DELWP *Advisory List of Threatened Vertebrate Fauna-2013*.

We need your help to record these toadlets and contribute to a population health check. Southern Toadlets occupy damp, seasonally inundated habitats within woodlands, dry forests, shrubland, grassland and drainage lines. Males call from shallow terrestrial burrows during Autumn. Females visit and lay eggs in these burrows, leaving the male to guard the brood. Eggs hatch following Autumn rains and tadpoles are flushed into inundated areas.

You can read more about the Southern Toadlet and listen to calls here: <https://frogs.org.au/frogs/species/Pseudophryne/semimarmorata/>

To report Toadlets (and any other frogs you may hear calling) download the free **Melbourne Water Frog Census app** for Apple and Android mobile phones. The app allows you to record, identify and report frogs direct to our Frog Census program.

Available for download here (along with other frog resources):

<https://www.melbournewater.com.au/frogcensus>



**Southern Toadlet**  
*Pseudophryne semimarmorata*  
Photos: Peter Robertson



*(Continued from page 2)*

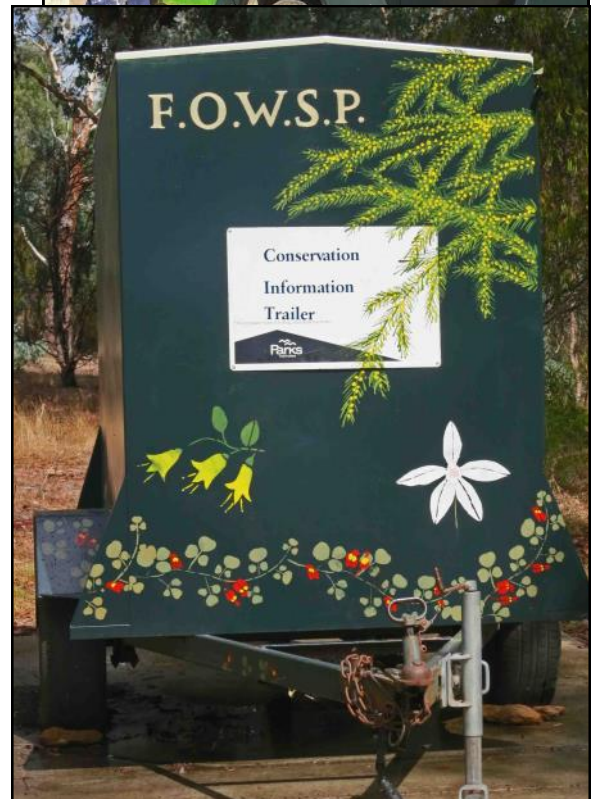
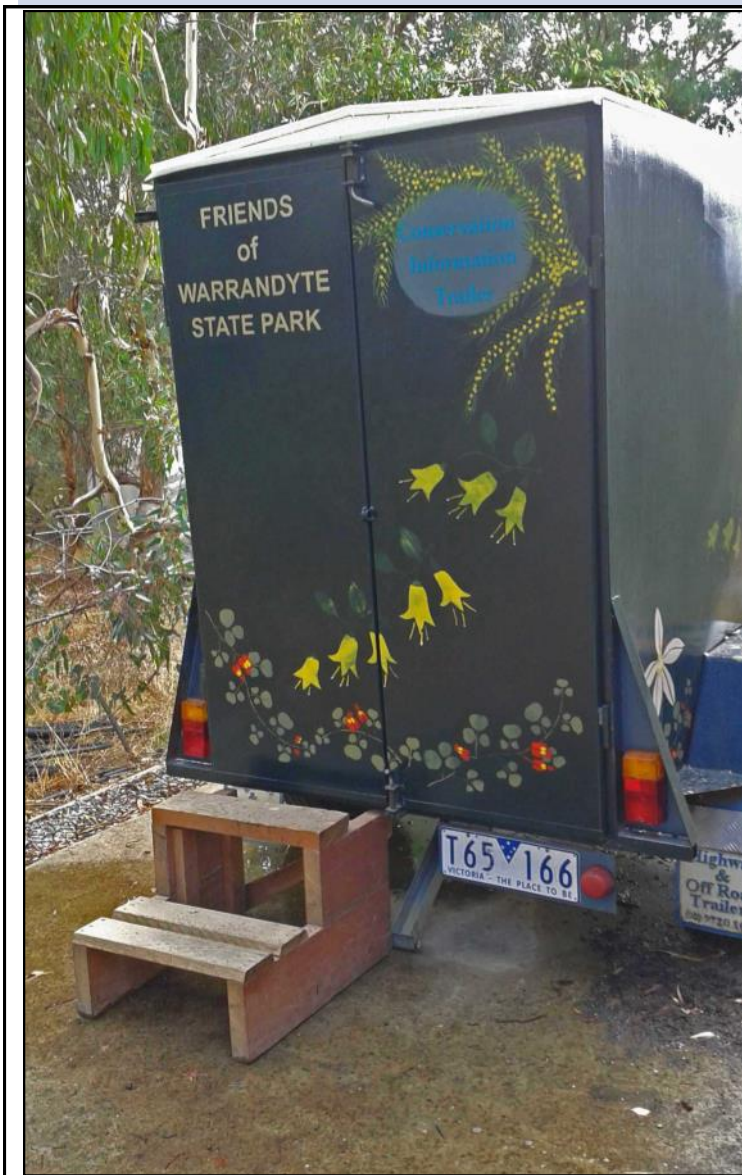
maintenance at this site, a fox was sighted dashing across the track towards the bird hide and wetlands.

Plants put in during the last year include eucalypt varieties, *Acacia*, *Leptospermum*, *Allocasuarina*, *Lomandras* and other bushes and trees.

We have many birds for company when at Petty's. The wetlands support many water birds including swamp hens, dusky moorhens, Eurasian coots, Pacific black and maned wood ducks & other migratory birds. Yellow tailed black cockatoos, lorikeets, Eastern rosellas, kookaburras, red wattlebirds, and predatory birds frequent the wetlands. The wetlands are also home to many reptile species, snakes, lizards, and eastern snake neck (long neck) turtles, and variety of frog species.

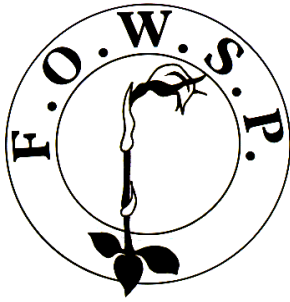
The wetlands also has many other interesting features, deserving of protection or conservation.

*Thanks to Janaya for assisting with this article.*



How fortunate we are to have such talented FOWSPians. What a wonderful mobile piece of art to help raise awareness of FOWSP at Festivals and Markets. Thanks again to Carolyn and her many talented helpers.

FOWSP Submission on possible reforms of the Flora and Fauna Guarantee Act can be seen on the FOWSP website [fowsp.org.au](http://fowsp.org.au) see: Publications / Submissions / Review of the Flora and Fauna Guarantee Cat 1988 Consultation Paper March 2017.



Print  
Post  
346802/0005

Postage  
Paid  
Australia

**REGISTRATION BY AUSTRALIA POST  
PP 346802 / 0005**

If undeliverable please return to  
Friends of Warrandyte State Park Inc.  
P.O. Box 220 **Warrandyte, 3113**



**False Garden Mantis *Pseudomantis albofimbriata*  
The Gardener's friend**

In my garden one day in March I photographed 3  
different individuals of this species, 2 green  
and 1 brown.

This species has only been common within Victoria  
since the mid 1990s and most likely travelled from  
the Sydney area via eggs attached to pot plants.  
It is now one of the two most common species around  
Melbourne suburbs.

Here it is devouring a Cabbage Butterfly but it will  
eat most anything it can catch.

*Linda*

**April 2017 Vol. 35 no. 3**

**PLEASE CHECK YOUR ADDRESS LABEL TO SEE IF YOUR SUBSCRIPTION IS DUE**

**FOWSP Membership Renewal Form**

Name .....

Address .....

.....

Telephone no. ....

Email .....

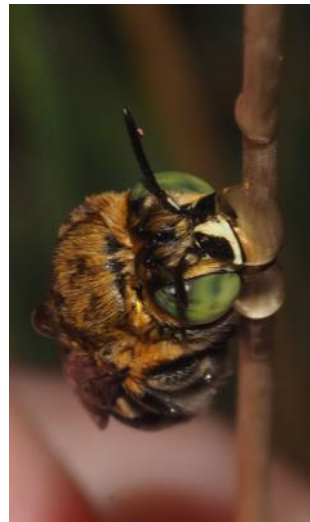
Membership (family) \$30  
Concession \$15

Newsletter by email  (tick box)

Send to: FOWSP PO Box 220, Warrandyte 3113 or renew on the website [www.fowsp.org.au](http://www.fowsp.org.au) with the  
option of direct deposit payment.

*This newsletter is printed on recycled paper*

**Email photo bonus page**



Dragonflies from Fourth Hill.  
 (Top left) male Blue Skimmer (top right) the yellow female or else young (yellow) of the same species *Orthetrum caledonicum*  
 (Middle left) is the Unicorn Darner *Austroaeschna unicornis*.  
 (Above right) female and male Blue Banded bees *Amegilla asserta* sleeping-in the welcome late March rain.

Photo right? Am I allowed to put this in?  
 My son, myself and his 2 daughters, aged 11 and 1 day old. Perhaps Aida Mae will be a future FOWSPian.

**Your photos can appear on this page (subject to space available) if you email them as follows:  
[editor@fowsp.org.au](mailto:editor@fowsp.org.au)**