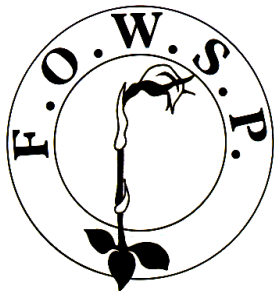


Friends of Warrandyte State Park



Newsletter

Website: www.fowsp.org.au

Friends of Warrandyte State Park (FOWSP) Inc. PO Box 220 Warrandyte 3113
 ABN 94170156655/Incorporation No. A0024890C

Editor's Corner

WINTER DOES NOT slow FOWSPians down. In fact they work harder than ever as it is the planting season and so many plants need to be propagated. A small fire helps to maintain the morale and the warmth.

Early winter is also the fungus season. Page 2 has some recent observation and also a small undesirable visitor to the nursery. Frogland progress and a dilemma are discussed on p. 3.

Artist, poet and FOWSPian Kim Tarpey shares some of her talented inspiration on page 4.

A Rifle Range TAG has inspired items on pages 7-9.

Important news on various local environmental issues will also be found on p. 9.

Please note that in winter, the July and August newsletters are combined into one so that the next to come out will not be until September. During these months I will be travelling in NT and WA so I need some help from all FOWSPians who are staying in the local area. I will need your photos and news from around Warrandyte and the nursery in order to have up to date and local items for the September newsletter. Although I will still be on the road, I will try to put a newsletter together from whatever you email me plus perhaps a few highlights from warmer climes.

And as always I hope this newsletter helps to 'warm the cockles of your hearts' in the meantime. If unsure about 'cockles' check out the following: <https://www.grammarphobia.com/blog/2010/01/a-mollusk-proposition.html>

Linda



**F
U
N
D
R
A
I
S
E
R**



Enjoy great wine and help support-
Friends of Warrandyte State Park. Find out more here: <http://goodwillwine.com.au/charities/friends-of-warrandyte-state-park/>

Friends of Warrandyte State Park will receive a minimum of 50% of the profits resulting from your purchase- cheers to that!"

**Deadline for September edition newsletter is
 Friday 25 August 2017**

contributions can be emailed to Linda Rogan editor@fowsp.org.au
 or posted to PO Box 220, Warrandyte 3113



**Alwynne Buntine finds
*Leucopaxillus cerealis (albissimus)***

YOU DON'T HAVE to go into the bush to find unusual fungi, you just have to look in your local suburban environment. Whilst walking around the North Ringwood Sports Ground, I saw a basket fungus *Ileodictyon cibarium* in one of the gardens with another different looking one nearby. On telling my neighbours, the Fuhrers about it, Bruce offered to come back to the spot with me and take a look at it. It turned out to be a very uncommon species named *Leucopaxillus cerealis albissimus* first observed in June 2007. The following abstract in *The Victorian Naturalist* October 2012 from an

article by Virgil and Jurrie Hubregtse, describes it better than I can and the entire article is deserving of a read as the appearance of the fungus was followed for several years.

Abstract:

Since June 2007 *Leucopaxillus cerealis (albissimus)* Fungi Agaricales has been observed growing under eucalypts in garden beds at Monash University Campus in suburban Melbourne Victoria. A description of the fungus is given which represents the first record of the species from Australia. Significant variation in the appearance of the fruit-bodies was observed between occurrences in different years, possibly because of different weather conditions. The antibiotic properties of the species could have important implications the Australian Environments.



Reference:

Hubregtse, Virgil and Hubregtse, Jurrie. The fungus '*Leucopaxillus cerealis*' newly recorded from Australia *Victorian Naturalist, The*, Vol. 129, No. 5, Oct 2012: 160-166.

Joy Hick identifies *Cortinarius archeri*.

WHILST UNDERTAKING an exploratory walk from Clifford Scout Camp to Warrandyte, I came across this fungi specimen, *Cortinarius archeri* (photo below). *A field guide to Australian Fungi*, by Bruce Fuhrer, provided confirmation of the species.

The guide is very handy for anyone wanting to identify fungi in our Park & further afield.

Joy



Small pointed snail in greenhouse

JOSH POINTED this out to me hoping for an ID. It has only recently began to appear in the nursery greenhouses.

After advice from Irene on BowerBird and searching Google to compare her suggested name on PaDil I think it is most likely *Prietocella Barbara*, an exotic agricultural pest from the Mediterranean.

Linda



More paths to explore in Frogland



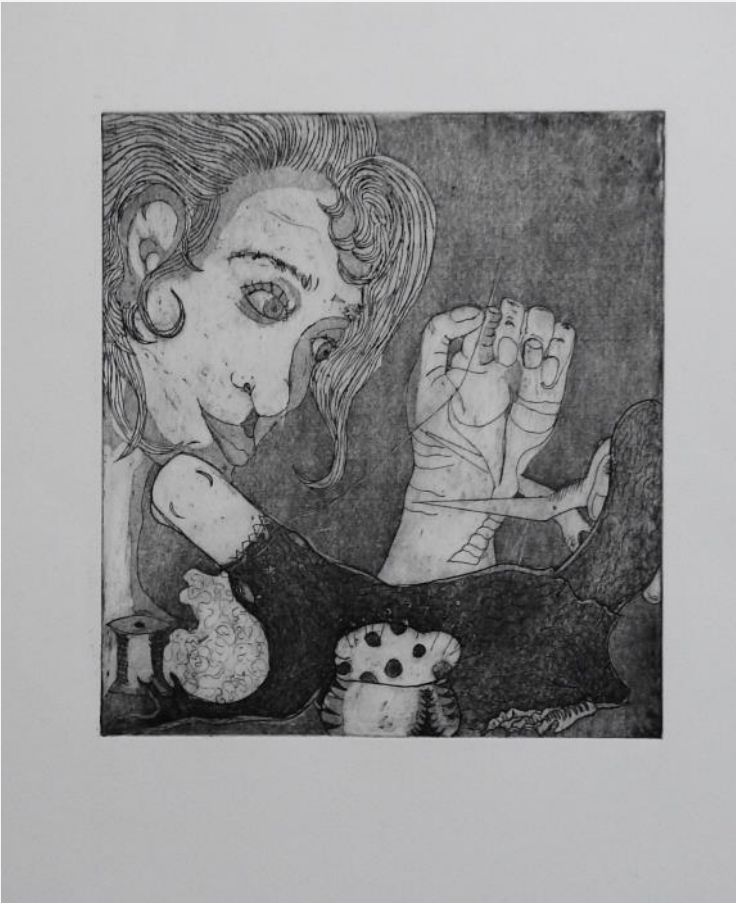
THE WORDS ‘...extend the pathway’ had hardly left my mouth before Kelvin and Jason jumped to it in early June. Some of the remaining undeteriorated carpet, previously used elsewhere in Frogland, served as a weed-mat. Wood mulch, along with logs along the edges, completed the task. Two weeks later the path builders with supervisor Peta were ready to pose alongside the finished pathway accompanied by the inspectors Allison, Caitriona and Marie who gave the project five star approval stamp (or stomp) of approval.

Josh's Frogland Challenge

JOSH CHEERFULLY handed over the tube of *Daucus glochidiatus* one of the plants referred to as wild carrot, saying ‘plant this along with the orchids and Drosera’. This is an annual plant that will reseed itself each year.

As this came while we were clearing out weedy seedlings of *Fumaria* pictured below Marie and I examined each plant closely in the hope that by next year when the seedlings of each appear, we will be able to tell them apart. The major difference I can see and hope to remember is that the native *Daucus* is sparsely covered in fine hair while the *Fumaria* is hairless. See also back cover info.





Monotreme

When we encountered the platypus
 It confused us!
 Duck beak and webbed feet
 Had to be a huge deceit.
 The bill wasn't right
 What a sight
 Hard to fathom
 That claw with venom!
 Eggs they say,
 It's supposed to lay
 Like a bird
 So absurd
 No seams or glue
 Best think it through.

Now Consider this

The party balloon
 Popped! On route to the moon
 Fell not to the ground
 But the Yarra it found
 The platypus found dead
 Had eaten it instead.

Thanks to member Kim Tarpey for this poem and the image of her etching. These will appear in an artists' book called *Stupid Dog* which will be on display at a Book fair in Queensland at Griffith University in July 2017.

TAGS (Thursday activity groups)

**TAGS meet at the nursery at 9.00 am for a 9.15 am departure. Please remember to wear appropriate footwear and clothing for the weather, and please bring your own filled water bottle.
 Contact number: 0408 317 327**

Thurs	6 July	9 -12 am	TBA	Planting	Moderate	FOWSP
Thurs	20 July	9 -12 am	Mt Lofty	Planting	Easy	FOWSP
Sunday	30 July	10:00	Pound Bend car park	Planting	Easy	FOWSP
Thurs	3 Aug	9 -12 am	Hochkins Ridge	Sallow Wattle removal	Moderate	Parks Ranger
Thurs	17 Aug	9 -12 am	Yarra Brae	Bone seed weeding	Difficult	Parks Ranger
Thurs	31 Aug	9 -12 am	Ridge Block	Woody weeding	Difficult	FOWSP

Difficulty ratings:

Easy: Even terrain, some light lifting, kneeling and bending involved. Few tripping hazards.

Moderate: Uneven terrain, light to heavy lifting, kneeling and bending involved. Tripping hazards present.

Difficult: Steep terrain, light to heavy lifting, working in over-grown areas and lots of bending. Many tripping hazards and slippery surfaces present.

Check the website for any changes at <http://fowsp.org.au/activities.php>

Please note TAGS and activities will be cancelled on Total Fire Ban days or when weather conditions are deemed hazardous.

FOWSP COMMITTEE 2016/17			OTHER FOWSP CONTACTS	
Artur Muchow	0415 383328	Secretary	<u>Nursery Manager</u>	Josh Revell
			Nursery Phone	0408 317 327
			email nursery@fowsp.org.au	
Lynda Gilbert	9844 0106	Treasurer and Membership	<u>Park Office</u>	03 8427 2132
Linda Rogan	9435 5806	Newsletter editor	<u>Newsletter assist and Librarian</u>	
	editor@fowsp.org.au		Gloria Moore	0402 285005
Annette Lion	0414-249-729	Facebook Coordinator	<u>Wildlife Rescue</u>	Adriana Simmonds 9722 2908
Caitriona Young	9844 2842	Minute Secretary	<u>Market Trailer Jan Falconer</u>	
Gray Ardern	0418 190261		9844 1226 or 0419 872 096 email trailer@fowsp.org.au	
John Blake	0418329 937		<u>Manningham Council Rep</u>	
Joy Hick	0418573916		Cathy Willis	0427 660 651
Kelvin Watkins	0488 039 774		<u>Webmaster</u>	
			Jason Patton	0402 121838 jason@parau.com
Carolyn Noel	0409 901 441		Website: www.fowsp.org.au	
Jeff Cranston	0418 396 647	Advisor to the committee	FOWSP general enquiry number 1300 764 422	
	legality@bigpond.com			

The views and opinions expressed in this publication are those of the authors, and do not necessarily reflect those of FOWSP

Newsletter Team this month: Linda Rogan, Gloria Moore, Lisa Jenkins
Mel Coupar (Line drawings)

Next Committee Meeting

Date: Tuesday July 11th 2017

Venue: Education Centre, Pound Bend

Time: 19:30 pm sharp

Manningham City Council Environment Seminars



The Environmental Seminars are held on the first Wednesday of the month.

Many of the seminars will be complemented with field trips to allow broader education on the topics. Bookings are not required for the evening seminars; however bookings must be made for the field trips.

Due to the popularity of field trips, bookings are limited to two field trips per person for the series. You must attend the corresponding seminar to be eligible to attend and keep your booking for field trips.

In the event of extreme weather, including a Code Red Fire Danger Day, the seminars and field trips **will not go ahead.**

Venue: Bull and Bush Room, Grand Hotel, Warrandyte Time: please arrive at 7.20 pm for a 7.30 pm start
Enquiries: 9840 9124

Wednesday 5 July—Conservation of the Superb Lyrebird on the Melbourne fringe Presenter Alex Maisey

In addition to being a world-renowned mimic, the Superb Lyrebird has recently been recognised as an ecosystem engineer, due to the massive volume of soil displaced by the species when foraging. PhD candidate Alex Maisey will introduce you to the fascinating life of the lyrebird, their functional role in forest ecosystems and share some footage of their elaborate courtship displays. Alex will also present some of his research on the habitat requirements of the species in the context of conservation within Melbourne's fringe.

Wednesday 2 August - The social and natural history of the Hawkesbury River - Lessons for the Yarra Presenter Professor Paul Boon

Professor Paul Boon from the Institute for Sustainability & Innovation at Victoria University, will speak about the social and natural history of the Hawkesbury River, the longest coastal river in NSW. He will discuss the river in the context of the English settlers and Aboriginal history going back at least 42,000 years. Hear about how the river has been modified by humans, but equally importantly, how it has influenced us. The lessons learnt of the Hawkesbury have significant implications for our own Yarra River, and these will also be discussed.

FOWSP THURSDAY PROGRAM

We meet for propagation and other nursery activities every Thursday morning at 9.30 am at the Warrandyte State Park depot, Pound Bend Road, Warrandyte (Melway 23 C10), unless otherwise stated below. Propagation takes place from 9.30 am to 12.30 midday.

No prior experience necessary -

There is always someone available to show you the ropes.

NURSERY OPENING HOURS

The nursery is open for plant sales every Thursday.

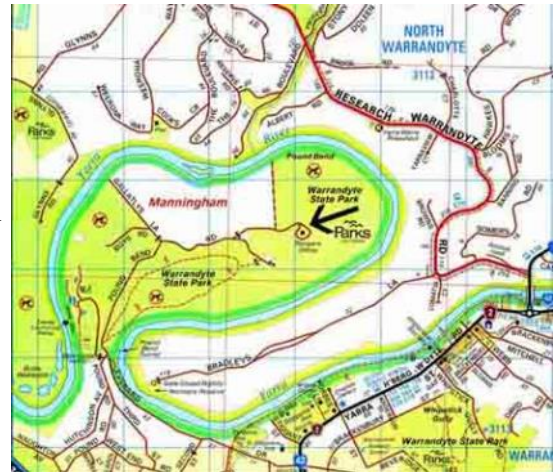
9.30 am to 12.30 pm and

the first Saturday of every month, 9am to 2pm (to coincide with the Warrandyte Market) April to November only

Closed Christmas and New Years days.

Also closed to customers and volunteers on days of severe weather and on Total Fire Ban Days

Prices: Members \$2.00 Non-members \$2.50



Copyright 2008 Melway Publishing Pty Ltd
Reproduced from Melway Edition 36 with permission



FOWSP/Manningham Thursday nature walks



This series of free guided nature walks will explore a variety of local bushland areas in Manningham and are paced to allow participants to enjoy and appreciate the natural beauty of the area.

All distances and times are approximate. Please wear appropriate clothing for the weather including a hat and sturdy footwear. Bring a water bottle and snack.

Bookings are essential as places are limited and will open two months before the walk date. To book, visit www.manningham.vic.gov.au/nature-walks

The meeting point for each nature walk will be provided at the time of your booking. For enquiries, please call 9840 9129.

Please note that nature walks will be cancelled on a day of Total Fire Ban, Code red Fire Danger Rating or extreme weather warning.

9:30 am Thursday July 27 Longridge and Nilja

For more than 150 years Longridge farm was grazed by cattle. Now, under Parks Victoria management it is recovering with plant regeneration and the return of wildlife. The ridge offers spectacular views to the north and of the beautiful rapids of the Yarra River.

Distance: 5km **Time:** 3 hrs **Rating:** Difficult

9:30 am Thursday August 25 Wattles at Whipstick

At the peak of wattle season we will ascend Fourth Hill and seek out the wattles that grow in the harsh stony hills, returning along the river to see the moisture loving species.

Distance: 4km **Time:** 2.5 hrs **Rating:** Difficult

Ratings:

Easy – Flat or undulating well formed tracks/paths with low tripping hazards.

Moderate – May include some moderately steep or narrow sections or have higher tripping hazards.

Difficult – Includes steep and/or narrow sections, slippery sections, or high tripping hazards.

On the way to Rifle Range TAG



IT IS A QUICK walk from parking at the gate at Five Creeks Track into an area of the Rifle Range now called Scentbark, where FOWSP has spent much time removing weedy wattles such as *A. howittii*, and *A. floribunda*.

In 2011, under supervision by Rangers Cam and Bernie, a fence was erected to discourage browsing by Sambar and Red Deer that were increasingly common in this area. After the 2009 bush fires, deer grazing had devastated new seedlings and only one *A leprosa* var. *uninervia* capable of producing seed remained in the Rifle Range area. While some built the fence, others planted 20 healthy wattles, then known as *A. leprosa* broad leafed form or Broad-leafed Cinnamon Wattle. As you can see in the photos above, these are now healthy shrubs and with many pedicles with flower heads at each leaf axil, will flower prolifically this year.

The Warrandyte cinnamon-wattle is recognised as a new species *Acacia stictophylla* Dandenong Ranges Cinnamon-wattle. It differs from the above by having few pedicles for flowering heads at each leaf axil.

The Scentbark sign also has an important story. The Green Scentbark *Eucalyptus fulgens* is endemic to a

(Continued on page 9)

From the Committee Meeting in June 2017

The video loop is now complete and will be running at the IGA.
See also Environmental Concerns on p. 9.

Nursery Report:

Sales are increasing steadily at present
A First Aid refresher course is to be organised

Ranger's Report

None at present

FOWSP MARKET TRAILER

Thanks to those who helped out on Saturday 3rd June

***Diane and John Baird, Jeff Cranston, Kelvin Watkins
Christine Andell, Marie Krause, Lyndy Gilbert and Ken Crook***

Special thanks to ***John Young*** who transported the market trailer.

The Warrandyte market is held on the first Saturday morning of the month from 8.30 am to 12.30 pm at Stiggants Reserve. Volunteers are rostered in pairs to (man/woman) the FOWSP information trailer for just one hour.

If you are interested in being on the market roster
please contact Jan Falconer 0419 872 096 email trailer@fowsp.org.au
First timers are always paired with someone more experienced.

Next market dates are: *Saturdays, 1 July, 5 August and 2 September 2017*



FOWSPians strengthen wildlife corridor and links with Kinglake NP



Thanks to Jan for taking this photo. I grabbed Jan's image from the previous photo I had taken so we could all appear together: Jan, Linda, Robin, David, Kinglake's Tony, Bernie, Gray, Cam, Kelvin, Bruce, Lee and Graham.



Tony demonstrates how to build a deer fence by doubling the star pickets.

SO MANY STORIES came from the TAG day on June 22. The morning's planting took place in a treeless slope in the easternmost part of Rifle Range Reserve. It was while assisting in this area that I heard the stories of *A. leprosa* var. *uninervia* and *E. fulgens* p.7. Shoulder-height *A. leprosa* var. *uninervia* are now growing there from previous plantings. Some have

suffered damage from deer browsing and antler rubbing (photo p. 9) or had tipped over after recent rains. Cam took time to prune these to remove weight before setting them upright with support near the roots. Planted on this day were *E. fulgens*, *E. cephalocarpa* Silver-leaved Stringybark, *A. verniciflua*, *Leptospermum scoparium* the latter planted straight from seedling trays.

An extra reward came at the end of the morning's work when we met up with Kinglake Ranger Tony at the top of Marshalls Road. He took time to show us several fenced revegetation plots, one including a wetland area (photo above). FOWSP had provided many of the plants. At the top of the hill was an area including *Banksia spinulosa* (photo right) and *Xanthorrhoea australis*.



Linda
PS If you hear a rumour that Linda was lost in the bush that day, disregard.

(Continued from page 7)

limited area east of Melbourne including the Dandenong Ranges. It has been extensively logged over the years. This Scentbark area in the Rifle Range Reserve, now contains the two largest surviving examples of the Green Scentbark which is the reason for the sign. The sign itself also has a story. It is made from one of the sturdy metal girders that were removed from a house on Parks Vic property and the lettering was welded in place by Ranger Bernie. What an attractive and fire resistant result. I have seen similar signs at Morrison's or Garrambi Baan but didn't ask if these are also Bernie's handywork.

On the day I visited Scentbark, Rangers Cam and Bernie were leading a nearby TAG just off Buttermans track. The important *E. fulgens* was one of the species being planted. See also p. 8.

Top: Planting the Rifle Range slope. Far right: *A. leprosa* var. *uninervia* with deer horn damage. Near right: Tray of *E. fulgens* (fulgens means shiny).



ENVIRONMENTAL CONCERNS

Pigeon Bank Land Development:

Carolyn Noel sent a letter detailing FOWSP's concerns to Nillumbik Councillors. FOWSP will donate \$200 to the Green Wedge Protection Group to help defray some of the VCAT costs.

Nillumbik Residents please note:

Nillumbik Council is recruiting interested parties to join an Environment and Sustainability Advisory Committee. FOWSPians who live in Nillumbik may want to be involved in this committee. For details and requirements see the Nillumbik website as below:

<http://www.nillumbik.vic.gov.au/Environment/Environment-and-Sustainability-Advisory-Committee-expression-of-interest>

Jumping Creek Upgrade: A reference panel has been formed to advise on this issue. FOWSP is not represented but will keep in touch with developments.

NORTH EAST LINK THROUGH WARRANDYTE?

A REPRESENTATIVE from the Warrandyte Community Association attended a forum at Banyule City Council on Tuesday 30 May regarding the completion of the North East Link. Some 800 people - mainly from Banyule - attended, and voted against the link through Banyule, even though the land for the freeway has been set aside for some 40 years. Essentially, Banyule City Council is campaigning to promote the construction of the Link to be routed through Greensborough-Eltham-west of Warrandyte-Donvale to Ringwood, i.e Route 2.

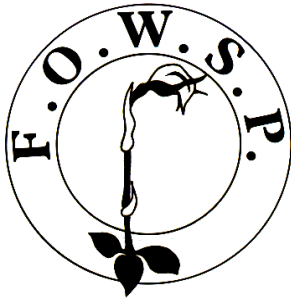
Half the question time was taken up by exhausted residents of Rosanna Road, also those who walk their children to school over and along this "drain". The group in that region is "Resolve Rosanna Road". The questioning was so intense that the VicRoads rep (Vince Punaro) used his summing up time to say he "would have another look at what could be done with Rosanna Road".

Not only is Banyule actively lobbying Not in My Back Yard (NIMBY) but the Authority has just launched a community survey which must influence the proposed route.

All FOWSPians are urged to complete an online survey at https://www.research.net/r/NELA_CS1 and voice your concerns about the environmental impacts of the proposed freeway by using the comments spaces to emphasize the need to consider the least overall environmental damage in choosing the route and building the link.

Lyndy





Print
Post
346802/0005

Postage
Paid
Australia

**REGISTRATION BY AUSTRALIA POST
PP 346802 / 0005**

If undeliverable please return to
Friends of Warrandyte State Park Inc.
P.O. Box 220 **Warrandyte, 3113**



Australian Carrot Daucus glochidiatus

This plant is a member of the carrot family
Apiaceae and it is said that Aborigines ate
the roots. This is one of several plants
called wild carrot.

See page 3 for the challenge this plant pre-
sents to Froglanders.

July/August 2017 Vol. 35 no. 6

PLEASE CHECK YOUR ADDRESS LABEL TO SEE IF YOUR SUBSCRIPTION IS DUE

FOWSP Membership Renewal Form

Name

Address

.....

Telephone no. Email

Membership (family) \$30
Concession \$15

Newsletter by email (tick box)

Send to: FOWSP PO Box 220, Warrandyte 3113 or renew on the website
www.fowsp.org.au with the option of direct deposit payment.

FOWSP is a member of Landcare Victoria Inc. and subscribes to their insurance package for member groups. Landcare Victoria Inc. (LVI) is an independent incorporated association governed by its members, formed when the Farm Tree and Landcare Association (FTLA) merged with the Victorian Landcare Council (VLC) in 2017.

This newsletter is printed on recycled paper

Email photo bonus page



These photos taken in May of Sarah and Michelle and the 'cockle-warming' vegan chocolate cake got overlooked in June but are too gorgeous to leave unshared.

Good moss, bad moss

FOR SOME TIME an exotic moss has been spreading across our bushland areas. The problem with this moss that was introduced from the northern hemisphere is that it grows in thicker pads than our native mosses and can smother our mosses and plants such as orchids that like to grow in moss pads. It was mentioned in FOWSP Newsletters as early as 2003.



Good moss
This one looks like
Hypnum cypressiforme
to me

I needed close-up photos in order to see that the weedy Neat Feather-moss appears to be much smoother with shiny scale-like leaves as seen below.

Linda



Bad moss
Pseudoscleropodium purum
Neat feather-moss

Your photos can appear on this page (subject to space available) if you email them as follows:
editor@fowsp.org.au