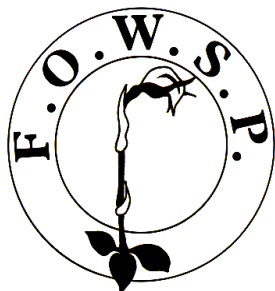


Friends of Warrandyte State Park



Newsletter

Website: www.fowsp.org.au

Friends of Warrandyte State Park (FOWSP) Inc. PO Box 220 Warrandyte 3113
 ABN 94170156655/Incorporation No. A0024890C

Editor's Corner

Another busy month at FOWSP, the spring rains have been just enough to encourage weeds to continue to grow in Frogland so we have recruited as much help there as possible. Thanks to Page and Ben and all others who have helped. (Front page and pp. 4 & 8)

The Walert Creek Project is officially underway (P. 3). The same page holds a birthday celebration.



Why is Ranger Cam looking so relaxed and Happy here? See p. 3.

Hand pollination of orchids was demonstrated (see p. 7).

A successful sausage sizzle is featured on p. 8.

On p. 9 learn something about cuckoos and also the new SHAG project. It may not be what you think.

Heaps of activities are coming up in November. See you at the AGM as per the information below. Those of you who share my interest in nature's small creatures won't want to miss the evening at the Folly with the Entomological Society on Saturday 25 November (details p. 4).

Hope to see you there.

Linda



Page and her dad Jared were a great help with the weeding in Frogland. See p. 7 for something special Page found for me to photograph.

Notice to all FOWSP members:

The AGM will be held on Sunday 12 November 2017, 5:00 pm at the Folly.

The purpose of this meeting is to receive annual reports and select the Committee of Management. All positions will be declared open. Nomination forms are available through the secretary at 0415 383328 artur@netspace.net.au.

The meeting will be followed by BYO drinks and nibbles and a BYO everything BBQ. A great chance to relax with Friends.

Deadline for December edition newsletter is

Friday 24 November 2017

contributions can be emailed to Linda Rogan editor@fowsp.org.au
 or posted to PO Box 220, Warrandyte 3113

TAG activities: Not just weeds

COUNTING orchid plants was the focus on this October morning.

These plants were the Bronze Bird Orchid *Chiloglottis x pescottiana* (inset below) a hybrid between the Common Bird-orchid *C. valida* and the Dainty Wasp-orchid *C. trapeziformis* each shown below. All three can be found in the Jumping Creek area. Time was also found for planting *Craspedia variabilis* and tidying up past planting sites.



Photos above : Robyn Gillespie
Inset: *Chiloglottis x pescottiana* Orchid photos: Josh



Chiloglottis x pescottiana

Earlier Josh was lucky enough to photograph the pollinating wasp on the Dainty Wasp-orchid. This is the one that can be seen blooming in the nursery and pollinating wasps have been seen there as well. Thanks to Robyn and Josh for the photos and information.



***Chiloglottis valida* Common Bird-orchid**



***Chiloglottis trapeziformis* Dainty Wasp-orchid**



ANSWER to question p.1:
Perhaps because of this gorgeous chocolate cake Lyndy baked to celebrate Cam's 40th? birthday.



(Well he admits to 40 years of fighting to maintain the native flora and fauna of Warandyte State Park. Perhaps he started as a newborn babe).

Bird Orchids also feature in the Walert Creek Mullum Mullum Project

THERE ARE two 'target' species we wish to benefit at the Walert Creek grant site in Mullum Mullum Park - one is the Southern Toadlet, the other is the Mountain Bird Orchid *Chiloglottis jeanesii*.

Ever since we received news that we had won the grant, we have been looking for the orchid, because it is going to be easier to spot while it is flowering. One pair of eyes had found none, nor did we see it when Linda took lots of 'before' photos - photos to show what the grant site looked like before we began work there.

So, on a fine, cool Spring Thursday, an augmented TAG team trained nine pairs of eyes on the ground. I say augmented because Cathy Willis [Manningham City Environmental Officer] and her new colleague Sam Gilbert also contributed their expert knowledge.

We had resolved to concentrate on the orchid-search, and not to do any weeding; but how could a dedicated team of weeders resist? It turned out to be a useful departure from the plan, because the presence of pulled weeds showed that somebody had already searched that patch.

As it happened we did not find the orchid, however we had a very good sighting of a young tiger snake, coiled



Gray surveys the Walert Creek area.



neatly, sunning itself (Barry's photo left).

The pleasure of this outing was greatly enhanced by a delicious morning-tea made by Lyndy - even the mushroom flan stimulated a light-hearted conversation about fungi!

During the search Cathy phoned the legendary Cecily Falkingham, who apparently knows this part of the Park in great detail. Cecily has now kindly agreed to meet us in the Park on the 2nd of November!

Gray

***Ixia* a troublesome bulb in Frogland**



WHAT were those white and pink flowers bobbing amongst the native *Gahnia*? Definitely not a plant we want in Frogland. Without hesitating for ID I began to dig out the bulbs at the bottom of these flower stalks, a task made difficult by the fact the soil was dry and hard. Fortunately I was soon joined by Lyn and Alison and together we managed to remove all that we could see by the end of the morning.

On the same day Diane Silveri visited Frogland. She had memories of the rangers digging the original dams in the Frogland area and was positively impressed with the recent progress that has been made. She gave Marie a hand removing Yorkshire Fog from the upper pond.

Many thanks also to some extra help with weeding from TAGers (see bonus email page).

Linda

**Saturday 25 November Combined Event
with the Entomological Society of Victoria (EntSocVic)**

From 5:30 pm BBQ at the Folly BYO everything. Coffee and tea provided.

See what the EntoSocVic members have found at the afternoon event Spring Outdoors: The Great Aussie Insect Hunt

Hear about recent moth and insect discoveries made while light trapping in Victoria.

After dark observe light traps in action nearby and take photos if you wish.

This is a chance to get close and personal with insects and have Entomologists and enthusiasts to answer your questions.

Be sure to bring your own food and drink for the BBQ; wear closed-in shoes and **bring your own torch**.

Please RSVP by Thursday 23 Nov. to aid preparations: editor@fowsp.org.au or mobile 0491 112 692.



TAGS (Thursday activity groups)

**TAGS meet at the nursery at 9.00 am for a 9.15 am departure. Please remember to wear appropriate footwear and clothing for the weather, and please bring your own filled water bottle.
Contact number: 0408 317 327**

Thurs	Nov 2	9:00-12:00	Nilja	Woody weeding	Easy	FOWSP
Thurs	Nov 16	9:00-12:00	Whipstick gully	Woody weeding	Difficult	FOWSP
Thurs	Nov 30	9:00-12:00	Hill Birch Cottage	Weeding	Difficult	FOWSP

Difficulty ratings:

Easy: Even terrain, some light lifting, kneeling and bending involved. Few tripping hazards.

Moderate: Uneven terrain, light to heavy lifting, kneeling and bending involved. Tripping hazards present.

Difficult: Steep terrain, light to heavy lifting, working in over-grown areas and lots of bending. Many tripping hazards and slippery surfaces present.

Check the website for any changes at <http://fowsp.org.au/activities.php>

Please note TAGS and activities will be cancelled on Total Fire Ban days or when weather conditions are deemed hazardous.

FOWSP COMMITTEE 2016/17			OTHER FOWSP CONTACTS
Artur Muchow 0415 383328 artur@netspace.net.au	Secretary		Nursery Manager Josh Revell Nursery Phone 0408 317 327 email nursery@fowsp.org.au
Lynda Gilbert 9844 0106	Treasurer and Membership		Park Office 03 8427 2132
Linda Rogan 9435 5806 editor@fowsp.org.au	Newsletter editor		Newsletter assist and Librarian Gloria Moore 0402 285005
Annette Lion 0414-249-729	Facebook Coordinator		Wildlife Rescue Adriana Simmonds 9722 2908
Caitriona Young 9844 2842	Minute Secretary		
Gray Ardern 0418 190261			Market Trailer Jan Falconer 9844 1226 or 0419 872 096 email trailer@fowsp.org.au
John Blake 0418329 937			
Joy Hick 0418573916			Manningham Council Rep Cathy Willis 0427 660 651
Kelvin Watkins 0488 039 774			Webmaster Jason Patton 0402 121838 jason@parau.com
Carolyn Noel 0409 901 441			Website: www.fowsp.org.au
Jeff Cranston 0418 396 647 legality@bigpond.com	Advisor to the committee		FOWSP general enquiry number 1300 764 422

The views and opinions expressed in this publication are those of the authors, and do not necessarily reflect those of FOWSP

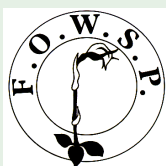
Newsletter Team this month: Linda Rogan, Gloria Moore
Mel Coupar (Line drawings)

Next Committee Meeting

Date: Tuesday November 14 2017

Venue: Education Centre, Pound Bend

Time: 19:30 pm sharp



FOWSP/Manningham Thursday nature walks

Leader: Cathy Willis



This series of free nature walks will explore various sections of the Yarra River from the eastern end of Manningham in Wonga Park downstream to Templestowe.

Each walk is paced to allow participants to enjoy and appreciate the natural beauty of the area. Please wear appropriate clothing for the weather including a hat and sturdy footwear. Bring a water bottle and snack.

9:30 am Thursday 23 November Grasses at Pound Bend Nature Walk Do all grasses look the same to you? Would you like to be able to tell a grass from a sedge from a rush? On this short walk at Pound Bend you will learn some of the common grasses.

Distance: 2km **Time:** 2.5 hrs **Rating:** Mostly easy with one short steep section.

All distances and finishing times are approximate.

Ratings:

Easy – Flat or undulating well formed tracks/paths with low tripping hazards.

Moderate – May include some moderately steep or narrow sections or have higher tripping hazards.

Difficult – Includes steep and/or narrow sections, slippery sections, or high tripping hazards.

Bookings can be made online and are essential as places are limited. Bookings open 2 months before the walk date. www.manningham.vic.gov.au/nature-walks

The meeting place will be provided at the time of booking.

Please note that nature walks will be cancelled on a day of Total Fire Ban or extreme weather warning as Parks Victoria will close all local parks.

FOWSP THURSDAY PROGRAM

We meet for propagation and other nursery activities every Thursday morning at 9.30 am at the Warrandyte State Park depot, Pound Bend Road, Warrandyte (Melway 23 C10), unless otherwise stated below. Propagation takes place from 9.30 am to 12.30 midday.

No prior experience necessary -

There is always someone available to show you the ropes.

NURSERY OPENING HOURS

The nursery is open for plant sales every Thursday.

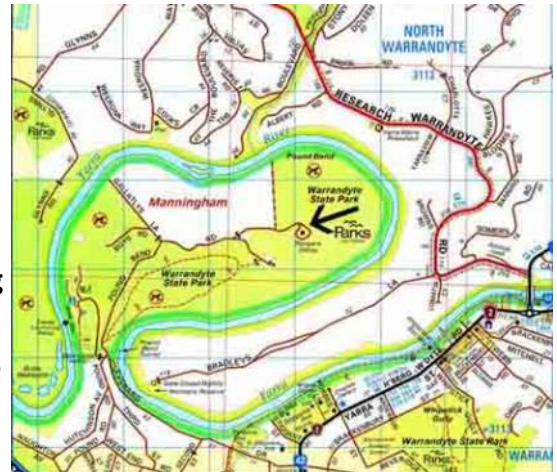
9.30 am to 12.30 pm and

the first Saturday of every month, 9am to 1pm (to coincide with the Warrandyte Market April to November only)

Closed between Christmas and New Years days, reopening 4 January 2018.

Also closed to customers and volunteers on days of severe weather and on Total Fire Ban Days

Prices: Members \$2.00 Non-members \$2.50



Copyright 2008 Melway Publishing Pty Ltd
Reproduced from Melway Edition 36 with permission

Manningham City Council Environment Seminars



The Environment Seminars are held on the first Wednesday of the month.

Many of the seminars will be complemented with field sessions to facilitate broader education on the topics. No bookings are required for the evening talks; however, RSVPs must be provided for the field sessions. Due to the popularity of the field trips bookings are limited to three field trips per person. You must attend the corresponding seminar to keep your field trip booking. **Bookings now open.**

Venue: Bull and Bush Room at the Grand Hotel, Warrandyte **Time:** 7.30 pm

Enquiries: Sam Gilbert, 9840 9326

Wednesday 6 December 2017 7.30 pm to 9.00 pm The brighter side of night: the ecological consequences of artificial night lighting **Dr Therésa Jones** Until very recently one of the constants for life on earth has been the presence of a bright day and a dark night. Since the advent of electrical night lighting, this has changed: nights are becoming increasingly bright and many species living in urban areas never experience a true dark night. Accumulating evidence indicates that this dramatic shift in the night-time photic environment in urban areas has a range of (largely negative) ecological consequences. Join Dr Therésa Jones as she explores the biological effect of artificial night lighting for physiology, behaviour and life-history traits using vertebrate and invertebrate models in the field and laboratory

FOWSP MARKET TRAILER

Thanks to those who helped out on Saturday 7th October
Diane and John Baird, Jeff Cranston, Kelvin Watkins
Christine Andell, Lyn Moore, Lyndy Gilbert and Ken Crook

Special thanks to **John Young and Kelvin Watkins** who transported the market trailer to and from the market.

The Warrandyte market is held on the first Saturday morning of the month from 8.30 am to 12.30 pm at Stiggants Reserve. Volunteers are rostered in pairs to (man/woman) the FOWSP information trailer for just one hour.

If you are interested in being on the market roster for December or 2018
please contact Jan Falconer 0419 872 096 email trailer@fowsp.org.au
First timers are always paired with someone more experienced.

Next market trailer dates are: Saturdays, 2 December 2017 and 3 February 2018



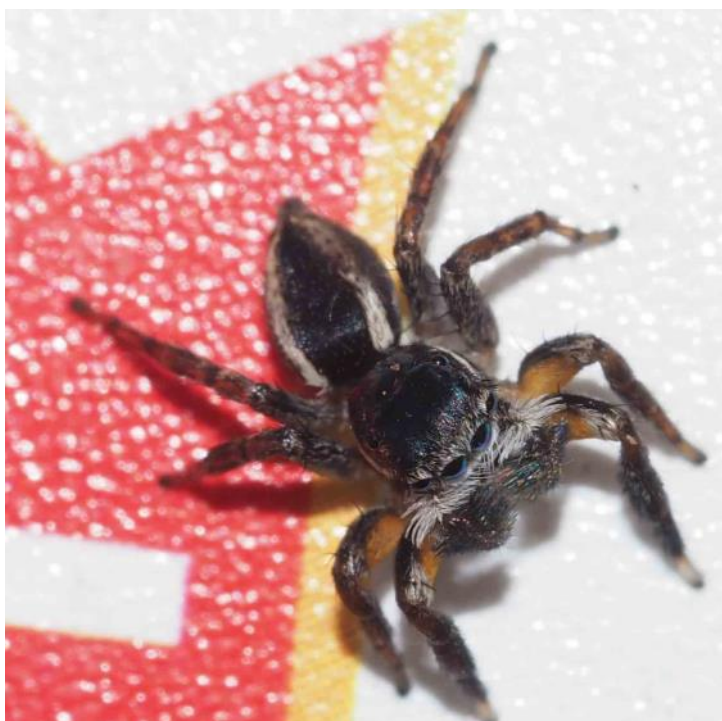
Hand Pollination of Native orchids

ON THE 19TH of October Dick Thompson demonstrated the technique of hand pollinating native orchids.



In nature *Pterostylis* are pollinated by small Diptera called fungus-gnats, *Chiloglottis* by wasps and *Diuris* by native bees.

Where orchids are few in number or pollinators are absent, hand pollination may help to increase the number of plants.



Page's Find (see page 1)

THIS SALTICID or jumping spider with a classic moustache jumped out of the leaf litter where Page was weeding in Frogland. It was quick but not quick enough to escape being photographed.



Sweet Vernal Challenge for New FOWSP Volunteer



THE TARGET weed on the day Ben helped us in Frogland was the aromatic but troublesome Sweet Vernal grass. Ben quickly became proficient in recognising and removing this troublesome weedy grass. It flowers in October and is much easier to find amongst the native grasses at that time (photo right).

Thanks Ben

Linda

October Sausage Sizzle



THE FOLLOWING people kindly assisted at the Goldfields in Warrandyte during the sale of sausages and plants on Sunday 1 October: Lisa Jenkins, Tony Oliver, Gloria Moore, Ken Crook, Lynda Gilbert and Herbert Bauer. Many thanks to all volunteers for their enthusiasm for the task and generous donation of their time. Thanks again to IGA for their continued support of our Warrandyte community through the provision of tables, gas bottle and bbq facilities outside the front of their store.

Income from plants & the BBQ as well as donations totalled \$418. Expenses for the bbq were \$58. A total of \$360 was made during the four hours at the shopping centre, despite it being the day after the footy Grand Final.

Our wonderful supporters, Fritz Uhl and Daniel & Marae Epstein purchased the majority of plants. *Lyndy*



Lyndy Ken and Herbert taking a break from sizzling. Thanks to Lisa for the photo

Enjoy great wine and help support Friends of Warrandyte State Park.

Learn more here: <http://goodwillwine.com.au/charities/friends-of-warrandyte-state-park>

FOWSP will receive a minimum of 50% of the profits resulting from your purchase- cheers to that!"



Cuckoos of Park Orchards



Horsfield's Bronze-Cuckoo, *Chalcites basalis*. Favourite species to brood parasite are fairy-wrens and thornbills.
Image: LE Chambers



Fan-tailed Cuckoo, *Cacomantis flabelliformis*. Favourite species to brood parasite are scrubwrens and thornbills.
Image: LE Chambers

BOTH birds hit windows at our house in Park Orchards in the early October. The Horsfield's Bronze-cuckoo was being chased by Little Ravens. Both rested briefly while I took these photos before flying off.

Lynda Chambers

Scotchman's Hill Action Group

THIS ARTICLE is about a new group that has started up in Warrandyte. The aim of the group is to use the Bradley Method of weeding to assist some of the local beauties that are present on Scotchman's Hill to thrive and propagate. At present the group is meeting on the hill (at the end of Magpie Lane) between 10 and 12 each Wednesday morning. Someone will be present to explain the Bradley Method, point out the more common weeds, and assist each participant to get started on their own small patch. If you can't make this time slot due to other commitments but you would still like to be involved, or if you just want to know more, please ring Carolyn (SHAG coordinator) for a chat or to arrange another time to go to the Hill to enrol and get started.

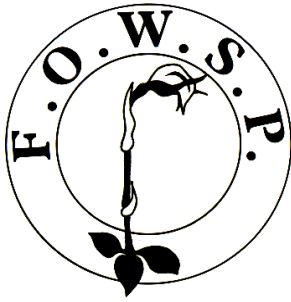


It is a great time to weed right now as many of the non-indigenous grasses are flowering and thus easily recognised.

The Bradley Method is a method of weeding that was developed by the Bradley sisters back in the 60's. It is a gentle non-intrusive kind of weeding that removes the weeds but does not disturb the soil. It assists native species by removing competitors but because the soil integrity is maintained weeds like thistles can't get a foot hold. It is slow and intensive but not hard. No digging or strenuous activity is called for—just patience, persistence and precision. Remarkable changes can be achieved with a minimum of effort. FOWSP has a little book in its library for anyone wanting to know more.

The photo (above) demonstrates a weed free patch that has been achieved with only 4 hours effort over the past year -one hour per season. It is now has baby *Hardenbergia violacea*, *Pimelea humilis*, *Burchardia umbellata* and lots of tiny sundews.

Carolyn



Print
Post
346802/0005

Postage
Paid
Australia

REGISTRATION BY AUSTRALIA POST
PP 346802 / 0005
If undeliverable please return to
Friends of Warrandyte State Park Inc.
P.O. Box 220 **Warrandyte, 3113**



Clematis aristata
Old Man's Beard or Mountain Clematis

Have you noticed the Clematis blooming on the front fence of Frogland? I have just learned that Clematis are dioecious with either male or female flowers on a plant. It is the female flowers that develop the long silky plumes that give it the additional common name of Goats Beard. I will have to take a closer look in the future to see the difference in the flowers.

It is found along the east coast from Queensland to Tasmania. In WSP it is found in Pound Bend and several other areas within the park.

November 2017 Vol. 35 no. 9

PLEASE CHECK YOUR ADDRESS LABEL TO SEE IF YOUR SUBSCRIPTION IS DUE

FOWSP Membership Renewal Form

Name

Address

.....

Telephone no.

Email

Membership (family) \$30
Concession \$15

Newsletter by email (tick box)

Send to: FOWSP PO Box 220, Warrandyte 3113 or renew on the website www.fowsp.org.au with the option of direct deposit payment.

This newsletter is printed on recycled paper

Email photo bonus page

Photos below and right are my photographic proof that weeding in Frogland is fun! Just ask Lyn, Alison, Robyn, Kelvin, Bruce, Gray or of course Marie. Clockwise below see the resin bee, one of the first this season at the bee posts, a very wet *Lasioglossum* bee on a Yam Daisy, a near adult spittlebug and a nymph spittlebug above. For more about spittlebugs see November WD. *Linda*



**Your photos can appear on this page (subject to space available) if you email them as follows:
editor@fowsp.org.au**