

# FRIENDS OF WARRANDYTE STATE PARK

Editorial

NEWSLETTER July. 1990



What's in a word? It can change its meaning depending on who uses it, and in what particular context. Words can be greatly influenced by repeated use in advertising, and become catch words when used by politicians, business men and media personalities.

A classic example is the word growth. Once it was used in connection with plants, trees, animals, children, crops, there the implication was a normal positive healthy and natural state to which we gave only a passing thought. In more recent times with increased useage by business corporations, economists, and politicians growth has been coupled with descriptive words such as positive, negative, sustainable, economic, and environmental. It still retained the illusion that nearly all growth was good, and there are no real drawbacks. The image is one suggesting a bright and shining future for society with its 'improved quality of life'. The corporate world has hooked the word 'sustainable' to growth to give it an environmental flavour, although originally coined to refer to sustaining the environment. Only negative growth is seen as dark and sinister, particularly by economists seeing it as a return to the dark ages with dirt floors and candles to light our tents.

Environmentalists are aware there are limits to growth, and that nothing can continue to grow for ever, be it people, plants, or G.N.P. Economists never take into account the costs that must be borne and evaluated in any growth process. They believe that any problems that will occur are predictable and will be solved by clever scientists. The myopia of the nuclear power industry is a good example of how poor predictions as to costs, and the frightening results of accidents that have occurred. It now appears in hindsight that nuclear power will not be the answer to replace the finite resources of the planet.

It seems important the economists and environmentalists need to work together in a cooperative mode, and not view each other as adversaries. Otherwise the words like growth, quality of life, standard of living, will be just that;- words.

'LIFE CONSISTS OF MOLTING OUR ILLUSIONS.  
WE FORM CREEDS TODAY, ONLY TO THROW THEM  
AWAY TOMORROW.  
THE EAGLE MOLTS A FEATHER BECAUSE HE IS GROWING A BETTER ONE.'

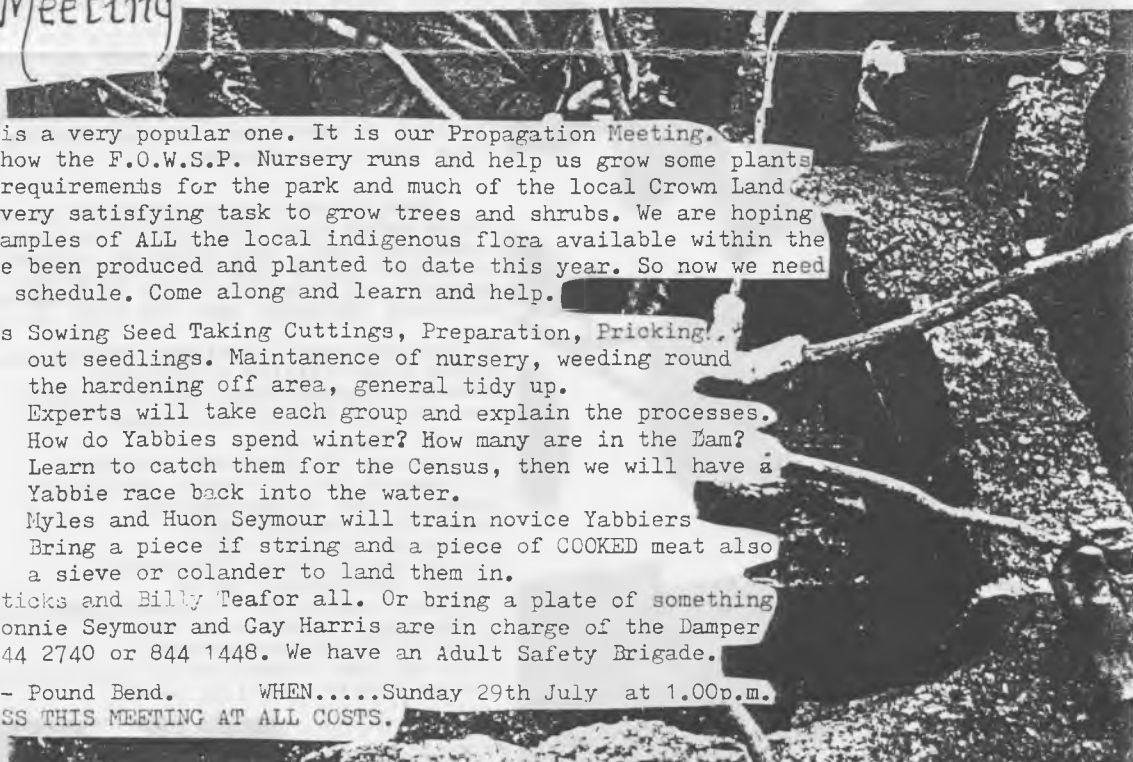
## Sunday Family Meeting

The next Family Sunday Meeting is a very popular one. It is our Propagation Meeting. Come along and learn all about how the F.O.W.S.P. Nursery runs and help us grow some plants for your planet. All the plant requirements for the park and much of the local Crown Land is met by our nursery. It is a very satisfying task to grow trees and shrubs. We are hoping to reach the stage of having examples of ALL the local indigenous flora available within the next 12 months. 3500 plants have been produced and planted to date this year. So now we need to get on with the Spring plant schedule. Come along and learn and help.

ADULTS.....Group activities Sowing Seed Taking Cuttings, Preparation, Pricking out seedlings. Maintenance of nursery, weeding round the hardening off area, general tidy up.  
CHILDREN....Yabbie Survey. Experts will take each group and explain the processes. How do Yabbies spend winter? How many are in the Dam? Learn to catch them for the Census, then we will have a Yabbie race back into the water.  
Myles and Huon Seymour will train novice Yabbiars  
Bring a piece of string and a piece of COOKED meat also a sieve or colander to land them in.

AFTERNOON TEA. Damper on sticks and Billy Tea for all. Or bring a plate of something to share. Nonnie Seymour and Gay Harris are in charge of the Damper  
Enquiries 844 2740 or 844 1448. We have an Adult Safety Brigade.

SO....WHERE...AT THE DEPOT - Pound Bend. WHEN.....Sunday 29th July at 1.00p.m.  
DON'T MISS THIS MEETING AT ALL COSTS.



Pat~y~pus Page

What do onions and asparagus have in common, apart from the fact that they are both vegetables? Angled Onion (*Allium triquetrum*) and Smilax Asparagus (*Asparagus asparagoides*) are just two of the major invasive weeds of the Warrandyte State Park. They thrive in the wetter areas particularly where the ground has been disturbed or vegetation removed. The white, bell-shaped flowers of the Angled Onion are just starting to appear, they look quite attractive rather like large snowdrops, but there the resemblance ends, the grass-like leaves have a pungent onion odour which makes this weed an easy one to identify. Smilax Asparagus, also known as Bridal Creeper, grows aggressively at this time of the year. This plant is a tenacious, woody climber, its bright green shiny leaves can easily be distinguished amongst the more subtle tones of the native vegetation, while concealed below the ground the horrific bulbous tubers spread like a mat over the roots of trees and shrubs.

A weed is usually defined as a plant growing where it is not wanted. This rather broad meaning may be interpreted in various ways; agricultural weeds are those that compete with crops, garden weeds compete with flowers, vegetables, Australian natives or any plant that has been grown by choice. As far as the Warrandyte State Park is concerned, any plant that is not indigenous (native) to the area may be termed weed. Weeds may be dispersed in a number of different ways; wind, water and animals especially birds which carry seeds in their droppings and have the potential to spread them far and wide. Seeds are transported in soil on the tyres of our cars and on the soles of our shoes, some, particularly grass seeds hook into our clothing or on to animal fur.

Any cleared area is an open invitation for weeds to become established and this often happens beside roads and tracks. Weeds are adaptable, grow vigorously and outcompete many natives for moisture, nutrients and light, eventually creating unfavourable conditions for the original vegetation and the associated native animals.

Warrandyte has its fair share of weeds or pest plants as they are sometimes called. Many, particularly when in flower, are stunningly beautiful such as the Cootamundra Wattle. This is one of the first to flower, its delicate feathery-grey foliage is almost obscured and the tree nearly weighed down by the magnificent fluffy golden blooms that brighten up even the dullest winters day. But the lovely Cootamundra is a weed. Originally from a small area in New South Wales near Wagga Wagga, it is extensively sold in nurseries and has become an extremely popular garden plant. However, some garden plants have a habit of escaping. Seedlings of this wattle are sprouting up regularly in many areas of the State Park. According to Leon Costermans (Native Trees and Shrubs of South Eastern Australia), this tree has been known to hybridise with the native Silver Wattle (*Acacia dealbata*). If this is the case then it is cause for concern for here in Warrandyte the Silver Wattle is a common tree especially along the river banks.

So what can we do to prevent this army of weeds advancing further into our native bushland? The "Friends" group, with guidance from the rangers work tirelessly to remove Ivy, Cape Broom, Pittosporum and Pines from the State Park and recent Ivy pulls have shown we are achieving gratifying results. In addition there is much we can do as individuals; we can learn to identify the most troublesome weeds so that we can recognise and where possible remove them from our property, a high priority for any private land adjoining the State Park. We can make friends and neighbours aware of the weed problem and advise and encourage the Bradley method of weeding. This approach favours hand weeding with minimal disturbance, where practicable and working from good areas of native plants towards the weed infested areas. We can dispose of garden rubbish thoughtfully, preferably at an authorised tip.

Horse riders need to be particularly diligent when in the State Park and use only the wide tracks recommended as Bridle Tracks, because horse droppings are yet another source of weedy, pasture grass seed.

Weeds have become a problem ever since the first white settlers came to Australia over 150 years ago, bringing with them seeds of fruits and flowers to remind them of home. Now more and more people are becoming aware of the threat that weeds pose on the natural environment and "Friends" groups are getting together in many areas to join the the battle in the fight against these unwelcome invaders.

Some of the problem weeds of the Warrandyte State Park are listed below with their country of origin. This is by no means a complete list, more detailed information can be found in the Warrandyte State Park Draft Management Plan. There are also several good books available on weeds and how to control them including 'Bringing back the bush' by Joan Bradley.

Smilax Asparagus ( <i>Asparagus asparagoides</i> )	South Africa
Angled Onion ( <i>Allium triquetrum</i> )	Mediterranean
Boneseed ( <i>Chrysanthemoides monilifera</i> )	South Africa
Blackberries ( <i>Rubus fruticosus</i> )	Europe
Willows ( <i>Salix</i> spp.)	Europe
Pittosporum ( <i>Pittosporum undulatum</i> )	East Gippsland VIC.
Cootamundra Wattle ( <i>Acacia baileyana</i> )	Wagga Wagga NSW.
Monterey Pine ( <i>Pinus radiata</i> )	U.S.A
Cherry Plum ( <i>Prunus</i> spp.)	Europe
Cape Broom ( <i>Genista</i> spp.)	South Africa
Spanish Heath ( <i>Erica lusitanica</i> )	Spain, Portugal
English Ivy ( <i>Hedera helix</i> )	U.K
Japanese Honeysuckle ( <i>Lonicera japonica</i> )	Japan
Cotoneaster ( <i>Cotoneaster</i> spp.)	Europe
Hawthorn ( <i>Crataegus monogyna</i> )	Europe
Wandering Jew ( <i>Tradescantia fluminensis</i> )	South America
Various grasses and flat weeds	Many parts of the w

## Preamble to your Mystery Reporter's Research/Report

It finally had to happen. Organised activity and plotting - in the 'State'. Your mystery reporter was brought in from outside the 'STATE' to ensure independence, integrity, incorruptability, reliability, honesty, clairvoyancy (amongst other modest attributes).

AND he has uncovered intrigue, connivance, conspiracy etc.

The major members of this 'syndicate', quietly going about their nefarious deeds, and operating without publicity or scrutiny are:- Located in the Warrandyte STATE Park.

Your fearless reporter has a 'hit list' and if justice, morality etc. is to be served a profile of each of these mysterious 'associates' will be in the FOWSP journal at regular intervals.

I re-iterate - threats, extortion, kidnapping, ravaging, pillaging notwithstanding, even bribes (well - maybe - not) your mystery reporter will be on the job. The atavistic deeds of the following (names are pseudonyms, acronyms, aliases and mnemonics) will be under the spotlight:

(i) Kelvin  
Craig  
Mark  
Nicole  
Paul

(ii) C & M rejects  
Brian  
David  
Ian  
Doug  
Stephen

(iii) Margaret  
(iv) The total membership of F.O.W.S.P.  
(v) All C.F.L.  
(vi) The world

Wait and see!

First off the rank - is Doug.

They seek him here

They seek him there

Your intrepid reporter sought him everywhere

Is he in heaven? Is he in hell?

That damned elusive - Doug Cordell

Disguised as a National Parks Ranger, Doug recently celebrated his 40 plus birthday (years, not Kg!). Born in Brighton, schooled at Hailebury College from 'prep' to 'matric', Doug intended to be a 'vet', but a misunderstanding of the 'fr' area meant that this was not to be.

He spent time as a Customs agent, a radio announcer at Ballarat 3BA, was involved in stage and drama activities and took part in a T.V. CRIMES series (Consider your Verdict).

After various other intrusions into the workforce Doug worked on the family farm at Macclesfield - beef, fat lamb, horses and mixed farming.

A few years later Doug joined the Federal Force in Melbourne. He eventually transferred across to the Fisheries and Wildlife Department for more personally rewarding work and a career with the environment. For 17 years with F & W he was involved in such diverse areas as research and law-enforcement. (According to independant sources he carried off a successful coup or two!) and was stationed at Kerang for a while and worked in many areas of the state.

At this point in the interview there was a ten minute interval whilst Doug had a phone call arranging improved equipment for vehicles. Your ever watchful reporter noted many books on his shelves, such as - personal sets of Victorian Statutes, Oxford Dictionary, Field Guide to Wild Flowers, Field Guide to Trawl Fish, Legal Resources Book, Radio Operators Manual etc.

Doug claims his hobbies are wiid-life photography, camping - just returned from 4 months around the big half of Australia, Radio Ham VAX 727 etc. and of course Rosemary (they've been together for 15 years and have two daughters, Louise and Sarah. Doug and Rosemary's main hobby is still the 'old' family farm. They have a dog (named Bandit for allegedly obvious reasons).

His weakness is really radio and electrical toys?, but he is rapidly developing an interest in computers - has just completed a course on "Introduction to Disc Operated Systems (D.O.S.). He likes classical/folk/jazz, modern but not rock music. His favourite radio program is Australia All Over. Other hobbies are beach fishing and four wheel driving in his Toyota Troopie.

His favourite T.V. shows - comedies such as 'Yes Minister', current affairs etc. He is a lapsed deer hunter. Favourite food - Tucker. Favourite drink - natural products such as cider and wine. Eye colour - brown/hazel.

When asked why the C.F.L. appealed as a career, Doug replied that he believes in realistically managing the environment and habitat with law- enforcement as a valuable tool, as well as through education and actual management.

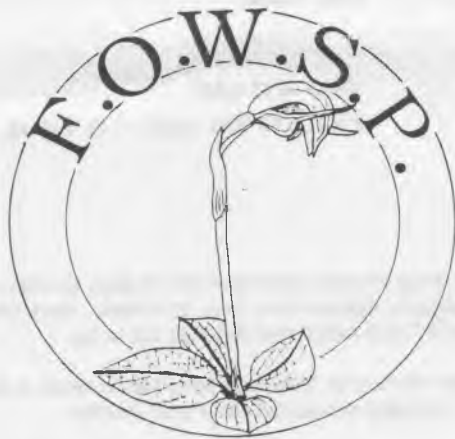
He dislikes "selfish, unnecessary over-utilisation spurred on by pure greed. Conservation is a compromise between man's modern needs and the overall needs of the environment - he is a firm believer in re-cycling.

Finally your reporter discovered that Doug likes golden delicious apples - well, doesn't that lead to intrigue and deep contemplation?

THE  
M  
Y  
S  
T  
E  
R  
Y  
R  
E  
P  
O  
R  
T  
E  
R  
?



Melanie Coupar has designed these four beautiful logos for production as badges pendants key fobs ect. Glenn Henke our own Master Jeweller has offered to make the dies and create the pieces. The previous Logo was not suitable without modification (Mel has done that) and the idea for the opportunity for some change was mooted. So here we are.....and Glenn can produce the designs in the metal of our choice. Next step is to show him and the membership Mel's designs and get some feedback from YOU. No costing has as yet been discussed but we feel it will be a wonderful way to raise some funds as well as provide a beautiful Fowsopian piece. Enquiries Burkes 844 1060 Coupars 8441650 Henke



## WARRANDYTE DIARY JULY EDITION

# Outcry at delay on charges

## FIRST SOCIAL EVENT

Gay Harris has asked us to mention that she is organizing a table at the forthcoming musical evening (to benefit the Council election candidate, Louise Joy).

### MUSICAL EVENING .....

featuring many of Warrandyte's most talented performers ..... Libby Skeels, Mandy Stevens, Alan Cornell, Bob Egglestone, Doug Macrae, Jock Macneish ..... BYO drinks and nibbles: coffee and cakes provided. WAA/WMI Hall Friday 27 July 8 p.m.

Tickets \$10 Bookings, Gay 844 1448 (home)

Doncaster and Templestowe City Council's reluctance to take punitive action over the clearing of native bush on a Warrandyte property has angered local environmentalists.

Instead, council officers are assisting the owner of Lot 3B Nelson Road, where about four hectares of bush was cleared, to adopt a landscape plan to revegetate the area.

The owner was granted a planning permit on March 9, 1990, to clear Landscape Interest A zoned land for buildings. But local environment groups were shocked at the extensive clearing, including 1000 square metres of adjacent Warrandyte State Park.

The Friends of Warrandyte State Park and Warrandyte Environment League urged the strongest action against the clearing, by council and the Department of Conservation and Environment, and local MLA Phil Honeywood raised the matter in Parliament.

The department has launched prosecution proceedings against the owner under the National Parks Act 1975.

But the council, at its meeting on July 3, deferred a decision on prosecuting the owner until its next meeting. This was to see if the final landscape plan for the property satisfied Warrandyte ward councillors, council officers and the Department of Conservation and Environment.

Ward councillors Val Polley and Vern Denford spoke strongly about the land clearing and pointed out that the community "was not happy and particularly with what appeared to be council's role in the matter."

Cr Polley said that she and Cr Denford felt there had to be stronger action against the owner of the cleared land.

Council wanted the decision on prosecution to hang in the balance to ensure the owner, who appears to be co-operating, does satisfy community demands to make good the damage. Cr Polley said after the council meeting.

"There seems to me that we can draw more into the plan in the areas of revegetation, soil conservation, supplementary planting and what to do with the cleared bush."

Friends of Warrandyte State Park coordinator, Margaret Burke, said the council's decision not to initiate prosecution proceedings showed it was not prepared to protect critical areas.

"This particular block of land in Landscape Interest A zoning was really precious. The wildlife is destroyed," she

said. "You can't just say you're sorry and come up with a native garden plan."

"For example, the Rock Curlew is unique in that area. Probably hundreds were destroyed in the land clearing. The landscape plan for the property has just six Rock Curlews in the plant list."

"The numbers of plants on the plan are ridiculous and there are great swaths of grass. It's hardly a natural concept."

The council's group manager for development control Paul Molan told the *Diary* that there was a general misunderstanding in the community about prosecution.

"The council can prosecute for an offence under the Planning and Environment Act and have a fine imposed in the Magistrate's Court, but the court cannot require any work to be carried out on the land," he said.

"The council and the community have to decide what is the more important issue in this case — to have the land reinstated or to have the person who has carried out the offence fined," he said.

"Council has taken the view that the most important thing is to have the land reinstated. You can't have both."

"We're trying to negotiate the revegetation of the land. What we're saying to him is that if it can all be done without going to the Administrative Appeals Tribunal, then that's the way we would prefer to handle it."

"What we want to do is involve Conservation and Environment, ward councillors and anyone else who would like to have a say in the discussions on the way the revegetation should occur," Mr Molan said.

"It may be that we can't come to an agreement with the owner in relation to the revegetation of the land. If that happens, then that's when we'll go to the Administrative Appeals Tribunal for an enforcement order."

"We feel we would be successful with that order if the person did not comply with the enforcement order, then that's when you would prosecute. The fines for an offence against an enforcement order are much heavier than what they are for an offence of just clearing land."

Mr Molan said a Section 173 agreement under the Planning and Environment Act would bind the present owner and any future owners to the revegetation plan for the property.

He said the project of reinstating the land with indigenous plant would take some time because of the need to collect and propagate seed. It would probably take two years.

# Hot House Gossip and Cold Things.



A Building Sub-Committee has been formed to help proceed with the building of "The Folly". Interested members speak to Ian Burke or Alec Manson. Lots of building and Renovating of the Nursery is proceeding on Thursdays. All helpers welcomed. Currently we are building a fence around the new hardening off area. A load of gravel is being waited upon so as to resurface the work area which does get a little "soggy".

The shade house is gradually being refilled with plants. Lots of helpers are needed on Thursdays. Bring lunch and have a really enjoyable day helping. NO EXPERIENCE is necessary - first job you get is pot-washing as you listen/join in the Fowspian Gossip Group! We are enjoying the company of several people who come on their R.D.O's!

Olive Walters is giving up her Golf to attend the C.O.D.A.T. Open Spaces Workshop at Currawong Park. Look forward to hearing all about this innovation on Councils part. What is economically viable open space?

Roches are away on Annual Leave at present. Always miss "Mick" and Gail but staff are doing well. Read all about 2ic Doug Cordell.....!

We are extending a special invitation to the Friends of the Helmeted Honeyeater and other groups associated with Healesville Sanctuary and the setting up of a Nursery similar to ours to attend our next meeting. Member in common, Pat Madely, has begun "training" on a Thursday (when she's not in hospital!) We hope you learn a lot and have a beaut day.

Editor Ian Burke is hoping to start up a "Words to the Wise" column. Sort of like "Access Age" - short pieces no more than 50 words. He failed in his effort to provide inspiration for the local Essayists.....DON'T MISS THIS OPPORTUNITY!

The Friends congratulate Garry McKelvie and Helen Fraser on the arrival of Lauren Kimberley. Amelia will be very pleased to have a sister to share her sand pit. We look forward to a meeting some time soon - maybe at the W.E.L. tent. Garry of course is the President of the Warrandyte Environment League for the uninitiated.

Yes it really is true.....Margaret and Ian Burke were married on 1st. July - at home.

Gay Harris has been unable to evade the net of Maggie Burke....She has agreed to become our Social Secretary. We are planning to have a presence at some of the local Warrandyte Arts and Drama Scene. Can't have it said that local Greenies are suffering from "mossy grey-matter" or having "all their taste in their compost bins"! So come the next Drama Group Production.....!

Phill Honeywood, our local M.L.A., suggests that as many people as possible write brief letters to Steve Crabb AND the Doncaster/Templestowe Council regarding the illegal clearing at Lot 3b Nelson Rd Wonga Park. It is unbelievable that no prosecution seems likely by the Council. What happens next time someone does this type of thing?

As we are not a political lobby group we are not endorsing any candidates for the local council elections. We do hope people are able to find candidates who are environmentally sensitive. It is at this local level that development is able to be contained and the last vestiges of "Green Wedge" be protected and maintained.

Don't forget next month we are having our Folk Music Concert in the old Skip Moyle Hut. Big clear/clean up and weed first. We also plan to do a little repair and maintenance.

Market Stall has a whole new feel with the success of our Roster. Each person spends an hour on and we hope to make it more attractive Display wise - any ideas? If you wish to be added to the roster phone Marg Burke 844 1060.

The trips Doug Seymour was organising will have to wait....the Seymours are about to head off overseas....to the U.S.A. in fact. Will call and see Bill Price in San Francisco. Bill planted a couple of gums (E. Polyanthemus and E. Rubida) when he visited Warrandyte last Autumn. The Eucalypts are doing fine.....Will hear all when they return.

We are awaiting comment about our Badge/Pendant design. Melanie Coupar has a fine career ahead.

Pat Coupar Page

What do onions and asparagus have in common, apart from the fact that they are both vegetables? Angled Onion (*Allium triquetrum*) and Smilax Asparagus (*Asparagus asparagoides*) are just two of the major invasive weeds of the Warrandyte State Park. They thrive in the wetter areas particularly where the ground has been disturbed or vegetation removed. The white, bell-shaped flowers of the Angled Onion are just starting to appear, they look quite attractive rather like large snowdrops, but there the resemblance ends, the grass-like leaves have a pungent onion odour which makes this weed an easy one to identify. Smilax Asparagus, also known as Bridal Creeper, grows aggressively at this time of the year. This plant is a tenacious, woody climber, its bright green shiny leaves can easily be distinguished amongst the more subtle tones of the native vegetation, while concealed below the ground the horrific bulbous tubers spread like a mat over the roots of trees and shrubs.

A weed is usually defined as a plant growing where it is not wanted. This rather broad meaning may be interpreted in various ways; agricultural weeds are those that compete with crops, garden weeds compete with flowers, vegetables, Australian natives or any plant that has been grown by choice. As far as the Warrandyte State Park is concerned, any plant that is not indigenous (native) to the area may be termed weed. Weeds may be dispersed in a number of different ways; wind, water and animals especially birds which carry seeds in their droppings and have the potential to spread them far and wide. Seeds are transported in soil on the tyres of our cars and on the soles of our shoes, some, particularly grass seeds hook into our clothing or on to animal fur.

Any cleared area is an open invitation for weeds to become established and this often happens beside roads and tracks. Weeds are adaptable, grow vigorously and outcompete many natives for moisture, nutrients and light, eventually creating unfavourable conditions for the original vegetation and the associated native animals.

Warrandyte has its fair share of weeds or pest plants as they are sometimes called. Many, particularly when in flower, are stunningly beautiful such as the Cootamundra Wattle. This is one of the first to flower, its delicate feathery-grey foliage is almost obscured and the tree nearly weighed down by the magnificent fluffy golden blooms that brighten up even the dullest winters day. But the lovely Cootamundra is a weed. Originally from a small area in New South Wales near Wagga Wagga, it is extensively sold in nurseries and has become an extremely popular garden plant. However, some garden plants have a habit of escaping. Seedlings of this wattle are sprouting up regularly in many areas of the State Park. According to Leon Costermans (Native Trees and Shrubs of South Eastern Australia), this tree has been known to hybridise with the native Silver Wattle (*Acacia dealbata*). If this is the case then it is cause for concern for here in Warrandyte the Silver Wattle is a common tree especially along the river banks.

So what can we do to prevent this army of weeds advancing further into our native bushland? The "Friends" group, with guidance from the rangers work tirelessly to remove Ivy, Cape Broom, Pittosporum and Pines from the State Park and recent Ivy pulls have shown we are achieving gratifying results. In addition there is much we can do as individuals; we can learn to identify the most troublesome weeds so that we can recognise and where possible remove them from our property, a high priority for any private land adjoining the State Park. We can make friends and neighbours aware of the weed problem and advise and encourage the Bradley method of weeding. This approach favours hand weeding with minimal disturbance, where practicable and working from good areas of native plants towards the weed infested areas. We can dispose of garden rubbish thoughtfully, preferably at an authorised tip.

Horse riders need to be particularly diligent when in the State Park and use only the wide tracks recommended as Bridle Tracks, because horse droppings are yet another source of weedy, pasture grass seed.

Weeds have become a problem ever since the first white settlers came to Australia over 150 years ago, bringing with them seeds of fruits and flowers to remind them of home. Now more and more people are becoming aware of the threat that weeds pose on the natural environment and "Friends" groups are getting together in many areas to join the the battle in the fight against these unwelcome invaders.

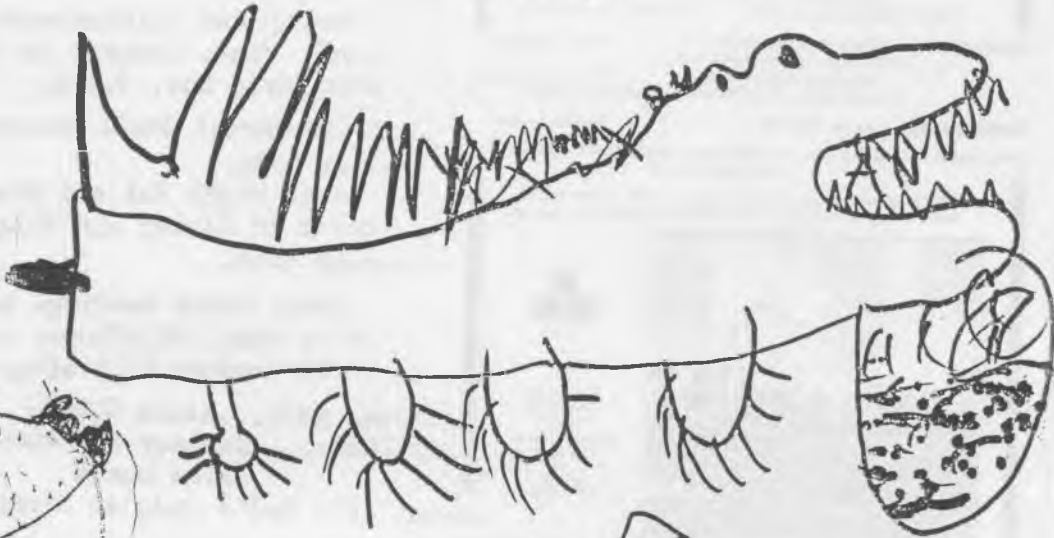
Some of the problem weeds of the Warrandyte State Park are listed below with their country of origin. This is by no means a complete list, more detailed information can be found in the Warrandyte State Park Draft Management Plan. There are also several good books available on weeds and how to control them including 'Bringing back the bush' by Joan Bradley.

- |  |                     |
|--|---------------------|
| Smilax Asparagus ( <i>Asparagus asparagoides</i> ) | South Africa        |
| Angled Onion ( <i>Allium triquetrum</i> )          | Mediterranean       |
| Boneseed ( <i>Chrysanthemoides monilifera</i> )    | South Africa        |
| Blackberries ( <i>Rubus fruticosus</i> )           | Europe              |
| Willows ( <i>Salix</i> spp.)                       | Europe              |
| Pittosporum ( <i>Pittosporum undulatum</i> )       | East Gippsland VIC. |
| Cootamundra Wattle ( <i>Acacia baileyana</i> )     | Wagga Wagga NSW.    |
| Monterey Pine ( <i>Pinus radiata</i> )             | U.S.A               |
| Cherry Plum ( <i>Prunus</i> spp.)                  | Europe              |
| Cape Broom ( <i>Genista</i> spp.)                  | South Africa        |
| Spanish Heath ( <i>Erica lusitanica</i> )          | Spain, Portugal     |
| English Ivy ( <i>Hedera helix</i> )                | U.K                 |
| Japanese Honeysuckle ( <i>Lonicera japonica</i> )  | Japan               |
| Cotoneaster ( <i>Cotoneaster</i> spp.)             | Europe              |
| Hawthorn ( <i>Crataegus monogyna</i> )             | Europe              |
| Wandering Jew ( <i>Tradescantia fluminensis</i> )  | South America       |
| Various grasses and flat weeds                     | Many parts of the   |

Can you identify these weeds?

# Percy Possum's Picture Parade

Bearded Dragon



Grey Koala in a Tree



Mother Bird with her Nest

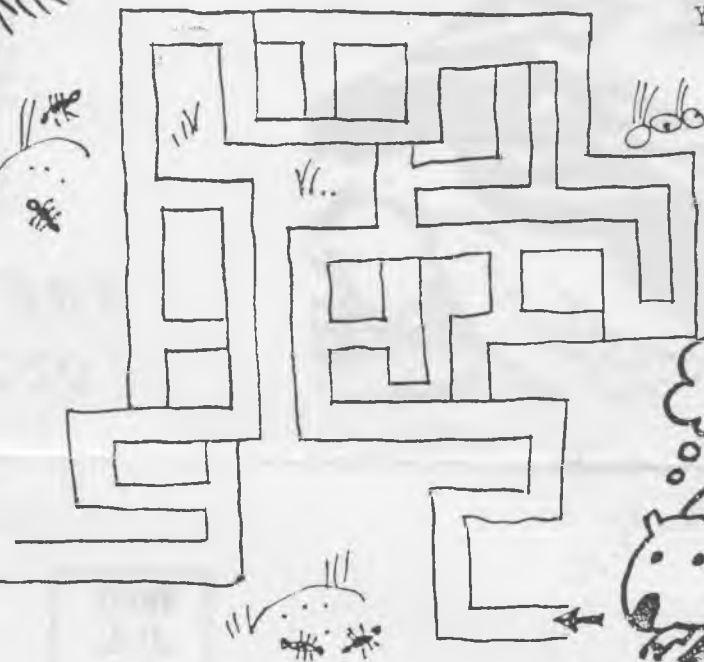


Short-haired Echidna



You can colour Ryans Pictures.

Help winnie Wombat find her way home.



If you have a picture, joke or story for Percy or Penny send it to P.O. 220.

ANNUAL MEMBERSHIP

NAME..... ADDRESS..... Enquiries 844 1060.

Family Members.....

..... P/C .....

Family Subscription : \$10.00

PHONE NUMBER.....

I also enclose .....donation.

P.O. Box 220 WARRANDYTE 3113

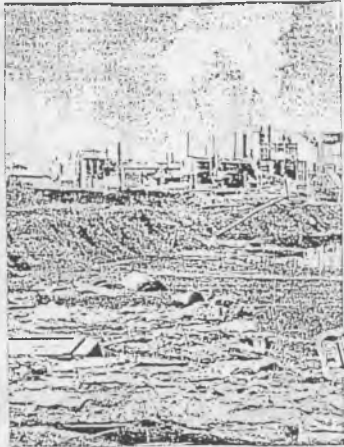
1990 Public Meeting: "Waste Management"  
Thursday, 16th August, 8 pm  
Eltham Community Centre (Off Pitt St & Main Rd)

- Speakers:
- Peter Brotherton (A.C.F. Councilor) - will primarily address Industrial wastes
  - Michael Hill (Brunswick Council) - will speak about local government and community initiatives

Introduced by: John Graves (Eltham Council)

Procedure: After the two main speakers have spoken, a panel will address questions from the floor

The Panel will include the above speakers, plus a representative from a local group concerned with the Kangaroo Ground Tip proposal



For further information contact  
Paula Stillman (439 1870)  
or  
Jan Lauri (439 3560)

Welcome  
from Diana Poyada

# Dates for the Calendar

August 26th...

Clean up and maintenance Black Flat. Concert in the Skip Moyle Hut. B.B.Q.

August 4th Market Stall Stiggants  
September 28th.

Slide Night Pat and Mike  
What's in Flower and Flight.

September 30th.

Stony Creek Weeding- meet  
Gad's Gang. Wildflower walk  
at Professors Hill after.

October 28th...Koala Count.

Every Thurs....Nursery at Pound Bend  
Bring Lunch

August 12th Gad's Gang at Stony Creek

Society for Growing Australian Plants  
Maroondah Inc.

## THE MELBOURNE WILDFLOWER SHOW

Victoria's Largest  
Display of Wildflowers

10am - 5pm  
Saturday 11th August, 1990  
Sunday 12th August, 1990

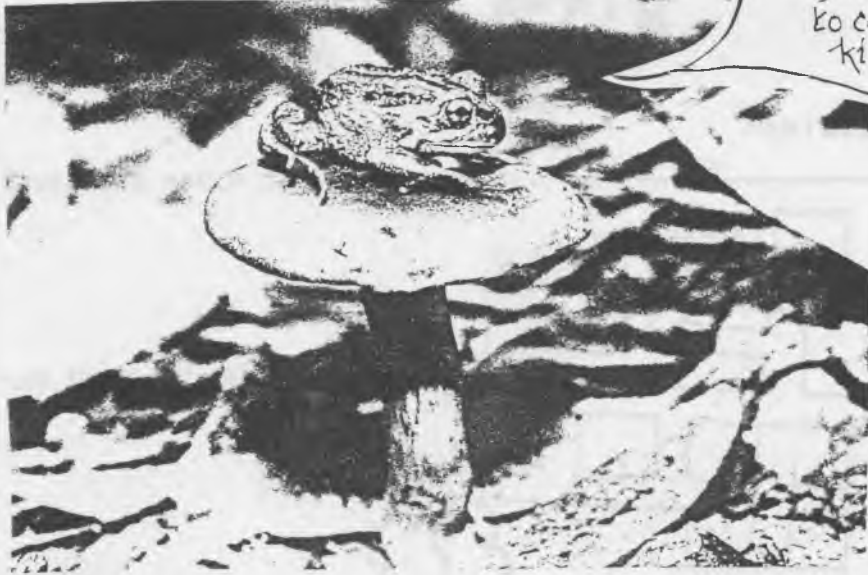
- Meet Stan Kelly & Jane Edmanson, Roger & Gwen Elliot.
  - Cut and dried flowers for sale
  - Flower & foliage displays
  - Book sales
  - Environmental displays
- Advice on:
- Growing & caring for Australian plants
  - Propagation
  - Garden problems



### PLANT SALES

Adults \$4.00. Pensioners \$2.00. Children under 12 FREE. All children receive a free plant.  
Ringwood Convention Centre  
Mines Road, Ringwood Enquiries: Telephone 870 5201 • 879 9190

I'm just waiting  
for that Princess  
to come along &  
kiss me!



### COMMITTEE

- MARGARET BURKE Co-ordinator 8441060
- DOUG SEYMOUR Secretary 84427
- ANNE BEDFORD Asst. Sec. 43832
- GAIL ROCHE 72219
- OLIVE WALTERS 84647
- IAN BURKE..Editor 8441060
- Judy THOMSON Treasurer 8441590
- MARK GARDNER Group Advisor 844379
- TERRY OAKLEY 6764768

P.O. Box 220.  
HARRANDYTE. 3113

