

# FRIENDS OF WARRANDYTE STATE PARK NEWSLETTER



FEBRUARY 1992

Editorial

As we launch ourselves into 1992 it is incredible to reflect on some of the massive changes that have occurred on our fragile planet. If someone told you three years ago that Germany was to be reunited, the Berlin Wall would come down, Russia would discard Communism, that the Cold War would be ended, America would be at war with Iraq, you would be forgiven for thinking they had lost some of their marbles! Yet all these things had become realities.

These important events were to cause changes both economically and environmentally not just initially but for many years to come. The reduction of the threat of war will change nations priorities for spending money and using natural resources in wasteful ways. Problems of agriculture, production and distribution will take on a different perspective.

Some changes not nearly so recent as these have been around for the last 100 years. The rapidly increasing world population. The numbers increase in the following way. If you take the last two digits of the year (92), that multiplied by 1 million, that will be the increase for 1992. The following year it will be 93 m. and so on. At the moment there are already many millions starving in the world but not in the newspapers where only dramatic recent events help to sell newsprint.

By contrast, in this country we are suffering from a recession along with many other developed ones. The causes of our small decline in standard of living has been variously stated to be due to other countries economic policies, our local political leadership, trade unions and dozens of other theories.

Perhaps what is forgotten has its roots in the very beginnings of the white man coming to this land. The country was and still largely uninhabitable. The parts that would support human existence were altered to support exotic crops and many introduced animals. It is of interest that land clearing today is continuing at the same rate as it was 30 years ago. The other important factor is population increase. At 17 million plus we can not be self sufficient. Apart from control of population there is an urgent need to develop greatly increased energy production that is efficient and environmentally sound. Solar/Hydrogen could eventually be an answer.

It is to be hoped that our political leaders can come to understand the more important causes of our malaise rather than patching up the results.

"To eliminate the needless,  
and keep the good is the  
problem of growth & progress."

E. Hubbert

"All things come to those  
who hustle while they wait!"

Henry Ford I.

"Some people live as if life  
is a vacation, others live  
it as a vocation."

R. Schuller.

"The only right you need is  
the right to be useful."

E. Hubbert.

Mixed Bouquet

23rd FEB. SUNDAY FAMILY DAY...IVY PULL, HISTORY WALK, AFTERNOON TEA AT BIMBADEEN, "JAZZ IN FOYER".

Well its "Ivy-time" once more....and on Sunday 23rd Feb at 1.00pm. we will see you all once more for action along Andersons Creek and up through Wildcat Gully. A good turnup will see all (?) of the unwanted vine nicely bagged up and carted off by the park staff. Bring along gloves, wear socks and suitable footwear. We hope a couple of hours pulling will about do it.

THEN THE TREATS.....

We will be guided up the hill past the mines etc. by local historian John Hanson who has often regaled us with tales of the Goldmining days. We will then visit Bimbadeen Nursery and have afternoon tea with the Hansons, and a guided tour of the Nursery which has developed greatly since our last trip. Many of you will have spent much time with Jenny (Hanson) Drummond who has been a "regular" of a Thursday. They have both tube size and 6" pots of indigenous plants. Bring.....a plate of something to share for afternoon tea.....THEN if you want MORE..bring

Organisers...Keith Thom 844 3527 Brenda Hunter 379 7375



AFTER THE IVY PULL...BRING A PICNIC TEA AND COME ALONG TO "JAZZ IN THE FOYER" at the Community Centre..... Picnicers will be able to enjoy the gardens we all worked on planting last year. AND we can check out what needs doing there and at the Mechanics Inst. over the road.....Hope you all can make it.

# JAZZ IN THE FOYER

AT WARRANDYTE COMMUNITY CENTRE

SUNDAY 23RD FEB 6.00-8.00 PM

AN EVENING OF CONTEMPORARY LYRIC JAZZ FEATURING

## THE LISA YOUNG ENSEMBLE

PLAYING ORIGINAL MATERIAL COMBINED WITH CHOICE STANDARDS

BYO-with tea coffee cheese and biscuits provided

Enquiries

Pam Eggleston

844 2714

ADULTS \$5 FAMILY \$12 CONCESSION \$2

Alan King

844 3622

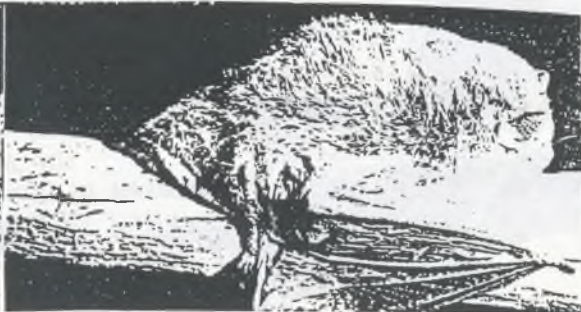
Louise Joy

844 3600



A.G.M...HILDEBRAND AUCTIONING ALL THOSE ADVANCED PLANTS....A GREAT SUCCESS AND TO BECOME AN ANNUAL EVENT. THANKS TO ALL WHO HELPED.

### JANUARY 26 th. SPOTLIGHT WALK.



Our Australia Day spotlight walk and B.B.Q. meeting was a very quiet affair the attendance being 16 adults and 4 children. The kids did some yabbing in the dam and caught the impressive total of 98 in the space of two-hours. Those who came early had a very special treat by accompanying the Rangers who were setting up the bat traps. They have recently started a survey of the various species in the Park. It will enable them to provide a favourable habitat for their protection. The Friends who came along to see this special event were fascinated with the complex trap design. Once back at the depot we relaxed over a B.B.Q. dinner and the children then cooked damper over the open fire.

Awaiting nightfall we decided to remove fire damaged tree guards and replace them with new ones. Neil and Betty showed us the progress of trees and shrubs in the new coups of the Orchard where many plants are now thriving and should do well if we control the weeds.

Finally we went off on our spotlight walk and were fortunate enough to see a rare Powerful Owl chick trilling to its parents to come and feed it. (they eat Ringtail possums) and further along the track we counted six Ringtails, one Brushtail, one Koala. When we came to the bat traps there was one in each trap- an Eptesicus vulturnus and Eptesicus sagittula. We were able to examine them carefully before releasing them on the night air.

Everyone thought it was a wonderful experience.

Reporter : Gail Roche.





## Hot House Gossip

December/January activities were really well attended. The Nursery was "packed" on most Thursdays and the Yabbies have been well and truly "surveyed". We love to see people who are usually unable to attend Thursday activities on holiday or "days off".

Market Stall Roster is pretty flexible but we do need more helpers. An hour is all you need to give...means such a lot you know! No experience necessary because an "old hand" will be there. So please phone Marg or Gail....or just come.

The Park currently has a Science Officer. His name is Matt White and we are organising ways of helping with his survey work. Sadly he is only here for 6 months, so we hope we are all able to achieve much.

Another newcomer to the Park Staff, but not a stranger to F.O.W.S.P., is Virginia McCallum.

Virginia was a Ranger for a short period two years ago and we are pleased to have her back. Her job is Land For Wildlife Officer. Many Fowspians have wished to register their properties as Land For Wildlife but processing their applications had come to a halt. Virginia will have an article for our next Newsletter to fill you in on the advantages of the scheme. If you are already informed and eager, see a Committee Member or the Park Office for an application form. The success of the scheme in the next 6 months is crucial - though it has been widely accepted in country areas....Warrandyte can only benefit so get your Land For Wildlife Brochure soon.

F.O.W.S.P. would also like a Park Care Officer to be appointed to Warrandyte and we have hopes that our encouragement will see D.C.E. make this move in the near future.

Wonderful to welcome David Van Bockel, our Friends Ranger back after 6 months in at Head Office. He has been very much missed, especially by the Propagators. Many times we called and he gave up his own time to solve a problem, resolve a dilemma, or join in activities. Steve Anderson and Mark Gardner have also both been away so times have been tough for the F.O.W.S.P.

The trapping and identification of Bats in the Park is something the Rangers are currently doing. We have seven so far identified species and it would be wonderful to come up with some extra unsuspected species in these surveys. Those members who were with "Mick" Roche on the spotlight walk were able to meet several of these delicate denizens of the dark.

**OWL WATCH???????** Joy Hildebrand would like to hear from any members who think they have spotted or heard any of the owl population. She is especially interested in any Sooty or Powerful Owls. The Sooty Owl has a distinctive "mask" and is VERY thinly spread. If you have any information please phone her on 844 2638.

The most interesting things are happening "botanically speaking" to the area which was burnt during last years bushfire. We have several local Pelargonium species and several Geranium species growing prolifically which is quite unusual. Now all are being propagated and will be available for planting out in Autumn.

The "Flora of Melbourne" has been delivered and is now being well used at the Park and away from it. It was a very limited edition so if you want one get on to the S.G.A.P. or phone Flora Anderson for HELP....722 1776.

Over the January period we had a couple of very cheerful and willing older scouts helping us out. Gus and Tom were doing a practical voluntary project for 30 hours to obtain a final Environment section for qualification as Queen Scouts. They did a great job of weeding at Stoney Creek and we enjoyed their cheerful help and company for two normal Thursday Propagation Sessions at the Nursery. We wish them both well.

The "Folly" is now almost finished....just the guttering/tank installation and stove to be plumbed, the "patio" levelled and paved and a second window box and we will be able to have a final inspection. Of course it is in constant use and a great asset to both F.O.W.S.P. and Park Staff in general. Wonderful job Alec, Ian, Jim, Andy, Ben, and of course Bill Roxburgh for keeping an eye and ear on the lads! Ahhh! do you all remember the days when our only shelter was the poor, late-lamented Euc. nicholi?

Make sure you take the years Programme to your calendar or diary and note all the planned activities. DO REMEMBER that other impromptu or extra meetings will no doubt be added to our year so make sure the Newsletter is read with care each month. Some folk grizzled about missing out on the Spotlight Walk in January....BUT....they had only themselves to blame!

The Market gives us the opportunity to offer the service of Plant Identification (fresh or pressed specimens of reasonable size) and Registration of Fauna sightings. We hope to also make a register of significant plants.....more later. See you at our Stall.

Those interested in helping at the Festival or with the Float please phone Gail Roche during the weekend or evenings...722 1926.....HELP NEEDED!



EVERY WEEK...RAIN, HAIL or SHINE.....

Nursery Activities - every Thursday 10 am onwards. Nursery upkeep, propagation, guided walks, survey of flora and fauna, tree planting, direct seeding, all kinds of activities. Bring your lunch, tea provided. No experience needed.

PROGRAM FOR 1992

January 26	Interps day. Picnic tea at Pound Bend at 6 pm. Spotlight walk with Ian Roche.	G. Roche J. Thomson
(to be announced)	Slide night in the Scout Chapel at Blue Tongue Bend with Neil Archbold on 'Insects'	M. Burke .....
February 23	Ivy Pull at Wildcat Gully/Gold Memorial Drive. Later, a history walk with John Hanson and tour of Bimbadeen Nursery	B. Hunter K. Thom .....
March 28 & 29	Warrandyte Festival Wetlands/Orchard Plans display	M. Burke I. Roche
April 12	Visit to Kinglake National Park	G. Harris G. Henke S. Mandemaker
April 26	Track Maintenance on Jumping Creek Nature Trail	M. Gardner Riddell Bros.
May 11 - 17	Arbour Week with all local schools	J. Hildebrand
May 31	Nursery Day Proagation Direct Seeding	Olive, Pat, Neil, Margaret
June 5 - 7	World Environment Day	
June 28	"Fire" - History and Management Tour Speaker and Guide	J. Tindale
June	Stoney Creek Progress Walk and Talk	M. Gardner
July 26	Tree Planting in the Orchard	H. Hagen
August 30	Broom Pull at Yarra Brae followed by a walk.	G. Roche, Flora(?)
September 27	"Frogwatch" - Guest speaker Survey at 9 locations	P. Coupar M. Coupar
October 25	Koala Survey. Afternoon tea to follow.	B. Hunter & Family
Nov. 8 or 15	Spring Clean the River by Canoe with B.I.C.A.	D. Seymour
November 29	Annual General Meeting	J. Thomson O. Walters P. Coupar

Activity with Friends of Yarra Valley Metropolitan Park

YEAR ROUND ACTIVITIES - Warrandyte Market Stall, first Saturday of each month. People are needed to staff the stall, please volunteer to Margaret Burke.

Townscape plantings...to be advertised in the Newsletter....with Jane Marriot and Bev Hanson. Community Centre and the Mechanics Institute Hall gardens.

Each meeting will have a small team of organisers to make the day go smoothly and ensure an enjoyable experience for all. Judy and Gail set a VERY high standard of efficiency for Jan. DESPITE having a lovely time. We do need some more hands for March, May, July, August, September, October so why not team up with a friend and have your turn at keeping the show on the road. Lists of tasks and a "How to" sheet is available. If you enjoy FOWSP activities and wish us to continue to thrive Marg Burke would be so pleased to hear from you. 844 1060

And by the way...Most family subscriptions are due. We really run on a shoestring so to speak and nobody could complain about value for money...Activities, 10 Newsletters and a free exchange pot for plant at every Warrandyte Market, and the added bonus of membership of a wonderful organisation. So \$10 it remains (we wish to be accessible to all) HOWEVER should you be inspired to make an added donation thus enabling the sky to truly be the limit, we will pop it into Treasury and use it wisely and well.



Welcome to our new Butterfly, Shirley Makdemaker. Shirley is taking over from Gay Harris and will be organising our social events for 1992. She would be very pleased to hear from anyone with suggestions for 'fun' times we can have together. Shirley is planning tables for all of the drama productions at the Mechanics Institute hall so get in early to make sure of a place. Here is the first one:

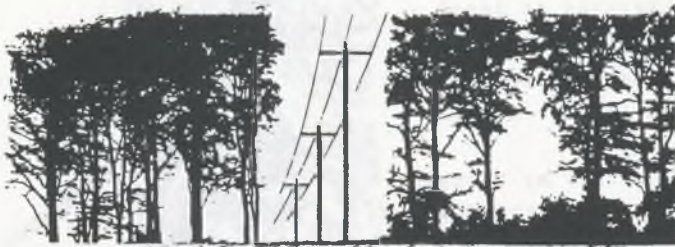
## Butterfly Drawing

Keep a night free at the end of March. The FRIENDS are organizing a table for the FESTIVAL FOLLIES - don't miss out on a great night's entertainment. More details in next month's NEWSLETTER.

Lorraine Elliott, candidate for the new seat of Moorlabark, drew our Christmas hamper and the lucky winner was: Val Riddell, a member of the Riddell family who have always strongly supported our activities over the years. Congratulations Val - a well deserved win! Val was very very excited about winning - he said he never won a competition of any sort before. Thanks to all those who contributed items to the hamper and a especial 'thank you' to Harry Heaths Supermarket who supplied the basics.

Peter Pan and Wendy attracted quite a few Fowspians. The production was excellent and acting - with all the cast below the age of 20, were as professional as one could ever want. The youngest member of the audience (Margaret's 15 month old niece, Lily) was entranced, not once taking her eyes off the stage! A lot of Fowspianites are eagerly awaiting this year's pantol!


New Years Eve was celebrated in the Skip Moyle Scout Hut at Black Flat in spite of the storm raging outside. As the rain pelted down upon the tin roof, those snug inside imbibed, feasted and cavorted around the cosy fire. Bill White and his ingenious spit roast (made mostly from old washing machine parts, we surmise) cooked a 'done-to-a-turn' saddle of beef which was enjoyed by all. Keep in mind for the end of this year, its a fine way to see in the new year!



Neal Tessier 844 3763  
Joy Hildebrand 844 2638

*Nth. Warrandyte*

*Tree Clearing*



SEC

### CODE OF PRACTICE FOR **TREE CLEARING**

CLEARANCE OF TREES FROM  
ELECTRIC LINES AND  
PRIVATE ELECTRIC LINES

1992

SECTION 65  
STATE ELECTRICITY COMMISSION ACT 1958

WHAT ARE THE S.E.C. DOING TO OUR VEGETATION?....F.O.W.S.P. especially the Burkes, have received so many calls from UPSET (to say the least!) residents of Nth. Warrandyte about problems with the S.E.C. Tree-logging Brigade (OR BRIGANDS!) absolutely devastating both roadside verge AND PRIVATE land. STOP the owners cry!....and the reply is that the S.E.C. has commissioned this crew to cut back for three years growth under or near powerlines. We are astounded to see just how far this crew seem to think our vegetation can possibly grow in that space of time. Some species completely removed and stumps poisoned are among the slowest growing of all our plants. Trouble is most folk haven't even had time to protest! SO....LEARN YOUR RIGHTS. We have copies of the S.E.C. Code of Practice and advise you to PROTEST. Ask for a Botanist to be called to survey the vegetation to be removed. Insist that Mr. Hedrick, Manager of Ringwood District be sent for before another branch is chopped...Phone 871 0410.....DIG YOUR HEELS IN.....Neal Tessier and Joy Hildebrand have copies of your rights, phone them for advice (Joy 844 2638) S.E.C. Botanist Alan Noy was able to assess significant flora and they were saved, so ask for him to be sent out. We hope to set up a register of Significant Trees and Vegetation.....please notify the State Park Office or F.O.W.S.P. Rare and Significant trees must be cut by a qualified Tree Surgeon.

MORE NEXT NEWSLETTER.....DON'T BE FOBBED OFF.



Warning - travelling can be addictive! I caught the bug a long time ago and its been with me ever since. When travelling in Australia you become aware of the incredible diversity and adaptability of our native flora and fauna. Sometimes finding familiar plants and animals in unfamiliar places gives a different perspective to our well-known and loved Warrandyte environment.

Recently we visited the forests of East Gippsland in the vicinity of the Snowy and Roger Rivers. We set up camp in a remote region of the Snowy River National Park. Relaxing by the camp fire, I was conscious, for the first time, of a very familiar sound coming from nearby trees. It was the 'ping' 'ping' of bellbirds. After a day of travelling over 400 kms, this was a pleasant, but unexpected reminder of home.

Over the next few days I came across other reminders of Warrandyte: flowers such as Blue Pincushion, Rice Flower, Grass Trigger-plant and Vanilla Lily. I also saw Sweet Pittosporum; this plant is a serious invasive weed in Warrandyte. But in these great forests of Eastern Victoria it is indigenous, growing naturally in damp gullies and I had to resist the urge to pull it out.

The Snowy River National Park is an isolated area of rugged bushland, almost twice the size of Wilsons Promontory, through which the beautiful Snowy River has cut a deep valley. For most of its course, the river is broad and shallow with wide sandy beaches, but in several sections it narrows dramatically to form steep gorges and rocky cliffs.

There are few access points in this middle section. However, we did reach the river eventually by following a dirt road called the Yalmy Rd and then a very steep and rough 4WD track. The final few metres of this track forged through dense thickets of tangled blackberries at least 3 metres tall. To find the blackberries in such a remote region was a huge disappointment, as were the willows we encountered near the water's edge. Despite these intrusive aliens, it was still an idyllic place where peace and tranquillity pervaded.

I lay on the soft sand and closed my eyes. For a while my thoughts returned to Warrandyte and our own Yarra River. Once, a long time ago, it too ran clear and clean like the Snowy and even now there were similarities between the two rivers. Neither runs free - both have their headwaters impounded by a dam; massive man-made structures that reduce the rivers' flow by at least half; and, despite their vastly different locations, both rivers have major weed problems.

It is an ironic twist of fate that many rivers and creeks, like the Yarra and Snowy, carry the seeds of their own destruction and that their banks provide a fertile footing for many weed species. In Warrandyte, due to the relatively small area of the State Park, Staff numbers and an active 'friends' group, we are able to gain a measure of control over many of the weeds. I would like to think that the Snowy River National Park also has 'friends' to care for it, but it is just too remote. It is this very remoteness that gives the area its wilderness quality and makes it an awe-inspiring place to visit. The Snowy River is one National Park that should be on the itinerary of any nature lover.

It's not just a river  
It's one of a kind  
It's freedom you're killing here  
In the waters that you bind  
We're not fools who stand here  
We are everyone  
I swear The Franklin is the face  
Of things to come

Ian Paulin 1982

- a protest song about the impounding of rivers

# Reflections on Reflections

## TRAVELLING

By Pat Coupar



*Bursaria spinosa*



## mystery Reporter

Your Mystery Reporter returns, having rejected tantalising job offers from Mr G. Bush, Mrs B. Windsor and an unnamed ex-Federal Treasurer. The Mystery Reporter prefers to be with people who do the real work.

This interview is with last year's 'Works and Equipment Manager' and this year's 'Treasurer' of FOWSP (same person). It took place in the 'Folly' building near the dam, whilst the interviewee was tiling around the sink and putting wooden rails in front of the windows.

Born in Brunswick, Alec went to East Brunswick State School, then Moreland Central and completed his education by correspondence "because I was flat on my back for five years - polio - there was a big epidemic around that time, 1937". Under these difficult conditions Alec gained his Intermediate Certificate.

Whilst he had polio he was in Stonnington for eighteen months. It has been converted to a hospital for the epidemic. He was also in the 1st Stonnington scouts, a group for polio sufferers.

Alec then started work with Taylor Surgical, working at surgical instrument making - a small, but highly skilled area. He studied the standard Fitting and Turning course at Brunswick Technical School for at least four years (at night school, four nights a week - "the rest of the time is your own!")

He left Taylor's Surgical after five or six years. - "The 'game' fascinated me so much I had every intention of continuing in it, but it was clear to me that one day electrical applications would move in, so at that point I managed to get a job at the S.E.C.'s laboratory at Yarraville. I worked in the 'fine mechanisms department' then after more night and day study at R.M.I.T. I moved into the 'electrical instrument shop'".

After five years or so with the S.E.C., Alex moved on the 'Peter Mac', i.e. Peter MacCallum Clinic, a branch of the Cancer Institute and remained working in that field till his retirement.

His job was designing and manufacturing any equipment (that was not commercially available) to meet the needs of the radio-therapists, other medical staff, and researchers in various departments.

When he started there was just himself and an apprentice. When he left he was the Supervisor of the Technical Services Workshop, in charge of tradesmen and other ancillary staff. He went to Tasmania once or twice as part of the job.

As a boy Alex was briefly involved with amateur theatrical groups such as the Savoy Light Opera Company which met at the Savoy Theatre (Russell Street, City) as a chorus boy and was for many years in Royal Victorian Leidertafel which met in the Atheneum Theatre. He is now an active member of the Box Hill Choral Society. Alex is a "first/second Bass".

He was the youngest in a family of two boys and two girls. He has three children, two sons and a daughter and seven grandchildren - one of whom was helping out at Warrandyte State Park last year on work experience. He enjoys food - no favourites. He enjoys most vocal musics, watches the news on T.V., and reads the Age.

Alec built his house at Warrandyte and a 'shanty' at Queenscliff, did a 'bit of sailing' - had a Mirror, some walking - he was recently out on Sugarloaf Dam (Winneke?) helping his son sail the Mirror. He also had a canoe for some years and canoed on the Yarra (a sixteen foot Canadian).

He spends Thursday mornings (fairly early start, MR) working on the Folly whether woodwork, frames, lining, windows, painting, sink installation, tiling etc. and has been assisted at times by Jim Turner who did an especially good job on the floor pavers amongst other jobs, Ian Burke, and more lately Andy Walters, very occasionally Ben Gotlib and one or two other sundries.

Alex drives a white Subaru Station Wagon, generally seen with a ladder on top and his tools inside. The Subaru - "a marvellous car, I got a quarter of a million kilometres out of the first one, that's why I bought the second one".

When asked how he came to join FOWSP Alex said "walking through the Market one day Margaret Burke caught my eye and once that happens ..... well ....."

The Mystery Reporter probed deeply, but few personal statistics about Alex came to light. We don't know his height or weight, but you will see him generally in overalls working at the Folly.

He denied any involvement with nefarious deeds or suchlike.

By the way he is Treasurer for FOWSP for 1992 and says subscriptions are due as it is the start of the year.

WARRANDYTE ENVIRONMENT LEAGUE.....INVITES ALL FOWSPIANS TO.....CLEAN UP AUSTRALIA DAY  
WHEN....MARCH 1st.....AT 10am.....SUNDAY.  
WHERE.....MEET AT THE BRIDGE. You will receive instructions, bags, etc.  
BRING....B.Y.O. B.B.Q. or Picnic lunch for afterwards at Stiggants Res.  
ENQUIRIES....844 2403 ALISON FISHER.



# A New Way with An Old Enemy

## Mechanical Suppression of Allium Triquetrum using Carpet Underlay - by Mark Gardner

Three years ago I embarked on the task of controlling Allium Triquetrum by mechanical means. The idea of using carpet underlay came to me while doing house renovations.

With the assistance of FOWSP, DCE and Eltham Council I was able to acquire large quantities of kemp underlay, newspaper, pine mulch and native mulch.

To start with it was important to know the lifecycle of Allium Triquetrum. Being a bulb (food storage organ), at the beginning of the growing season the plant calls on the stored food to produce leaf, root and flowers. During this process the bulb is exhausted, after seed is set the plant then reverses the cycle and begins to store food in the bulb for the next season. This is done by pulling food from the green leaf matter down to the bulb. With this knowledge I planned my assault.

The idea was to remove as much as possible of the green leaf and flower before the seed set, then smother to prevent regrowth and in turn reduce the ability of the bulb to store food.

I tried a number of different smother techniques, all involving slashing first:

1. Thick newspaper, 6 sheets at least and pine mulch 50 mm thick. Limited success due to number of over-lapping joints where the plant found its way through. This resulted in continual follow up, pulling and mulching.
2. Underlay with dense planting, every 300 mm. Good result but follow up required due to weed growing through holes for planting.
3. Underlay only. Good results with a 50 - 80% reduction in weed numbers in first season. Follow up of slashing and either more underlay or mulch or (preferably) both.
4. Underlay with 50 - 75 mm native mulch. No regrowth after 4 months, still being monitored.

All sites were in a similar area alongside Stoney Creek, Warrandyte.

It is important to choose a site or sites which are of a size that can be worked easily not putting too much demand on valuable volunteer labour. It is also important that the site will be recolonised by indigenous rather than another weed.

Sites I chose were 4 metre by 6 metre approximately, bordered by remnant bush vegetation and dotted with poe spp. clumps, acacia anserinifolia, (bidgee-widgee), Prunella vulgaris (self heal), etc.

Underlay comes in many different types - hemp, horsehair, combination and one with a nylon mesh through it. The nylon will not break down so looks ugly unless covered with mulch. Also they come in a variety of thicknesses, the thicker the better. Underlay cuts very easily with household scissors.

Insect and worm activity is very noticeable on soil surface just below underlay.

*Themeda triandra*

GAD'S GANG.....

Every SECOND Sunday of the Month at 9.30am. Meet at Stoney Creek and join Mark for an interesting and rewarding morning. Enquiries Mark Gardner 844 3799

### BOOK UPDATE

Our book "Discovering Warrandyte" is nearing completion. The word processor and editors are dotting "i"s and crossing "t"s as most of the writing is finished. Our graphic artists have completed most of the drawings and our colour photographer has exposed lots of films, so we can add splashes of colour onto the front cover and throughout the book.

For further information ring Mike Coupar (Chairman of book committee)  
844 1650



# 'Fossicking Ross & Percy Poss'

## WHAT WILL I GROW INTO?

Join up the small animals and plants with the adult ones.

Tadpole.



Egg.



Seed



Caterpillar.



Plant.



Butterfly.



Frog.



Bird.

Answers: Tadpole-Frog. Egg-Bird. Seed-Plant. Caterpillar-Butterfly.

## HOLIDAY HAPPENINGS

### Yabbie count.

The yabbie population is rising and a record of 189 yabbies were caught on one Thursday morning by Annie and I, and for the first time in the F.O.W.S.P. dam a small turtle was seen but not quite caught.

### Tawny frogmouth.

One day while I was riding alongside the Yarra river by the island I stopped to lift my bike over a fallen log, when I saw a strange lump on a stump. I walked over to have a look at it and it was a large bird (a Tawny Frogmouth). I noticed it's wing was bent and broken so I went home and came back with Mum and a box. I found it again in the water so we put it in the box and took it to the vet. The vet had a look at it and took an x-ray, but the wing was too badly broken so he had to put it down. He is now lying in peace in our freezer in case the State Park wants to stuff it and put it on display.

Ross and Percy would love to hear from any of the Fowspianmites with a story or a picture puzzle, joke or game to share with us all. Write to them care of P.O. Box 220 Warrandyte 3113

Please fill in the membership details and send with a cheque to P.O. Box 220 Warrandyte Membership entitles you to a Free Indigenous plant at each Market and to also be able to join in all of our activities

### DETAILS OF MEMBERS....

Names of all family members.....

Please include children's ages and special interests

Address.....

Family Subscription \$10

.....P.C.....

Telephone.....



Dates for your Calendar.

EVERY THURSDAY.....10am. Bring lunch. Nursery activities, walks, survey work, seed collection  
All welcome, no experience necessary.

February 23rd....Sunday Meet at Gold Memorial Car Park....to end at Webb St. Ivy Pull  
visit to Bimbadeen Nursery. History Walkalong the way.

23rd....Sunday Jazz in the Foyer. Meet us for a picnic tea. 5pm.....8pm  
Community Centre, Yarra St.

March 3rd.....Tuesday 7.30 Committee Meeting. Park Office.

7th.....Saturday 9.00...Community Market Stiggants Res. Volunteers required.

7th-8th. Newsletter Copy Deadline.

8th. Sunday 9.30am. Gad's Gang at Stoney Creek.

Volunteers preparing for Warrandyte Festival.....Enquiries Gail Roche 722 1926.

28-29th. Sat-Sun. WARRANDYTE FESTIVAL. Rostered members for our Tent/Display.

April 12th....Sunday 8am Bus trip/visit to Kinglake National Park...Friends of Kinglake  
and Friends of the Lyrebird to show us around etc. More in March.

AUTUMN TREE PLANTINGS....Thursdays/Dates to be advertised.

Festival.....Follies at the Mechanics Institute.....F.O.W.S.P. Night out. Butterfly will  
give details. Next Newsletter or 844 1895.

#### Committee

Margaret Burke.....Co-ordinator 844 1060  
Ian Burke.....Editor..... 844 1060  
Gay Harris.....Secretary.... 844 1448  
Alec Manson.....Treasurer.... 844 2557  
Pat Coupar..Propagn.Publicatton. 844 1650  
Judy Thomson....Asst. Secretary. 844 1590  
Gail Roche.....Crafts Festival.. 722 1926  
Olive Walters...Propagn.Nursery. 846 4729  
Mark Gardner.....Groups Advisor 844 3799  
Joy Hildebrand..... 844 2638  
Shirley Mandemaker.Social Sec... 844 1895

Goodenia ovata

P.O. Box 220, Warrandyte



SURFACE  
MAIL

POSTAGE  
PAID  
AUSTRALIA

REGISTERED BY AUSTRALIA POST  
PUBLICATION No VEH 90 6982

If undeliverable return to  
Friends of Warrandyte State Park  
P.O. Box 220

WARRANDYTE 3113