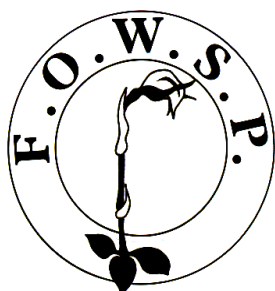


Friends of Warrandyte State Park



Newsletter

Website: www.fowsp.org.au

Friends of Warrandyte State Park (FOWSP) Inc. PO Box 220 Warrandyte 3113
ABN 94170156655/ACN A0024890C

Editor's Corner

DESPITE the hot, dry conditions in February and a closure on a FIRE BAN day, work at the nursery has continued apace. Seed sorting (right) and orchid re-potting has involved many. See photo below and page 4 for orchid action and species.

Cool off with Pat and Mike Coupar on Lord Howe Island on page 2.

But the heat has been on for our rangers and fire crews. Janaya tells part of their story on page 3.

This month pages 8 and 9 have photo essays on some of the Warrandyte State Parks small creatures and a summer visit to Glynn's wetlands.



Just in time, Kel's comments have arrived from the nursery. She reminisces about her childhood and then brings us back to the nursery on page 7.

We look forward to receiving your contributions by 22 March as listed below.

The end of the month has brought welcome rain. Hopefully our fire fighters can relax as well. Enjoy the rain and the newsletter. *Linda*



Caitriona has asked me to point out that the small bush bird listed on p. 2 last issue, as "White-faced Honeyeater, should have been the White-naped Honeyeater. LR

Deadline for April 2013 edition newsletter is

Friday 22nd March 2013

contributions can be emailed to Linda Rogan lindarogan@netspace.net.au
or posted to PO Box 220, Warrandyte 3113



Swimming with Turtles

By Pat Coupar

THESE DAYS it seems that the only time I contribute to the newsletter is when I have been swimming with a marine animal. First the sea lions in SA, then the whale sharks in WA and here's another one – this time in NSW.

Lord Howe Island (LHI) is a micro jewel in the vast blue Pacific Ocean. Yet it is less than a two hour flight - in a turbo prop Qantas Dash 8 that holds a mere 30 passengers – from Sydney. Being a World Heritage listed island has resulted in the population being restricted to about 360 residents and a maximum of 400 tourists at any time. There is no mobile reception, no power or telephone lines, no hi-rise buildings and the only cars there must travel at no more than 25 km/h.

LHI is all about enjoying nature at its most pristine. Many species of the flora and fauna are endemic and in that respect the island is akin to the more famous Galapagos group of islands. Fourteen species of sea-bird breed on LHI including the Red-tailed Tropicbird, Black and Brown Noddies, White and Sooty Terns and the Masked Booby. In addition, the marine species of fish and coral are superlative.

But it was the turtles that gave us the biggest highlight on this our second visit to LHI. Coming over on the plane, somebody (who had been to the island 17 times before) mentioned to us that Green Turtles came into the shallows at one particular beach. Their presence is not guaranteed and there is no set time when they might appear. It is not advertised and there is no tour or guide to see them – just as we like it. We feel strongly that wherever possible nature should be a personal discovery.



So, armed with snorkel, mask and fins we cycled down to the said beach. It was close to high tide and to our delight there in the shallow aqua water was a dark shape moving slowly. We entered the water carefully, not wanting to scare the turtle away. But it was unafraid as we swam alongside. With Mike on one side and me on the other we accompanied this graceful, gentle creature as it made its way leisurely along the bay parallel to the shore. Every now and then it surfaced for a breath of life-giving air. We were so close we could have stroked its glistening

honey-brown shell and its wing-like flippers, but of course we didn't touch it. Occasionally the turtle pecked at the sand or sea grass for a morsel of food. At any time it could have turned for deeper water and sped off. But it chose to stay in the shallows, unconcerned by our presence.



In the end, after traversing the whole length of the bay, we decided to turn back. Once again the experience of sharing time with a wild animal in their world was exhilarating. The trust given to us by this turtle was overwhelming, made all the more special by the fact that this time it was just the three of us – Mike, me and the turtle.



Fighting fires 2013

By Janaya O'Dempsey

MIDDLE YARRA-WARRANTYTE work centre staff have been involved in many fire activities throughout the last few months. We would like to thank all of you for ongoing support and patience through this time. Keep up your good work.

The staff involved have included Project fire fighters (PFF's), Field service officers (FSO's) fire crew, Rangers, Ranger in Charge and Business services officer (BSO).



Night photo at Licola. East metro crew back-burning .



Firebirds, cooling down some hot spots within the fire the 2nd or 3rd day of deployment. "The days run together in memory."

Aberfeldy complex.

As works continue in these campaign fires, crews are constantly being rotated, rested and managed for fatigue, so bear with us for just a little longer. Along with the fires that Middle Yarra staff have attended there are many other major fires around the state that may require our resources into the future such as the Grampians, Harrietville, Swifts Creek and the catchments to name a few.

While there are a number of crews away there are still staff carrying out regular park management duties and supporting those staff that are away.

Again we thank you for your patience and support and encourage you to stop by and check in with anyone in the office, if you have concerns.

Roles in the fires have ranged from support and logistics, assistance to other organisations (MFB/ CFA) and on-ground field work: (burning, blacking out, off-siding machinery, asset protection etc).

Fire sizes and ignition have been varied. Some fires have been started by arson or accidentally via farm machinery, escaped camp/cooking fires, lightning strikes and some are still under investigation.

Middle Yarra Staff have been involved in the following fires since the season began:

Lochsport, Cann River & Mallacoota, Kangaroo Ground, Yarra Brae (market garden track), Mt Lofty, Sugarloaf Reservoir, Westerfolds, Keilor Park Dve (Brimbank), Wyndham Vale (the other side of Werribee), Mill Park, Petty's Orchard vicinity, Portland/Nelson Complex and Donnelly's/



Lunchtime back-burning. Near Licola.



Re-potting of Terrestrial Native Orchids.

Many hands have been helping with the re-potting of the nursery's native orchids. Species include *Pterostylis nutans*, *P. curta*, *P. revoluta*, *P. concinna*, *Chiloglottis reflexa*, *C. trapeziformis*, *Diuris orientis*, *D. sulphurea* and *Acianthus pusilla* and *Spiranthes australis*.

Linda

TAGS (Thursday activity groups) & WAGS (weekend activity groups) 2013

TAGS meet at the nursery at 9.15 am for a 9.30 pm departure. WAGs meet at times given below, at the nursery beforehand or at the specified location. Please remember to wear appropriate footwear and clothing for the weather, and please bring your own filled water bottle. Contact number: 0408 317 327

Day	Date	Time	Site of Activity	Activity undertaken	Leader	Difficulty rating
Sat.	02/03/2013	10:00am	Nursery Rangers Depot Pound Bend Road	Propagation Workshop	FOWSP led	Easy
Thurs.	07/03/2013	9.15am~12 noon	Alexander Road	Woody weeding Desert Ash	Bernie	Moderate
Thurs.	07/03/2013	10:00am	Nursery Rangers Depot Pound Bend Road	Propagation Workshop	FOWSP led	Easy
Thurs.	21/03/2013	9.15am~12 noon	Glynn's old house site	Ink weed removal	Cam/Kylie	Easy
Thurs.	04/04/2013	9.15am~12 noon	Naughton's Rd.	Woody Weeding	Janaya	Moderate

Difficulty ratings:

Easy: Even terrain, some light lifting, kneeling and bending involved. Few tripping hazards.

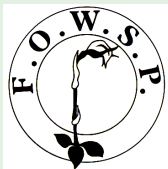
Moderate: Uneven terrain, light to heavy lifting, kneeling and bending involved. Tripping hazards present.

Difficult: Steep terrain, light to heavy lifting, working in over-grown areas and lots of bending. Many tripping hazards and slippery surfaces present.

Check the website for any changes at <http://fowsp.org.au/activities.php>

Please note TAGS and WAGS will be cancelled on Total Fire Ban days or when weather conditions are deemed hazardous.

FOWSP COMMITTEE 2013			OTHER FOWSP CONTACTS	
Artur Muchow	0415 383328	Secretary	<u>Nursery Manager</u>	Josh Revell
			Nursery Phone	0408 317 327
				nursery@fowsp.org.au
Lynda Gilbert	9844 0106	Treasurer	<u>Park Office</u>	9844 2659
Linda Rogan	9435 5806	Newsletter editor	<u>Newsletter assist</u>	Joan Broadberry
lindarogan@netspace.net.au				9846 1218
Kelly Wooster	9844 2819	Social media contact; facebook	<u>Wildlife Rescue</u>	Adriana Simmonds
				9722 2908
Jan Falconer	9844 1226		<u>Koala Rescue</u>	Julie Pryor
				9722 1117
Cathy Willis	0418 142297		<u>Librarian</u>	Judy Green
				9844 2096
Gray Ardern	0418 190261		<u>Webmaster & membership</u>	Jason Patton
			mobile	0402 121838
				jason@parau.com
Caitriona Young	9844 2842			
Sybille Ims	9844 1335 or 0405 500	Market trailer	Website:	www.fowsp.org.au
278	imsbs@netspace.net.au			



FOWSP/Manningham Thursday nature walks

Leader: Cathy Willis



This series of educational and interpretive nature walks explores some of Manningham's most inspiring and interesting bushland. Each walk is paced to allow participants to enjoy and appreciate the natural beauty of the area. Please wear appropriate clothing for the weather including a hat and sturdy footwear. Bring a water bottle and snack. All times and distances are approximate.

Ratings:

Easy – Flat or undulating well formed tracks/paths with low tripping hazards.

Moderate – May include some moderately steep or narrow sections or have higher tripping hazards.

Difficult – Includes steep and/or narrow sections, slippery sections, or high tripping hazards.

Bookings are essential as places are limited. Meeting points will be provided at time of booking..

To book call 9840 9124 or email eepadmin@manningham.vic.gov.au **Book early as places are filling fast.**

Thursday 28th March 9.30 am Koornong – a view from the other side This section of Warrandyte State Park is in directly opposite Manningham's iconic Jumping Creek Reserve. This much less visited reserve on the north (Nillumbik) side of the river offers a different perspective, with beautiful views of the river.

Distance: 3kms Time: 2.5hrs Rating: Difficult

Thursday 2nd May 9.30 am Westerfolds Wandering. The Westerfolds section of Yarra Valley Parklands was saved from development in the 70s and now forms part of a valuable habitat link stretching all the way from Kinglake Nat. Pk. through to Yarra Bend Park at the city's edge. Distance: 5km Time: 3 hrs. Rating: Moderate

Thursday 23rd May 9.30 am Yarra Brae – trek through the heart of the gorge. Follow the Yarra River downstream through one of the most remote and least accessible parts of the Warrandyte Gorge. This walk involves a creek crossing and off track walking, but the reward is well worthwhile. Distance: 8 km Time: 5 hrs Rating: Difficult Note: BYO lunch and ample water.

The views and opinions expressed in this publication are those of the authors, and do not necessarily reflect those of FOWSP

Newsletter Team this month: Linda Rogan,
Joan Broadberry, Mel Coupar (Line drawings)

FOWSP THURSDAY PROGRAM

We meet for propagation and other nursery activities every Thursday morning at 9.30 am at the Warrandyte State Park depot, Pound Bend Road, Warrandyte (Melway 23 C10), unless otherwise stated below. Propagation takes place from 9.30 am to 12.30 midday.

No prior experience necessary -

There is always someone available to show you the ropes.

NURSERY OPENING HOURS

The nursery is open for plant sales (by donation) every Thursday.

9.30 am to 12.30 pm and

the first Saturday of every month, 9am to 1pm (to coincide with the Warrandyte Market) and the first Sunday of each month

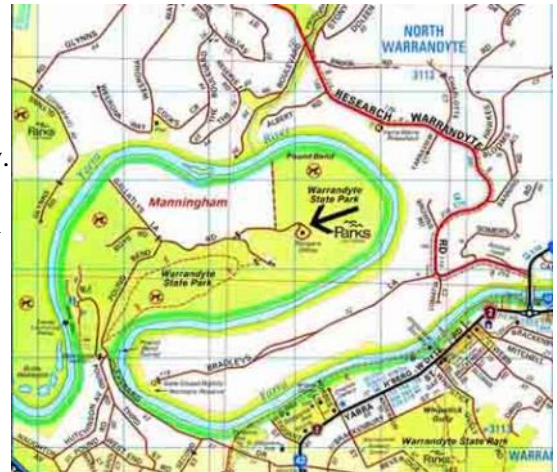
2 pm to 4 pm.

Nursery is closed to customers and volunteers on Total Fire Ban Days

Prices 2012

Members \$1.50

Non-members \$2.00



Copyright 2008 Melway Publishing Pty Ltd

Reproduced from Melway Edition 36 with permission

Important Nursery Notice

Warrandyte Festival weekend Saturday 23rd and Sunday 24th

Nursery Open both days 10 am - 4 pm

A wide range of plants available including grasses, groundcovers, wildflowers, shrubs and trees.
up to 50% off!!

Manningham City Council Environment Seminars 2013

The 2013 Manningham Environmental Seminars are held on the first Wednesday of the month (except May when it will be on Wednesday 8 May).

Many of the seminars will be complemented with field sessions to facilitate broader education on the topics. **No bookings are required for the evening talks** however the **field sessions must be booked and can only be booked at the seminar.**

Seminars start at 7.30 pm in the Chandelier Room at the Grand Hotel, Warrandyte.
For further information phone Lyn Meredith 9840 9326



6th March '**Wildlife Health Surveillance Victoria**' is a faculty of veterinary science at Melbourne University. They investigate reports of sick and dead wildlife in Victoria to understand the health implications for wildlife and detect changes. This important work is completed because wildlife health can affect biodiversity conservation and ecosystem health. It can also have an impact on bio-security and the health of domestic animals and people. Pam Whiteley will present this subject discussing the benefits of reporting diseased and dead wildlife to better manage and understand epidemics for biodiversity protection.

John Harris's talk in February had to be cancelled due to the power outage. It will now be held on 3rd April Gone but not forgotten - Early Fauna of Victoria: presented by John Harris.

At the time of European settlement in Victoria, the faunal composition in Victoria was very different from what is it today. Of the 91 terrestrial (non-marine) species recorded in this state, 14 are no longer found here and five have become extinct altogether. This presentation will look at these 19; possible causes for their disappearance and attempts to reintroduce them. John Harris is a Fauna Ecologist and President of the Field Naturalists Club of Victoria.

Crazy for Daisies

OK, SO I HAVE HAD A WEAKNESS for the daisy family of flowers, (Asteraceae family) since I was little; making daisy chains with the Cape Weed and wishes by blowing the dandelion seed heads all over the place on my walk home from school.

This family of plants is one of the largest groups with a cosmopolitan distribution having around 25,000 species in the world and 1,000 in Australia. A vast array of uses includes: culinary—the humble lettuce: medicinal—such as Echinacea for colds & Bellis a potential treatment for HIV: insecticidal—Pyrethrum and of course ornamental e.g. Dahlia and Gerbera. The Warrandyte State Park has 53 species of Asteraceae present with numerous species considered rare within the district.

My fascination with the daisies continues from observations of the stunning yellow flowers of the Everlasting (or Paper) daisies found in the Victorian bush which stand out ever so brightly against the dry parched summer landscapes. The common names make a lot of sense but it has been quite tricky keeping up with recent changes of botanical names.

Some, which have caught my eye recently at the nursery include:
 Hoary Sunray *Leucochrysum albicans*, a small tufted herb to 30cms which flowers between November-March. This species had a district status of Endangered in 1999. It is a great addition of colour around a rockery when not much else is flowering.



Chrysocephalum species. Photo by Kel

(Continued on page 8)

FOWSP MARKET TRAILER

Thanks to those who helped out

on 1st December 2012

**Diane and John Baird
 Caitriona and John Young
 Christine Andell and Jan Davies
 Lyndy Gilbert and Ken Crook.**

on 2nd February

**Diane and John Baird,
 Christine Andell, Jan Davis,
 Marion Thomson and Lyn Moore
 Ken Crook and Lindy Gilbert.**



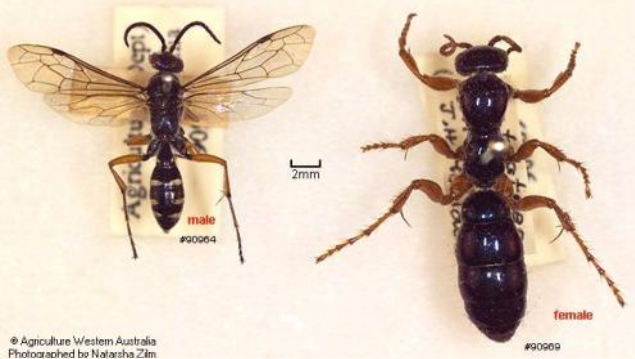
And Peter Curry for picking up and delivering the Trailer each time.

The Warrandyte market is held on the first Saturday morning of the month from 8.30 am to 12.30 pm at Stiggants Reserve. Volunteers are rostered in pairs to (man/woman) the FOWSP information trailer for just one hour. If you are interested in being on the market roster for 2013 please contact **Sybillie Ims 9844 1335/0405 500 278** imsbs@netspace.net.au *First timers are always paired with someone more experienced.*

Future market dates are: *Saturday March 2nd, and Saturday 6th April*

*Extra helpers are needed for the Warrandyte Festival Warrandyte Festival
 Sat & Sun. 23-24 March*

Male and female Blue "Ant" *Diamma bicolor*
from Agriculture Western Australia



This wasp is unique in the Typhidae family. The winged male is smaller than the wingless female. All other members of this family attack beetle larvae as a host for their young. This wasp captures, paralyzes and lays her eggs in the body of a mole cricket similar to the one pictured below. Adults of both sexes feed on the nectar of flowers and thus are also pollinators. (see female on back cover)

Mole Cricket the Blue "Ants" Prey

The mole cricket below was happily ensconced in our potting soil until Chris dug it out for a photo.



This one appears quite similar to *Gryllotalpa brachyptera*. The chirping of male mole crickets is heard on summer nights and the sound is magnified by the horn shaped opening of the entrance of the burrow.

The life cycle is shown in this drawing from Lydekker, R. 1879 The Royal Natural History. Volume 6. Frederick Warne and Co. (from www.archive.org) *Linda*



Mole-cricket, with eggs and larvae (slightly enlarged).

(Continued from page 7)

Common Everlasting, *Chrysocephalum apiculatum*, we have seed from a few areas within the WSP of this small to prostrate spreading herb. It has silver grey foliage with terminal clusters of yellow flower-heads most of the year which peak between September—December.

Ok, now here is a mouthful. The Clustered Everlasting or *Chrysocephalum semipapposum* which interestingly has three forms found in our area: the foothills, valley and mountain forms All have terminal clusters of small yellow flowers but a great variation in foliage and preferred growing conditions from moist gullies to drought prone areas.

Kel

News from the Committee:

- The remains of old greenhouse will be cleared away by early March in preparation for the arrival of the multipurpose office/education centre.
- The Frog poster will be updated and reprinted.
- TAGS and WAGS include many and varied activities for the year ahead. The schedule has been distributed. Check the website for updated changes.

Nursery Report:

- Seed sorting, orchid re-potting as well as other propagation activities have continued apace in spite of a closure on one Thursday due to TOTAL FIRE BAN.

Rangers Report:

- The rabbit baiting program is well under way with pre spotlight counts already completed, bait stations and notifications will be distributed over the next few weeks, if they have not been already.
- See page 3 for *Fighting Fires 2013*.

Next Committee Meeting

Date: Tuesday 12 March

Venue: Ranger Station, Pound Bend

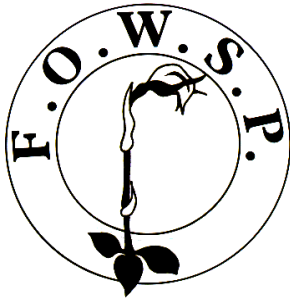
Time: 19:30 pm sharp





Glynn's Wetlands summer 2013:
From top left clockwise: Drying pond; Yellow Bladderwort;
Spotted Flower Chafer probably *Polystigma punctata*;
Peter photographing ducks on Azolla; Juvenile White-necked Heron; Brown Tree Frog *Litoria ewingi*.
Linda





Print
Post
346802/0005

Postage
Paid
Australia

**REGISTRATION BY AUSTRALIA POST
PP 346802 / 0005**

If undeliverable please return to
Friends of Warrandyte State Park Inc.
P.O. Box 220 **Warrandyte, 3113**



Diamma bicolor also called the Blue Ant

This is a female and it is actually a wasp. I have tried for some time to photograph her when I have found her moving rapidly amongst the leaf litter. This time I temporarily captured her (carefully as she can sting) and gave her a chill in order to slow her down for photos. See p. 8 for more of her story.

Linda

March 2013 Vol.31 no. 2

PLEASE CHECK YOUR ADDRESS LABEL TO SEE IF YOUR SUBSCRIPTION IS DUE

FOWSP Membership Renewal Form

Name

Address

.....

Telephone no. Email

Membership (family) \$30
Concession \$10

Newsletter by email (tick box)

Send to: FOWSP PO Box 220, Warrandyte 3113 or renew on the website www.fowsp.org.au with the option of direct deposit payment.

This newsletter is printed on recycled paper

Email photo bonus page

The Gang (gang) of Brackenbury St. There is a family of four. Photo sent by Bruce Marsh.



Pobblebonk Frog *Lymnodynastes dumerilii* also found living in the nursery potting mix this summer.



This hungry caterpillar found grazing on tube stock of *Grevillea rosemarinifolia* has been identified as a *Oenochroma vinaria*, the Wine-coloured Moth. The female featured in the photo bonus page last month is also this species but fed on young Red Box. It took a year to emerge from pupa. They generally feed on *Hakea*, *Grevillea* and *Banksia*.



Seed sorters and seeds of *Lomandra longifolia*

**Your photos can appear on this page (subject to space available) if you email them as follows:
lindarogan@netspace.net.au**