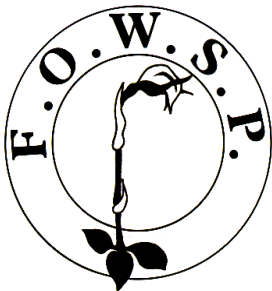


Friends of Warrandyte State Park



Newsletter

Website: www.fowsp.org.au

Friends of Warrandyte State Park (FOWSP) Inc. PO Box 220 Warrandyte 3113
ABN 94170156655/ACN A0024890C

Editor's Corner

Firstly, my sincere thanks to Joan Broadberry for compiling the excellent newsletter for September. That freed me to travel to WA where Peter and I experienced an exciting and fascinating encounter with Dawson's Bees amongst many other adventures.

Back at the FOWSP nursery in mid September I found many gems to test my macro skills p.2.

However I missed out on the special Watson's Creek Habitat Link work day, reported on p. 3 by Carol Page.

On page 4 Gray reports on a pleasant TAG experience at Queenstown Cemetery.

Mark your calendars for the AGM 17th November. While details are yet to come, it is likely to be an early evening affair followed by a spotlighting adventure.

Wire caught under the Kuboi, story p. 3



A crew of colourful FOWSPians preparing to attack under the guidance of Ranger Cam, story page 3.

I have never before felt so many factors threatening the survival of our unique flora and fauna as well as the human environment we all depend upon. Nor do I remember a time when such a large and important part of the population seems to believe that ignoring or hiding the problems is the best course. It would be easy to feel discouraged as we see so many backward steps being taken at so many levels.

However, groups such as FOWSP are among the most positive things I see and we still have a great deal of value worth saving. So keep your spirits up and watch for every opportunity to combine your strength with others to help us all move closer to an environmentally safer future.

And of course, enjoy the newsletter.

Linda

Deadline for November 2013 edition newsletter is

Friday 25th October 2013

contributions can be emailed to [Linda Rogan lindarogan@netspace.net.au](mailto:Linda.Rogan.lindarogan@netspace.net.au)
or posted to PO Box 220, Warrandyte 3113



Lovely little things at the FOWSP nursery in early spring.

Photos by Linda Rogan
Captions on page 8.



Watson's Creek Habitat Link

September 12 woody weeding

Carol Page

THIS IS A LINK between unburnt forest in the Kinglake National Park Everard Block and Warrandyte-Kinglake Nature Conservation Reserve. It was created after the 2009 Black Saturday fires

Target – the Sallow Wattles, *Acacia floribunda* and *Acacia longifolia* - these were thought to be *Acacia leprosa*, Cinnamon Wattle at the time of planting in the winter of 2010 and unfortunately they had flourished.



Removal of *Acacia floribunda* and painting of the stump.

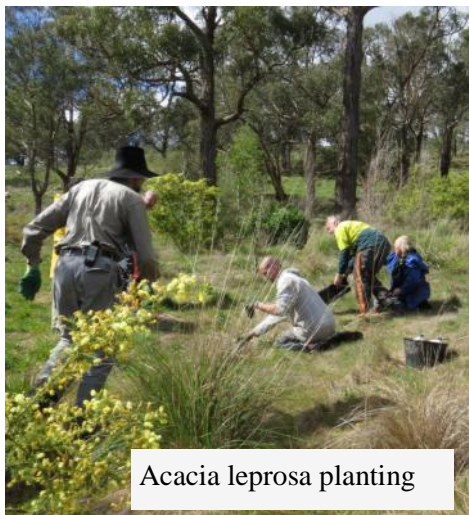


Difficult terrain

The terrain was difficult to negotiate as the hills had been mechanically ripped along the contours prior to planting and

grasses, weedy and native obscured the furrows. One of the successes was the instillation of hardwood logs sourced from fire-affected roadsides and private land clearing of burnt and unsafe trees – they are serving as a wonderful multi-purpose habitat.

As we worked, the *Acacia verticillata*, Prickly Moses, was flowering in profusion around us – a wonderful sight – fortunately twice as many of that species had been planted .



Acacia leprosa planting



Are all these **my** bones?

Two of the other species planted were of interest to me, firstly *Eucalyptus fulgens*, Green Scent-bark, separated from *Eucalyptus aromaphloia*, Scent – bark – it is rare in the Park and the seed was collected, according to Cam Beardsell, 'across the road'. The other was *Leptospermum scoparium*, Manuka, which I mistakenly thought was *Leptospermum continentale*, Prickly Tea-tree.

Tony , a ranger from Kinglake, went to a lot of trouble and supplied a BBQ feast at lunch time – we did justice to it and were sufficiently energized to complete the removal of the trees. Finally we planted nine healthy *Acacia leprosa*, the seed of which had been sourced from One Tree Hill, and on the way

back to the vehicles Cam pointed out a magnificent Messmate, *Eucalyptus obliqua*. It is assumed to be around 300 years of age as it bears what is considered to be a scar made by the local aboriginals.



Eucalyptus obliqua an aboriginal scar tree

Return to Queenstown Cemetery.

LAST YEAR, I greatly enjoyed a TAG day helping the Friends. and Relatives. Of Queenstown Cemetery with the weed control of this very special cemetery near Smiths Gully. This year I was unable to attend the day where FOWSPians again helped but Gray has kindly furnished me with a brief report which you can read below. I was glad to hear from him, that Freesias were not an issue this year. *Linda*



Elizabeth Wykes,
from Friends and Re-
lations of the Queens-
town Cemetery

“As last year, Elizabeth Wykes, the 'mother' of the whole thing was there, and chatted about a rare *Persoonia* and the history of the Cemetery. Wearing one of his woolly bean-ies was Jarrod, the vegetation manager for the extended cemetery reserve - he was our informative supervisor for the day.

Queenstown Cemetery is a wonderfully lively site. It is Grassy Dry Forest and remarkably intact - probably because, as a cemetery it has not been thrashed by grazing.

We weeded *Ixia* and other garden escapees, but had to desist from destroying some exotic plants - for example *Yucca* - because of their competing heritage value.

Some of the graves are miniature gardens of many indigenous plants, ranging from a tiny *Leucopogon* [beard-heath] to the familiar but gorgeous *Glossodia major* [wax-lip orchid].

At the end of the work-day Jarrod led us up the hill to admire the high quality of the remnant vegetation - there were swathes where there were no weeds at all! There were lots of *Caladenia carnea* [pink finger], and a large dense patch of FOWSP's floral emblem: *Pterostylis nutans* [nodding green-hood].

Whether it was the tranquil and lovely setting, or whether Lyndy had excelled herself [or both!] the morning tea was especially delicious.” *Gray*

PS. Much weedy *Ehrharta* or Veldt grass was found and weeded under the *Exocarpus cupressiformis* or Cherry Ballart. According to Graeme Lorimer, *Exocarpus cupressiformis* secretes a growth-inhibiting compound which normally reduces competition for water and nutrients. Unfortunately the South African grass *Erharta erecta* is immune to this compound - that is why you see so much of it under Cherry Ballart.

Nillumbik Shire Council



Friday 18th October, 7.30pm - 9.30 pm Spotlighting Walk.

Bring your torch and come along to see, hear and learn about Nillumbik's nocturnal creatures. As we will be walking around at night please wear suitable clothing and sturdy footwear.

Cost: Free **Where:** Yirrip Reserve, Koos Road, Kangaroo Ground (Melway ref. 271 H3)

Bookings: Call 9433 3316 or visit www.nillumbik.vic.gov.au/EnviroEvents



Manningham/FOWSP Walks Leader Cathy Willis



Please wear appropriate clothing for the weather including a hat and sturdy footwear. Bring a water bottle and snack. Walks will be paced to appreciate nature.

Meeting place will be given at the time of booking.

Thursday 24th October, 9.30 am The Common Circuit - The ridge at the Common is the watershed between the Jumping Creek and Parsons gully catchment with views up towards Mt. St Leonard. Its 50 hectares of bushland forms the bulk of the Haslams Track Biosite.

Distance: 3 km. **Time:** 2.5hrs **Rating:** Moderate. **Booking:** 9840 9124: eepadmin@manningham.vic.gov.au
Book early places are limited.

| FOWSP COMMITTEE 2013 | | | OTHER FOWSP CONTACTS | |
|----------------------------|-----------------------|-----------------------------------|-----------------------------------|----------------------|
| Artur Muchow | 0415 383328 | Secretary | <u>Nursery Manager</u> | Josh Revell |
| | | | Nursery Phone | 0408 317 327 |
| | | | | nursery@fowsp.org.au |
| Lynda Gilbert | 9844 0106 | Treasurer | <u>Park Office</u> | 9844 2659 |
| Linda Rogan | 9435 5806 | Newsletter editor | <u>Newsletter assist</u> | Joan Broadberry |
| lindarogan@netspace.net.au | | | | 9846 1218 |
| Kelly Wooster | 9844 2819 | Social media contact; facebook | <u>Wildlife Rescue</u> | Adriana Simmonds |
| | | | | 9722 2908 |
| Jan Falconer | 9844 1226 | | <u>Koala Rescue</u> | Julie Pryor |
| | | | | 9722 1117 |
| Cathy Willis | 0418 142297 | | <u>Librarian</u> | Judy Green |
| | | | | 9844 2096 |
| Gray Ardern | 0418 190261 | | <u>Webmaster & membership</u> | Jason Patton |
| | | | mobile | 0402 121838 |
| | | | | jason@parau.com |
| Caitriona Young | 9844 2842 | | | |
| Sybille Ims | 9844 1335 or 0405 500 | Market trailer | Website: | www.fowsp.org.au |
| 278 | imsbs@netspace.net.au | | | |

TAGS (Thursday activity groups)

TAGS meet at the nursery at 9.15 am for a 9.30 pm departure. Please remember to wear appropriate footwear and clothing for the weather, and please bring your own filled water bottle.

Contact number: 0408 317 327

Difficulty Ratings: Easy: Even terrain, some light lifting, kneeling and bending involved. Few tripping hazards.

Moderate: Uneven terrain, light to heavy lifting, kneeling and bending involved. Tripping hazards present.

Difficult: Steep terrain, light to heavy lifting, working in over-grown areas and lots of bending. Many tripping hazards and slippery surfaces present.

Check the website for any changes at <http://fowsp.org.au/activities.php>

| Day | Date | Time | Site of Activity | Activity undertaken | Leader | Difficulty rating |
|--------|---------------|--------------------------|---------------------|---|-------------|-----------------------|
| Thurs. | 3/10 2013 | 9.15 am to 12 noon | One Tree Hill | Woody Weeding targeting <i>Pittosporum</i> | Park Ranger | Moderate to difficult |
| Thurs | 17/10 2013 | 9.15 am to 12 noon | Murandaka Wetlands | Wetland planting | Park Ranger | Moderate |
| Thurs | 7/11 2013 | 9.15 am to 12 noon | Start FOWSP nursery | Koala count | FOWSP | Easy |

TAGS will be cancelled on Total Fire Ban days or when weather conditions are deemed hazardous.

The views and opinions expressed in this publication are those of the authors, and do not necessarily reflect those of FOWSP

Newsletter team this month were: Linda Rogan
Joan Broadberry, Mel Coupar (Line drawings)
Thanks to all the many contributors.

FOWSP THURSDAY PROGRAM

We meet for propagation and other nursery activities every Thursday morning at 9.30 am at the Warrandyte State Park depot, Pound Bend Road, Warrandyte (Melway 23 C10), unless otherwise stated below. Propagation takes place from 9.30 am to 12.30 midday.

No prior experience necessary -

There is always someone available to show you the ropes.

NURSERY OPENING HOURS

The nursery is open for plant sales (by donation) every Thursday.

9.30 am to 12.30 pm and

the first Saturday of every month, 9am to 1pm (to coincide with the Warrandyte Market) and

the first Sunday of each month

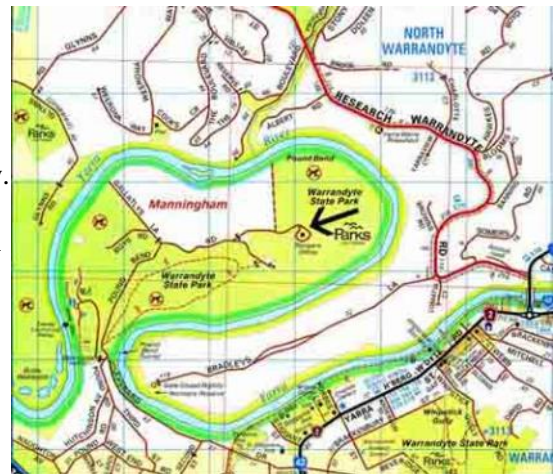
2 pm to 4 pm.

**Nursery is closed to customers and volunteers
on Total Fire Ban Days**

Prices 2012

Members \$1.50

Non-members \$2.00



Copyright 2008 Melway Publishing Pty Ltd

Reproduced from Melway Edition 36 with permission

The 2013 Manningham Environmental Seminars are held on the first Wednesday of the month.



Many of the seminars will be complemented with field sessions to facilitate broader education on the topics.

No bookings are required for the evening talks however the field sessions must be booked and can only be booked at the seminar.

Seminars start at 7.30 pm in the Chandelier Room at the Grand Hotel, Warrandyte.

For further information phone Lyn Meredith 9840 9326

Wednesday 2nd October: Wetland Restoration learn about factors affecting establishment and management of wetland plants, focusing on restoration decisions. *Presented by Damien Cook, co-director of Rakali P/L.*

Wednesday 16 October 9.00 am – 12.00 pm Field Trip Join Cam Beardsell, Ranger Parks Victoria, who will showcase the successes of works between 2011- 2013 that secured the establishment of new permanent wetland communities in the Yurak Tamboore Wetland. (Can only be booked at the 2nd Oct seminar)

Wednesday 6th November Identification of Indigenous and Introduced Grasses: *presented by Dr Graeme Lorimer* Environmental scientist, Dr Graeme Lorimer returns to show you how to identify the wild species that are most commonly encountered locally, with a focus on the ones that are most important in a positive or negative way. This seminar will show you how to recognise important species such as kangaroo grass, wallaby-grasses, spear-grasses, sweet vernal-grass and veldt-grasses. It will also explain the important properties of a range of species, indigenous and introduced. You'll get much more out of this seminar if you also book to attend **either** of the field trips below. Bookings are essential

Thursday 7th November and Sunday 10th November 9:30 am to 12:30 pm: FIELD TRIP: Grass identification at The 100 Acres with Dr Graeme Lorimer. Combine **either** of these identical walks with Dr Lorimer's seminar earlier in the week. He will use wild plants to show you how to recognise dozens of indigenous and introduced grasses as well as a few examples of rushes and sedges. He will also explain their various ecological roles and implications for bushland management. A lot of close inspection is involved and it will help if you take a 10× magnifier. The walk will be a few hundred metres through The 100 Acres in Park Orchards and take three hours, including morning tea (BYO).

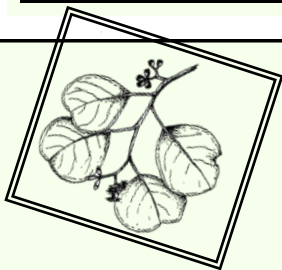
News from the Committee

- Due to increased costs, price for FOWSP plants will be \$2.50 tube, members \$2.00 as of 1st January 2014 .
- **Frog Posters** will soon be reprinted with support from Melbourne Water.
- Several options are being considered to enable the new building to be delivered to the site
- **New Rules for FOWSP** the new FOWSP rules, in compliance with the Associations Incorporation Act 2012, will be the subject of a special resolution to be presented to the membership at the 2013 Annual General Meeting.
- **The AGM** will be Sunday 17th November, mark you calendar now. Details next month.

News from the Nursery

- A Melbourne Water tender has been accepted for stream frontage plantings and works along the Yarra.
- Plants went out for 2 million sticks in the ground - planted at Mount Lofty
- Extra time has been spent in the past two weeks collating orders. Uncollected plants of people who have not responded to notices have been put back into the sales area.
- Preparations for seed collection are about to begin

| | |
|-------------------------------|----------------------------|
| Next Committee Meeting | |
| Date: | Tuesday 8th October |
| Venue: | Ranger Station, Pound Bend |
| Time: | 19:30 pm sharp |



FOWSP MARKET TRAILER

Many thanks to those who helped out on September market. Peter Curry for his regular transportation of the FOWSP trailer Diane and John Baird, Sybille Ims, Kelvin Watkins (new helper) Christine Andell, Lyndy Gilbert and Ken Crook.

Anyone wishing to assist in November at the market stall, please contact me, Sybille Ims imsbs@netspace.net.au OR 9844 1335/0405 500 278 as I will be away from late October and if possible, would like to fill the roster before my departure.

The Warrandyte market is held on the first Saturday morning of the month from 8.30 am to 12.30 pm at Stiggants Reserve. Volunteers are rostered in pairs to (man/woman) the FOWSP information trailer for just one hour.

First timers are always paired with someone more experienced.

Future market dates are: *Saturday 5th October and 2nd November.*

More News

The nursery has a wide selection of wildflowers and ground covers ready for spring planting.

Now is a great time to get out into the garden before the heat of summer sets in. We, of course, have plenty of mid story and canopy plants ready for new homes too. See you at the nursery. Happy planting!



Dichondra repens or Kidney weed. This tiny flower is seldom noticed but the plant makes an excellent ground cover Not to be confused with the

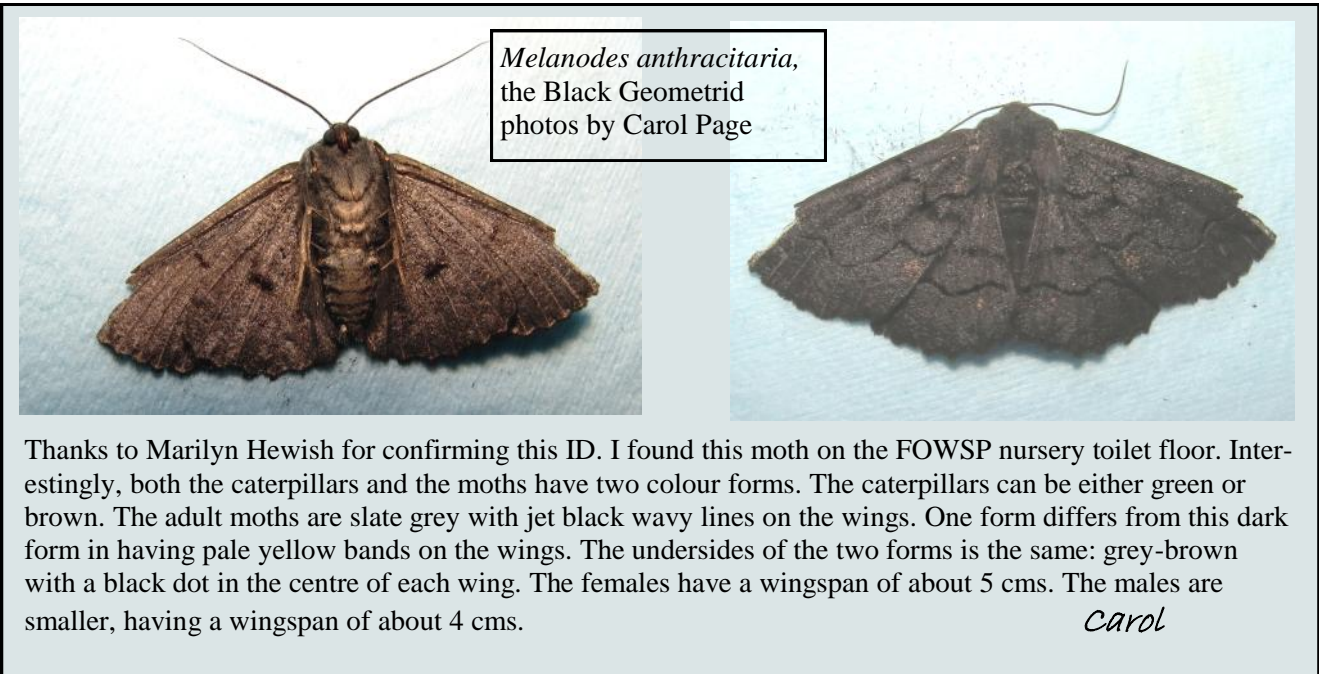
American specie *D. micrantha*

PLEASE NOTE: PLANT TUBE PRICES WILL INCREASE TO MEMBERS \$2.00 AND NON-MEMBERS \$2.50 EFFECTIVE FROM 1ST OF JANUARY 2014.

Additional Thanks Due:

A correction to the IGA article. Jan Falconer's name was omitted from the list of willing helpers. Not only did Jan make biscuits that were very popular, but she also worked on the stall for the duration of the stall.

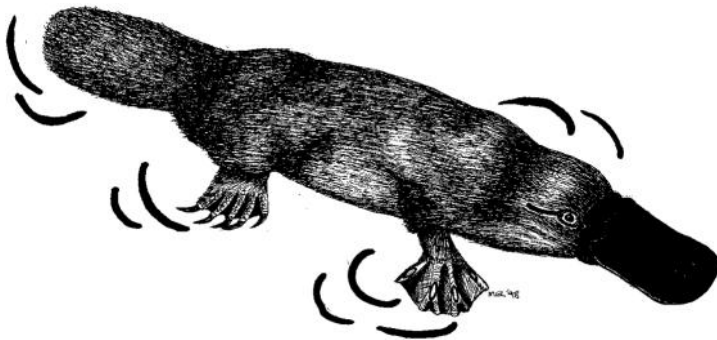
This is greatly appreciated. Thank you Jan.



Thanks to Marilyn Hewish for confirming this ID. I found this moth on the FOWSP nursery toilet floor. Interestingly, both the caterpillars and the moths have two colour forms. The caterpillars can be either green or brown. The adult moths are slate grey with jet black wavy lines on the wings. One form differs from this dark form in having pale yellow bands on the wings. The undersides of the two forms is the same: grey-brown with a black dot in the centre of each wing. The females have a wingspan of about 5 cms. The males are smaller, having a wingspan of about 4 cms.

Carol

platypusSPOT - citizen science for platypus conservation



We're calling on everyone to keep an eye out for the elusive platypus in their local waterways and get involved in the new community driven platypusSPOT.org

Over the last 6 years **cesar** and Melbourne Water have conducted intensive research and population surveys of platypuses in and around Melbourne. While a lot of vital information has been gathered over this time, it's clear that if we want to improve management and conservation out-

comes for the platypus we need to know more about their distribution.

This is where you come in! We're asking everyone to play a role in the conservation of this iconic species. If you've been lucky enough to see a platypus, jump onto the new website (www.platypusSPOT.org) and let us know.

This website, developed by **cesar** and Melbourne Water, allows you to submit your sightings, upload a photo, view sightings in your local area, learn about platypuses, and interact with other 'platypusSPOTters'. Your information will contribute to a better understanding of platypus distribution and enable more effective conservation of this unique Australian animal.

Human activities pose the biggest threat to the long term health and survival of platypus populations, but with appropriate management, conservation efforts and community engagement we believe it's possible for platypuses to thrive in both rural and urban environments.

We look forward to your feedback and seeing your contributions to platypusSPOT.org!

Josh and Tom

Follow us on Twitter: @platypusSPOT

- Captions :Lovely little things at the FOWSP nursery in early spring (p. 2)
1. *Billardiera* species with unknown item on petal tip.
 2. Golden-eyed Green Lacewing family Chrysopidae
 3. Horned hopper family Membracidae (see email extra as well for another view)
 4. Water droplet on *Pimelea humilis*
 5. Geometridae caterpillar face and true legs



“I SPY and photograph”

By B.G.

LEFT TO RIGHT (photo below left)

Professor Tim Entwistle, director of the Botanical Garden in Melbourne (on a social visit), Ranger Cam Beardsell and Peta Cumming (E.T.D.F), a Park Volunteer taking a break from taking plants out of the “ute”. Even at rest the discussion was about the most difficult of plant species to identify, algal research?



Tim is a some-time bush-walker and his favourite indigenous plant is the spider orchid.



KALGOORLIE TO CAIRNS

Anne (ex. Kalgoorlie) and daughter Bronwyn Hookay (below left) visited the park and were helping with propagating lomandras. Bronwyn works in Cairns as an ecologist with G.H.D. (an engineering firm) and her involvement is with the architectural engineering and environmental impact.



WRITTEN ON THE WHITEBOARD

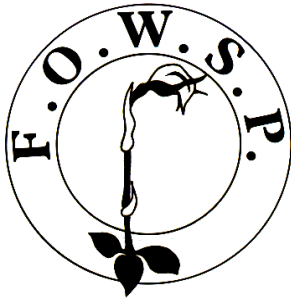
A valuable clue to the activities and whereabouts of Park staff is the whiteboard on the wall. It reveals information such as:

- Conrad - meeting 10:30
- Warren & Kylie working on 4th Hill
- “Rushy”-at teh Boulavard and Colin at Sugarloaf
- the PFFs on leave and return in Oct/Nov/Dec
- Tree works on 4th Hill - Luke
- and lots more, they are a busy lot aren't they.

RECYCLING AND RECOVERY

Some of the bins and bags at the WSP Depot to ensure material is properly sorted. Located near the workshops. (Photo right)





Print
Post
346802/0005

Postage
Paid
Australia

**REGISTRATION BY AUSTRALIA POST
PP 346802 / 0005**

If undeliverable please return to
Friends of Warrandyte State Park Inc.
P.O. Box 220 **Warrandyte, 3113**

Ranunculus inundatus River Buttercup

This native water plant was photographed at the FOWSP nursery in September. It is a vigorous stoloniferous perennial that grows in or near fresh water which means it is becoming less common in our region. It is also used in the aquarium trade. It can be propagated from pieces of stolon with roots.

Linda



October 2013 Vol.31 no. 8

PLEASE CHECK YOUR ADDRESS LABEL TO SEE IF YOUR SUBSCRIPTION IS DUE

FOWSP Membership Renewal Form

Name

Address

.....

Telephone no. Email

Membership (family) \$30
Concession \$10

Newsletter by email (tick box)

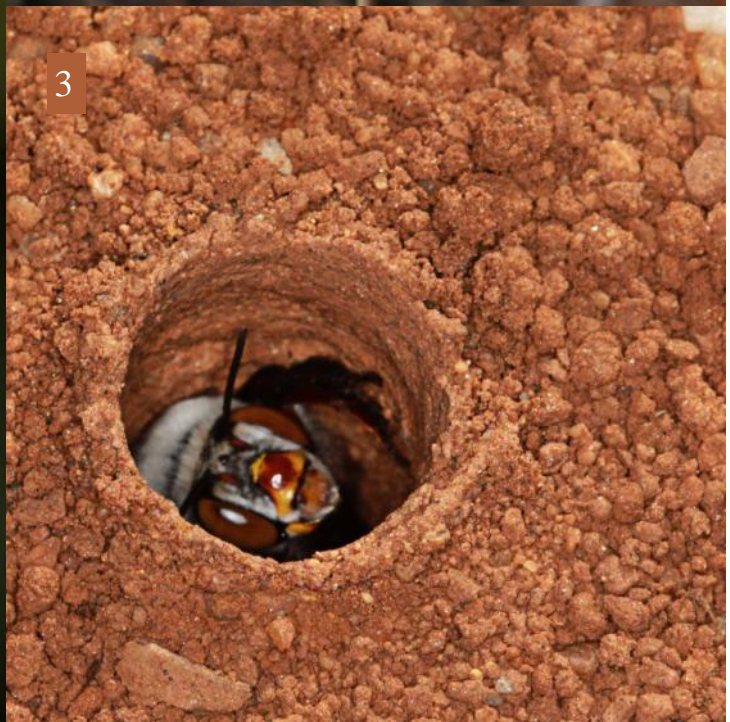
Send to: FOWSP PO Box 220, Warrandyte 3113 or renew on the website www.fowsp.org.au with the option of direct deposit payment.

This newsletter is printed on recycled paper

Email photo bonus page



1. Chrysomelidae: *Ditropidus: fugitivus* , males only have a large jaw and square head.
2. Queen of Sheba sun orchid at Badgingarra, WA.
3. *Amegilla dawsoni*, female building a turret.
4. Horned hopper family Membracidae side view with incidental aphid, see also p.2
1 to 3 from WA; 4. FOWSP nursery



Your photos can appear on this page (subject to space available) if you email them as follows:
lindarogan@netspace.net.au