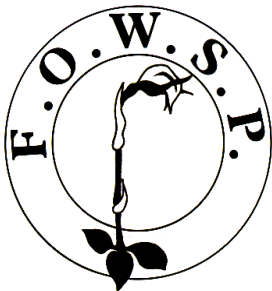


Friends of Warrandyte State Park



Newsletter

Website: www.fowsp.org.au

Friends of Warrandyte State Park (FOWSP) Inc. PO Box 220 Warrandyte 3113
 ABN 94170156655/Incorporation No. A0024890C

Editor's Corner

AS WE MOVE from early winter to deep winter on the Middle Yarra Timelines calendar, it's time for the warm underwear and jumpers forgotten in the bottom drawers. However nothing has slowed down at the FOWSP nursery. On a recent cold Thursday, Lyndy provided some delicious pumpkin soup to volunteers and workers. I was too busy warming my hands on the mug to get any photos.

Many changes have taken place in the Pound Bend area over the years, just have a look at the maps on p. 2.



Peter, a contractor for Parks Vic, shared his brilliant smile with us as he picked up a full trailer load of *Lomandra* destined to be planted near the Mullum Mullum, over the EastLink Tunnel.



Caitriona is one of several people who have been helping to remove plant guards in the Lower Orchard area. See Gray's observations of this project on p. 8-9.

The excellent film entitled: *Fire Threats and Hazard Assessment, A (Warrandyte) Resident's Perspective* by Jeremy Loftus-Hill. was part of the residents' submissions to the VCAT hearing in April on the proposed petrol station on Anderson's Creek. FOWSPians appreciated a private showing in May see p. 3.

Gloria brings to our attention another fascinating book from the FOWSP library p. 4. Some snapshots of Frogland and the Pollinator Garden are found on p. 7.

Lee, Graham and Linda were amongst those who enjoyed some evening spotlighting on faunal surveys for Currawong Bush Park p. 8.

Enjoy this newsletter, stay warm and send in your observations and environmental activities.

Linda

Deadline for July/August edition newsletter is

Friday 24th June 2016

contributions can be emailed to [Linda Rogan editor@fowsp.org.au](mailto:Linda.Rogan@fowsp.org.au)
 or posted to PO Box 220, Warrandyte 3113

Maps of Pound Bend and the Yarra River to Ponder



There is something satisfying in seeing this 3-D map of a section of the Yarra including Pound Bend. It helps to put other locations, such as Glynn's Reserve and Bradleys Lane, into perspective. This map was used by Parks Victoria in their rangers' office that was located in Glynn's Reserve in the 1990s. The map came from Peter Daile, who moved into a house on Glynn's Road in about 1978. When the office was going to be closed, about 1997, he mentioned to one of the Rangers that he'd like this map. Some time later, one of them dropped it off at his place. It looks as if there used to be a 'return' on the map, ie a 45deg join at one end that may have included a downstream section of the Yarra River. Past Ranger Glen found seeing this map very nostalgic and it led him to bemoan the dreadful lack of resources for management, weed and pest control that are currently available to rangers in Parks Vic compared to the past. This map is currently sitting in Gray's shed while we work out a way to protect and display it in the very limited space we have at the FOWSP nursery. Help and suggestions in how to accomplish this will be appreciated.

In contrast below see some aerial maps of the Pound Bend area cropped from photos sent to me by Garry French who is keen to see this history kept and made available. If possible we will get the larger maps printed and laminated for future viewing at the education centre.

Linda

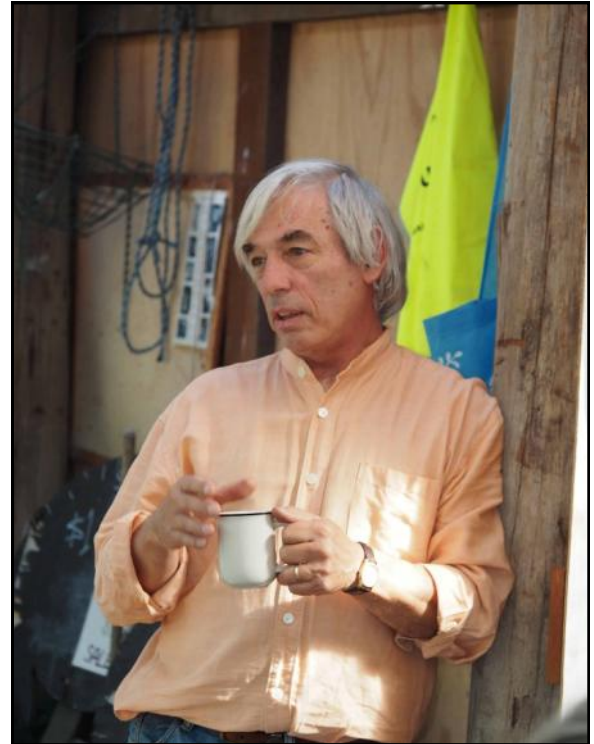


1931

Wagner's Lower Orchard area

1978

Fire Threats and Hazard Assessment A (Warrandyte) Resident's Perspective



For the first time our new Education Centre became a temporary film theatre for the showing of **Jeremy Loftus-Hill's** short film that he exhibited at the VCAT hearing in April for the case against the proposed service station and convenience store on Anderson's Creek. Well received by FOWSPians, it showed graphically the level of fire risk that is associated with this site. Many members have also attended the initial hearings and some made verbal presentations as well. Interested members can support the fundraising events below.

The Warrandyte Character Protection is holding two fundraising events to pay for legal representation at VCAT 26-29 July. Please support our fight against the proposed service station and convenience store on Andersons Creek near the Harris Gully roundabout. There will be damage to our environment and the wildlife that depends on the Creek.

High Tea and live jazz with the talented Julia Mohr on keyboard. Saturday 18 June 2016. Bring friends and make up a table. \$20 donation per person. Book by 11 June, only 50 places! Time: 2pm to 4pm. Date: Saturday 18 June 2016, Location: Uniting Church Hall, Taroon Ave, Warrandyte. Free parking at Hall.

Family Dinner Dance Fundraiser at the RSL with the Riffmasters. Sunday 17 July 2016, from 4-8pm. \$25 donation per person for a two course meal with soul and blues music. Drinks at RSL bar prices. Book by 11 July. Location: RSL Sub Branch, Brackenbury Street, Warrandyte. Parking outside the RSL or at the rear of the Warrandyte Community Centre, Webb St, Warrandyte.

For both events, **book online at Eventbrite.com.au** (search Warrandyte Cause) and donate to the Warrandyte Character Protection, Bendigo Bank, Warrandyte; BSB 633 000; Acc No: 155176894 (plus name). **Or Cheque:** To PO Box 220 Warrandyte 3113 Att'n Lynda (Contact details: 0422746305)

Bookchat with Gloria

BOOKCHAT – June 2016

“BOTANY FOR GARDENERS – An Introduction and Guide”

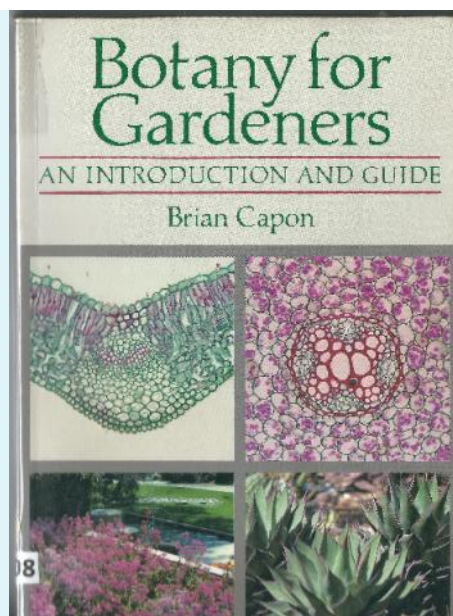
Brian Capon

This is not a new book (it was originally published in 1990) but it is new to our library. Despite their obvious love of plants, many gardeners have yet to take the logical step of learning more about them through the study of botany, perhaps fearing the subject is too complex and technical. “Botany for Gardeners” provides the perfect introduction. It’s plainly written but not oversimplified, it speaks specifically to gardeners and horticulturists and has also been warmly received as an introductory botany text for students. The book is well illustrated with line drawings and photographs.

What happens inside a seed after it is planted? Why do stems and roots grow in opposite directions? What does each part of the flower do?

The entire breadth of botanical science is surveyed: the structure, function, and evolution of plants; how plants are constructed from cells and how they grow; responses to environments and adaptations; the process of photosynthesis; plant reproduction and genetics.

The author, Brian Capon, was born in Cheshire, England. He was educated in England, Canada, and the United States, receiving Master of Science and Ph.D. degrees at the University of Chicago. For thirty years he was Professor of Botany at California State University, Los Angeles. He retired in 1991 as Professor Emeritus. He is an accomplished landscape and still life painter, enjoys photography, and has travelled extensively throughout the world.



Our copy is in the Library’s Gardening section – Reference No. GA 1408.

TAGS (Thursday activity groups)

TAGS meet at the nursery at 9.00 am for a 9.15 am departure. Please remember to wear appropriate footwear and clothing for the weather, and please bring your own filled water bottle.

Contact number: 0408 317 327

Difficulty ratings:

Easy: Even terrain, some light lifting, kneeling and bending involved. Few tripping hazards.

Moderate: Uneven terrain, light to heavy lifting, kneeling and bending involved. Tripping hazards present.

Difficult: Steep terrain, light to heavy lifting, working in over-grown areas and lots of bending. Many tripping hazards and slippery surfaces present.

Check the website for any changes at <http://fowsp.org.au/activities.php>

Thurs	2 June	9-12:00 am	Lower Orchard Track	Planting	Easy	FOWSP
Thurs	9 June	9-12:00 am	Mullum Mullum Beckett Road	Planting	Easy	FOWSP
Thurs	16 June	9-12:00 am	Mullum Mullum Heads Rd	Planting	Moderate	FOWSP
Thurs	23 June	9-12:00 am	Mullum Mullum Heads Rd	Planting	Moderate	FOWSP
Thurs	30 June	9-12:00 am	Lower Orchard Track	Planting	Easy	FOWSP

Please note TAGS and activities will be cancelled on Total Fire Ban days or when weather conditions are deemed hazardous.

FOWSP COMMITTEE 2016			OTHER FOWSP CONTACTS	
Artur Muchow	0415 383328	Secretary	<u>Nursery Manager</u>	Josh Revell
			Nursery Phone	0408 317 327
			email nursery@fowsp.org.au	
Lynda Gilbert	9844 0106	Treasurer	<u>Park Office</u>	9844 2659
Linda Rogan	9435 5806		<u>Newsletter assist</u>	Joan Broadberry
	editor@fowsp.org.au			9846 1218
Jason Patton	0402 121838	Webmaster and membership	<u>Wildlife Rescue</u>	Adriana Simmonds
	jason@parau.com			9722 2908
Annette Lion	0414-249-729	Facebook Coordinator	<u>Koala Rescue Advice only</u>	Julie Pryor
				0417587798
Gray Ardern	0418 190261		<u>Librarian</u>	Gloria Moore
				0402 285005
Caitriona Young	9844 2842	Minute Secretary	<u>Market Trailer</u>	Jan Falconer
				9844 1226 or 0419 872 096
			email trailer@fowsp.org.au	
Kelvin Watkins	0488 039 774			
Jan Falconer	0419 872 096		Website: www.fowsp.org.au	

The views and opinions expressed in this publication are those of the authors, and do not necessarily reflect those of FOWSP

Newsletter Team this month: Linda Rogan, Gloria Moore, Peter Rogan
Mel Coupar (Line drawings)

Next Committee Meeting

Date: Tuesday June 14th 2016

Venue: Education Centre, Pound Bend

Time: 19:30 pm sharp

Manningham City Council Environment Seminars

The Environment Seminars are held on the first Wednesday of the month.

Many of the seminars will be complemented with field sessions to facilitate broader education on the topics. No bookings are required for the evening talks; however, RSVPs must be provided for the field sessions. Due to the popularity of the field trips bookings are limited to three field trips per person. You must attend the corresponding seminar to keep your field trip booking. **Bookings now open. Info and bookings: <http://www.manningham.vic.gov.au/environment-seminars>**

Venue: Bull and Bush Room at the Grand Hotel, Warrandyte Time: 7.30

Enquiries: Lyn Meredith, 9840 9326.

Wednesday 1st June 2016 Predator - prey ecology and trees Ecologist Dr Jeff Yugovic will discuss the complex nature of predator-prey ecology in south-east Australia, and how to spot and reverse the associated decline of trees within the Melbourne area. For more information before this seminar, you can read [Dr Yugovic's online discussion paper](#).

Field Trip Thursday 2nd June 2016 10 am- 12 noon Trees in Manningham Bookings are essential, please email eepadmin@manningham.vic.gov.au

Wednesday 6th July Yarra River - Which way shall I go? What determined the course of the Yarra River - from its earliest times until today? This presentation and field trip by geologist Dr Neville Rosengren will investigate why the river is where it is - from the catchment scale to the shortest reach - using circumstantial, speculative and hard evidence.

Field Trip Thursday 10.00 am - 4.00 pm The Course of the Yarra River Bookings are essential, please email eepadmin@manningham.vic.gov.au

In the event of extreme weather, including a Total Fire Ban or Code Red Fire Danger Day, the seminars and field trips will not go ahead



FOWSP THURSDAY PROGRAM

We meet for propagation and other nursery activities every Thursday morning at 9.30 am at the Warrandyte State Park depot, Pound Bend Road, Warrandyte (Melway 23 C10), unless otherwise stated below. Propagation takes place from 9.30 am to 12.30 midday.

No prior experience necessary -

There is always someone available to show you the ropes.

NURSERY OPENING HOURS

The nursery is open for plant sales every Thursday.

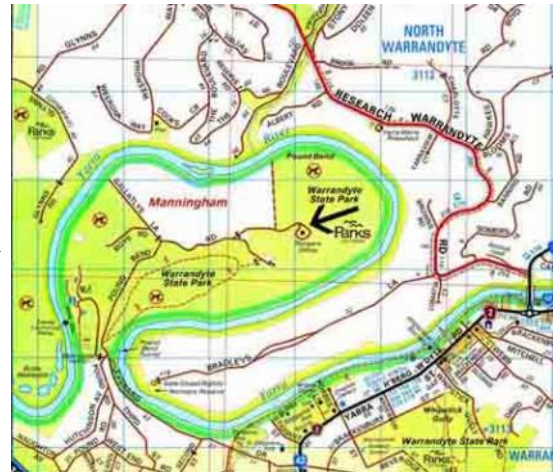
9.30 am to 12.30 pm and

the first Saturday of every month, 9am to 1pm (to coincide with the Warrandyte Market) and the first Sunday of each month

2 pm to 4 pm.

Closed Christmas and New Years days.

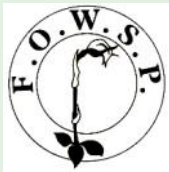
Also closed to customers and volunteers on days of severe weather and on Total Fire Ban Days



Copyright 2008 Melway Publishing Pty Ltd
Reproduced from Melway Edition 36 with permission

Prices: Members \$2.00

Non-members \$2.50



FOWSP/Manningham Thursday nature walks

Leader: Cathy Willis



This series of free nature walks will explore various sections of the Yarra River from the eastern end of Manningham in Wonga Park downstream to Templestowe.

Each walk is paced to allow participants to enjoy and appreciate the natural beauty of the area. Please wear appropriate clothing for the weather including a hat and sturdy footwear. Bring a water bottle and snack.

Winter solstice at Currawong Bush Park and Mullum Mullum Creek

At the beginning of deep winter when the fungi, geophytes and mosses abound, we walk upstream on the wild side of Mullum Mullum Creek through Currawong Bush Park, then return downstream along the opposite side of the creek. Distance: 6.5 kms Time: 3.5 hours Rating: difficult (some steep narrow sections of foot track)

9.30 am July 28 Bucks Reserve, White's Orchard and the Mullum Mullum Creek

Explore this lesser known section of the Mullum habitat corridor including the wild, west facing slopes east of the creek. Note: there will be some off track walking to connect between tracks.

Distance: 4 kms Time: 2.5 hours Rating: difficult

Bookings open now <http://www.manningham.vic.gov.au/nature-walks-2016>

All distances and finishing times are approximate.

Ratings:

Easy – Flat or undulating well formed tracks/paths with low tripping hazards.

Moderate – May include some moderately steep or narrow sections or have higher tripping hazards.

Difficult – Includes steep and/or narrow sections, slippery sections, or high tripping hazards.

Bookings can be made online and are essential as places are limited. Bookings open 2 months before the walk date. www.manningham.vic.gov.au/nature-walks

The meeting place will be provided at the time of booking.

Please note that nature walks will be cancelled on a day of Total Fire Ban or extreme weather warning as Parks Victoria will close all local parks.

Work goes on at Frogland and the Pollinator Garden



BRIAN IS NOW a regular on the Frogland weeding, planting and maintenance team. Here he manages a smile despite the difficulties involved in breaking through old synthetic carpet that was used as a weed mat in the 1990s. The carpet no longer stops weed growth but the Bridal Creeper (*Smilax*) *Asparagus asparagoides* tubers become entangled in it and harder to dig out and it must be removed prior to planting.



It takes more than drizzle and chilly weather to stop Carolyn and Jason from digging more swales for flowering indigenous plants in the Pollinator Garden. The bees will be delighted come spring-time.

Carolyn is determined that this garden will be a bloomin' success and it is well on its way after just a year's time.

Linda



FOWSP MARKET TRAILER

Thanks to those who helped on Saturday May 7th 2016

Dianne & John Baird, Caitriona Young, Lyn Moore, Christine Andell, Jan Smids, Lyndy Gilbert and Ken Crook

Special thanks to **John Blake (to market) and Peter Curry (to nursery)** who transported the market trailer.

The Warrandyte market is held on the first Saturday morning of the month from 8.30 am to 12.30 pm at Stiggants Reserve. Volunteers are rostered in pairs to (man/woman) the FOWSP information trailer for just one hour.

If you are interested in being on the market roster for 2016 please contact **Jan Falconer 0419 872 096 email trailer@fowsp.org.au**
First timers are always paired with someone more experienced.

Next market dates are: Saturday June 4th and July 2nd



Fauna Survey Currawong Bush Park and nearby

On Wednesday 18th of May we were part of a nocturnal fauna survey team for Manningham Council. We started beside the Mullum Mullum Creek at Currawong Bush Park where we had seen many ring and brushy tailed possums and seen and heard many birds. We finished at 100 acres in Park Orchards where we were seeking autumn calling frogs in boggy ground. We found remnants of a yabby and a terrestrial crayfish and heard many frogs but they weren't seen. We also heard the call of a powerful owl. After walking for about an hour, we heard a soft "phut" above us and saw a sugar glider. We all gazed at him for a few minutes with our torches and then a second glider landed almost beside the first and nimbly scampered up the branch to jump and glide into the night. The first glider also ran higher up the tree and launched across our walking track to land on a tree about 30m away. A great finish to an interesting evening. *Lee and Graham*

I also took part in the first part of the survey along Mullum Mullum Creek. I most enjoyed seeing several Tawny Frogmouths in the trees, easier to see with our torches than they are in the daytime. As I needed to leave before the Hundred Acres section, I just knew they would be something special. Thank you for sharing this Lee and Graham.

These spotlighting evenings organised by Manningham Council were led by naturalist John Harris
Linda

Survival of the Unpalatable

The re-introduction of indigenous plants to Wagners' Pound Bend stone-fruit orchard began decades ago, but was resumed with renewed energy some four years ago. This site is now referred to as Lower Orchard Track - or simply The Lower Orchard. At the time of the earliest planting there were still some old peach and nectarine trees, but without care they sickened, died and decayed. What does remain from that earliest planting are some very tall Silver Wattles [*Acacia dealbata*] and lots of Kangaroo Apples [*Solanum lasiniatum*]. These latter are the progeny of the early re-introduced plants.

This early planting on the fertile, relatively well-watered alluvial terrace succeeded because kangaroo numbers were low in those days, and deer had not yet invaded the Warrandyte bush.

Today it is a very different story - with deer abounding and mobs of 'roos bounding, it is a case of survival of the unpalatable.



This twig in front of some well known FOWSPian legs, is all that is left of and *Acacia dealbata*.

The main survivors are Prickly Moses *Acacia verticillata*, Hop Goodenia *Goodenia ovata* and to a lesser extent, Hazel Pomaderris,



Most of the large shrubs currently seen in the Lower Orchard area are *Acacia verticillata* as seen here.

Pomaderris aspera, Snow[y] Daisy-bush *Olearia lirata* and River Bottlebrush *Callistemon sieberi*. One can only assume that these species are too prickly or too unpalatable for the kangaroos and deer.

Incidentally, deer will browse Sweet Pittosporum, whereas indigenous animals never do.

There are lots of other species surviving, but many of these plants are dwarfed or almost browsed to death - especially non-prickly wattles such as the Silver Wattle. [The foliage of the big Silver Wattles mentioned above is now well out of reach of these pesky browsers].

To overcome this browsing pressure we resorted to tall tree-guards, but as we discovered recently, these introduce a problem of their own - the plants, having been supported by the guards, tend to fall over once the guards are removed. To grow strong, plants need the stress of the wind to stimulate sturdiness - if they are staked or confined within tree-guards they do not receive this stimulus.

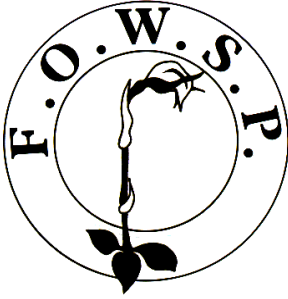


When the tall guards were removed from this Eucalypt it was decidedly floppy

Thanks to Melbourne Water we have now received a grant for some deer and kangaroo exclusion fencing for the Lower Orchard - all we are waiting for is for the contractual details to be sorted out between ourselves, Parks Victoria, Melbourne Water and the contractors.

One thing can be said in favour of the kangaroos and the deer: both species *are* palatable!

Gray



Print
Post
346802/0005

Postage
Paid
Australia

**REGISTRATION BY AUSTRALIA POST
PP 346802 / 0005**

If undeliverable please return to
Friends of Warrandyte State Park Inc.
P.O. Box 220 **Warrandyte, 3113**



Eucalyptus camaldulensis

River Red Gum

At the FOWSP nursery?

Well there is one that must have been planted many years ago. Josh says the nearest naturally growing *E. camaldulensis* would be significantly further downstream. This young tree is near the shed (see photo in email extra).

However some have been photographed and shown in our *Flora of Warrandyte* at Mount Lofty. Were these planted as well?

More common in similar habitat in the Warrandyte area are the Manna Gum *E. viminalis*. *Linda*

June 2016 Vol. 34 no. 5

PLEASE CHECK YOUR ADDRESS LABEL TO SEE IF YOUR SUBSCRIPTION IS DUE

FOWSP Membership Renewal Form

Name

Address

.....

Telephone no.

Email

Membership (family) \$30

Concession \$15

Newsletter by email (tick box)

Send to: FOWSP PO Box 220, Warrandyte 3113 or renew on the website www.fowsp.org.au with the option of direct deposit payment.

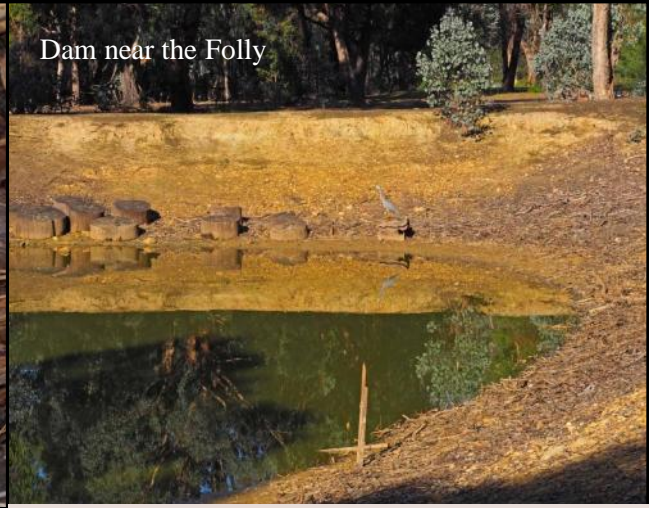
This newsletter is printed on recycled paper

Email photo bonus page Around the FOWSP nursery



Frogland pathway

Bruce Fuhrer says: 'The fungus is a *Gymnopilus* species. If it was growing on a tree stump or around a tree I would call it *Gymnopilus junonius*...The unusual nature of the gills is most likely due to interrupted development because of weather variations.

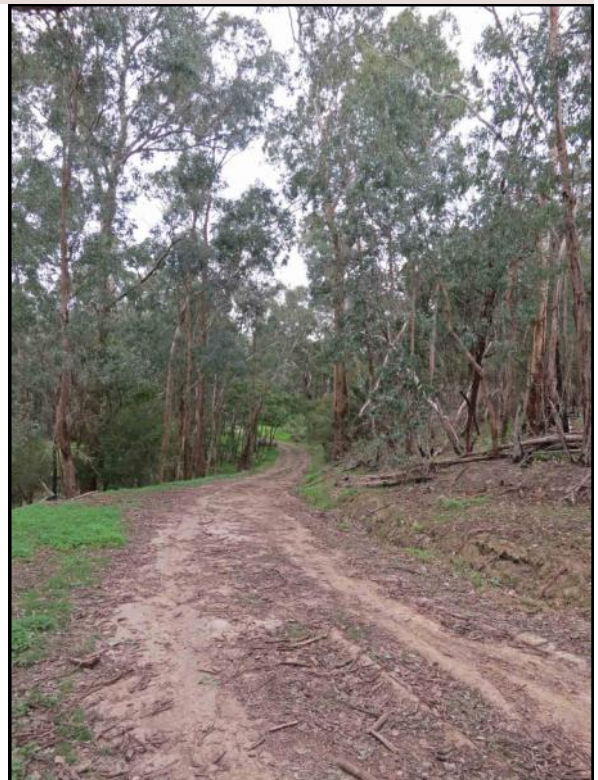


Dam near the Folly

This is the lowest I have seen the water level here.



Lone *Eucalyptus camaldulensis* at Pound Bend nursery. See back cover snippet



Track down to Lower Orchard see also p. 8 & 9.



An antherid moth *Chelepteryx chelepteryx* White stemmed Acacia moth above and right.

This male White-stemmed Acacia moth fluttered down onto the gravel in the nursery. Its feathery antennae indicate it is a male. Hind wings are not always this colourful.



Your photos can appear on this page (subject to space available) if you email them as follows: lindarogan@netspace.net.au