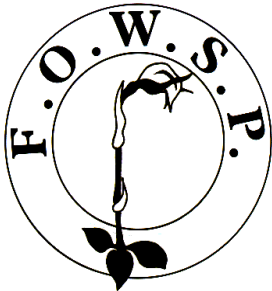


# Friends of Warrandyte State Park



## Newsletter

Website: [www.fowsp.org.au](http://www.fowsp.org.au)

Friends of Warrandyte State Park (FOWSP) Inc. PO Box 220 Warrandyte 3113  
 ABN 94170156655/Incorporation No. A0024890C

### Editor's Corner

WHILE FOWSPIANS soldier on in the very dry conditions, my guilty secret is that Peter and I escaped to absorb some of the big wet in far north Queensland. Some of our adventures have slipped into this newsletter on p. 4 and the email bonus photo page.

In the meantime, an important milestone has been reached on Gray and Janaya's Walert Creek project and a presentation was given to naturalists and interested locals at the Yarran Dheran Information Centre adjacent to the Mullum Mullum area. See p. 2.

Joan Broadberry is one of the fortunate people who has observed the Net-casting Spider in action and also caught it in the camera. She shares the experience and photos on p.3.



Charles had a big smile on his face on Thursday 31 January. Sadly shortly after this day, he became ill and was admitted to hospital. FOWSPIans all wish him a speedy recovery.  
 See also p. 8.

On p.7 Carolyn has some sad news and an important request to all readers.

On p.8 some of the recent celebrations at morning tea time along with our best wishes to Charles.

Lynda Chambers introduces us to one of the lesser known inhabitants of the FOWSP nursery on p. 9 and also Carolyn shows us how some local residents recycle housing.

Finally Linda's photo left shows many new babies that were recently welcomed into the nursery habitat. Can you tell the species?

*Linda*



*Are you receiving your Newsletter by email? If so watch for the message below which will appear on the email along with the link to the Newsletter when your membership subs are due within the next 70 days\*\*\**

Please note that, according to our records, your Membership is due to expire on (relevant date).  
 Please click on the link below to renew your Membership.

Of-course, if this matter has been attended to recently, please disregard.

**Deadline for April edition newsletter is  
 Fourth Friday 22 March 2019**

**contributions can be emailed to Linda Rogan [editor@fowsp.org.au](mailto:editor@fowsp.org.au)  
 or posted to PO Box 220, Warrandyte 3113**

**Regeneration of remnant forest- the Walert Creek Project**

The Yarran Dheran Advisory Committee asked FOWSP to visit their Information Centre to tell their Group about our Walert Creek project. This occurred on 16 February 2019.

*The project is led by Gray Ardern and undertaken by FOWSP with funding from DELWP. This project is located in Mullum Mullum Park - along bush tracks around the Walert Creek (near the Park Road portal to the tunnel). The project aims to restore and rehabilitate the site after a long lapse, and to restore habitat for the Mountain Bird Orchid and the Southern Toadlet. Work has included spraying and weed removal, with woody and other weeds being replaced by indigenous plants of local provenance. Fencing of sensitive areas will come later in 2019.*

Gray reports below:

Our former Contact Ranger, and mother of this project, Janaya O'Dempsey presented a slide show, our Treasure[r] Lyndy Gilbert prepared delicious refreshments, Linda Rogan's 'Before' photographs were up on the screen during the refreshment break and Gray led [sort of] a Walk and Talk.

Gay and John, of the Yarran Dheran Advisory Committee were fantastically organised, particularly on the technical side, so the show went off without a hitch.

The audience, kept to 20 in order to be a manageable size for a Walk-and-Talk, asked perceptive questions - not always easy to answer! - and demonstrated a deep pool of knowledge. I am quite sure I learned more from them than they did from me!



Rory samples Lyndy's delicious afternoon tea in the Yarran Dheran Information Centre



Janaya's sons Rory and Spencer assist by collecting Gray' flagging tape after the marked plants were discussed. Photo Janaya

I had visited the Grant site twice in the days before the event, to plan the walk - the second time to work out a less physically demanding route. I need not have done so, as the walk quickly became a more um... spontaneous? event. I had about as much control over it as I have over the TAG Team on our Walert Work Days!"

I had flagged a number of plants that I had previously been unable to identify, so I was delighted that Graeme Lorimer was able to reduce the number of question-marks buzzing around my head. Graeme also has an admirable ability to engage with children, and soon had them eating [*Coprosma quadrifida* 'currants'] out of his hand.

The event was a wonderful cooperative effort by the Yarran Dheran group, Janaya, the participants and your Committee members.

*Gray*



### Net-casting Spider in my Templestowe garden. Words and photos by Joan Broadberry

A COMMON species of spider found in gardens and bushland in Eastern Australia is *Deinopis subrufa*. In mid-January I recognised adult of this species in my Templestowe garden. It has several common names, one being Net-casting Spider. Its long, fawn-coloured body measures about 2cm with two small tubercles midway on each side. Its underside is orange-brown. By day Net-casting Spiders hide, facing downwards, with their long front and back legs held together, giving them a stick-like appearance. I first noticed *Deinopis subrufa* resting in plain view on the bricks of my house one morning (photo right). I had probably inadvertently disturbed it from its daytime hiding place.

These slender, long-legged spiders have eight eyes, two of which are enormously enlarged and face forward like headlights (photo below). They dominate the face, leading to another of the spider's common names, Ogre-faced Spider. Two much smaller eyes are located on each side of the head. The position of the other four eyes puzzled me initially until I read, "A Field Guide to Spiders of Australia" Robert Whyte and Greg Anderson p26. 'Two tiny black

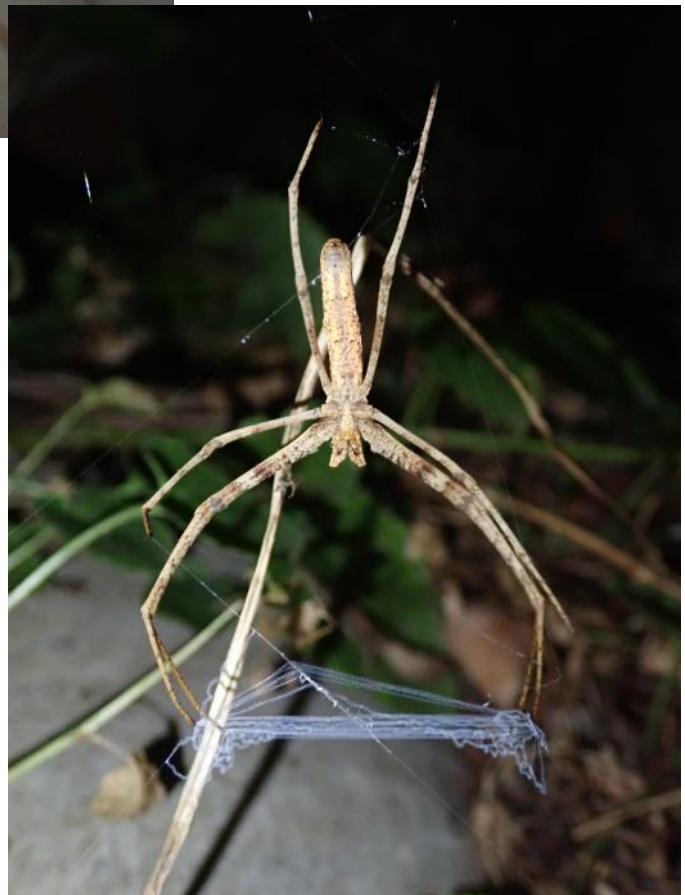


eyes below the huge ones are the middle eyes of the front row. The outside eyes of the front row are in the hairy knobs on the side of the face.'

*Deinopis subrufa*'s method of hunting is unique in the spider world. After dark the spider builds a rectangular scaffolding of fine silk and suspends itself close to the ground, head down. It then constructs a small rectangular net of thick, crinkled, bluish-white silk by moving its abdomen back and forth. The folded net is held by the tips of its two pairs of front legs. Its enormous eyes, 2 000 times more sensitive than the human eye, watch for move-

ment The net is generally positioned above a place where prey animals such as beetles, crickets or moths etc. are likely to pass. When a prey animal comes within reach, the spider, lurches forward, expands its net to two or three times its resting size and, with lightning speed, throws it towards the unsuspecting victim. The clinging, very elastic silk envelops the prey, which is then bitten, paralysed, wrapped and eaten.

After I had identified *Deinopis subrufa*, I waited impatiently until darkness fell. Would it make a net? About 10 pm, I was rewarded by seeing the spider with a crinkled, sky-blue net, and held at the corners by its front legs (photo right). This extraordinary hunting device is made of cribellate silk. The cribellum is a silk spinning organ from which the spider, hanging head up, combs out silk with a woolly texture. The whole thing looked to me for all the world like a skein of knitting wool stretched out waiting to be rolled into a ball. Although I observed it for some time I did not see the net thrown. However, about nine years ago, I watched a similar spider in my sister's garden and to my surprise and delight the net was launched. It was a never-to-be-forgotten field naturalist moment.



**Up North where things are much wetter**

Perhaps it's a case of "be careful of what you wish for". While much of Queensland was and still is, suffering severe drought, the north (especially the Townsville area) and some inland areas are in flood.

Peter and I were visiting the Atherton Tableland and luckily for us, we arrived after the big rain in Cairns and didn't need to go south toward Townsville.

I have to admit I greatly enjoyed spending time in the lush green vegetation. Hope you will enjoy these photos here.

Perhaps the most exciting moment for me



came as I walked up the pathway to Birdwatcher's Cottage in Wondelba. I was turned toward the stairs when I became aware of a large black presence in the corner of my right eye. Without turning to look I quietly ascended the stairs with my heart in my mouth. Only then did I turn to take a good look at this nearly full grown cassowary. The stick figure represents my approximate location when I first sensed this giant bird. I was in equal parts thrilled and wary as I called for Peter to bring out the camera. We learned this young cassowary was first seen on this property in March 2018 and is now called Mr. March. However sex is not yet clear (at a distance) so it may turn out to be Miss March.



Another thrill was watching this Common Tree Snake first investigate rubbish left on a nearby picnic table, then magically ascend the trunk of a tree and disappear into the canopy.

*Linda*

See also the email bonus photo page.

**TAGS** (Thursday activity groups)

**TAGS meet at the nursery at 9.00 am for a 9.15 am departure. Please remember to wear appropriate footwear and clothing for the weather, and please bring your own filled water bottle. Contact number: 0408 317 327**

**Difficulty ratings:**

**Easy:** Even terrain, some light lifting, kneeling and bending involved. Few tripping hazards.

**Moderate:** Uneven terrain, light to heavy lifting, kneeling and bending involved. Tripping hazards present.

**Difficult:** Steep terrain, light to heavy lifting, working in over-grown areas and lots of bending. Many tripping hazards and slippery surfaces present.

<b>Thurs</b>	7 Mar	9:00-12:00	Walert Creek	Maintenance	Moderate	FOWSP
<b>Thurs</b>	21 Mar	9:00-12:00	Endeavour Bank	Fencing	Difficult	FOWSP
<b>Thurs</b>	4 April	9:00-12:00	Walert Creek	Maintenance	Moderate	FOWSP
<b>Thurs</b>	18 April	9:00-12:00	4th Hill Gold Memorial	Woody weeding	Moderate	FOWSP & ACCA

Check the website for any changes at <http://fowsp.org.au/activities.php>

**Please note TAGS and activities will be cancelled on Total Fire Ban days or when weather conditions are deemed hazardous.**



FOWSP COMMITTEE 2019			OTHER FOWSP CONTACTS	
<b>Artur Muchow</b>	<b>0415 383328</b>	<b>Secretary</b>	<b>Nursery Manager</b> Josh Revell	<b>0408 317 327</b>
			<b>Nursery Phone</b>	<b>email nursery@fowsp.org.au</b>
<b>Lynda Gilbert</b>	<b>9844 0106</b>	<b>Treasurer and Membership</b>	<b>Park Office</b>	<b>03 8427 2132</b>
<b>Linda Rogan</b>	<b>9435 5806</b>	<b>Newsletter editor</b>	<b>Newsletter assist and Librarian</b>	
	<b>editor@fowsp.org.au</b>		<b>Gloria Moore</b>	<b>0402 285005</b>
<b>Annette Lion</b>	<b>0414-249-729</b>	<b>Facebook Coordinator</b>	<b>Wildlife Rescue</b> Adriana Simmonds	<b>0416056897</b>
<b>Gray Ardern</b>	<b>0418 190261</b>		<b>Market Trailer</b> Jan Falconer	<b>9844 1226 or 0419 872 096</b>
				<b>email trailer@fowsp.org.au</b>
<b>Lisa Jenkins</b>	<b>0431 840 415</b>		<b>Manningham Council Rep</b>	
			<b>Cathy Willis</b>	<b>0427 660 651</b>
<b>Carolyn Noel</b>	<b>0409 901441</b>		<b>Webmaster</b>	
			<b>Jason Patton</b>	<b>0402 121838</b>
				<b>jason@parau.com</b>
<b>Kelvin Watkins</b>	<b>0488 039 774</b>		Website: <a href="http://www.fowsp.org.au">www.fowsp.org.au</a>	
<b>Jeff Cranston</b>	<b>0418 396 647</b>		FOWSP general enquiry number 1300 764 422	
	<b>legality@bigpond.com</b>			

The views and opinions expressed in this publication are those of the authors, and do not necessarily reflect those of FOWSP

**Newsletter Team this month:** Linda Rogan,  
Gloria Moore  
Mel Coupar (Line drawings)

**Next Committee Meeting**  
**Date:** Tuesday September 11th 2018  
**Venue:** Education Centre, Pound Bend  
**Time:** 19:30 pm sharp

## Manningham City Council Environment Seminars



**The Environment Seminars are held on the first Wednesday of the month.**

Many of the seminars will be complemented with field trips to allow broader education on the topics. Bookings are not required for the evening seminars; however, bookings are essential for the field trips. Due to the popularity of field trips, bookings are limited to two field trips per person for the series. Attendance is required for the corresponding seminar to be eligible to attend and keep your booking for field trips.

**Seminar Venue:** River View Room, The Grand Hotel, Warrandyte

**Time:** Please arrive at 7.20pm for a 7.30pm start

**Enquiries:** 9840 9326

**Wednesday 6 March Deep Time Dreaming: Uncovering Ancient Australia.** This seminar charts the revolution in Australia's timescale over the past half-century. The speaker, historian Billy Griffiths, is the author of *Deep Time Dreaming: Uncovering Ancient Australia* and follows the activities of some of Australia's pioneering archaeologists. He investigates what it means to live in a place of great antiquity, with its complex questions of ownership and belonging.

**Wednesday 3 April Bats - fascinating creatures of the night.** Lindy is internationally recognised as an expert on the ecology and conservation of insectivorous bats. In this seminar Lindy will share her extensive knowledge and enthusiasm for microbats, explaining their ecology, habitat requirements and fascinating life history. This seminar will cover local species and what they need to survive. On the night following the seminar we will take a riverside walk with ultrasonic eavesdropping equipment to 'see' how many species can be detected. If you plan to join the river walk, please bring a torch and wear suitable shoes and clothing for the weather conditions on the night.

Please note the seminars and field trips will be cancelled in the event of extreme weather, including a Total Fire Ban or Code Red Fire Danger Day.

## FOWSP THURSDAY PROGRAM

We meet for propagation and other nursery activities every Thursday morning at 9.30 am at the Warrandyte State Park depot, Pound Bend Road, Warrandyte (Melway 23 C10), unless otherwise stated below. Propagation takes place from 9.30 am to 12.30 midday.

No prior experience necessary -  
There is always someone available to show you the ropes.

### **NURSERY OPENING HOURS**

The nursery is open for plant sales every Thursday.

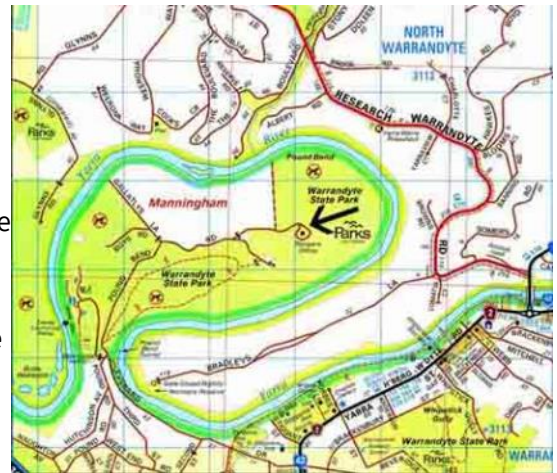
9.30 am to 12.30 pm and

the first Saturday of every month, 9am to 2pm (to coincide with the Warrandyte Market) April to November only.

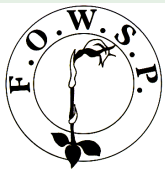
**Closed Christmas and New Years days.**

**Also closed to customers and volunteers on days of severe weather and on Total Fire Ban Days**

**Prices:** Members \$2.00      Non-members \$2.50



Copyright 2008 Melway Publishing Pty Ltd  
Reproduced from Melway Edition 36 with permission



## FOWSP/Manningham Thursday nature walks



This series of nature walks will explore various sections of the natural areas of Manningham. Each walk is paced to allow participants to enjoy and appreciate the natural beauty of the area.

Bookings are essential as places are limited. Bookings will open two months before the walk date.

The meeting point for each nature walk will be provided at the time of your booking. All walk durations are approximate.

Please wear appropriate clothing for the weather including a hat and sturdy footwear. Bring a water bottle and snack.

### **Thursday 28 March, 9.30am Waterwatching in the Mullum Mullum Creek**

On our downstream journey we will assess the water quality in several locations before enjoying the return stroll up the valley to our starting point.

Distance: 5km    Time: 3 hours    Rating: Moderate (mostly easy)

### **Thursday 2 May, 9.30am (note: date change due to Anzac Day) Longridge, Nilja and Seawinds**

Enjoy magnificent views, a beautiful section of river rapids and a walk through historic farming properties now regenerating with native plants and habitat for native animals.

Distance: 3.5kms      Time: 2.5 hours      Rating: Moderate to difficult

Ratings:

Easy – Flat or undulating well formed tracks/paths with low tripping hazards.

Moderate – May include some moderately steep or narrow sections or have higher tripping hazards.

Difficult – Includes steep and/or narrow sections, slippery sections, or high tripping hazards.

Bookings can be made online and are essential as places are limited. Bookings open 2 months before the walk date. [www.manningham.vic.gov.au/nature-walks](http://www.manningham.vic.gov.au/nature-walks)

The meeting place will be provided at the time of booking.

Please note that nature walks will be cancelled on a day of Total Fire Ban or extreme weather warning as Parks Victoria will close all local parks.

### Vale Billy Wallaby of Pigeon Bank Road

This is a sad story but hopefully one that will stimulate all FOWSPIANS to be more proactive about environmental issues.

Recently, our beloved wallaby, known by some as Billy Wallaby, was knocked down and killed in Pigeon Bank Road. Billy was more than twenty years old. We all knew him by the large distinctive nick out of his ear and his delight in grazing our Roses, Camellias and fruit trees.

Billy used to have some girlfriends but none have been seen around here for quite some time. It seems that Billy may have been the last of his kind to inhabit the suburban gardens on the north side of Pigeon Bank road.

Which leads me to my point; the bushland and much of the wildlife in Warrandyte is fast disappearing.

Much of the stress placed on the fauna and flora is created by ever increasing suburbanization and the loss of native vegetation. Over a year ago Cam Beardsall told us, "10 per cent of all the orchid species that were previously found in this area have been lost in the past 40 years and that this is despite all the best efforts available at the time."

Many of you will be aware of the recent push by some in Manningham Council and Nillumbik Shire Council to change rules around development via C117 to allow more and more houses and business ventures to squeeze into the area.

It is important those who care about these issues continue to present their cases individually and as groups, to relevant councils.

Any within council who may share these concerns, can do little if local residents appear to be indifferent or turn a blind eye to illegal clearing, cutting down of native trees and the growth of noxious weeds in the area. These all contribute to the loss of habitat. If you see something of environmental concern, report it to the appropriate authority and find out how you can help other groups that are likewise concerned.

Recently the committee at FOWSP voted to be more outspoken regarding important environmental issues but we can't do it on our own. We are asking all members of FOWSP to become more engaged and active around these issues too. You are the eyes and ears in this community we hope you will join us in trying to maintain the beautiful environment we have and prevent further losses.

*Carolyn*



### FOWSP MARKET TRAILER

Thanks to those who helped out on Saturday 2 February 2019  
***Diane and John Baird, Jeff Cranston, Marion Thomson  
 Christine Andell, Marie Krause, Lyndy Gilbert and Ken Crook***

Special thanks to ***Artur Muchow*** who transported the market trailer.



The Warrandyte market is held on the first Saturday morning of the month from 8.30 am to 12.30 pm at Stiggants Reserve. Volunteers are rostered in pairs to (man/woman) the FOWSP information trailer for just one hour.

If you are interested in being on the market roster  
**please contact Jan Falconer 0419 872 096 email [trailer@fowsp.org.au](mailto:trailer@fowsp.org.au)**  
*First timers are always paired with someone more experienced.*

**Next market dates are:** Saturdays, 2 March, 23 March for Warrandyte Festival, 6 April 2019



**Birthdays and celebrations at FOWSP nursery**



Charles is known for his cheery and helpful nature around the nursery. He displayed his best smile while watching the lighting of the ceremonial birthday candelabra to celebrate his 90th birthday. We are currently missing him while he is on the road to recovery from a sudden illness and is currently in rehab. We wish him a speedy and complete recovery.



Caitriona's birthday was also an occasion for celebration although no year number was offered.  
Photos above Linda  
Lyndy's rose petal covered cake for Valentines Day  
Photo Gloria





**Mole Crickets: 10 things you may not know**

By Lynda Chambers

The velvet mole cricket (*Gryllotalpa australis*) is often found the FOWSP nursery's soil pile.

The forelimbs are used as 'shears' and 'picks' to excavate and shear grass roots.

Hearing is in the form of the receptive organ, the tympanum, which is located on the front limbs.

They attract the opposite sex by tapping one another's antennae and by using sounds produced by their forewings.

The female constructs subterranean chambers the size and shape of a hen's egg.

The chamber is used as a retreat as well as the brood chamber for the eggs and is close enough to the surface so that the sun's warmth can pass through and incubate the eggs.

They may lay as many as 400 eggs.

The eggs are protected by the female until they hatch (for approximately 2 weeks).

They have well developed wings and have been known to fly into electric lights on summer nights.

They are pretty cute!



Velvet mole cricket uncovered while filling plant tubes with soil.  
Image: LE Chambers.



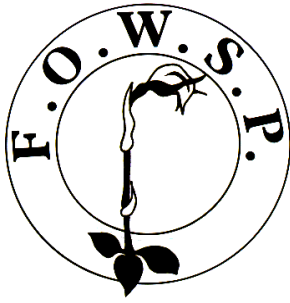
**Carolyn discovers recycled housing**

Carolyn was admiring these lovely pottery-like vacant mud wasp homes when she noticed that someone else had moved in.

Looking back on similar funnel shaped entries I had placed on BowerBird, I would guess the new home makers would most likely be *Paralastor* species, one of many mud wasps.

Carolyn will keep watching to see if she can confirm this identity.

*Linda*



Print Post  
346802/0005

Postage Paid  
Australia

**REGISTRATION BY AUSTRALIA POST  
PP 346802 / 0005**

If undeliverable please return to  
Friends of Warrandyte State Park Inc.  
P.O. Box 220 **Warrandyte, 3113**



**Australian Tiger *Ictinogomphus australis***

My first Australian Tiger seen near Kuranda Queensland. It is seen along the northeast coast but at this stage not in Victoria.

I needed gum boots or else Peter with the 300mm lens in order to get photos of this large and rather dominant dragonfly.

In Australia there are three species included in the Linderiidae family. They are the Australian, the Pilbara and the Cape York Tiger. Anyone for an Australian tiger-hunt?

*Linda*

**March 2019 Vol. 37 no. 2**

**PLEASE CHECK YOUR ADDRESS LABEL TO SEE IF YOUR SUBSCRIPTION IS DUE**

**FOWSP Membership Renewal Form**

Name .....

Address .....

.....

Telephone no. ....

Email .....

Membership (family) \$30  
Concession \$15

Newsletter by email (tick box)

Send to: FOWSP PO Box 220, Warrandyte 3113 or renew on the website [www.fowsp.org.au](http://www.fowsp.org.au) with the option of direct deposit payment.

**Newsletter by email? You will receive notification along with the email link when your membership expires within the next 70 days.**



**Email photo bonus page**

**More Photos from Atherton Tablelands and Cairns**

First three Flutterers and a longicorn: Clockwise from upper left Jewel Flutterer, Yellow-striped Flutterer, Graphic Flutterer and a Prionid beetle possibly *Rhipidocerus australasiae*.



Below left, my best photo of Mr. March and Peter's long lens portrait of the Common Tree Snake.  
*Linda*



**Your photos can appear on this page (subject to space available) if you email them as follows:  
editor@fowsp.org.au  
Tell us what you know about the photos.**



Blue Skimmer *Orthetrum caledonicum*  
Although this dragonfly was photographed  
in Queensland it can be found in War-  
randyte and all of mainland Australia  
*Linda*