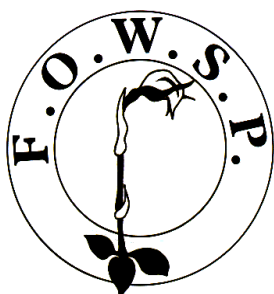


# Friends of Warrandyte State Park



## Newsletter

Website: [www.fowsp.org.au](http://www.fowsp.org.au)

Friends of Warrandyte State Park (FOWSP) Inc. PO Box 220 Warrandyte 3113  
ABN 94170156655/Incorporation No. A0024890C

### Editor's Corner

Winter has been a productive time for FOWSPians producing our unique indigenous plants and getting many planted out in the park. Don has kindly reported on the TAGers activities including a housing project on pp. 2, 3 and 7.

Cathy features some of the colourful indigenous plants now available and brings us some positive feedback pp. 4,5,6. She also shares a duck puzzle p.8. Perhaps you can explain for us.

I was surprised to realise that this year FOWSP will celebrate our 40th year of existence. Some of you will be lucky enough to remember the 30th, as I do.

Winter clouds and spring activities have inspired the photos on the last three pages.

Please remember to keep sending items for the November newsletter and enjoy this one.

*Linda Rogan*



Mid-level housing being carefully built by Barrie and David but for whom? See p. 2

### FOWSP 40<sup>th</sup> Anniversary Party & AGM Sunday 13 November 2022

At Pound Bend nursery

The AGM will be held at 3.30pm and run for 30 minutes

Followed by the **40th Anniversary Celebration**

More details in November

**Deadline for November edition newsletter is**

**Friday 21 October 2022**

contributions can be emailed to Linda Rogan [editor@fowsp.org.au](mailto:editor@fowsp.org.au)  
or posted to PO Box 220, Warrandyte 3113



### Building on the Dunnart Affordable Housing Estate 4 August 2022



Dunnart home basic level



Luxury concrete slab apartment



Completed home with landscaping

This enjoyable day with ranger Phil to One Tree Hill involved planting, weeding and new homes for the Slender-tailed Dunnart. We planted hairy mint-bush *Prostanthera hirtula*, mountain mirbelia *Mirbelia oxylobioides* and mountain grevillea *Grevillea alpina*, the latter of which was flowering in spectacular profusion in an area adjacent to one enclosure (Photo p.9). It provided a contrast to the plentiful flowering *Acacia genistifolia*.



Slender-tailed Dunnart Photo from Cam Beardsell



A previous construction that has clearly been occupied

Phil showed us the construction method for Dunnart housing that has proved to be most successful. This included diverting possible runoff from the downhill slope for a dry home, providing adequate room inside for growing families, and combining dry local grasses with coconut fibre for making comfortable sleeping quarters, and a nice entrance. Seemed to us to be moving towards more luxury accommodation than cheap housing!

See also p. 9 for further information copied from the FOWSP newsletter April 2019.



### Chaim Court revisited 18 August 2022

Our TAG of 18th August was to a regular site on the Mullum Mullum Reserve, at Chaim Court. This former house site has been replanted and visited by Parks and ourselves regularly, with a significant gap due to Covid.

We were pleased to see the 4-year-old planting pre-dominantly *Acacia stictophylla* and *Themeda* had progressed well.

The plantings benefitted from weeding and restoring the area



Phil showing the group the previously planted *Platylobium infecundum*



Healthy display of Dandenong Ranges cinnamon wattle *Acacia stictophylla*, myrtle wattle *A. myrtifolia*, white blooms of *Epacris impressa* and mealy stringybark *Eucalyptus cephalocarpa* in the enclosure.

around the bike track which had been put through, plus further planting of trailing hibbertia *Hibbertia empetrifolia* and the Powelltown correa *Correa reflexa* var. *lobata*.

In addition, we ventured to the enclosures in the reserve, where we added a few precious specimens of the endangered famine flatpea *Platylobium infecundum*.



### Brightening up your garden in spring

The northeast hills of Melbourne are renowned for their colourful wildflowers in spring. The FOWSP Nursery grows a wide variety. Here are just a few the staff have told me will be available in October. Two are bush tucker and the third is a nationally endangered species – all worth having in your garden.

**Bulbine Lily** *Bulbine bulbosa* is an attractive tussock with fleshy leaves. It can grow to about 50cm tall and 30cm wide, this may take several years. Bulbine Lilies like moist soils (or watered gardens), don't mind heavy clay, and can grow in full sun or part shade. When the soil dries out, they die back to a corm over summer and resprout in late autumn. In watered gardens they will continue to grow year-round. The corms are said to be the sweetest of the native lilies, best roasted or steamed, and are a good source of calcium and iron. I'd prefer to enjoy the tall spray of yellow star flowers during spring and early summer. If conditions are right, it will self-seed readily.

**Yam Daisy** *Microseris walteri* is a herb primarily found in dry forests. The rocky hills of Warrandyte and surrounds are its perfect habitat. It has a rosette of narrow leaves and flower stems to 50cm. These bow their heads shyly when in bud and stand tall when the bright yellow daisy flower opens in mid spring.



Bulbine Lily *Bulbine bulbosa* (Continued on page 5)

#### **TAGS** (Thursday activity groups)

**TAGS meet at the nursery at 9.00 am for a 9.15 am departure. Please remember to wear appropriate footwear and clothing for the weather, and please bring your own filled water bottle.**

**Contact number: 0408 317 327**

#### **Difficulty ratings:**

**Easy:** Even terrain, some light lifting, kneeling and bending involved. Few tripping hazards.

**Moderate:** Uneven terrain, light to heavy lifting, kneeling and bending involved. Tripping hazards present.

**Difficult:** Steep terrain, light to heavy lifting, working in over-grown areas and lots of bending. Many tripping hazards and slippery surfaces present.

6/10/2022	Frogland	LINDA/ MARIE	Ixia removal, general maintenance	Easy-Moderate
13/10/2022	Pauline Toner Reserve	PHIL	Cassinia thinning, woody weeds, grassy weeds.	Easy-Moderate
20/10/2022	Link Track/ - Craig/Beckett Rd	ROBYN	Weeding, maintenance	Easy
27/10/2022	Morrison's	PHIL	Disa and Serrated patrol.	Easy-Moderate
3/11/2022	Naughton Avenue	GRAY	Woody weeds - pittos, polygala, boneseed	Easy

Check the website for any changes at <http://fowsp.org.au/activities.php>

**Please note TAGS and activities will be cancelled on Total Fire Ban days or when weather conditions are deemed hazardous.**

FOWSP COMMITTEE 2022			OTHER FOWSP CONTACTS	
<b>Artur Muchow</b>	<b>0415 383328</b>	<b>Secretary</b>	<b>Nursery Manager</b>	<b>Josh Revell</b>
			<b>Nursery Phone</b>	<b>0408 317 327</b>
			<b>email nursery@fowsp.org.au</b>	
<b>Lynda Gilbert</b>	<b>9844 0106</b>	<b>Treasurer and Membership</b>	<b>Park Office</b>	<b>03 8427 2132</b>
<b>Linda Rogan</b>	<b>0491 112 692</b>	<b>Newsletter editor</b>	<b>Newsletter assist and Librarian</b>	
<b>editor@fowsp.org.au</b>			<b>Gloria Moore</b>	<b>0402 285005</b>
		<b>Facebook Coordinator</b>	<b>Carolyn Noel</b>	<b>0409 901441</b>
<b>Gray Ardern</b>	<b>0418 190261</b>		<b>Market Trailer Jan Falconer</b>	
			<b>9844 1226 or 0419 872 096</b>	
			<b>email trailer@fowsp.org.au</b>	
<b>Lyn Moore</b>	<b>0409 683 041</b>	<b>Wildlife rescue Victoria</b>	<b>Webmaster</b>	
<b>lynm333g@gmail.com</b>		<a href="https://www.wildlifevictoria.org.au/contact-us">https://www.wildlifevictoria.org.au/contact-us</a>	<b>Jason Patton</b>	<b>0402 121838</b>
			<b>jason@parau.com</b>	
<b>Kelvin Watkins</b>	<b>0488 039 774</b>		Website: <a href="http://www.fowsp.org.au">www.fowsp.org.au</a>	
<b>Jeff Cranston</b>	<b>0418 396 647</b>	<b>Staff Representative</b>	FOWSP general enquiry number	
<b>legality@bigpond.com</b>			1300 764 422	
		<b>Lynda Chambers</b>		
		<b>0466 274421</b>		
		<b>phenogist@gmail.com</b>		

The views and opinions expressed in this publication are those of the authors, and do not necessarily reflect those of FOWSP

**Newsletter Team this month:** Linda Rogan,  
Gloria Moore, Lyn Moore

#### Next Committee Meeting

**Date:** Tuesday 11 October 2022

**Venue:** Education Centre, Pound Bend

**Time:** 19:30 pm sharp

(Continued from page 4)

**Yam Daisy**  
*Microseris walteri*

This species was separated from Murnong *Microseris lanceolata*, which has fleshy, branching, suckering tubers and flowers over summer in the

Alps in Victoria. Our Yam Daisy has a much smaller tuber that is replaced annually. In other areas of the state they may have much longer or fleshier tubers. All are good eating. Again, I would prefer to enjoy a mass planting of their sunny, happy flowers.



(Continued on page 6)



## FOWSP THURSDAY PROGRAM

We meet for propagation and other nursery activities every Thursday morning at 9.30 am at the Warrandyte State Park depot, Pound Bend Road, Warrandyte (Melway 23 C10), unless otherwise stated below. Propagation takes place from 9.30 am to 12.30 midday.

No prior experience necessary -  
There is always someone available to show you the ropes.

### **NURSERY OPENING HOURS**

The nursery is open for plant sales every Thursday.

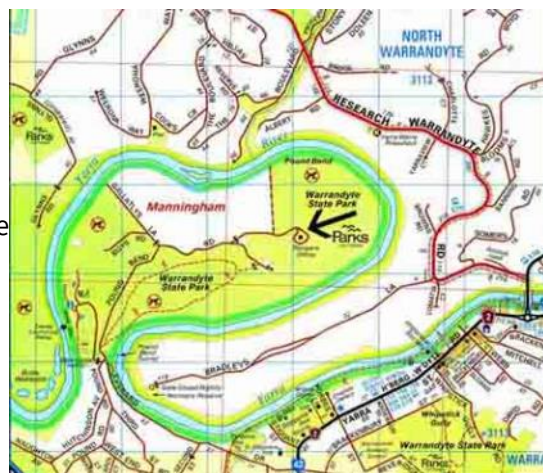
9.30 am to 12.30 pm and

the first Saturday of every month, 9am to 2pm (to coincide with the Warrandyte Market) April to November only.

**Closed Christmas and New Years days.**

**Also closed to customers and volunteers on days of severe weather and on Total Fire Ban Days**

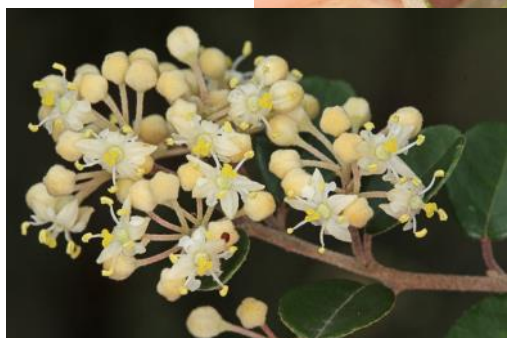
**Prices:** Members \$2.00      Non-members \$2.50



Copyright 2008 Melway Publishing Pty Ltd  
Reproduced from Melway Edition 36 with permission

(Continued from page 5)

**Round-leaf Pomaderris *Pomaderris vacciniifolia***



(Linda's photos above from Queenstown Cemetery spring 2014) This is a shrub classified as nationally endangered (i.e. considered in danger of going extinct in the wild). It is only found in a small area of Victoria – nowhere else, including in the north east hills of Melbourne, mostly in the upper

catchments of the Plenty, Yea and Yarra Rivers. It occurs naturally in one location in North Warrandyte and has been widely planted to bolster the local population. Preferring moist sheltered sites in the wild, in my experience it is quite forgiving and tolerant in a garden situation. Locally it rarely gets more than 2.5m tall, and loves to be pruned, so great for an informal hedge or screen planting. It has smallish dark green rounded leaves, a perfect foil for massed small creamy flowers in spring. A very attractive garden shrub that you can also get a glow out of planting for its future survival.

**Visit the nursery in October for these and the usual great range of plants they have to offer.**



### **TAGs end of August and early September Endeavour Bank**

Following the massive National Tree Day planting, TAGers revisited this site to check on the over 600 plants to ensure they were surviving and had secure guards, finding only minimal tasks to do.

In addition, we added some more plants to the riverside.

### **Longridge**

After another long absence due to Covid shut-downs, we returned to continue our efforts restraining wayward *Agapanthus*, invasive lilies and freesias.

Seeking to restore some of the original flora, we also planted in excess of 100 *Pomaderris* species in the 'old cottage' enclosure and nearby gully. Photo.



Ian, a new TAGer, securing a guard on a NTD planting at Endeavour Bank



Belinda with Ian, Brian and David showing off our completed planting at Longridge





### Duckling puzzle from Cathy Willis

It was mid-September, baby duckling season. I was walking around a large Warrandyte property with the owner admiring the previous revegetation success and discussing plans for next year's extension to the plantings.

Unwittingly we disturbed a pair of wood ducks in the grass beside the dam. Behind them waddled eight or nine very tiny ducklings. One of the adults acted as a decoy, strutting around all fluffed up, while the other shepherded the flock into the dense sedges fringing the dam. We sat down on a log to let them settle. They were soon all reunited in the centre of the dam looking quite serene.

Suddenly, out of the sedges another adult appeared with one duckling following – the same size as the family of ducklings. The parent ducks got very agitated and vocal, then swam towards the single duck and duckling with their whole family in tow. There was a bit of maneuvering and chattering, then in an instant they absorbed the single duckling into their family and headed off back to the safety of the sedges. The lone adult did a couple of laps around the centre of the dam looking a bit awkward, then flew off.

We humans looked at each other and said, 'what happened then??' Had the lone duck previously kidnapped a duckling from the family? Had the lone duck found a lost duckling and brought it home? Were the adults a threesome?? What had all the chattering been about? We'll never know for sure, but if anyone has an explanation, **please send it in for the next newsletter.**

Cathy also has a message from Anthony North ... 'he asked me to pass on how impressed he is with the quality of plants he buys from you (FOWSP nursery). He has bought 1000s over many years and says there is extremely minimal loss, and the vast majority thrive. This includes 100s of reveg plants in paddocks previously occupied by horses, 1000s of cells of wallaby and weeping-grass lawn, several spectacularly colourful rockery beds around his house and pool, and assorted small shrubs inside a large pool enclosure.' All look fantastic. Congratulations to all.



Excerpt from **Affordable Housing for Dunnarts April 2019**

Evidently the One-Tree Hill population (of slender-tailed dunnart) is a unique outlier of a predominantly dry-country species, which makes its preservation all the more urgent. Apparently, their numbers increase in the years after fire - the fire causes grasses to rejuvenate, flower and seed; and fire also causes woody plants to germinate, grow and flower. All of this renewal of the vegetation attracts the insects on which the dunnarts feed; the dunnarts thrive and greatly increase in number. As the plants senesce they become less productive, fewer insects are attracted, and the dunnarts' numbers fall again. For this reason, it is important to monitor both the dunnart numbers and the condition of the vegetation, to schedule a careful burn in order to stimulate rejuvenation of the vegetation. See also p. 2.

**Update on Dunnart Housing Project 2022 from Ranger Phil Rance**

The herbivore exclusion fence was constructed through a DELWP grant last year in June, primarily for our Slender-tailed Dunnart recovery program. This is the 5th fence in a row along Beardsell Track.

All have had eco-burns conducted within them at different times over the last two decades giving a mosaic of fire intervals. The timing has been carefully chosen to promote the shrub layer, rejuvenate wallaby grass and re-set the fire interval to suit dunnart recovery. They prefer an early to mid-fire succession due to effect on grasses and an associated invertebrate population spike.



Do you remember our 30th Anniversary Celebration?

If you do, you will want to come to our 40th on **Sunday 13 November 2022**

At Pound Bend nursery  
The AGM will be held at 3.30pm and run for 30 minutes

Followed by the  
**40th Anniversary Celebration**

**More details in early November**



**The Aussie Bird Count is back**

**17-23 October 2022**

SEE:

<https://aussiebirdcount.org.au/>





## Mammatus clouds

This photo was taken on the 4th August 2022 near the Merri Creek by Kathryn James. The clouds are unusual and are known as mammatus clouds. They show a cellular pattern of pouches hanging underneath the base of a cumulonimbus rain cloud. The name is derived from the Latin mamma (meaning "udder or breast").

The distinct "lumpy" undersides are formed by cold air sinking down to form the pockets, contrary to the puffs of clouds rising through the convection of warm air.

*Joan Broadberry*



## A throng of blunt greenhoods

You are unlikely to see more blunt greenhoods *Pterostylis curta* per square metre than these photographed by Don on a private property near a TAG activity on 18 August 2022.

## Are your subs due??

**Please check the message on the email you receive with the newsletter link** . If subs are due soon a message such as below will be seen in the email.:

'Please note that, according to our records, your Membership is due to expire on . Please click on the link below to re-new your Membership.

[http://fowsp.org.au/membership.php?member\\_id=&membership\\_renewal=Yes](http://fowsp.org.au/membership.php?member_id=&membership_renewal=Yes)

Of course, if this matter has been attended to recently, please disregard.'

## FOWSP Membership Renewal Form

Name .....

Address .....

.....

Telephone no. ....

Email .....

Membership (family)   \$30  
Concession               \$15

Newsletter by email

Send to: FOWSP PO Box 220, Warrandyte 3113 or renew on the website [www.fowsp.org.au](http://www.fowsp.org.au) with the option of direct deposit payment.



### Email photo bonus page

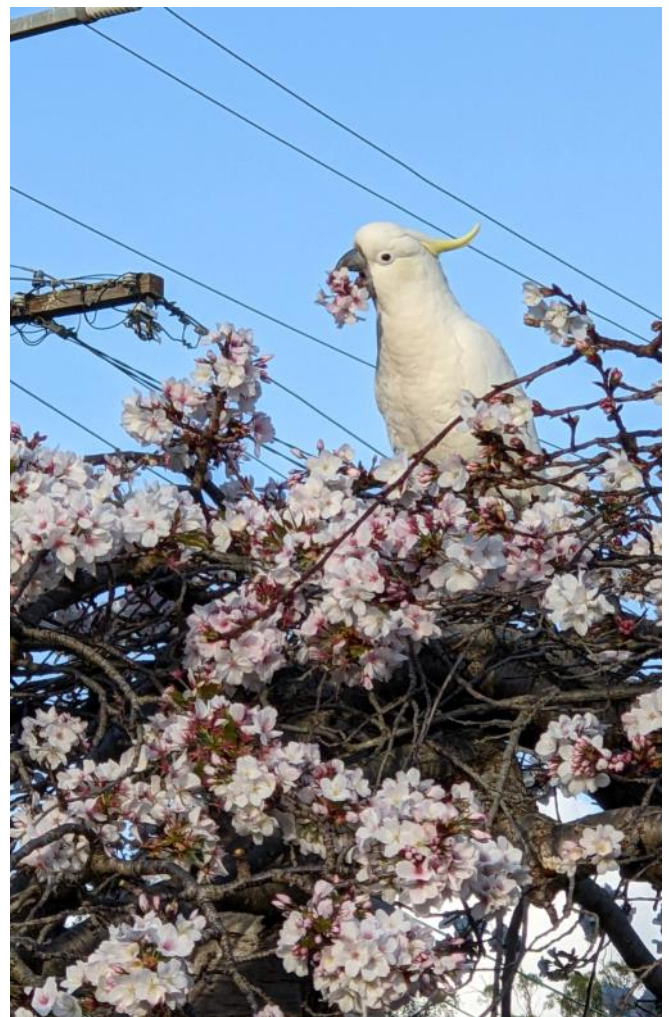
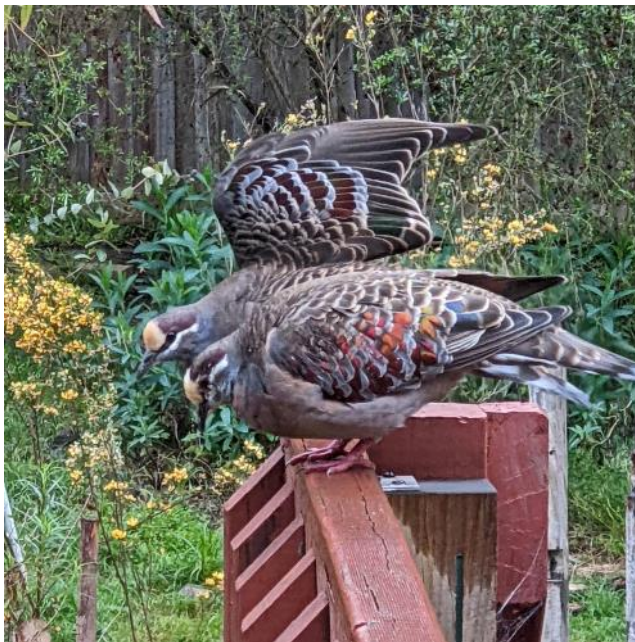


The *Hovea linearis* (left) was in full bloom and caught Joy's eye as her group walked though Haslem's Track. Not to be overlooked were the Austral bears-ear *Cymbonotus preissianus* also seen that day (below). Thank you Joy.



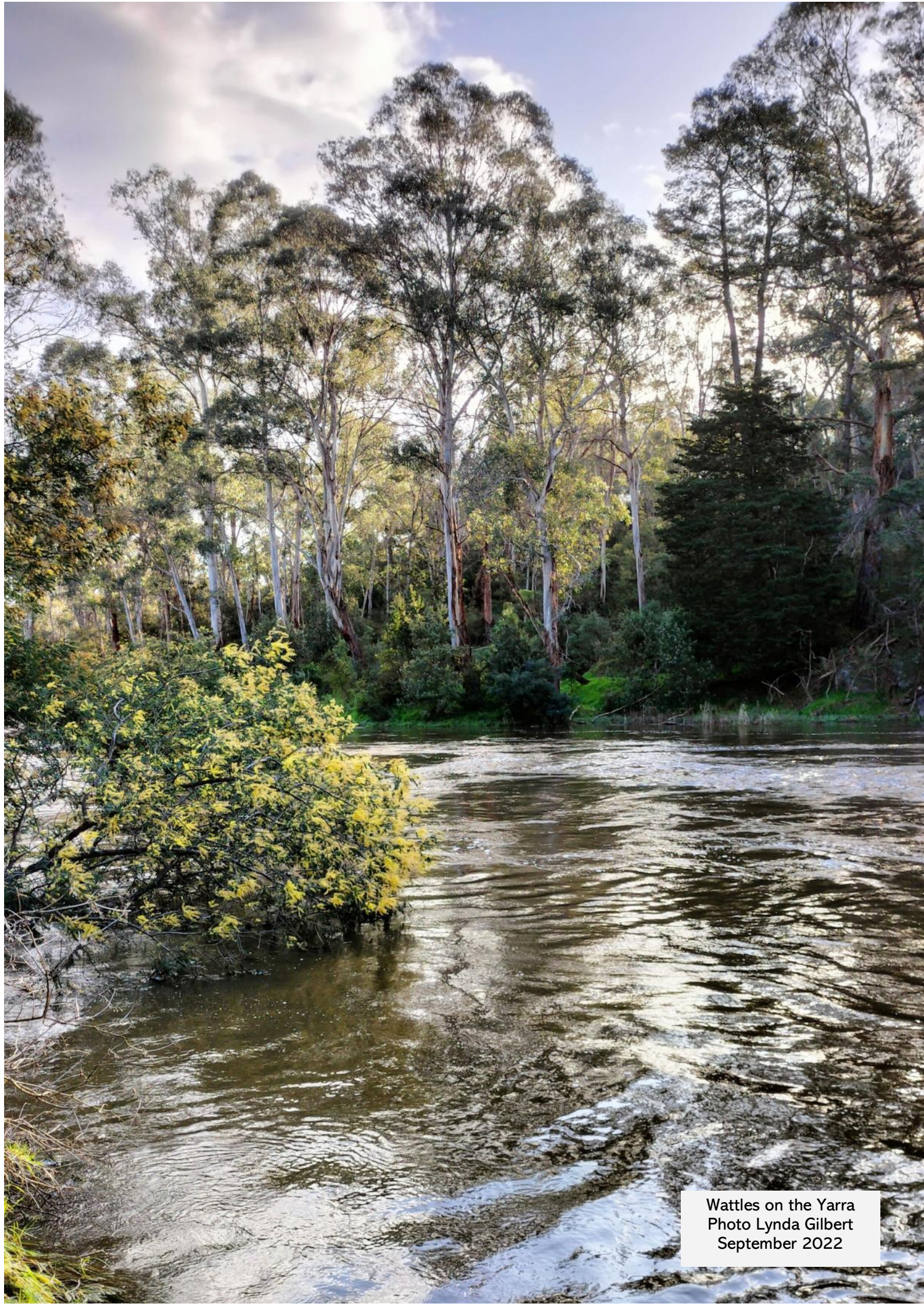
At least one blunt greenhood is blooming in Frogland (left). The bronze-wing pigeons in my garden are pushing each other around with wing-lifts. One cockie is certainly enjoying the ornamental cherry blossoms in Briar Hill.

Spring is here,  
*Linda Rogan*



Your photos can appear on this page (subject to space available) if you email them as follows:  
[editor@fowsp.org.au](mailto:editor@fowsp.org.au)





Wattles on the Yarra  
Photo Lynda Gilbert  
September 2022