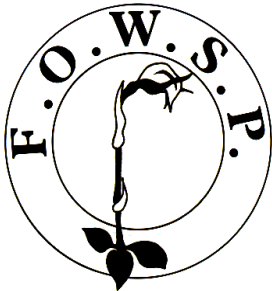


Friends of Warrandyte State Park



Newsletter

Website: www.fowsp.org.au

Friends of Warrandyte State Park (FOWSP) Inc. PO Box 220 Warrandyte 3113
ABN 94170156655/Incorporation No. A0024890C

Editor's Corner

It seems as if January is rushing into February. As John and I are in early stages of the newsletter hand-over, I have completed this newsletter. (John is seen in the photo right).

Spadoni's Reserve was venue for a fascinating TAG from last December which is reported and photographed by Don.

Pages 4 and 5 bring you a report from Frogland from December and January.

As a number of pages remain to be filled, I have taken this opportunity to bring you the following:

Page 6 - A review of the weedy and the indigenous St John's wort

Page 7 and 8 - A look at some roosting male sweat bees

Page 9 - More on the net-casting spider

Page 10 - Twisted spiny ants and tailless lorikeets

Page 11 - A range of photos from Banyule and Manningham

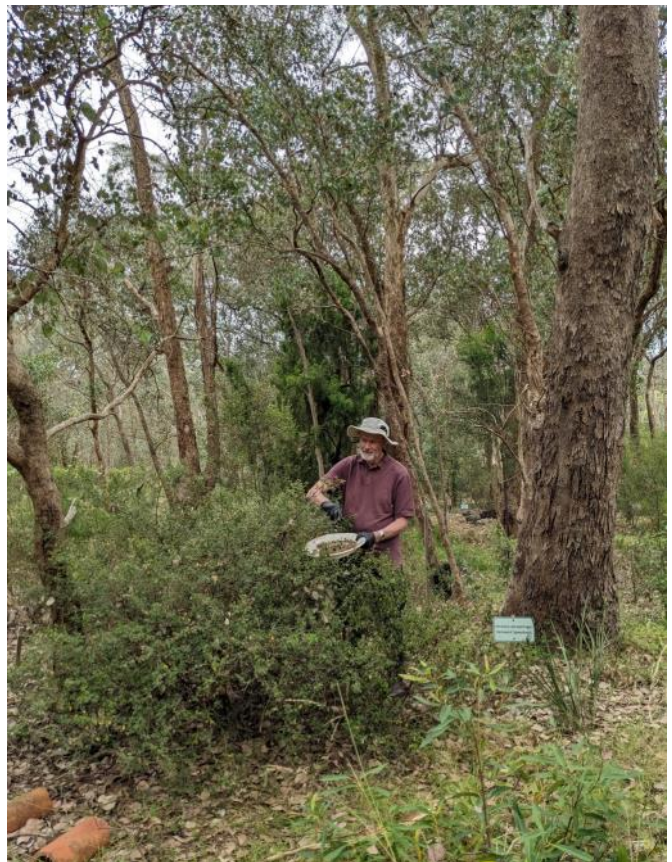
And lastly on page 12 a colourful musk lorikeet which visited my *Corymbia ficifolia* in January.

I have enjoyed my years as editor and the ability to share some of what I have learned as a naturalist over time. I expect you will, in the future, notice an increase in information about Australian birds and a reduction of photos of native bees which should be an enjoyable change. I still intend to write up a report from Frogland and may also include something on insects I find interesting.

Please support John in his editing of the Newsletter especially by contributing photos and items you find of interest. Anything to do with nature of Warrandyte and nearby, the occasional nature travel, what's happening around the nursery. Ask John if you are not sure.

In the meantime, I hope to see you occasionally in Frogland and thank you for your support over the years.

All the best, this is *Linda Rogan*
Signing off



Seedy characters in Frogland See p. 4

Deadline for March edition newsletter is

Friday 16 February 2024

contributions can be emailed to John Young editor@fowsp.org.au
or posted to PO Box 220, Warrandyte 3113

What's special about Spadonis Reserve? 23 November 2023

This TAG was a real treat for us, as many of us had not been to Spadoni's Reserve. Quite different to nearly all of our other hilly and rocky sites in the Warrandyte State Park, it's located in the Yarra floodplain on alluvial soils near Yarra Glen.

Access is through Spadoni's farm, known as Olinda Yarra Estate, one of the oldest properties in the Yarra valley with the first buildings erected 1870. The estate gardens were set up by William Guilfoyle (designer of the Royal Botanic Gardens and many other public and private gardens in Victoria) as part of Yering estate in the late 1800s. The gardens are astounding, with large specimens of trees such as Chilean date palm, *magnolia grandiflora*, monkey puzzle tree, bunya pine, English oak, and Australia's brush box (*Tristania conferta*), while not forgetting the grand homestead.

The Spadoni's Reserve site is located adjacent to the river, with a plantation of the rare Yering silver gum (*Eucalyptus crenulata* ssp.), which Cam advised is a subspecies of the Buxton silver gum occurring only here. Only a handful of the original trees had been found along the billabongs. Seeds from these were collected for the plantation and propagation by FOWSP some years ago.



Cam informing the group about the Reserve.
Large Manna gum on left, Yering silver gum plantation behind and to right.

In the plantation and nearby, Phil pointed out the new growth of many *Pimelea pauciflora*, also a rare plant used by First Nations People to crush up and place in the river or billabongs to stun fish. Many mature plants had died during the 2022 floods, but the natural regeneration was extensive.



Our main tasks were weeding and removing unwanted trees from the plantation, as well as re-fencing an area to protect the *Pimelea*, followed by a bonus walk along the billabongs and river and collecting seed from the 100-year-plus old Yering silver gums.

Numerous bird species were spotted including both royal and yellow-billed spoonbills, pied cormorant, and chestnut-breasted shelduck, and we checked out the river banks previously noted as rainbow bee-eater bird nesting sites, but without success.

Thanks to Don for this report and photos.

Pimelea pauciflora re-generated post 2022 floods(above)
Robin, Belinda and David collecting seed from Yering silver gum (right)
Lovely billabong in Spadoni's Reserve (below)



Meanwhile in Frogland...

One of the main purposes of the plants in Frogland is to serve as a seed orchard for plants to be grown in our indigenous nursery. In early December, seeds of the Australian dusty miller were ripe for the taking. John and Gray enthusiastically, if not too energetically, took on this task. The tiny seeds can be seen in the photo below.



These lovely golden weather-grass (*Hypoxis hygrometrica*) (photo right) were planted in 2023 and we will be watching to see whether they settled in well at Frogland. I have found they also grow and flower well in self-watered pots in my garden.

(Continued on page 5)

TAGS (Thursday activity groups)

TAGS meet at the nursery at 9.00 am for a 9.15 am departure. Please remember to wear appropriate footwear and clothing for the weather, and please bring your own filled water bottle.

Contact number: 0417 618 367

- Ranger-led TAGs
- Autonomous TAGs in PV enclosures

1/02/2024	Endeavour Bank	ARTUR	Exclosure cleanup, planting maintenance	Easy
8/02/2024	Dodd St - 'Pindari'	CAM	Cassina thinning, hand weeding	Easy
15/02/2024	Fourth Hill - Betton Fence	DON	Cassinia thinning and woody weeds	Easy-Moderate
22/02/2024	Rifle Range	DON	Weeding, renovation	Easy
29/02/2024	Mullum - Craigs/Becketts Rd	ROBYN	Planting maintenance, weeding	Easy
7/03/2024	Pauline Toner Reserve	PHIL/CAM	Cassinia thinning, woody weeds - Polygala, wattles	Easy-Moderate
14/03/2024	Hochkins Ridge, Wonga Park	PHIL	Weed work	Moderate
21/03/2024	Pound Bend - Road reserve, Boys/Gallatlys Rd	DON/GRAY	Woody weeds - polygala, pittosporum, English ivy.	Easy-Moderate
28/03/2024	Jumping Creek to Blue Tongue Bend	PHIL	Track maintenance	Moderate-Difficult

Difficulty ratings:

Easy: Even terrain, some light lifting, kneeling and bending involved. Few tripping hazards.

Moderate: Uneven terrain, light to heavy lifting, kneeling and bending involved. Tripping hazards present.

Difficult: Steep terrain, light to heavy lifting, working in over-grown areas and lots of bending. Many tripping hazards and slippery surfaces present.

Check the website for any changes at <http://fowsp.org.au/activities.php>

Please note TAGS and activities will be cancelled on Total Fire Ban days or when weather conditions are deemed hazardous.

FOWSP COMMITTEE 2024		OTHER FOWSP CONTACTS	
Artur Muchow 0415 383328	Secretary	Nursery Manager Josh Revell Nursery Phone 0408 317 327 email nursery@fowsp.org.au	
Tony Oliver treasurer@fowsp.org.au	Treasurer and Membership	Park Office 03 8427 2132	
John Young editor@fowsp.org.au	Newsletter editor	Newsletter assist and Librarian Lyn Moore	
Caitriona Young		Market Trailer Jan Falconer 0419 872 096 email trailer@fowsp.org.au	
Gray Ardern 0418 190261		Manningham Council Rep Cathy Willis 0427 660 651 Facebook coordinator Carolyn Noel 0409 901441	
Lyn Moore 0409 683 041 lynm333g@gmail.com	Wildlife rescue Victoria https://www.wildlifelifevictoria.org.au/contact-us	Webmaster Jason Patton 0402 121838 jason@parau.com	
Robyn Hull robynamelia@bigpond.com		Jason Patton 0402 121838 jason@parau.com	
Jeff Cranston 0418 396 647 legality@bigpond.com	Staff Representative Lynda Chambers 0466 274421 phenologist@gmail.com	info@fowsp.org.au	

The views and opinions expressed in this publication are those of the authors, and do not necessarily reflect those of FOWSP

Newsletter Team this month: John Young, Linda Rogan, Lyn Moore

Next Committee Meeting

Date: Tuesday February 13 2024

Venue: Education Centre, Pound Bend

Time: 17:00 pm sharp

(Continued from page 4) ...Frogland...

Another plant we have been wanting to grow in Frogland is Victoria's floral emblem *Epacris impressa*. As it is not easily grown from seed, we had attempted to transplant some individuals which had been grown in pots in the nursery for some years. This year we have at least six which are putting on new growth and were blooming in January (photo right).



This distinctive caterpillar (above) was benignly resting on a *Hardenbergia* leaf along the fence line in Frogland. I recognized the painted acacia moth *Ogyris anartoides* (then *Teia anartoides*), which I wrote about in 2010. The full life story of both the male and the female can be found in FOWSP newsletters March 2010 and May 2010. This was fascinating to watch as the female is large and wingless and attracts the males to come to her to mate.

FOWSP THURSDAY PROGRAM

We meet for propagation and other nursery activities every Thursday morning at 9.30 am at the Warrandyte State Park depot, Pound Bend Road, Warrandyte (Melway 23 C10), unless otherwise stated below. Propagation takes place from 9.30 am to 12.30 midday.

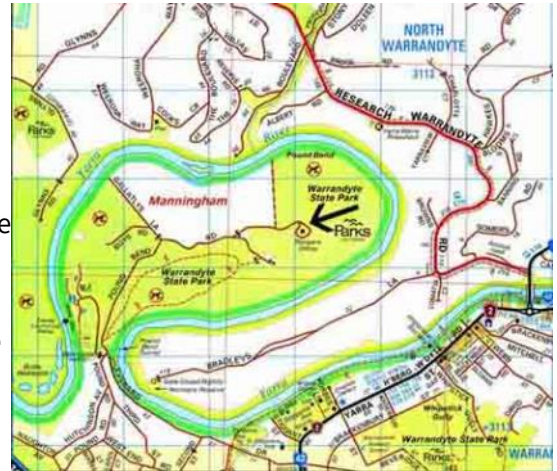
No prior experience necessary -
There is always someone available to show you the ropes.

NURSERY OPENING HOURS

The nursery is open for plant sales every Thursday.
9.30 am to 12.30 pm and
the first Saturday of every month, 9am to 1 pm (to coincide with the Warrandyte Market) April to November only.

Closed Christmas through New Years days.
Also closed to customers and volunteers on days of severe weather and on Total Fire Ban Days

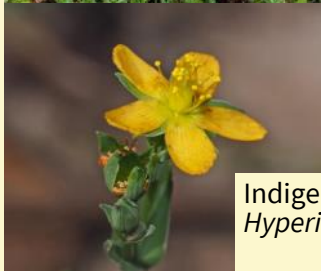
Prices: Members \$2.50 Non-members \$3.00



Copyright 2008 Melway Publishing Pty Ltd
Reproduced from Melway Edition 36 with permission

Hypericum species revisited

The photo on the right shows Bruce, Judd and Gray removing weedy St John's wort in January 2019. This is in the area where Marie, Chris and Linda park near Frogland. I was worried that an infestation here would also become established in Frogland. It was noted at that time that the indigenous small St Johns wort (*Hypericum gramineum*) was also in this area.



Indigenous
Hypericum gramineum

I am delighted to announce that this year this hillside area now boasts a very healthy blooming patch of the indigenous plant and no sign at all of the weedy one removed in 2019.

Just a reminder, the nursery also sells the matted St. Johns wort (*Hypericum japonicum*) which is also growing near the top pond in Frogland. It forms an attractive ground cover in moist areas.

Linda Rogan

Some of our sweat bees (Halictidae family)

***Lasioglossum* species**

They are called sweat bees because in some areas they are attracted to perspiration. This family of bees has two genera (and many species) in Victoria, *Lasioglossum* and *Lipotriches* and I have been excited to observe two very different *Lasioglossum* species and three also distinctive *Lipotriches* species with males roosting in clusters. The first species is *Lasioglossum lanarium* (sometimes called the woolly sweat bee). This is one you are



likely to see resting inside dandelions, singly or in twos and threes. I was happy to photograph large num-

bers in native *Xerochrysum* and blue finger flower as shown above.

The other *Lasioglossum* species I have been monitoring since 2019 at Andrew Yandell Reserve in Greensborough is the very different appearing *Lasioglossum peraustrale*, which is a very effective wasp-mimicking bee and tends to roost with its wings open as seen in the photo right.



Page 8 will show you the *Lipotriches* species for this season.



FOWSP MARKET TRAILER

Thanks to those who helped out on Saturday 2 December 2024

**Jeff Cranston, Jan Falconer
Christine Andell, Lyn Moore,
Marion Thompson, Chris Kay, Marie Krause**



Special thanks to **Arthur Muchow** who transported the market trailer.

The Warrandyte market is held on the first Saturday morning of the month from 8.30 am to 12.30 pm at Stiggants Reserve. Volunteers are rostered in pairs to (man/woman) the FOWSP information trailer for just one hour.

If you are interested in being on the market roster
please contact Jan Falconer 0419 872 096 email trailer@fowsp.org.au
First timers are always paired with someone more experienced.

Next market dates are: Saturdays, 3 February, 2 March

***Lipotriches* species**

Some of you will remember my excitement in finding *Lipotriches* bees roosting on *Teucrium corymbosa* in Frogland last season (photo right). These have not appeared this season, so far, but what may be the same species is now hanging about at Andrew Yandell Reserve on cool mornings (photo below left) .



Two other *Lipotriches* species have also caught my attention this season. The first is the *Lipotriches australica* or green and gold nomia bee which I have frequently seen feeding around the FOWSP nursery. Roosting males are seen in the photo above.

The last species was only seen twice for this season, near Karingal Creek, although seen more consistently in previous seasons. This shiny black *Lipotriches* species is notable for its red legs (photo and inset left).

I hope you will enjoy looking out for your own clusters of native bees when walking on cool summer mornings.

Linda Rogan

More on the Net-casting Spider



I frequently wander in my mostly indigenous garden at night to see what I can see and photograph. A large spider with a narrow arrowhead-shaped abdomen hanging in my *Plectranthus* was an eye-catcher for me. I was surprised to see an equally large but very slender spider nearby and

quickly realized these were a male and female of the net-casting spider (Family Deinopidae). Returning later in the evening, I was able to photograph the female with the blue net she was preparing in order to capture her prey (photo below) . I was hoping to observe a mating but the male had not approached any closer.



Joan Broadberry contributed a very informative article about her observations of the female

with her net. See the FOWSP newsletter for March 2019. You can look this up on the FOWSP website under publications. This is well worth reading.



From iNat, I learned that the Australian species previously called *Deinopis* are now called *Asianopis*. From Robert Whyte's Field guide to Spiders, I learned that those big front eyes, which allow her to cast her net with such accuracy, are used only at night. More remarkably, their light sensitive retinas are digested each

morning as day light approaches and reformed each evening so that they can see again.

Linda R



Spiny, upside down ant

I was curious about this tiny black insect, which looked a bit like a spider but on closer look has the antennae of an ant. I couldn't make out where all the body parts are and while the head is turned one way, the legs appear to be the under side. Putting this on iNat, I learned it is indeed an ant. [Southern Broad-nosed Spiny Ant *Polyrhachis femorata*](#) which is known to adopt this position when it feels threatened. It appeared to move off still in the twisted position but as it went quickly, I couldn't be sure.

Tailless Rainbow Lorikeet

This bird was sitting quietly on a low branch as I walked along the Karingal Creek recently. I wondered what may have happened to its tail feathers and hope it will be able to cope okay.

Linda



Are your subs due??

Please check the message on the email you receive with the newsletter link by scrolling down beyond the link. If subs are due soon a message such as below will be seen in the email.:

'Please note that, according to our records, your Membership is due to expire on . Please click on the link below to re-new your Membership.

http://fowsp.org.au/membership.php?member_id=&membership_renewal=Yes
Of course, if this matter has been attended to recently, please disregard.'

FOWSP Membership Renewal Form

Name

Address

.....

Telephone no.

Email

Membership (family) \$30
Concession \$15

Newsletter by email (tick box)

Send to: FOWSP PO Box 220, Warrandyte 3113 or renew on the website www.fowsp.org.au with the option of direct deposit payment.

Email photo bonus page

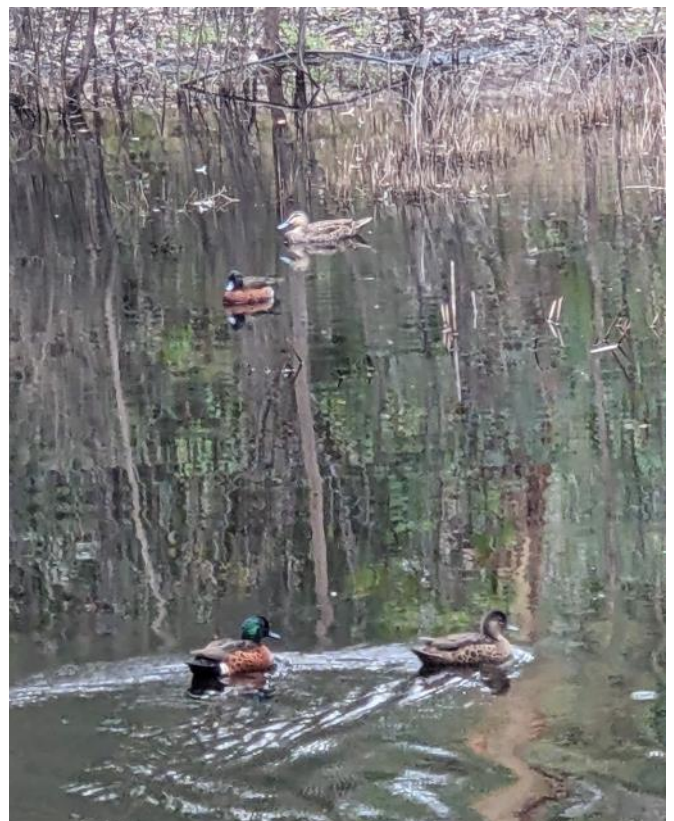


January in Banyule and Manningham

Clockwise from upper left:

Kookaburra in my Greensborough garden tries to ignore disgruntled noisy miners. A wasp's stash of colourful spiders revealed when I moved a broom handle. Chestnut teal ducks, at least two pairs were seen at the wetlands in Candlebark Park,

Lastly, the top pond at Frogland was well filled by January rains.



Musk lorikeet (*Glossopsitta concinna*)
Attracted to the blooms on the *Corymbia ficifolia* in Linda's Briar Hill garden.

